

## Sinotronics Touch Foil Installation Guide

### 1. Checking after received

- Open the package



(in tubes)

#### **Attention:**

- Please check whether the package is good after received, if the package is damaged, please refuse to accept.
- Please unpack the foil in clean environment, better in cleanroom.
- When unpacking the foil, please handle with care and do not scratch or hurt the foil/controller.
- After unpacking, please check the foil quantity and size according to your order, if not match with your order please contact Sinotronics sales immediately.

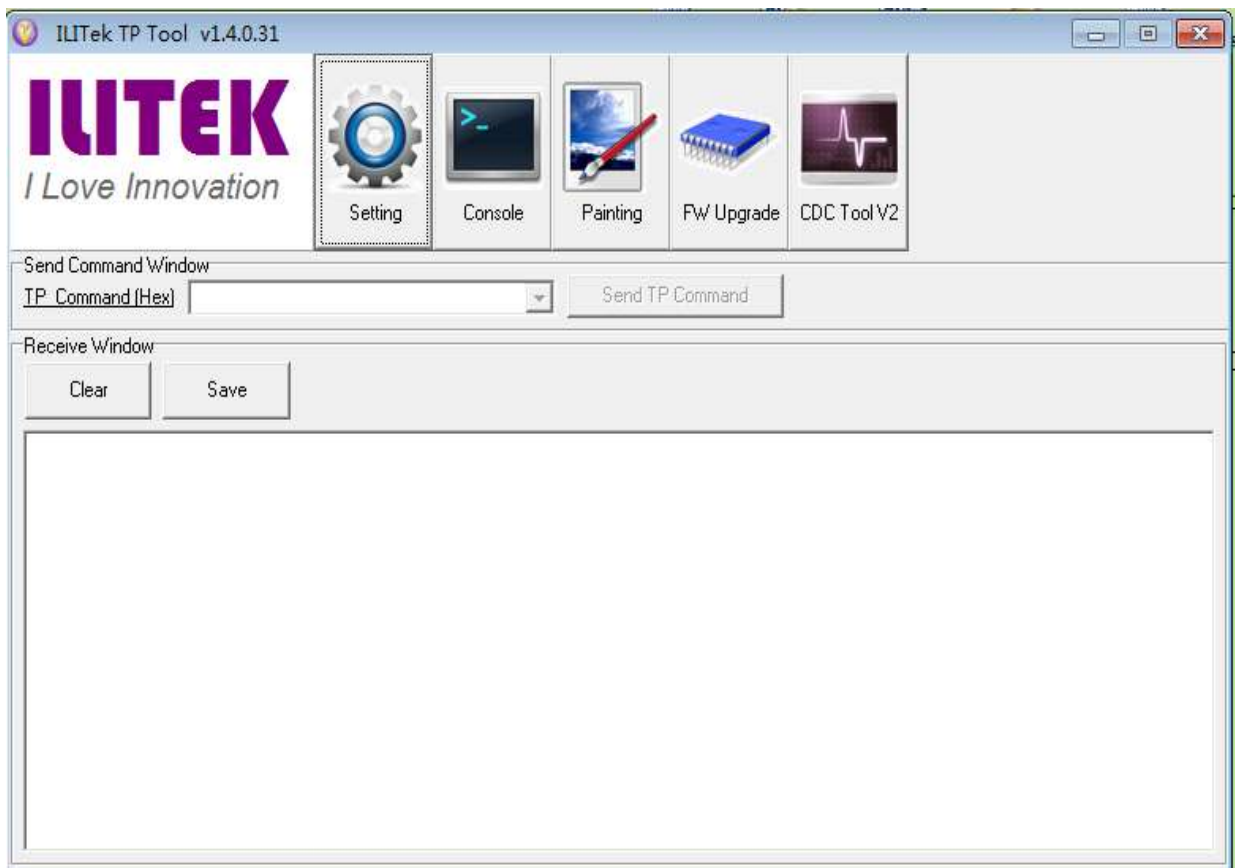
## 2. Testing before lamination

- 1). Please test all the touch foils, controller and USB cables within three days after receiving. If there are damages, quantity error, unable to run, please contact sales, we will replace for free if it is caused by product quality problem.
- 2). If the damages are caused by secondary package on distributors' or customer's site, Sinotectronics do not bear any responsibility.

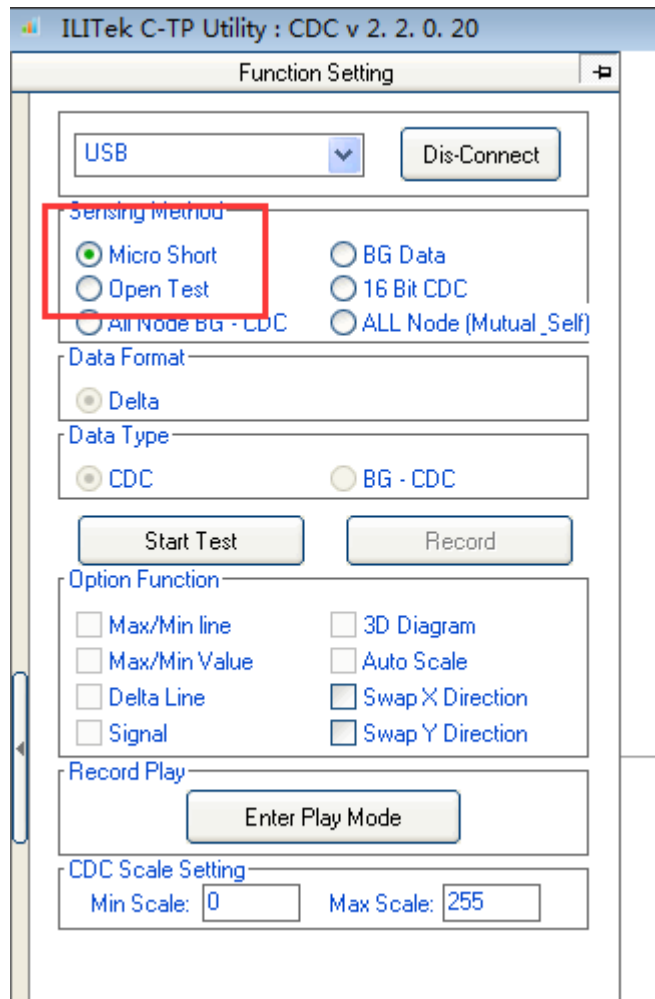
## 3. Testing procedure

3.1 Connect touch foil with controller, and connect controller with computer, run testing tool(if do not have, ask sales of Sinotectronics)

3.2 click CDC Tool

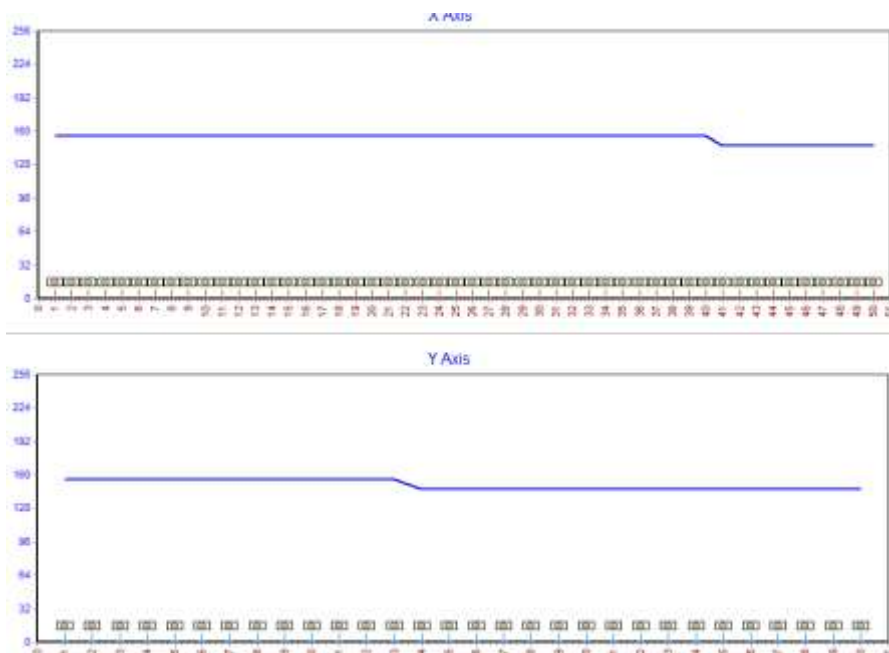


### 3.3 "Open" and "Short" test

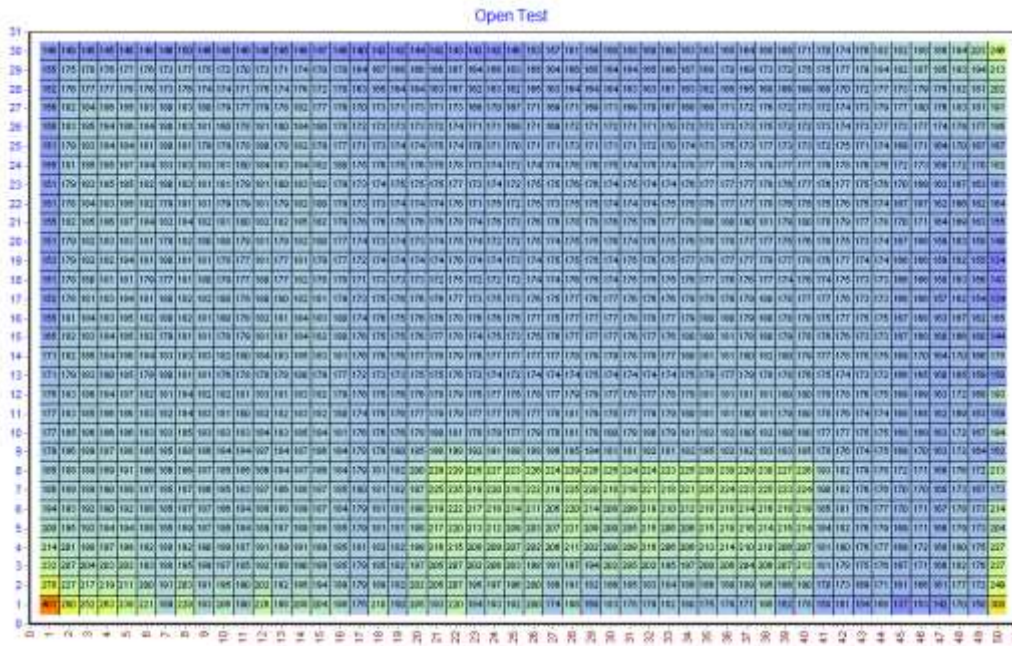


3.4 If the "Short" test result is as below, there is no circle short, foil can work normal.

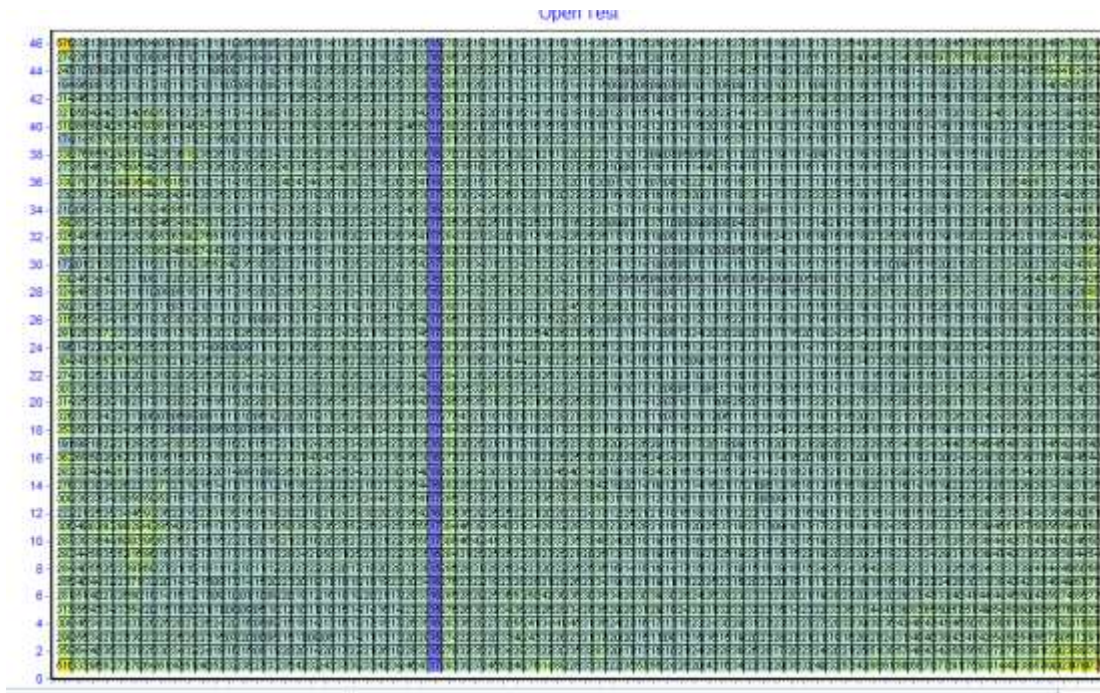
If the "Short" test result value is over 7, there is circle short, foil can not work normal, please contact relevant sales person.



### 4.4 Open test



Above result means foil is in good condition



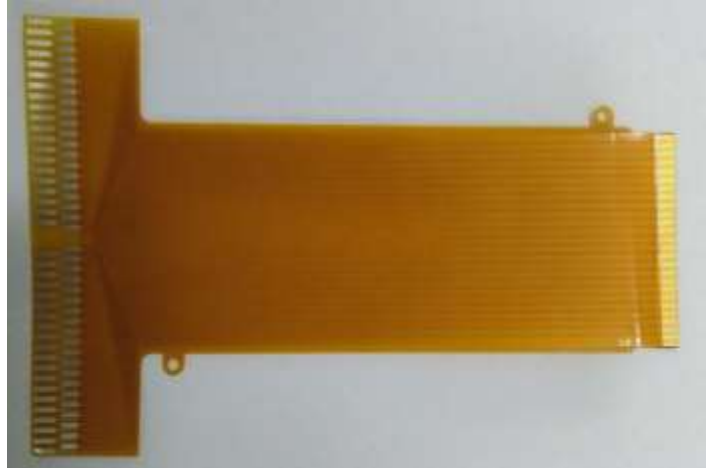
Above result means foil have wire abnormal, please contact relevant sales immediately.



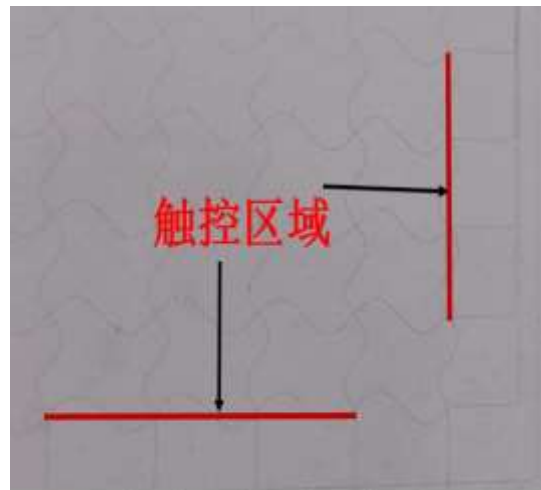
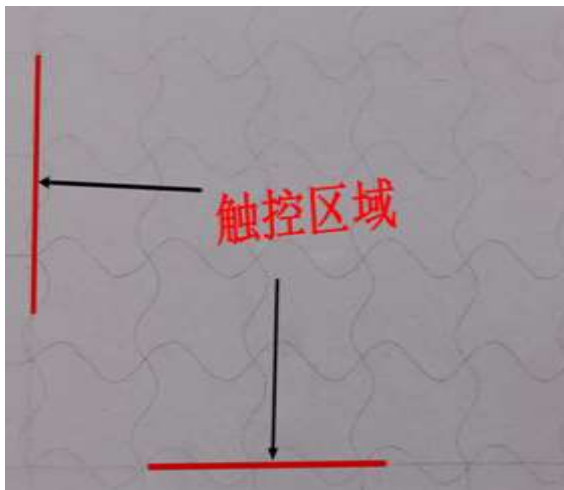
#### 4. Laminate foil on glass(Refer to demo video)

4.1 Clean the glass using water

4.2 Spray the water on the surface of foil, then peel off the protection layer with blue label, during the peel off process keep spraying water, always handle with care.



4.3 The area inside red lines is touch area, outside the red lines is nontouch area, please match the LED display edge line with the red line, if not matched well, the touch area will be a little deviation which will cause some area can not be touched, for example four corners of the LED display.



If there are a little deviation, you can gently push the foil into correct position **within five minutes after lamination**(before the glue is dry).

4.4 Scraping out the water and bubbles between foil and glass, from central position of foil spreading to four sides until all water and bubbles are out. In this process if there is tiny object between foil and glass, peel off the foil from glass until the

tiny object position and keeping spraying water during the whole process, repeat this operation until the tiny object is out. Then follow above mentioned operation until foil lamination is finished.

4.5 After foil lamination is finished, wait at least 24-48 hours until water is complete dry, do not do anything before it is completely dry.

4.6 Test with "Openshort" to check whether the foil is good after lamination.

When connect FPC with controller, ensure the golden finger area is completely dry without water.

4.7 If the touch direction is opposite with finger point, please contact sales for direction rotation software to solve.

## **5. How to prevent interfere**

5.1 Use power supply socket with ground wire, with a filter is better

5.2 The power supply and PC (windows or android board) shall connected to ground.

5.3 Fix the controller with LED panel base, both connected to ground.

5.4 In order to prevent interfere, the USB cable shall not be bundle up together with lines of power supply or LED panel, Note: sometimes, it has interfere when the USB line completely stucked along with LED panel.

5.5 The touch foil tail and controller shall be at least 5cm distance away from high frequency/radio frequency transmitter.

5.6 Connect the USB ground wire with machine cover, this ensure the machine grounding well.

5.7 If there is interfere after start the PC, plug off the USB cable of touch foil and insert into another USB port.

5.8 All metal parts shall keep at least 3mm distance away from touch foil.