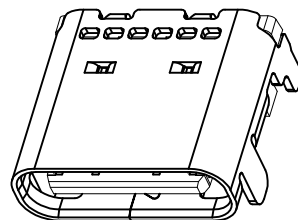
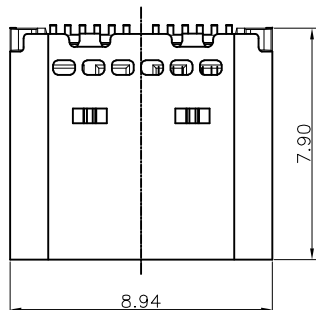


REV.	LOCAS.	DESCRIPTION	DATE	DRAWN
A	NEW	INTERIM INITIAL RELEASE.	2022.03.30	何健纯

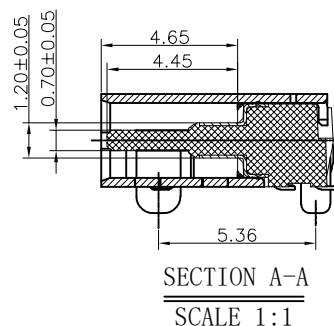
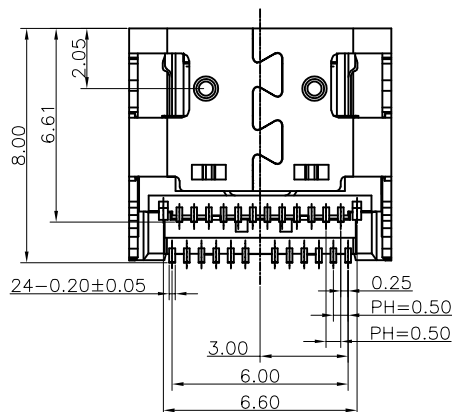
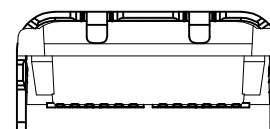
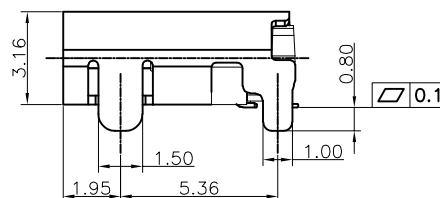
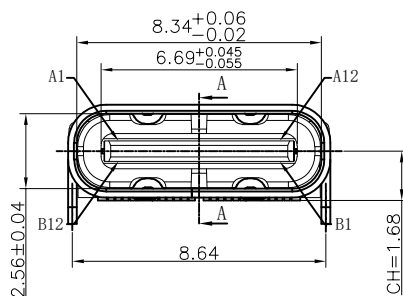


Specifications

Current Rating:5Amp
 Insulation Resistance:100MΩ MIN
 Dielectric Withstanding Voltage:AC 100V FOR 1 MINUTE.
 Contact Resistance:100m Max.
 Operating Temperature:-25°C to +85°C
 INSERTION FORCE: 0.5~2.0kgf.
 REMOVAL FORCE: 0.8kgf~2.0kgf.

Materials

Insulating Material:COPPER ALLOY(C18400)
 Contact Material:HIGH TEMPERATURE RESISTANT PLASTIC, LCP UL94 V-0.
 All materials must meet GREENCONN hazardous substances control standards.



Ordering Information

C UZD220 - XX XX A 001 C X 9 X-C8

No. of Pins per Row: 24
 Standard Plating: 09=Gold 3u/GF, 14=Gold 30u/GF
 Color: 1=Black
 Standard Packing: D=Tape&Reel



3RD.ANG PROJ.
 PAGE. 1/2

GENERAL TOLERANCE	
X.*±5.0'	X.±0.30
.X*±3.0'	.X±0.25
.XX*±2.0'	.XX±0.15
.XXX*±1.0'	.XXX±0.10

DESIGNED: 何健纯

DATE: 2022.03.30

DWG. NO.

CUZD220-A001C9

CHECKED:

DATE:

PART NO.

CUZD220-XXXX A001CX9D-C8

APPROVED:

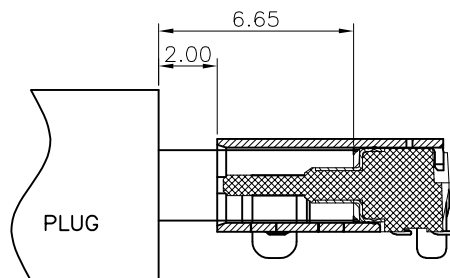
DATE:

TITLE.

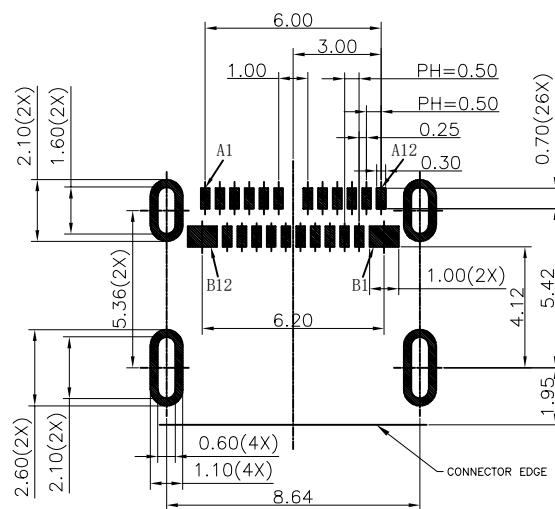
USB C TYPE REC TOP MOUNT DOUBLE SMT TAIL

REV.	UNIT.	SCALE.
A	mm	1:1

REV.	LOCAS.	DESCRIPTION	DATE	DRAWN
A	NEW	INTERIM INITIAL RELEASE.	2022.03.30	何健纯



MATED CONDITION<REF.>



RECOMMEND P.C.B LAYOUT(COMPONENT SIDE)
TOLERANCE FOR PCB LAYOUT IS ±0.05

USB TYPE-C PIN ASSIGNMENTS

PIN NUMBER	SIGNAL NAME	PIN NUMBER	SIGNAL NAME
A1	GND	B12	GND
A2	SSTXp1	B11	SSRXp1
A3	SSTXn1	B10	SSRXn1
A4	Vbus	B9	Vbus
A5	CC1	B8	SBU2
A6	Dp1	B7	Dn2
A7	Dn1	B6	Dp2
A8	SBU1	B5	CC2
A9	Vbus	B4	Vbus
A10	SSRXn2	B3	SSTXn2
A11	SSRXp2	B2	SSTXp2
A12	GND	B1	GND



Website: www.greenconn.com
E-mail: sales@greenconn.com

3RD.ANG PROJ.
PAGE. 2/2

GENERAL TOLERANCE	
X.±5.0'	X.±0.30
.X'±3.0'	.X±0.25
.XX'±2.0'	.XX±0.15
.XXX'±1.0'	.XXX±0.10

DESIGNED: 何健纯

DATE: 2022.03.30

CHECKED:

DATE:

APPROVED:

DATE:

DWG. NO.

CUZD220-A001C9

PART NO.

CUZD220-XXXX A001CX9D-C8

TITLE.

USB C TYPE REC TOP MOUNT DOUBLE SMT TAIL

REV.	UNIT.	SCALE.
A	mm	1:1