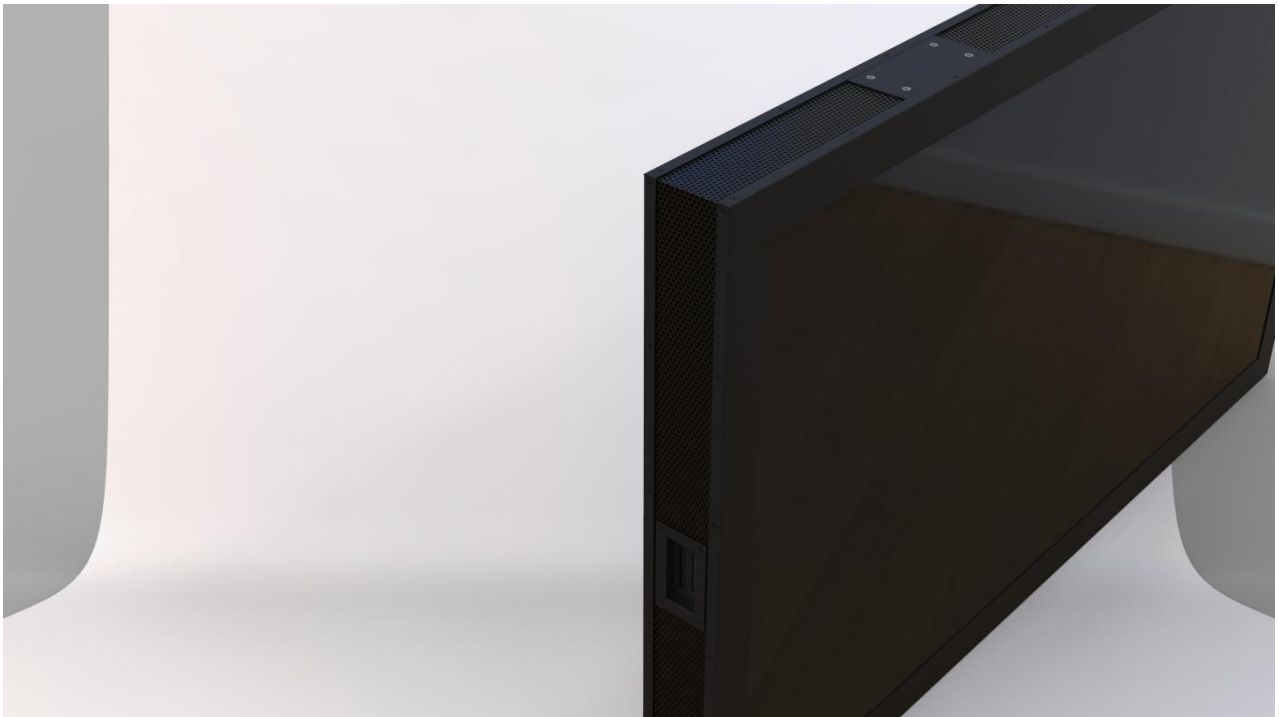


Technical Datasheet for Dual-sided Display Modules

产品名称: Product Name:	55 inch Dual-sided Display Modules 55 英寸 双面显示模组	产品型号: Model No.:	IPD-ITF-55-D-WMD-S01		
内部产品编码: Internal Code:	ITF26WMD550S01		显示尺寸: Display Size:	55inch	
产品主要模块: Main Assembly:	Display 显示	Structure 结构	Converter 驱动		

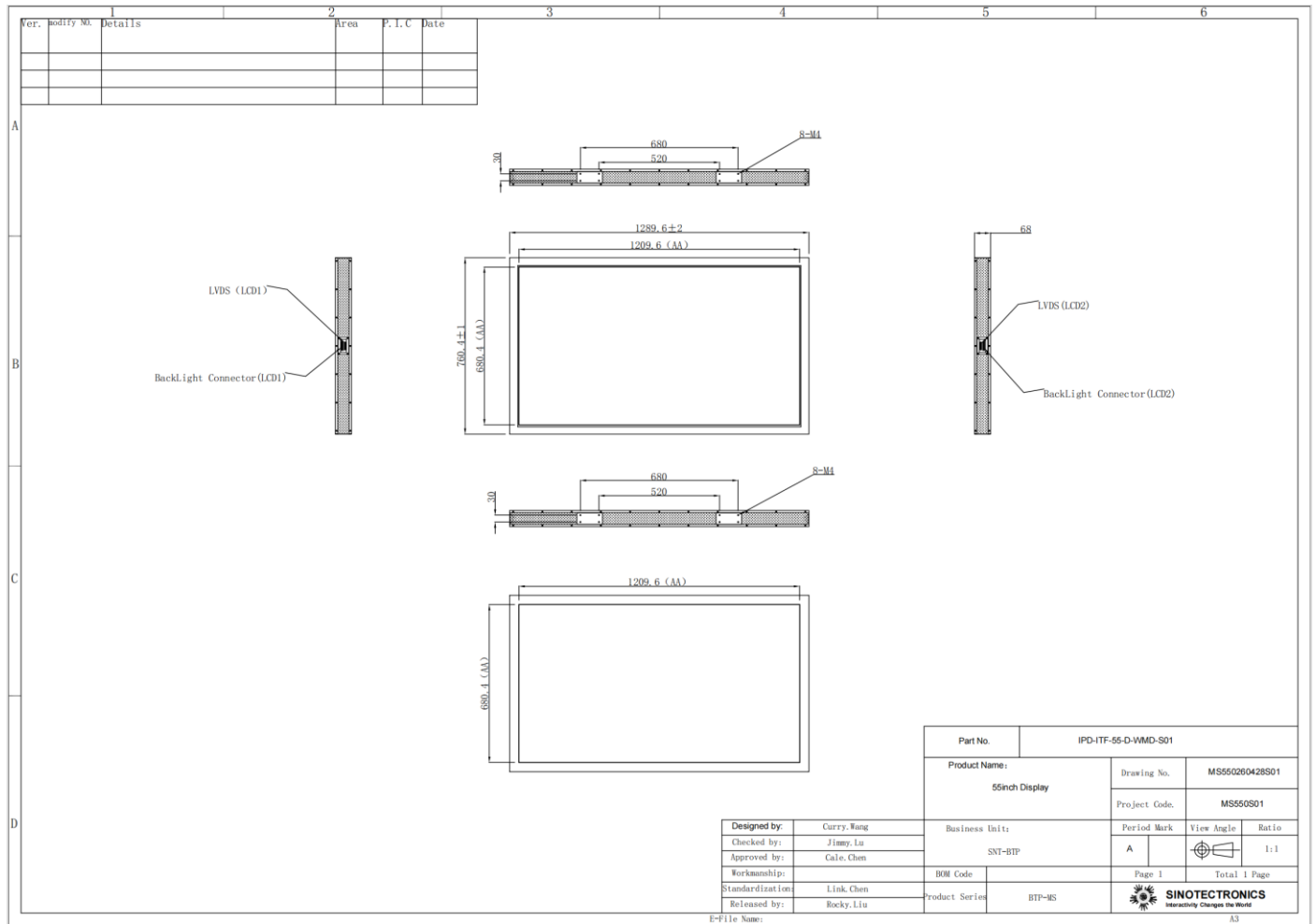
产品效果图:

Front View For Reference:



产品尺寸图:

Product Dimensions:



技术参数 Technical Datasheet:

触摸屏 TOUCH	
触摸屏型号 TS Part No.	N/A
触摸技术 Touch Technology	N/A
触摸叠构 Touch Structure	N/A
触摸点数 Touch Points	N/A
触摸界面 Touch Interface	N/A
触摸控制器 Touch Controller	N/A
显示屏 DISPLAY	
面板尺寸 Panel Size	55" a-Si TFT-LCD
面板型号 Panel Model	RV550FHB-N00
屏长宽比(W:H) Aspect Ratio	16:9
最佳分辨率 Resolution	1920(RGB)×1080, FHD
显示区 Active Area	1209.6(H)×680.4(V) mm
色彩 Color Depth	16.7M, 72% NTSC
亮度 Luminance	2500nits/700nits
视角 Viewing Angle	89/89/89/89 (Typ.)(CR≥10)

信号类型 Signal Type	LVDS (2 ch, 10-bit) 51 pins
对比度 Contrast Ratio	1000:1 (Typ.) (TM)
背光 Backlight/Backlight Lifetime	WLED, 30K hours , with LED Driver
结构 STRUCTURE	
边框 Frame	Alu Alloy, Black-Painted, CNC Precision Shaping
内部结构 Internal Structure	SECC Plates
其他结构 Others	N/A
工作与储存环境 WORKING AND STORAGE ENVIRONMENT	
工作温湿度 Working Environment	0~50 ℃, 20~80% RH, Non-condensing
储存温湿度 Storage Environment	-20~60 ℃. 10~90% RH, Non-condensing
可选配件 Optional Accessories	
驱屏套件 Panel Kits	BTP-LC-R8512 V4
其他附件 Others	N/A