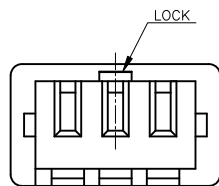
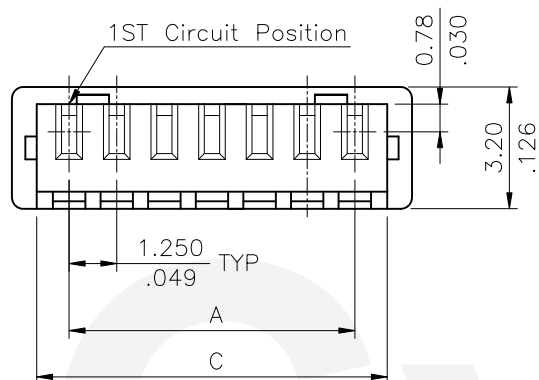


Material:
 △₂ △₃ △₄ * Insulator: Nylon 66 UL 94V-0

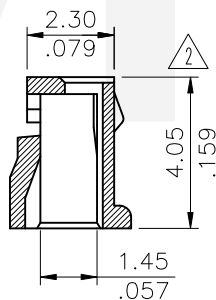
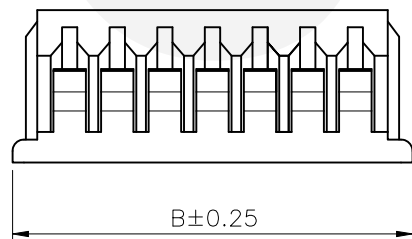
Ordering Code:

CI44 ** S00 * 0 -NH
 ① ② ③ ④ ⑤ ⑥

- ① Series No.
- ② No. of Circuits:
- ③ S00= Connector housing
- ④ Color: 0= Nature
1= Black
3= Red
7= Blue
- ⑤ Other option: 0= High mating & unmating force
- ⑥ NH= Halogen-Free




FOR 2 & 3 PIN卡勾位置



Circuits	Dimension		
	A	B	C
2	1.25(.049)	4.25(.167)	2.95(.116)
3	2.50(.098)	5.50(.217)	4.20(.165)
4	3.75(.148)	6.75(.265)	5.45(.215)
5	5.00(.197)	8.00(.315)	6.70(.264)
6	6.25(.246)	9.25(.364)	7.95(.313)
7	7.50(.295)	10.50(.413)	9.20(.362)
8	8.75(.344)	11.75(.463)	10.45(.411)
9	10.00(.394)	13.00(.512)	11.70(.461)
10	11.25(.443)	14.25(.561)	12.95(.510)
11	12.50(.492)	15.50(.610)	14.20(.559)
12	13.75(.541)	16.75(.659)	15.45(.608)
13	15.00(.591)	18.00(.709)	16.70(.657)
14	16.25(.640)	19.25(.758)	17.95(.707)
15	17.50(.689)	20.50(.807)	19.20(.7560)
16	18.75(.719)	21.75(.856)	20.45(.805)

Halogen-Free

RoHS Compliant

△ ₄	Karen	5/25-20'	ECNT120137/ECRB120015		DATE	UNIT: mm / inch	TITLE: 1.25MM(.049")	 瀚荃股份有限公司 CviLux Corporation
△ ₃	Karen	12/30-19'	ECNT119374/ECRB119072	DRAWN BY: Karen	5/25-20'	TOLERANCE UNLESS OTHERWISE SPECIFIED	CRIMP TERMINAL HOUSING	
△ ₂	Sun	6/06-16'	ECRB116025/ECNT116122	ENGINEER: Sun	5/26-20'	.X ± 0.25/.010 X' ± 1'	MATERIAL:	
△ ₁	Karen	12/16-13'	ECNT113154	CHECKED BY: Eisley	5/28-20'	.XX ± 0.15/.006 X' ±	FINISH:	
SYM	NAME	DATE	REVISIONS	APPROVED BY: Eisley	5/28-20'	.XXX ± 0.08/.003 .XX' ±		DRAWING NO. CI4449SF
								PART NO. CI44**S00*0-NH
								SCALE 5 / 1
								SHEET 1 OF 1

CVILUX
 2020.06.04
 ISSUED