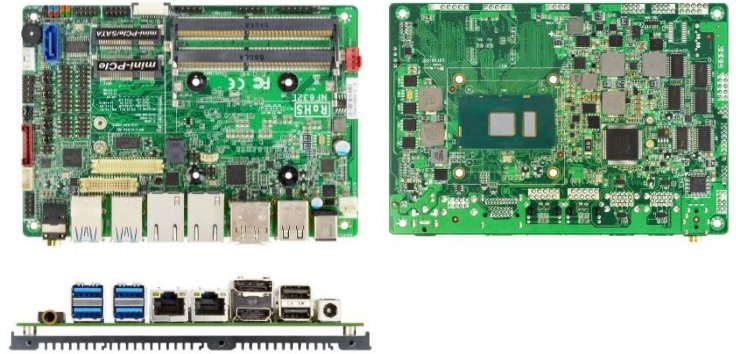


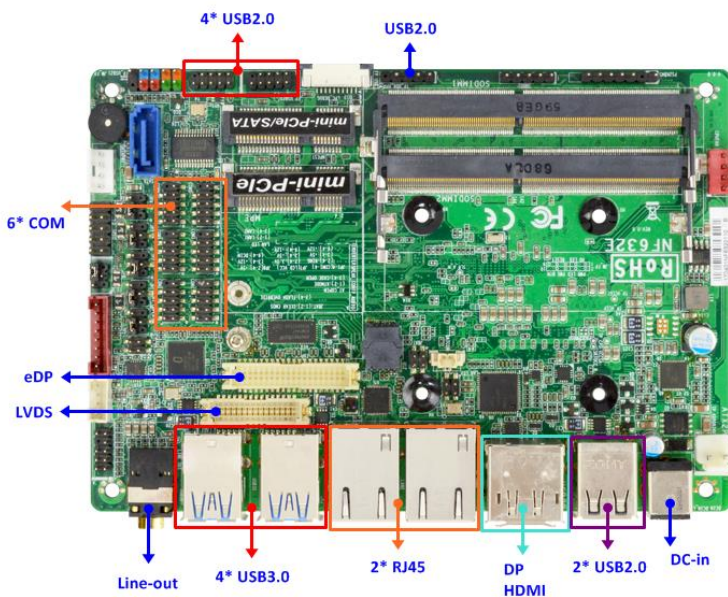
JNF632N Series

Intel® Skylake-U/Kabylake-U SoC CPU, DDR4 up to 32GB, support 4K display resolution, Support Wide Voltage 9~24V DC-in

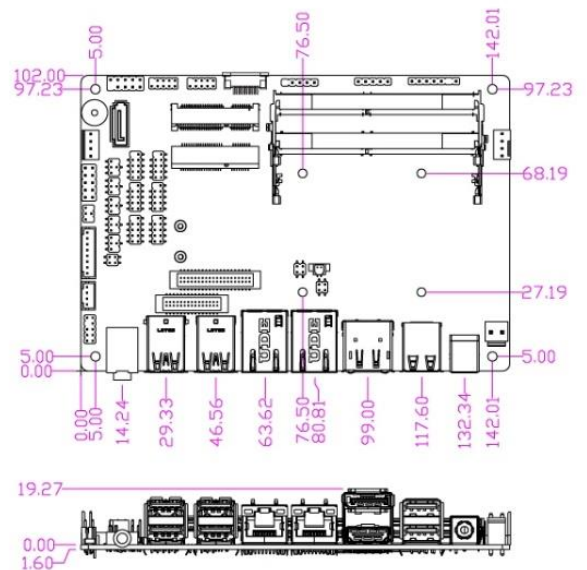
1. Intel® Skylake-U / Kabylake-U SoC Processor (Default: i5-7300U, TDP 15W)
2. 2* DDR4 SO-DIMM slot up to 32GB
3. Support DP, HDMI, eDP/LVDS (triple display)
4. Realtek **ALC888S** Audio CODEC
5. 1* SATAIII, 1* mSATA (shared with mPCIe), 1* full size mPCIe (shared with mSATA), 1* half size mPCIe
6. 5* Internal RS232, 1* Internal RS232/422/485, 4* External USB3.0, 2* External USB1.1/2.0, 5* Internal USB1.1/2.0, 2* GbE
7. Support Wide Voltage 9~24V DC-in



I/O Diagram



Mechanical Drawings (Unit = mm)



Specifications

Model	Form Factor
<ul style="list-style-type: none">JNF632N-3955UJNF632N-7200UJNF632N-7300U (Default)	3.5" SBC (148 * 102mm)
Processor System	Expansion Slot
<ul style="list-style-type: none">Intel® Skylake-U/Kabylake-U SoC Processor (TDP 15W)Intel 7300U SoC chipsetAMI 128Mb SMT Flash ROM BIOS	<ul style="list-style-type: none">2* Mini PCIe (1* full size, shared with mSATA, 1* half size)1* mSATA (full size, shared with mPCIe)
Memory	Graphics
2* Dual CH DDR4 2133MHz SDRAM SO-DIMM up to 32GB	<ul style="list-style-type: none">Intel® HD Graphics, shared memory1* LVDS (Max. 1920 x 1080@60Hz resolution) (Selectable with eDP, not working while using LVDS)1* eDP1.3 (Max. 4096 x 2304@60Hz resolution) (Selectable with LVDS, not working while using eDP)1* HDMI1.4 (Max. 4096 x 2160@24Hz resolution)1* DP1.2 (Max. 4096 x 2304@60Hz resolution)Support Triple Displays
Ethernet	Audio
<ul style="list-style-type: none">1* Intel® i219LM GbE1* Intel® i211AT GbE	2 channel HD audio: Realtek ALC885
SATA	Rear I/O
1* SATAIII (6.0Gb/s)	<ul style="list-style-type: none">1* HDMI1* DP2* RJ454* USB3.02* USB2.0Line-outDC-in
Internal Connector	Watchdog Timer
<ul style="list-style-type: none">5* USB 2.01* PS/21* LVDS (Selectable with eDP, not working while using LVDS)1* eDP (Selectable with LVDS, not working while using eDP)5* RS2321* RS232/422/4851* SATAIII (6.0Gb/s)1* Mini PCIe (full size, shared with mSATA), 1 (half size)1* mSATA (shared with mPCIe)1* GPIO (8 bit)1* Chassis intrusion1* Audio Header1* SMBUS/ I2CSupport onboard TPM2.0 (option)	<ul style="list-style-type: none">From Super I/O to drag RESETCON#256 segments (10sec ~ 255min)
Power	Compliance
DC-in 9~24V, AT/ATX Supported - AT: Directly PWR on as Power input ready - ATX: Press Button to PWR on after Power input ready	CE, FCC, RoHS, REACH
Temperature	OS Support
<ul style="list-style-type: none">Operating: 0°C ~ 60°CStorage: -20°C ~ 85°CHumidity: 10% ~ 90% RH @40°C (non-condensing)	Windows 7, 8, 10, Linux
Warranty	
2 Years Limited Warranty	

* Specifications subject to change without notice, not responsible for typographical errors. Does not include HDD or OS.

Standard Accessories

Parts Number	Description	Parts Number	Description
-----	JNF632N Series M/B	G01-SATA3-BL-1F	SATA cable
G01-COM-H2M20-1F	COM cable	G01-PW4PS-2S-322F	SATA Power cable