

# Specification

Product model: **BTP-LC-Z070086CLV01**

Updated: **2026. 03. 02**

Lay down	Examine and verify	Approval

# Catalogue

specification.....	1
2. product features.....	3
3. Interface Function Description.....	3
4. interface definition.....	5
4.1    CN1: 5V power input.....	5
4.2    CN2: HDMI input.....	5
4.4    CN3: MIPI output.....	6
5. product size.....	6
6. service environment.....	7
7. matters need attention.....	7
8. Version update.....	7

## 1. Product Overview.

A multifunctional display driver board with HDMI input and LVDS output, designed to drive an AMOLED screen model G700FCP63.A with a resolution of 1920\*1080@60Hz, supports image zooming, 90/270 rotation, Windows system, Linux system, Raspberry Pi, Android system, etc.

## 2. Product Features .

Function	Description
Power input	Type-c
Signal input	HDMI
Signal output	LVDS

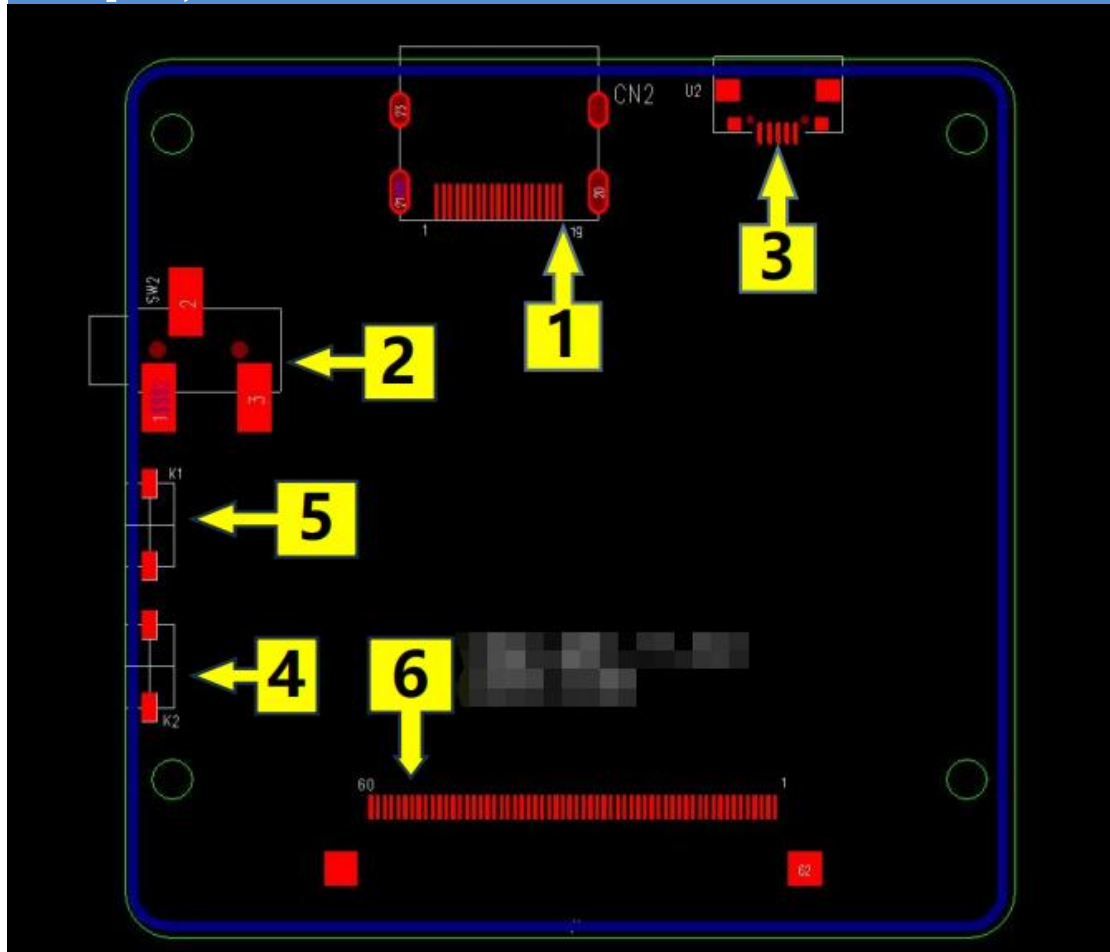
pay attention to :

- ① LVDS output board: Pay attention to the insertion direction of the board holder

## 3. Interface Function Description.

Item	Description
1	HDMI import
3	Type-c power input + touch
6	LVDS signal output ( <b>connected screen</b> )

## Top View (Interface Description)

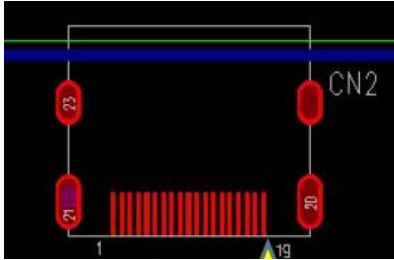


Interface :

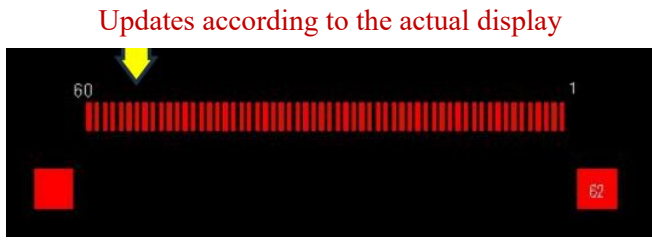
- 1 HDMI A TYPE
- 2 Audio Output
- 3 Type-c
- 4 Reset-key
- 5 brightness-key
- 6 LVDS Output

## 4. Interface Definition.

### 4. CN1: HDMI input

Pin number	Pin screen printing	Pin number	Pin screen printing	(Top view corresponding to the number)
1	DATA2 SHIELD	11	CLK+	<p>Refer to the model for interface parameters: HDMI-519</p> 
2	DATA2+	12	CLK-	
3	DATA2-	13	NC	
4	DATA1 SHIELD	14	NC	
5	DATA1+	15	SCL	
6	DATA1-	16	SDA	
7	DATA0 SHIELD	17	GND	
8	DATA0+	18	+5V POWER	
9	DATA0-	19	HOT PLUG	
10	CLK SHIELD			

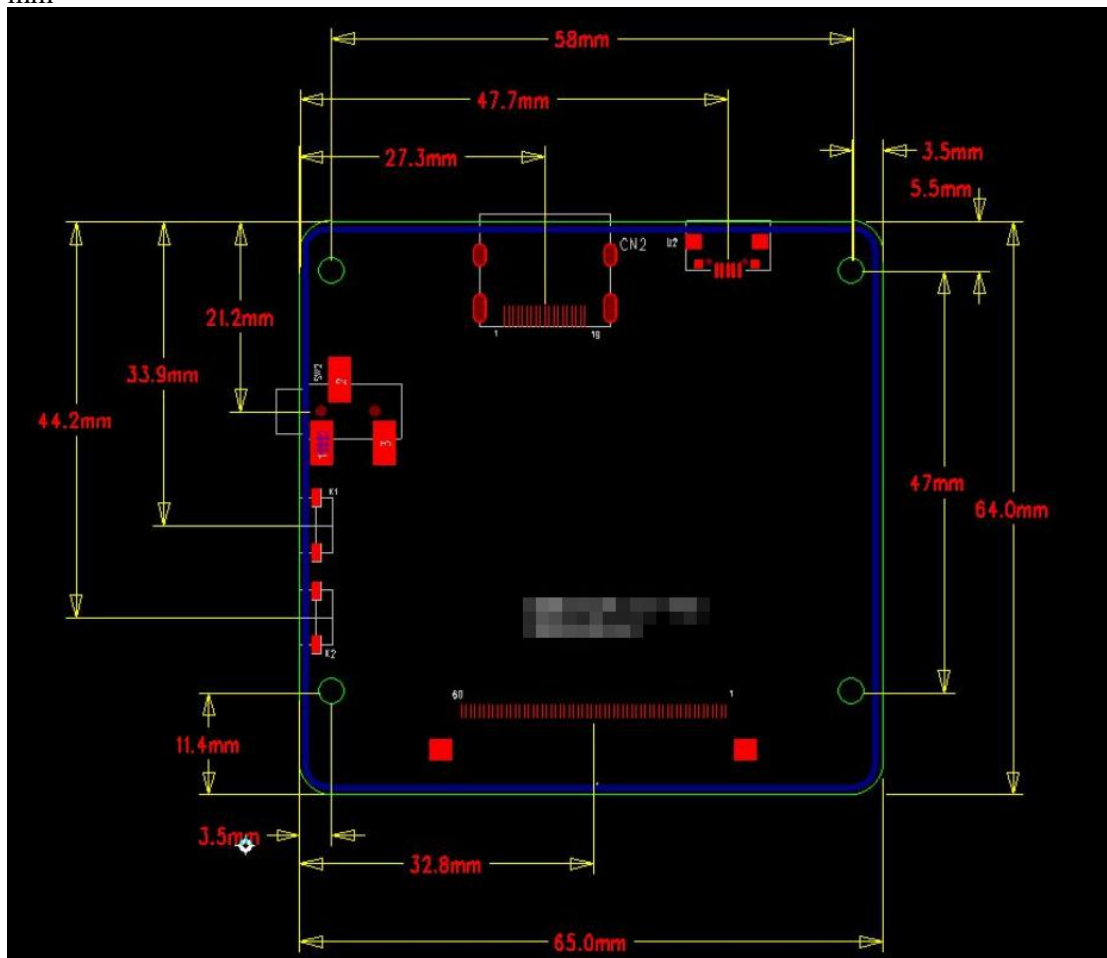
### 4.3 CN3: LVDS Output

Pin number	Pin screen printing	Top view corresponding number
Same screen specifications		

## 5. Product Size

PCB mechanical dimension unit: mm

Tolerance:  $\pm 0.3$  mm



## 6. Service Environment .

- Relative humidity (non-condensation):  $\leq 80\%$
- Storage conditions: Temperature-40°C to +80°C; Relative humidity 5-85%
- Working conditions: Temperature-20°C to +70°C; Relative humidity 20-80%

## 7. Matters Need Attention .

- Keep the circuit board away from strong static electricity.
- Select a suitable power adapter, as both overvoltage and undervoltage may cause operational issues or even damage.
- **Check the orientation of the connection cable and verify the screen voltage before powering on, otherwise the LCD module may be damaged.**
- When the circuit board is in operation, prevent metal particles from falling into it.
- Do not plug or unplug connectors while the circuit board is in operation.
- Do not disassemble the module.
- If the surface of the motherboard is dirty, clean it with a soft cloth (not a wet cloth).

## 8. Version Update.

Rev./ version number	Date/ date	Note/ remarks
V1.0	2026-03-02	Editio princeps