

Technical Specifications

Model: SNT-IR-TFP-21.5

● Product Description

1. High Accuracy Infrared touch frame, Resolution by interpolation algorithm to 4096*4096
2. Adapt to various application environments
3. Drive-free, plug and play

● Major Technical Specifications

Frame Material	Aluminium Alloy
Color	Black
Cover Glass	Build-in 3mm Tempered Glass
Resolution	4096*4096
Response Time	≤15ms
Touch Accuracy	±2mm
Input Method	Finger, touch pen or other non-transparent object
Output format	Coordinate Output
Touch Times	Unlimited theoretically
Minimum Touch Object	5mm
Ports Type	USB

● Electronic Features

Refresh Rate		200Hz
USB	Terminal Type	Type A USB
	COM Ports	USB-D+和 USB-D-
Power Supply		USB Power
Voltage		DC+5V±5%
Working Current		<200mA

● Environment Features

ITEM	Specs.
Temperature Scope	Operating Temperature: -10°C~50°C
	Warehousing Temperature: -20°C~60°C
Relative Humidity	Operating Humidity: 10%~ 85% RH, no condensation
	Warehousing Humidity: 10%~ 90% RH, no condensation
Light Resistance	With some level light resistance

● Software Features

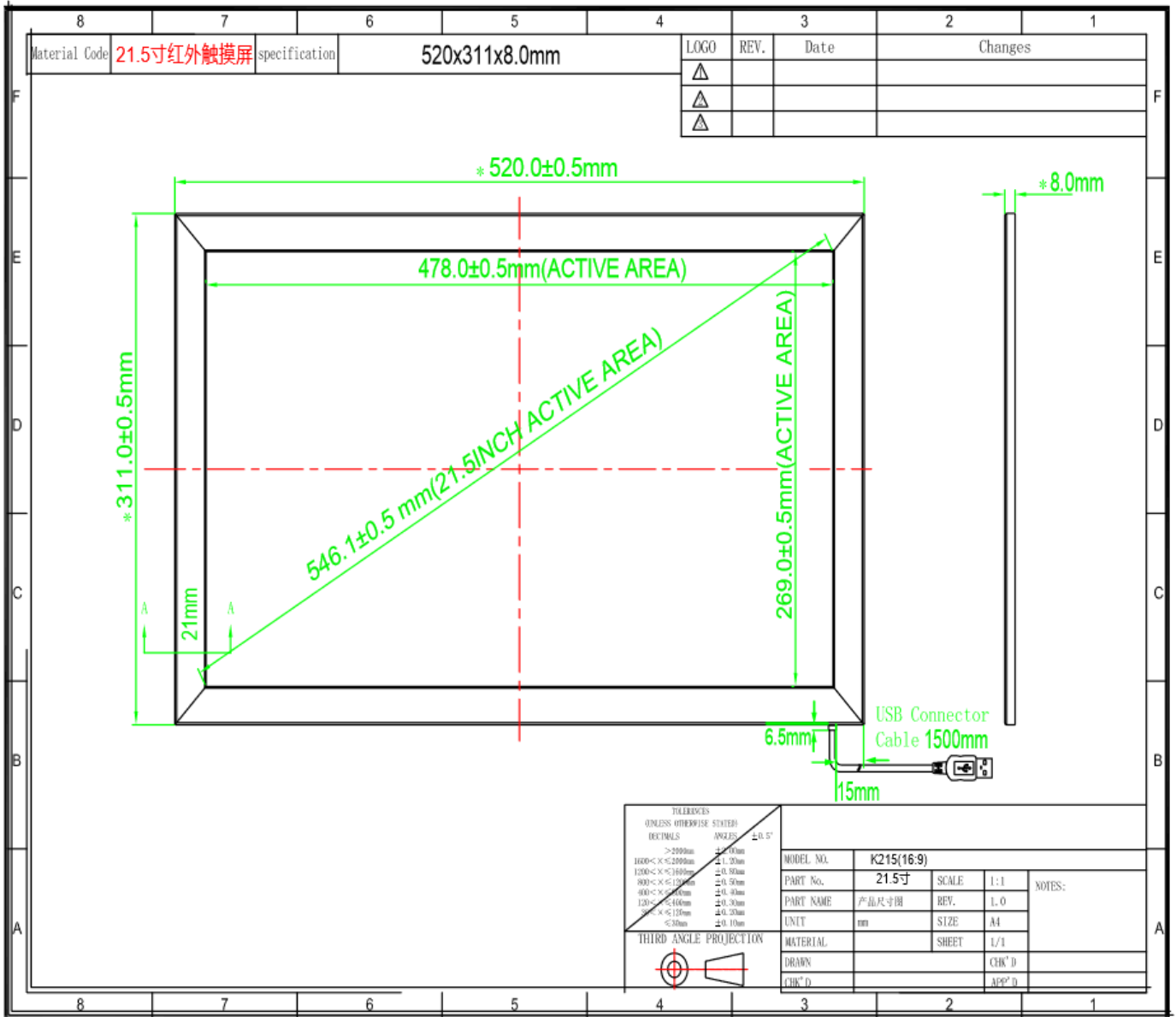
ITEM	Specs.
Touch Type	Single/Dual Touch
OS Supported	Windows 7/8/10/Windows XP/Vista/Linux/Android

● Reliability

ITEM	Testing Conditions	Judgement
High-temperature/High Humidity Operating	Temperature: 50°C Humidity: 85% no condensation Working Continuous 24 Hours	Performs Normally
Low-temperature Operating	Temperature: -10°C Working Continuous 24 Hours	Performs Normally
Low-temperature Warehousing	Temperature: -20°C Working Continuous 24 Hours, 2 hours in Normal indoor Temperature	Performs Normally
High-temperature, High-Humidity Warehousing	Temperature: 60°C Humidity: 90% no condensation Working Continuous 24 Hours, 2 hours in Normal indoor Temperature	Performs Normally
USB plug test	2000times each under windows 7 and windows XP	Performs Normally
System Restart	1000 times each under windows 7 and windows XP	Performs Normally
Basic Function	Signal and Line drawing	Performs Normally

● Technical Drawing





Touch the World
让触摸感动世界