

1. Product characteristics

product model	BTP-LC-RTD2674	
Screen panel	Drive screen interface	
	LVDS	Single 6-bit LVDS and single 8-bit LVDS support 1366 * 768@60Hz
		Double 8-bit LVDS and double 10-bit LVDS support 1920 * 1200@60Hz
signal input	signal interface	
	VGA	Up To1920*1200@60Hz
	DVI	Up To1920*1200@60Hz
	HDMI	Up To1920*1080@60Hz
	CVBS1	PAL NTSC
	CVBS 2 (Optional)	PAL NTSC
	CVBSOut (Optional)	PAL NTSC
Audio output	Max Out Power	2 × 10W (8 Ω) THD+N<10%@1KHz (PowerSupply: 12V, Audio Input: 0.5VRMS)
	Frequency response	100Hz-15KHz@± dB(1KHz 0dB reference signal)

picture	Picture in the picture, picture outside the picture, double picture
---------	---

www.sinotelectronics.com

source	working voltage	Either 12V or 24V
	Drive screen voltage	3.3V or 5V or 12V
	Power mode	Supports low-power mode, and standby mode
	Standby power consumption	<1W
OSD language	English, Chinese,	
Key function	POWER, MENU, +/-, AUTO/EXIT	

2. Description of the interface definition

order number	interface specification
JW1	Power supply input interface (terminal)
CN1	The LVDS signal output interface
CN2	Power supply 12V input interface
CN3	Backlight interface
CN15	The key board and the indicator light interface
CN16	Serial port control interface
CN19	Horn output interface

1: CN1 LVDS signal output interface

order	Interface	order	Interface
-------	-----------	-------	-----------

number	definition	number	definition
1	VSEL	18	RX03+
2	VSEL	19	RXE0-
3	VSEL	20	RXE0+

www.sinotelectronics.com

4	GND	21	RXE1-
5	GND	22	RXE1+
6	GND	23	RXE2-
7	RX00-	24	RXE2+
8	RX00+	25	GND
9	RX01-	26	GND
10	RX01+	27	RXEC-
11	RX02-	28	RXEC+
12	RX02+	29	RXE3-
13	GND	30	RXE3+
14	GND	31	RXE4-
15	RX0C-	32	RXE4+
16	RX0C+	33	RX04-
17	RX03-	34	RX04+

Two: CN2 power supply 12V input interface

order number	Interface definition	order number	Interface definition
1	12V	3	GND
2	12V	4	GND

Three: CN 3 backlight interface definition

order number	Interface definition	order number	Interface definition
--------------	----------------------	--------------	----------------------

1	GND	4	EN
2	GND	5	12V
3	ADJ	6	12V

Four: definition of interface between CN 15 key board and indicator light

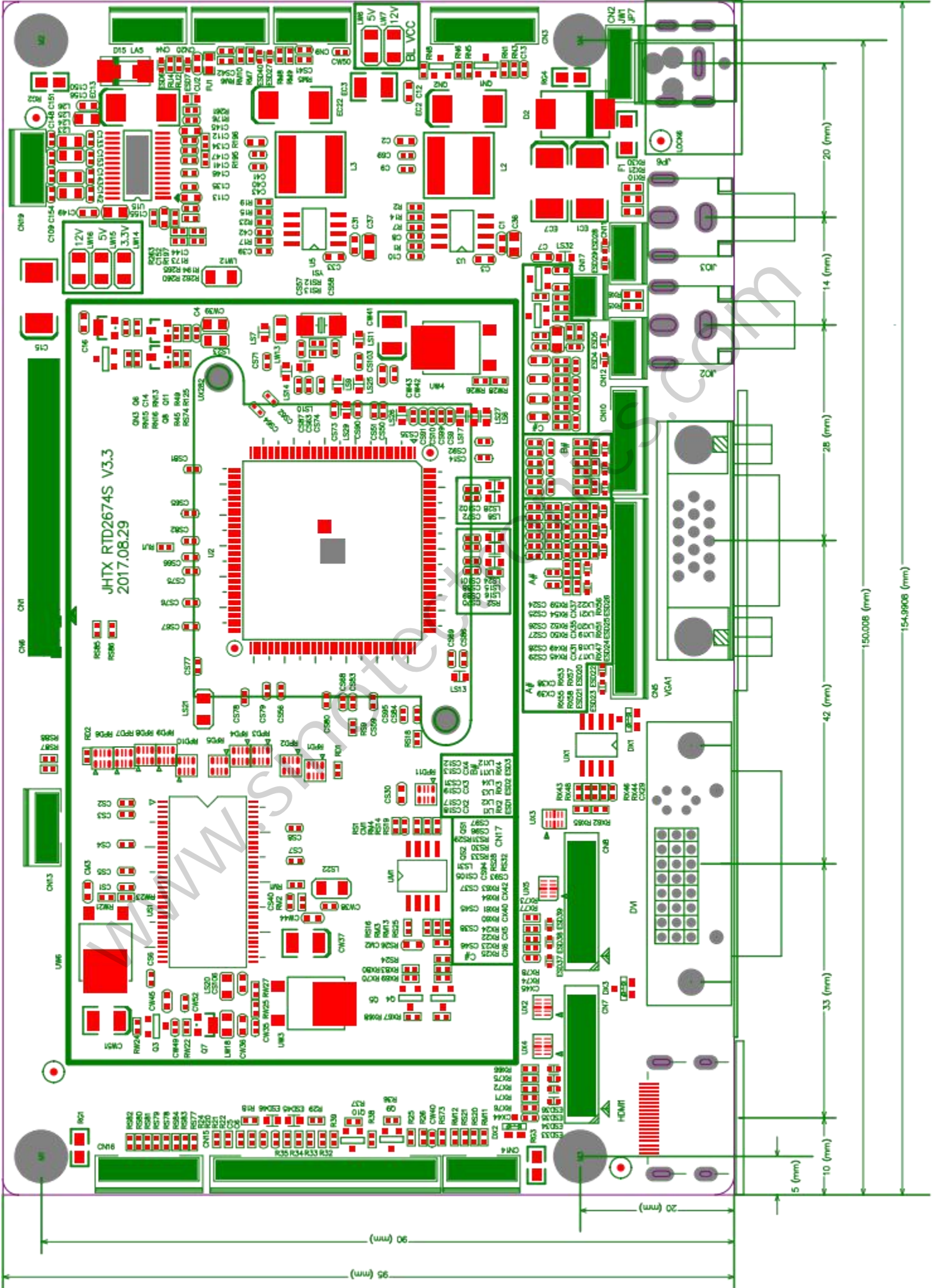
order number	Interface definition	order number	Interface definition
1	K0	6	K2
2	LED R	7	K3
3	LED G	8	K4
4	GND	9	K5
5	K1	10	K6

5: CN 16 serial port input interface

order number	Interface definition	order number	Interface definition
1	RX	4	GPI/O
2	TX	5	GND
3	GPI/O	6	+5V

Six: CN 19 horn output interface definition

order number	Interface definition	order number	Interface definition
1	L Out	3	GND
2	GND	4	R Out



150.008 (mm)

154.9908 (mm)

20 (mm)

14 (mm)

28 (mm)

42 (mm)

33 (mm)

10 (mm)

20 (mm)

5 (mm)

90 (mm)

95 (mm)

