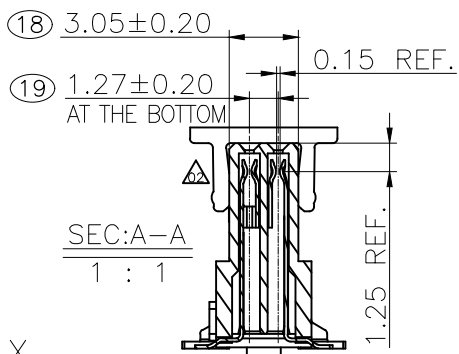
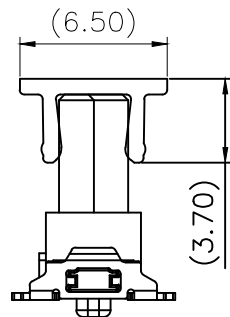


No. of PIN/ROW	Dimension Information						
	A	B	C	D	E	F	G
2x06	8.37	6.35	10.10	9.37	10.77	11.87	12.60
2x08	10.91	8.89	12.64	11.91	13.31	14.41	15.14
2x10	13.45	11.43	15.18	14.45	15.85	16.95	17.68
2x13	17.26	15.24	18.99	18.26	19.66	20.76	21.49
2x16	21.07	19.05	22.80	22.07	23.47	24.57	25.30
2x20	26.15	24.13	27.88	27.15	28.55	29.65	30.38
2x25	32.50	30.48	34.23	33.50	34.90	36.00	36.73
2x34	43.93	41.91	45.66	44.93	46.33	47.43	48.16
2x40	51.55	49.53	53.28	52.55	53.95	55.05	55.78



Pin No.	Dim.H
≤25pin	0.12
>25pin	0.15

REV.	LOCAS.	DESCRIPTION	DATE	DRAWN
01	NEW	BATCH PRODUCTION INITIAL RELEASE.	2022.12.28	賴昌僥
02	△	端子凸包變更·更新圖面	2023.03.28	賴昌僥

Specifications
 Current Rating: 1.7Amp For 2x6Pin Product, 0.8 Amp For Product With Other Pin Numbers.
 Insulation Resistance: 10000MΩMin.
 Dielectric Withstanding Voltage: 500VAC
 Contact Resistance: 25mΩMax.
 Operating Temperature: -55°C to +125°C
 Materials

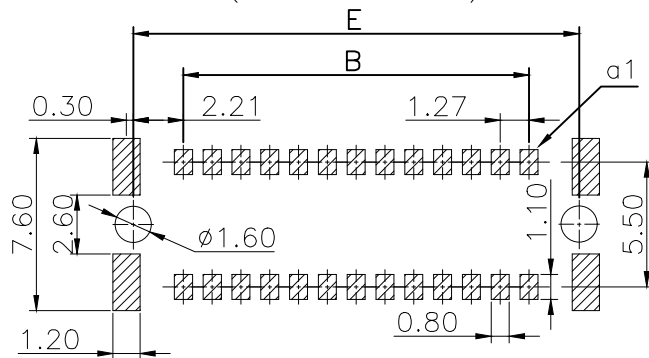
Contact Material: Phosphor Bronze
 Insulator Material: High Temperature Thermoplastic, UL 94V-0 LCP or the equivalent material

☆ All materials must meet GREENCONN hazardous substances control standards.

"★": Critical Characteristics, indicates product characteristics, functionalities, and manufacturing processes regarding to customer's specifications

"☆": Safety Features, indicates product characteristics, functionalities, and manufacturing processes complying to legal regulations stated by local government

Recommended P.C.Board Layout
 (Tolerance: ±0.05)



Ordering Information

C BEC223- XX XX B 001 C 1 A X

No. of Pins per Row
 06,08,10,13,16,
 20,25,34,40

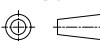
Standard Plating
 79=5u"Au/80~160u"Matte Tin
 Selective Plating
 05=1u"Au/80~160u" Tin

Color
 1=Black

Standard Packing
 F=Cap+Tape&Reel
 Selective Packing
 C=Tube
 E=Cap+Tube



3RD.ANG PROJ.



PAGE. 1/1

GENERAL TOLERANCE

X.*±5.0°	X.±0.30
.X.*±3.0°	.X.±0.25
.XX.*±2.0°	.XX±0.15
.XXX.*±1.0°	.XXX±0.10

DESIGNED: 賴昌僥

DATE: 2023.03.28

CHECKED: 張春進

DATE: 2023.03.28

APPROVED: 邱國延

DATE: 2023.03.28

DWG. NO.

CBEC223-CB001

PART NO.

CBEC223-XXXXB001C1AX

TITLE.

1.27 BOARD TO BOARD FEMALE DUAL ROW SMT TYPE CONNECTOR

REV. 02

UNIT. mm

SCALE. 3:1