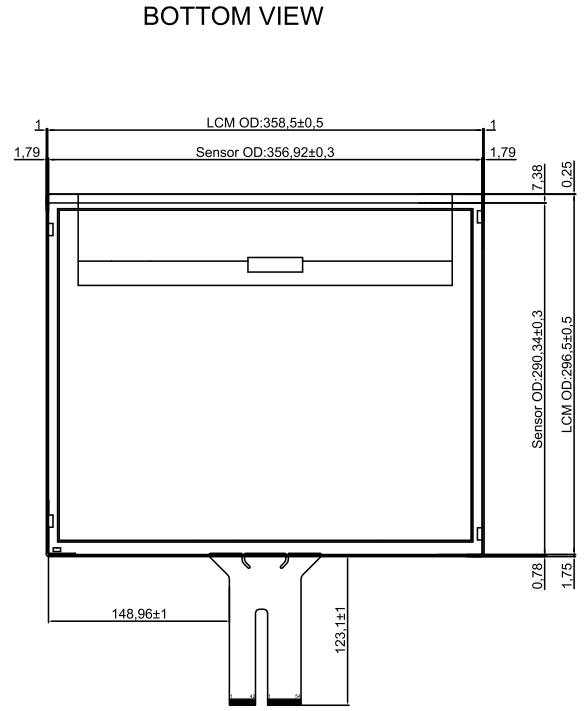
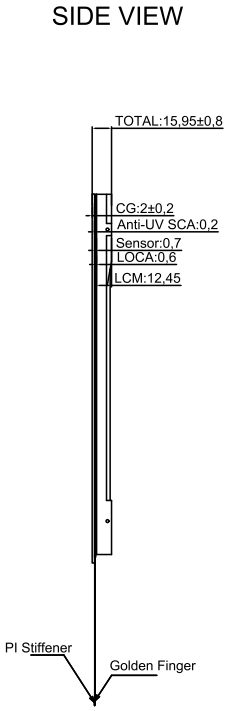
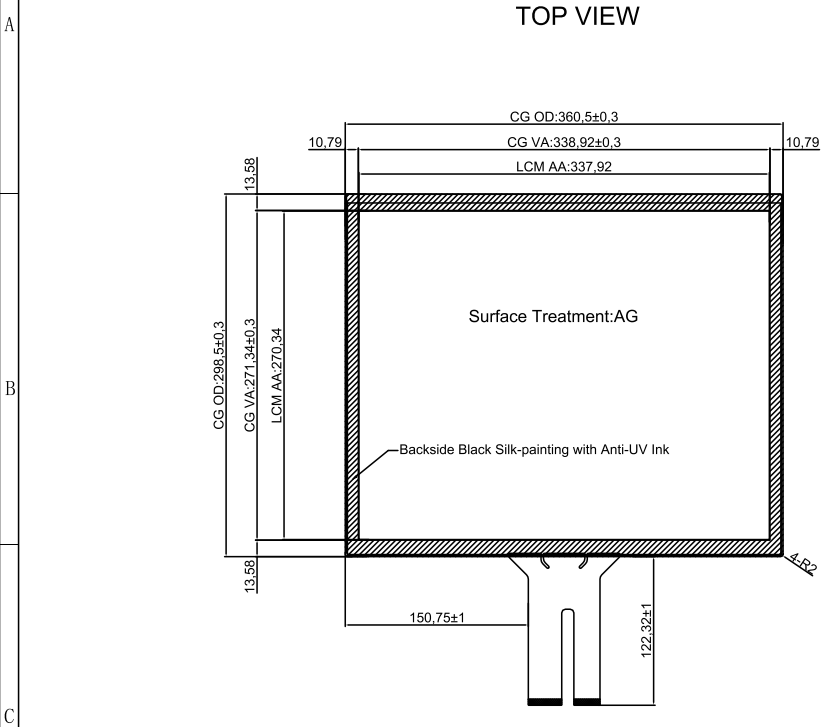
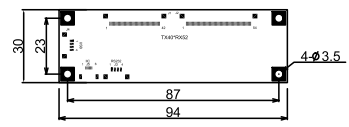


Ver.	modify NO.	Details	Area	P.I.C	Date



CONTROLLER  
SC 2:1



USB PIN ASSIGNMENT

1	VBUS
2	DN
3	DP
4	GND

- Technical Datasheet:
1. Structure: TP+LCM Optical Bonding
  2. Cover Glass: 2mm Tempered Glass
  3. LCD: G170ETN02.1(1000nits)
  4. TP Controller: BTP-TPM-CTR-ILI-170B-SN12
  5. TP Controller IC: ILI2510
  6. Surface Hardness: ≥6H
  7. Light Transmittance: ≥85%
  8. Working Temperature: -20℃~+70℃, ≤85%RH;
  9. Storage Temperature: -30℃~+80℃, ≤85%RH;
  10. Unmarked Tolerance: ±0.5mm
  11. All materials used conform to RoHS standard

Part No.	BTP-TPM-G1-17-ILI-SN12		
Product Name: 17 inch Touch Display (TP+LCM Optical Bonding)	Drawing No.	PM170240710SN12	
	Project Code.	PM170SN12	
Business Unit: SNT-BTP	Period Mark	View Angle	Ratio
	A		1:1
Workmanship:	Yong.Xin	BOM Code	2.03.170.01.0112
Standardization:	Link.Chen	Page 1	Total 1 Page
Released by:	Rocky.Liu	Product Series	BTP-TPM
		<b>SINOTECTRONICS</b> Interactivity Changes the World	