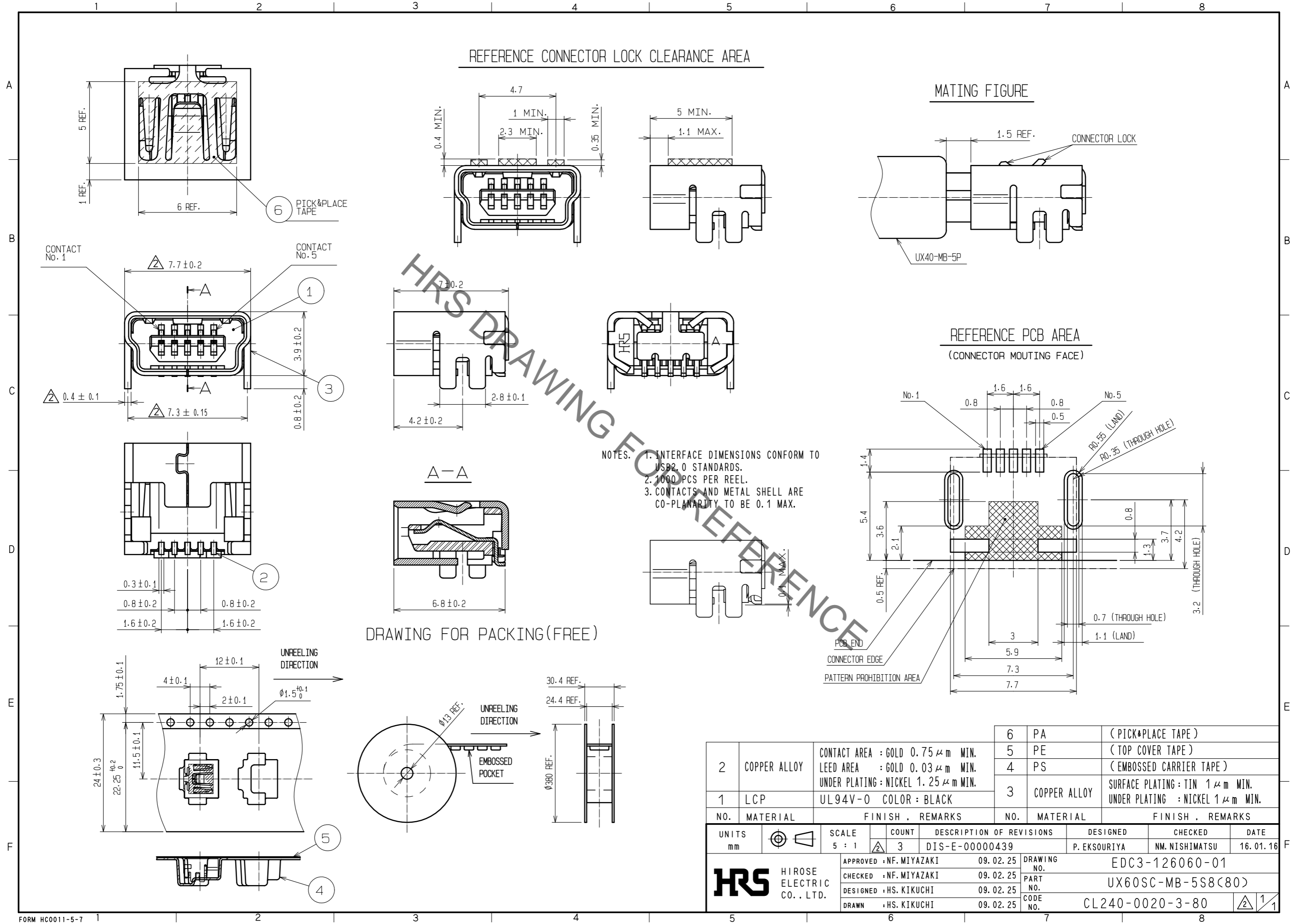


Mar.1.2020 Copyright 2020 HIROSE ELECTRIC CO., LTD. All Rights Reserved.
In case of consideration for using Automotive equipment / device which demand high reliability, kindly contact our sales window correspondents.



NOTES.
 1. INTERFACE DIMENSIONS CONFORM TO USB2.0 STANDARDS.
 2. 1000 PCS PER REEL.
 3. CONTACTS AND METAL SHELL ARE CO-PLANARITY TO BE 0.1 MAX.

2	COPPER ALLOY	CONTACT AREA : GOLD 0.75 μm MIN. LEED AREA : GOLD 0.03 μm MIN. UNDER PLATING : NICKEL 1.25 μm MIN.	6	PA	(PICK&PLACE TAPE)
1	LCP	UL94V-0 COLOR : BLACK	5	PE	(TOP COVER TAPE)
			4	PS	(EMBOSSSED CARRIER TAPE)
			3	COPPER ALLOY	SURFACE PLATING : TIN 1 μm MIN. UNDER PLATING : NICKEL 1 μm MIN.
NO.	MATERIAL	FINISH . REMARKS	NO.	MATERIAL	FINISH . REMARKS
UNITS	mm	SCALE	5 : 1	COUNT	3
		DESCRIPTION OF REVISIONS	DESIGNED	CHECKED	
		DIS-E-00000439	P. EKSOURIYA	NM. NISHIMATSU	
		DATE	16.01.16		
APPROVED : NF. MIYAZAKI		09.02.25	DRAWING NO. EDC3-126060-01		
CHECKED : NF. MIYAZAKI		09.02.25	PART NO. UX60SC-MB-5S8(80)		
DESIGNED : HS. KIKUCHI		09.02.25	CODE NO. CL240-0020-3-80		
DRAWN : HS. KIKUCHI		09.02.25	1/1		