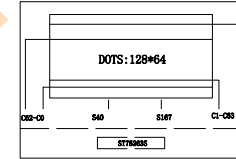
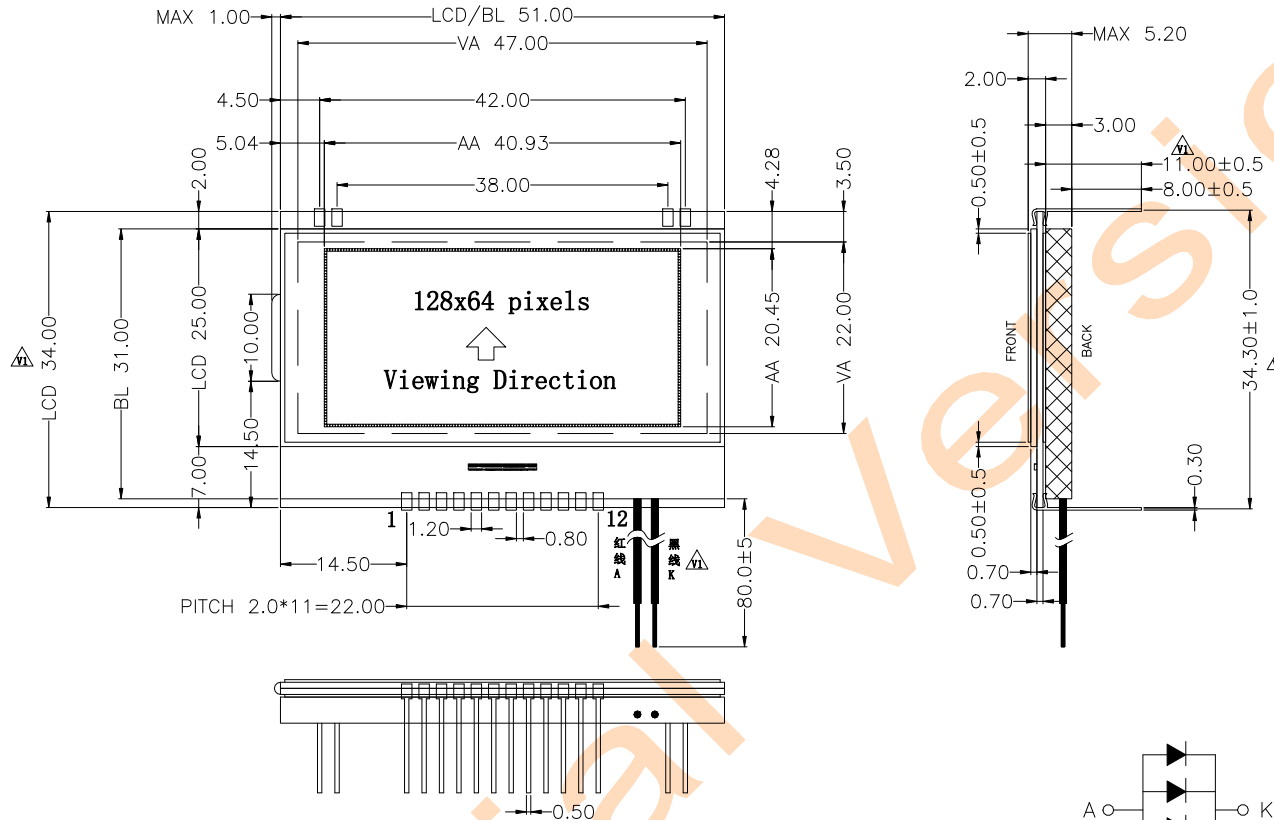


图形点阵-1

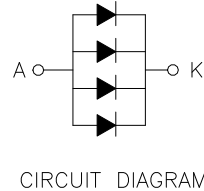
RoHS

NO.	CONTENT	DRAWN	DATE
A	First Issue	LXY	20250610
M	修改外形尺寸和PIN长度, 将背光端子改为导线	LXY	20250625
E			
N			
D			



COM & SEG LAYOUT

PIN ASSIGNMENT:	
1	VG
2	VO
3	XVO
4	CAPVDD
5	CAPVSS
6	VDD
7	VSS
8	CS
9	A0
10	RST
11	SCL
12	SDA



CIRCUIT DIAGRAM

DISPLAY TYPE	FSTN, POSITIVE/TRANSFLECTIVE	OPERATING TEMP.	-40°C TO +70°C
DRIVING METHOD	1/64DUTY, 1/9BIAS	STORAGE TEMP.	-40°C TO +70°C
OPERATING VOLTAGE	VDD:3.3V, VLCD:11.2V	DRIVER IC	ST75263S
VIEWING DIRECTION	6 O'CLOCK	BACKLIGHT	White LED(X4) If:60mA, Vf:3.0V
CONNECTION	PIN	Environmental Protection	RoHS Compliant

MARK "Ⓐ" ARE IMPORTANT DIMENSION, MARK "()" ARE REFERENCE DIMENSION, MARK "Ⓢ" ARE SPECIAL CHARACTERISTICS RELATED TO SAFETY, MARK "Ⓜ" ARE SPECIAL CHARACTERISTICS RELATED TO REGULATORY, MARK "Ⓞ" ARE KEY FEATURES CHARACTERISTICS.

深圳市福瑞达显示技术有限公司 Shenzhen Frida LCD Co., Ltd					Page	1/1
					DRAWING	LXY
TITLE.	段码屏	REV.	UNIT	SIZE		CHECK
MODEL.	FRD83777GGPW	V1	mm	A4		APPROVE