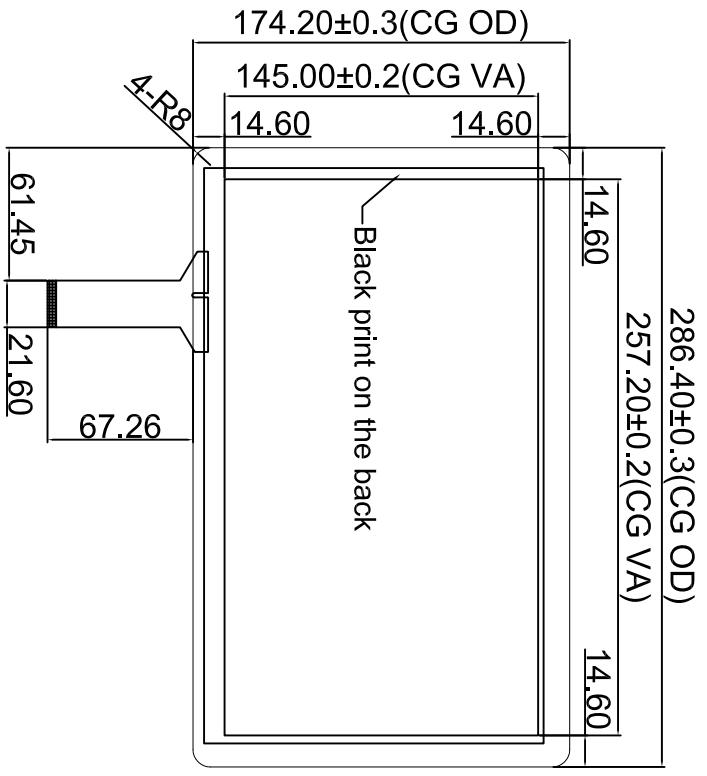
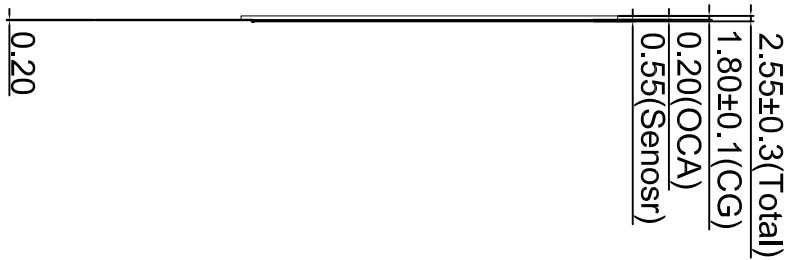


No.	Rev.	Revision Record	Name	Date.
△	V01	First Release	Bill	2021.06.09

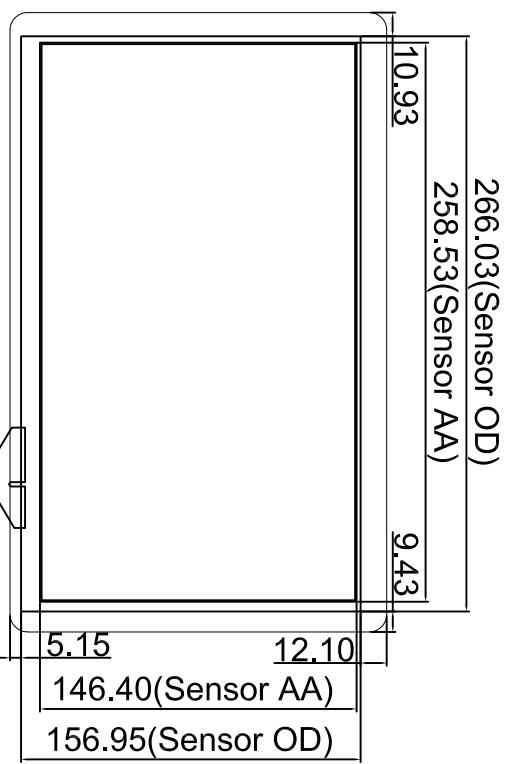
Front view



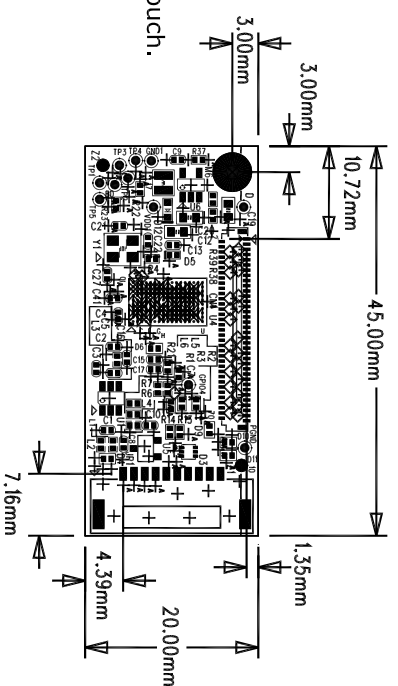
Side view




Back view



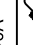
- Technical Spec:
1. COVER LENS : Soda lime
  2. Chemical strength glass, surface hardness  $\geq 7H$
  3. Transmittance  $\geq 86\%$
  4. IC : EFTI 80H7132(TX21\*RX36), 10 points touch.
  5. Interface : USB/I2C
  6. Common tolerance  $\pm 0.3mm$
  7. Follow RoHS standard
  8. Operating Temperature:  $-20^{\circ}C \sim +70^{\circ}C$
  - Storage Temperature:  $-30^{\circ}C \sim +80^{\circ}C$



No.	Pin define
1	GPIO1
2	GPIO3
3	D+
4	D-
5	VDDIO(3.35V)
6	GND
7	INT3(3V)
8	SP4(3.3V)
9	SCL(3.3V)
10	RST(3.35V)



**Sense Touch Technology, Inc**

Rev	V01	Model No.	ST-116C06G
Sheet	1 / 1	Customer P/N	
Unit	mm	Designed	Bill
Scale	1 : 1	Checked	Date
Viewpoint		Approved	Date

