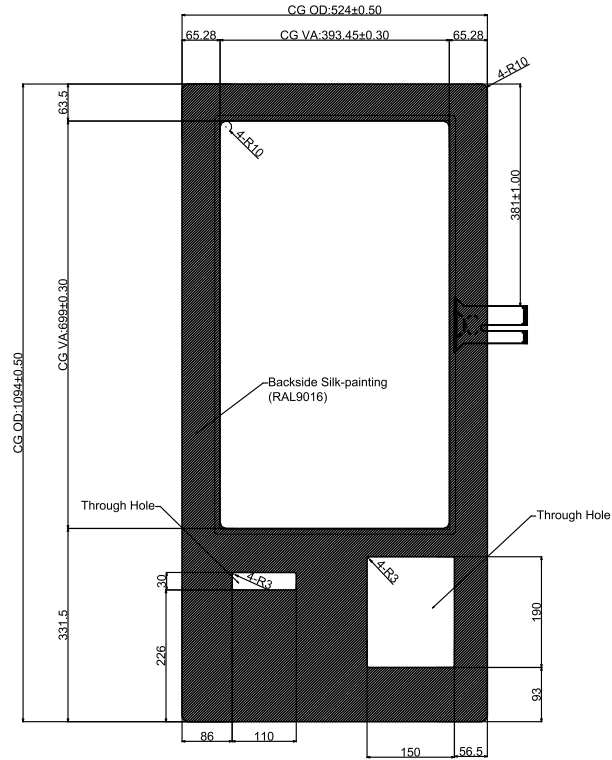
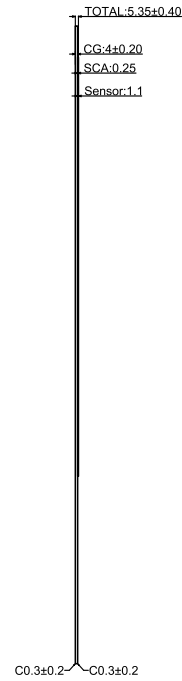


Ver.	Modify No.	Details	Area	P.I.C	Date

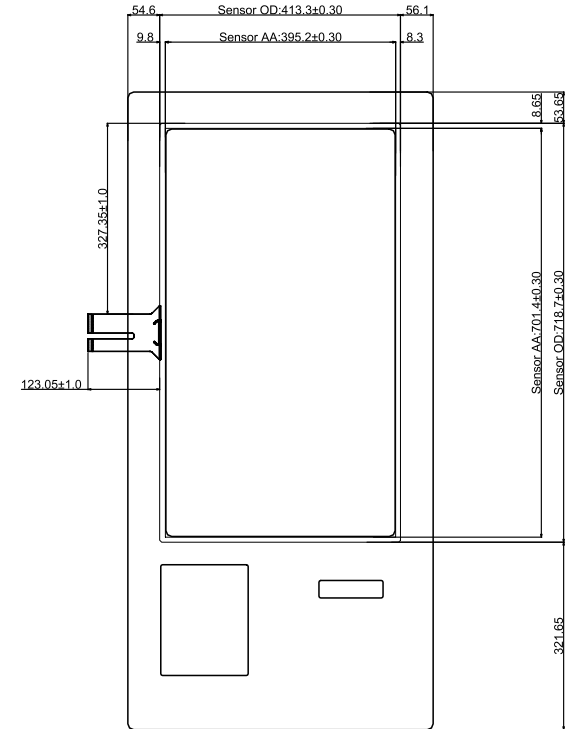
Front View



Side View

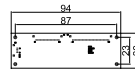


Back View



Technical Datasheet:

1. Structure: Cover Glass+SCA+ITO Glass
2. Controller: BTP-GG-CTR-ILI-320B-SN18 COB
3. Controller IC: ILI 2510
4. Cover Glass: T=4mm, Tempered Glass
5. Surface hardness ≥6H
6. Light transmittance: ≥85%
7. Working Temperature: -20℃~+70℃, ≤85%RH;
8. Storage Temperature: -30℃~+80℃, ≤85%RH;
9. Unmarked Tolerance: ± 0.5 mm;
10. All material used conform to RoHS standards



Controller Board

Part No.		BTP-GG-TPB-32-ILI-SN18			
Product Name: 32 inch Touch Panel		Drawing No.		G320250908SN18	
		Project Code.		G320SN18	
Business Unit: SNT-BTP		Period Mark	View Angle	Ratio	
		A		1:1	
Workmanship:		BOM Code		1.03.320.01.0118	
Standardization:		Product Series		BTP-GG	
Released by:		Page 1		Total 1 Page	
Designed by: Curry.Wang		思诺泰科电子(苏州)有限公司 SINOTRONICS INC.			
Checked by: Jimmy.Lu					
Approved by: Cale.Chen					
Workmanship: Link.Chen					
Released by: Rocky.Liu					