

**TENTATIVE**

All information in this technical data sheet is tentative  
and subject to change without notice.

# 15.0" WHD (1920 x 720)

Part name: TFT LCD module

## TECHNICAL SPECIFICATION

COMPANY PROPERTY  
NOT TO BE REPRODUCED OR DISCLOSED WITHOUT SPECIFIC  
WRITTEN PERMISSION OF MITSUBISHI ELECTRIC CORPORATION  
(THIS IS A RED INK STAMP)

AA150AC01

(ES: Engineering Sample)

MITSUBISHI ELECTRIC CORPORATION  
LCD DIVISION

Date: Feb 12, 2019

# CONTENTS

No.	Item	Page
--	COVER	1
--	CONTENTS	2
1	APPLICATION	3
2	OVERVIEW	4
3	ABSOLUTE MAXIMUM RATINGS	5
4	ELECTRICAL CHARACTERISTICS	6, 7, 8, 9
5	INTERFACE PIN CONNECTION	10, 11, 12, 13
6	INTERFACE TIMING	14
7	FAILURE DETECTION	15
8	BLOCK DIAGRAM	16
9	MECHANICAL SPECIFICATION	17
10	OPTICAL CHARACTERISTICS	18, 19
11	RELIABILITY TEST CONDITION	20
12	HANDLING PRECAUTIONS FOR TFT-LCD MODULE	21, 22
13	REVISION STATUS	23, 24

# 1. APPLICATION

This specification applies to color TFT-LCD module AA150AC01, its development phase is Engineering sample (ES).

These specification papers are the proprietary product of Mitsubishi Electric Corporation (“MITSUBISHI”) and include materials protected under copyright of MITSUBISHI. No part of this document may be reproduced in any form or by any means without the express written permission of MITSUBISHI.

MITSUBISHI does not assume any liability for infringement of patents, copyrights or other intellectual property rights of third parties by or arising from use of a product specified in this document. No license, express, implied or otherwise, is granted under any patents, copyrights or other intellectual property rights of MITSUBISHI or of others.

MITSUBISHI classifies the usage of the TFT-LCD module as follows. Please confirm the usage before using the product.

## (1) Standard Usage

Computers, office equipment, factory automation equipment, test and measurement equipment, communications, transportation equipment (automobiles, ships, trains, etc.), provided, however, that operation is not influenced by TFT-LCD directly.

## (2) Special Usage

Medical equipment, safety equipment, transportation equipment, provided, however, that TFT-LCD is necessary to its operation.

## (3) Specific Usage

Cockpit equipment, military systems, aerospace equipment, nuclear reactor control systems, life support systems and any other equipment. MITSUBISHI should make a contract that stipulate apportionment of responsibilities between MITSUBISHI and our customer.

The product specified in this document is designed for “Standard Usage” especially considered for automobile applications. If customers intend to use the product for applications other than those specified for “Standard Usage”, they should contact MITSUBISHI sales representative in advance.

MITSUBISHI has been making continuous effort to improve the reliability of its products. Customers should implement sufficient reliability design of their application equipments such as redundant system design, fail-safe functions, anti-failure features.

MITSUBISHI assumes no responsibility for any damage resulting from the use of the product that does not comply with the instructions and the precautions specified in this document.

Please contact and consult a MITSUBISHI sales representative for any questions regarding this product.

## 2. OVERVIEW

AA150AC01 is 15.0" color TFT-LCD (Thin Film Transistor Liquid Crystal Display) module composed of LCD panel, driver ICs, controller PCB, metal housing and backlight unit. By applying 8 bit digital data, 1920x720, 16.7M-color images are displayed on the 15.0" diagonal screen. The type of data and control signals are digital and transmitted via LVDS interface per Typ. 87.065MHz clock cycle.

### 2-1. General

LED driver for backlight is not included in this module. General specifications are summarized in the following table: (Model name: AA150AC01)

ITEM	SPECIFICATION
Display Active Area (mm)	355.68(H) x 133.38(V) (15.0-inch diagonal)
Number of Dots	1920 x 3(H) x 720(V)
Pixel Pitch (mm)	0.18525(H) x 0.18525(V)
Color Pixel Arrangement	RGB vertical stripe
Display Mode	Normally black, In-plane switching
Number of Color	16.7M(8bit/color)
Luminance (cd/m <sup>2</sup> )	1000
CR	1000:1
Viewing angle (CR≥10)	Min. -85~85°(Horizontal) Min. -85~85°(Vertical)
Surface Treatment	AG
Interface	1ch LVDS
Inversion viewing angle	N/A
Module Size (mm)	374.5(W) x 154.5 (H) x 11.6(D) without bosses for mounting
Module Mass (g)	TBD
Backlight Unit	LED (edge light)

Characteristic value without any note is typical value.

### 3. ABSOLUTE MAXIMUM RATINGS

ITEM	SYMBOL	MIN.	MAX.	UNIT
Power Supply Voltage for LCD	VCC	-0.3	+4.0	V
Input signal voltage	VI	-0.3	VCC+0.3	V
Operation Temperature(Ambient) *2)	T <sub>op(Ambient)</sub>	-40	+85	°C
Storage Temperature *2) *3)	T <sub>stg</sub>	-40	+90	°C

[Note]

Absolute maximum ratings are the value that should never pass. If used beyond the absolute ratings, LCD may not recover to specified characteristics and it may also cause permanent damage.

When designing circuit, power supply, connector, surge of input signal, and surrounding temperature, please be careful not to pass absolute maximum ratings.

[Note]

\*1) Top, Tstg -40°C: 90%RH max. without condensation

Top, Tstg -40°C: Absolute humidity shall be less than the value of 90%RH at 40°C without condensation.

\*2) Backlight: OFF

## 4. ELECTRICAL CHARACTERISTICS

(1)TFT-LCD

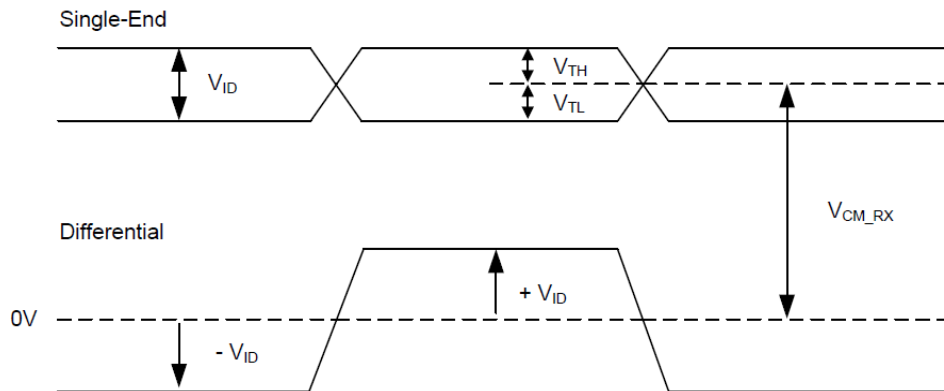
Ambient Temperature: Ta = 25°C

Parameter	Symbol	Extreme Ratings			Unit	Remarks
		Min.	Typ	Max.		
Power Supply voltage	VCC	(3.0)	(3.3)	(3.6)	V	
Power supply current	ICC	--	(750)	(1100)	mA	
Input voltage ' H ' level of logic	VIH	0.8 x VCC	--	VCC	V	
Input voltage ' L ' level	VIL	GND	--	0.2 x VCC	V	
High Level Output Voltage	VOH	VCC-0.4	--	--	V	IOH = -4mA
Low Level Output Voltage	VOL	--	--	0.4	V	IOL = 4mA
LOOP Back Resistance	R <sub>LB</sub>	--	--	(100)	ohm	

(2)LVDS receiver DC characteristics

VCC=3.3V, Ambient Temperature ; Ta = 25°C

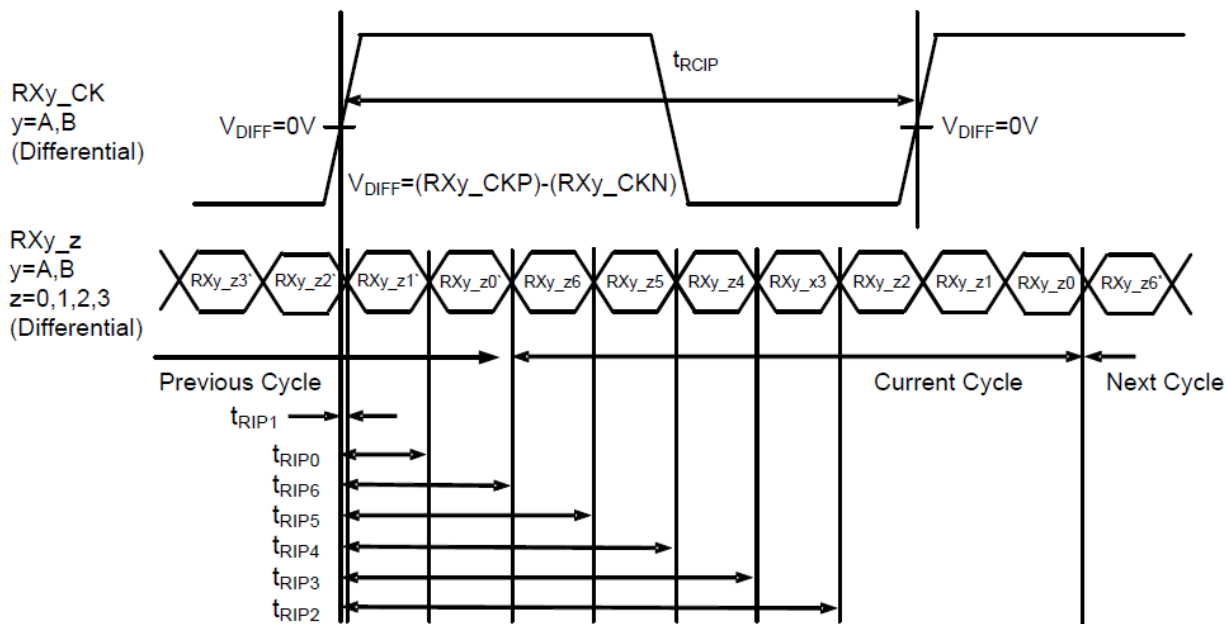
Parameter	Symbol	Min	Typ	Max	Unit	Conditions
Differential Input Voltage	VID	100		600	mV	
Differential Input "H" Threshold	VTH	-	-	50	mV	VCM = 1.2V
Differential Input "L" Threshold	VTL	-50	-	-	mV	VCM = 1.2V
Differential Input VID = 200mV Common Mode Voltage	VCM	VID  /2	1.2	2.4-  VID  /2	V	



LVDS Receiver DC Characteristics Definition

(3)LVDS receiver AC characteristics

Parameter	Symbol	Limit			Unit	Conditions
		Min	Typ	Max		
LVDS Clock Frequency	$f_{IN}$	(85.0)	-	(104.0)	MHz	
LVDS Clock Period	$t_{RCIP}$	(9.62)	-	(11.76)	ns	
Receiver Skew Margin	$t_{SK}$	0	-	0.4	ns	$f_{IN} = 90\text{MHz}$
Input Data Position 1	$t_{RIP1}$	-tSK	0	+tSK	ns	
Input Data Position 0	$t_{RIP0}$	$t_{RCIP}/7 - t_{sk}$	$t_{RCIP}/7$	$t_{RCIP}/7 + t_{sk}$	ns	
Input Data Position 6	$t_{RIP6}$	$2(t_{RCIP}/7) - t_{sk}$	$2(t_{RCIP}/7)$	$2(t_{RCIP}/7) + t_{sk}$	ns	
Input Data Position 5	$t_{RIP5}$	$3(t_{RCIP}/7) - t_{sk}$	$3(t_{RCIP}/7)$	$3(t_{RCIP}/7) + t_{sk}$	ns	
Input Data Position 4	$t_{RIP4}$	$4(t_{RCIP}/7) - t_{sk}$	$4(t_{RCIP}/7)$	$4(t_{RCIP}/7) + t_{sk}$	ns	
Input Data Position 3	$t_{RIP3}$	$5(t_{RCIP}/7) - t_{sk}$	$5(t_{RCIP}/7)$	$5(t_{RCIP}/7) + t_{sk}$	ns	
Input Data Position 2	$t_{RIP2}$	$6(t_{RCIP}/7) - t_{sk}$	$6(t_{RCIP}/7)$	$6(t_{RCIP}/7) + t_{sk}$	ns	
Input Modulation Frequency	$f_{MOD}$	30	-	300	kHz	
Input Modulation Ratio	$r_{MOD}$	(-3.0)	-	(+3.0)	%	

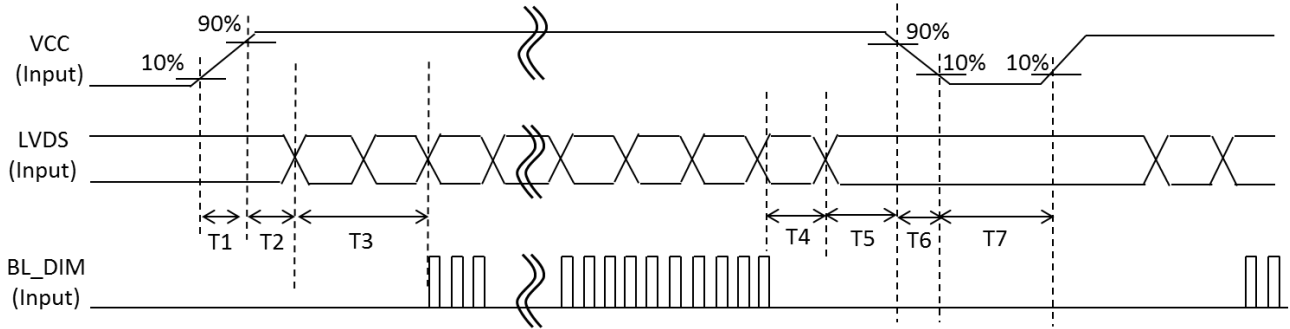


LVDS Receiver AC Characteristics Definition

(4) Power ON/OFF sequence

Ambient Temperature: Ta = 25°C

Sequence	Parameter	Symbol	Min.	Max.	Unit
Power ON	VCC rising time	T1	0.1	10	ms
	VCC 90% to signal	T2	0	--	ms
	signal to Backlight ON (T2<100ms)	T3	(100)	--	ms
Power OFF	Backlight OFF to signal stop	T4	0	--	ms
	signal stop to VCC fall	T5	(60)	--	ms
	VCC falling time	T6	0.1	10	ms
Restart	restart VCC time	T7	(400)	--	ms





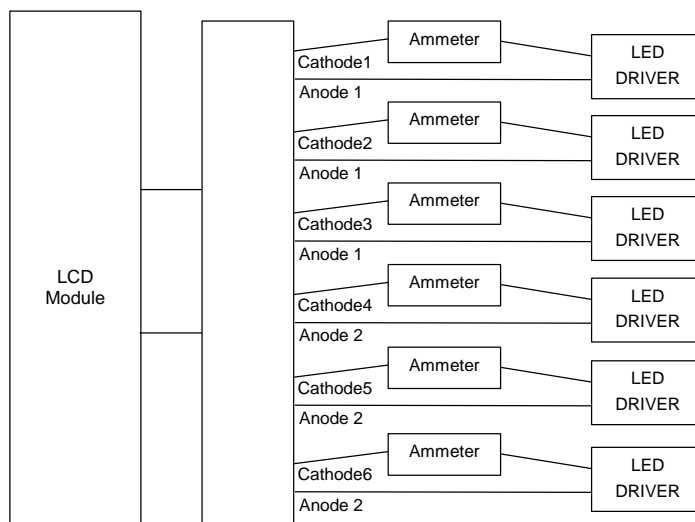
(5) Backlight

Ta= 25°C

Item	SYMBOL	MIN.	TYP.	MAX.	UNIT	REMARKS
LED Voltage	VF	--	(24.9)	(27.4)	V	IF=(95mA)
LED Current	IF	--	(95)	--	mA	*1), *2)
LED Life Time (Continuous)	LTc	25,000	30,000	--	h	*3), *4)
LED type	--	(8pcs x 6chains)			--	--
Thermistor type	--	NTC 10kΩ			--	position: near LED

[Note]

- \*1) Constant Current Driver
- \*2) LED Current measurement method



- \*3) LED life time is defined as the time when the LCD module brightness becomes 50% compared to the initial value under the measurement condition shown in page 18 and 19
- \*4) The life time of the backlight depends on the ambient temperature. The life time will decrease under high temperature.
- \*5) LED PWM frequency of driver may produce interference with horizontal synchronous frequency, and this may cause horizontal beat on the display. Therefore, please adjust LED PWM frequency, and keep driver as far from module as possible or use electronic shielding between driver and module to avoid the interference.

TBD

Fig.; De-rating curve

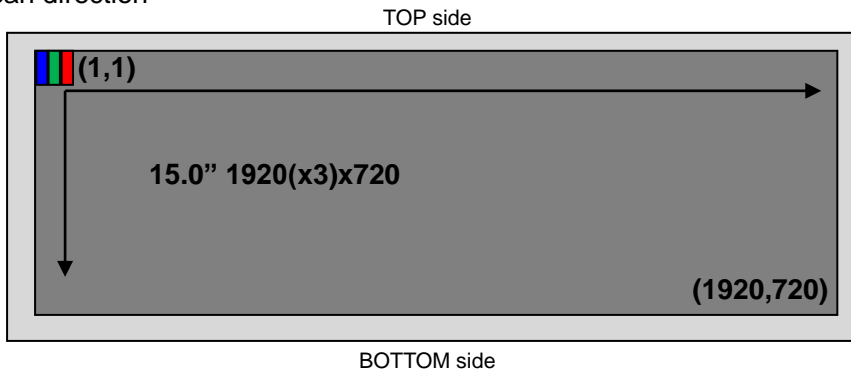
## 5. INTERFACE PIN CONNECTION

(1) Pin connection

CN1 (Signal and power interface) 60pin, pitch0.5mm, Connector type: 505110-6091(MOLEX)

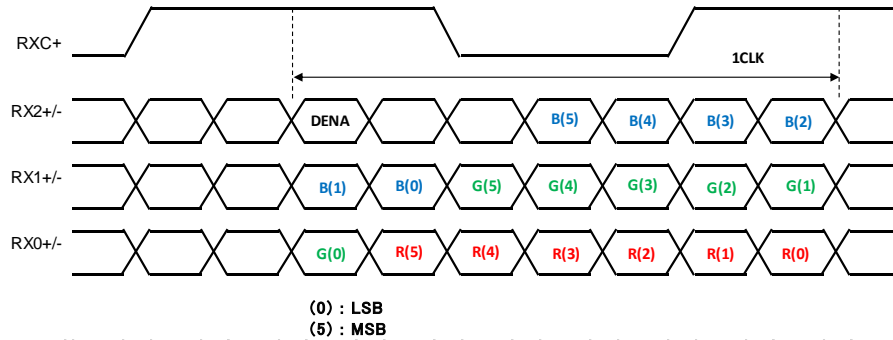
No.	Symbol	Description	No.	Symbol	Description
1	LOOP1	Loop back1 -> LOOP2 (*4)	31	RX3-	LVDS Data3 - (*2)
2	VCC	Power Supply (3.3V)	32	GND	Ground
3	VCC	Power Supply (3.3V)	33	RXC+	LVDS Clock+ (*2)
4	VCC	Power Supply (3.3V)	34	RXC-	LVDS Clock- (*2)
5	VCC	Power Supply (3.3V)	35	GND	Ground
6	NC	No connecting	36	RX2+	LVDS Data2 + (*2)
7	GND	Ground	37	RX2-	LVDS Data2 - (*2)
8	GND	Ground	38	GND	Ground
9	GND	Ground	39	RX1+	LVDS Data1 + (*2)
10	GND	Ground	40	RX1-	LVDS Data1 - (*2)
11	LVMD	Input : LVDS MAP (*2) (Low : JEIDA , High : VESA)	41	GND	Ground
12	SCAN	Input : Scan direction (*1) (Low : Normal , High : Reverse)	42	RX0+	LVDS Data0 + (*2)
13	FAIL	Output : Fail detect signal (*5) (Normal:High,Fail:Low)	43	RX0-	LVDS Data0 - (*2)
14	GND	Ground	44	I2C_SCL	I2C (Serial Clock) (*3) "Internal pull-High"
15	Reserved	Keep to VCC level	45	I2C_SDA	I2C (Serial Data) (*3) "Internal pull-High"
16	Reserved	Keep to VCC level	46	LOOP2	Loop back2 -> LOOP1 (*4)
17	GND	Ground	47	NTC1	Backlight temperature sensor pin 1 (*6)
18	Reserved	Keep to VCC level	48	NTC2	Backlight temperature sensor pin 2 (*6)
19	Reserved	Keep to VCC level	49	BL_C6	Backlight cathode 6
20	GND	Ground	50	BL_C5	Backlight cathode 5
21	Reserved	Keep to VCC level	51	BL_C4	Backlight cathode 4
22	Reserved	Keep to VCC level	52	BL_C3	Backlight cathode 3
23	GND	Ground	53	BL_C2	Backlight cathode 2
24	Reserved	Keep to VCC level	54	BL_C1	Backlight cathode 1
25	Reserved	Keep to VCC level	55	NC	No connecting
26	GND	Ground	56	NC	No connecting
27	Reserved	Keep to VCC level	57	NC	No connecting
28	Reserved	Keep to VCC level	58	NC	No connecting
29	GND	Ground	59	BL_A1	Backlight anode1 common (For cathode 1,2,3)
30	RX3+	LVDS Data3 + (*2)	60	BL_A2	Backlight anode2 common (For cathode 4,5,6)

\*1) LCD scan direction

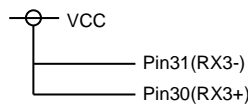


\*2) Data mapping

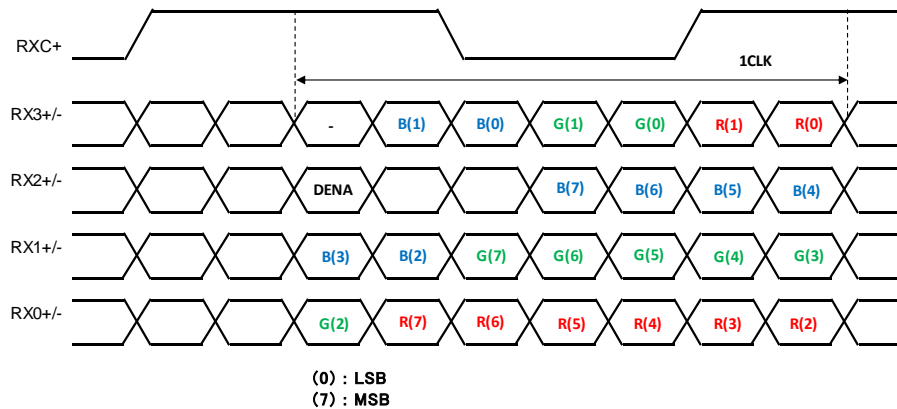
a. JEIDA mapping mode (LVMD = L ) (6bit input)



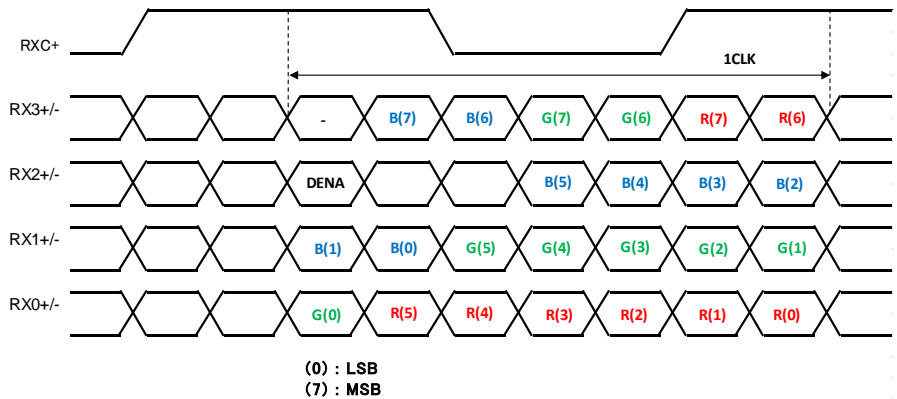
When LVMD is "L" and 6 bit input, the following connection is recommended.



b. JEIDA mapping mode (LVMD = L ) (8bit input)



c. VESA mapping mode (LVMD = H ) (8bit input)



\*3) I2C\_SCL/I2C\_SDA

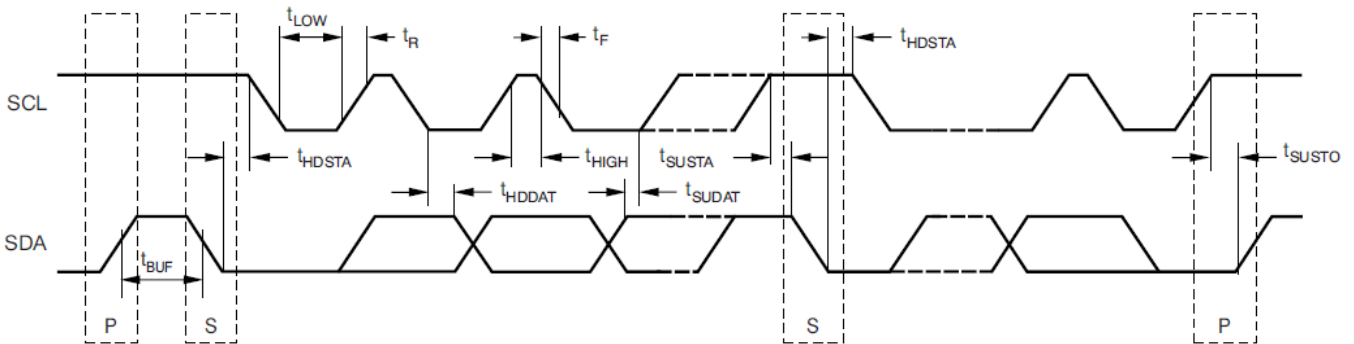
I2C line is connected to TCON(Timing controller) and PMIC(Power Management IC) with pull-up internal resistor;4.7kΩ on PCB. It is possible to contact the resistor of TCON via I2C. Please do not contact to PMIC.

(a)I2C device address

Parts	Slave address (binary)	Remark
TCON	1100_PPP	PPP: Page Address
PMIC(DCDC)	1000_000	
PMIC(VCOM cal)	1001_111	

(b)Interface I2C line electrical characteristics

Parameter	Symbol	Min	Typ	Max	Unit
Input voltage ' H ' level of logic	V <sub>IH</sub>	0.7V <sub>CC</sub>	-	V <sub>CC</sub>	V
Input voltage ' L ' level	V <sub>IL</sub>	GND	-	0.3V <sub>CC</sub>	V
High Level Output Voltage	V <sub>OH</sub>	V <sub>CC</sub> -0.4	-	V <sub>CC</sub>	V
Low Level Output Voltage	V <sub>OL</sub>	-	-	0.4	V
Pull Up Resistor	R <sub>UP</sub>	4.5	4.7	4.9	kΩ
SCL operating frequency	f <sub>SCL</sub>	10	-	225	kHz
Bus free time between START and STOP condition	t <sub>BUF</sub>	1200	-	-	ns
START condition hold time	t <sub>HDSTA</sub>	600	-	-	ns
START condition setup time	t <sub>SUSTA</sub>	600	-	-	ns
Stop condition setup time	t <sub>SUSTO</sub>	600	-	-	ns
Data hold time	t <sub>HDDAT</sub>	0	-	-	ns
Data setup time	t <sub>SUDAT</sub>	100	-	-	ns
SCL clock low period	t <sub>LOW</sub>	1200	-	-	ns
SCL clock high period	t <sub>HIGH</sub>	600	-	-	ns
Clock/data fall time	t <sub>F</sub>	-	-	300	ns
Clock/data rise time	t <sub>R</sub>	-	-	300	ns



\*4) LOOP1, LOOP2

The details are shown in section "7. FAILURE DETECTION". Please connect to GND when it is not used.

\*5) FAIL

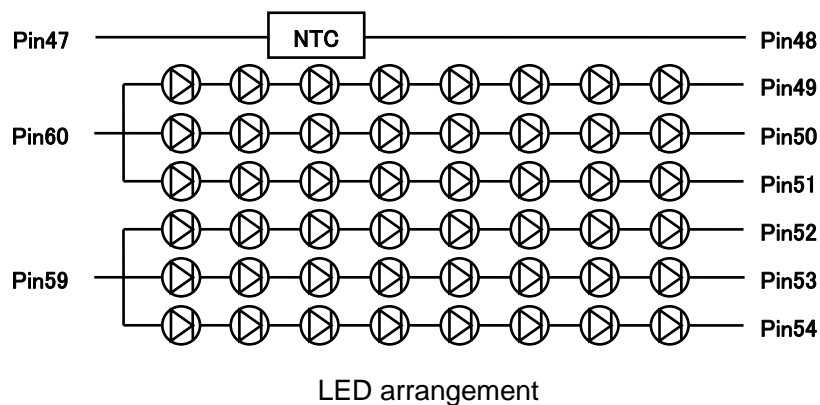
The details are shown in section "7. FAILURE DETECTION". Please keep open when it is not used.

\*6) NTC1, NTC2

**THERMISTOR CHARACTERISTICS (MITSUBISHI Material : TD05-3H103FR)**

Item	Specification	Condition
Resistance	10k ohm $\pm 1\%$	zero-power resistance at 25°C
B-constant	3370K $\pm 1\%$	B-value between 25 to 50°C
Maximum power dissipation	300mW	
Heat dissipation	2.4mW/°C	at 25°C
Operating temperature range	-40 ~ 150°C	
Rohs	Compliant	

Note: Placed in the edge of Backlight close to LED.



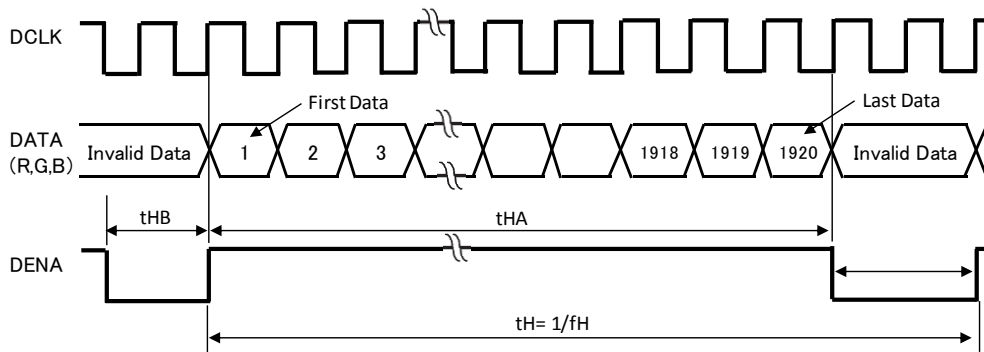
## 6. INTERFACE TIMING

### (1) Timing Specifications

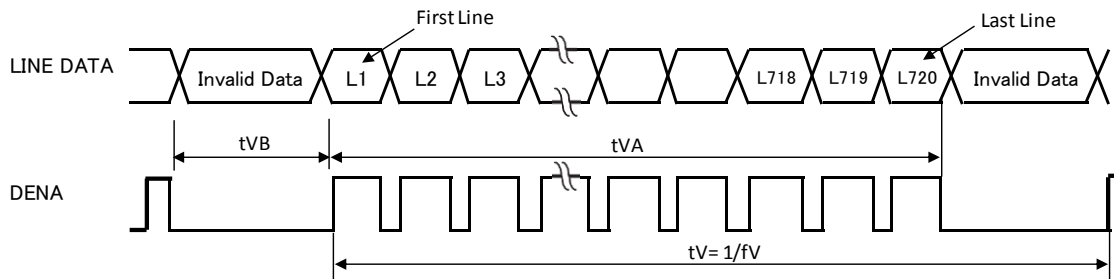
ITEM		SYMBOL	MIN.	TYP.	MAX.	UNIT
Data clock	Frequency	$f_{CLK}$	(85.0)	(87.065)	(104.00)	MHz
	Period	$t_{CLK}$	(9.62)	(11.49)	(11.76)	ns
Horizontal	Active time	$t_{HA}$	--	1920	--	tCLK
	Blanking time	$t_{HB}$	40	(76)	(800)	tCLK
	Frequency	$f_H$	(42.00)	(43.62)	(45.00)	kHz
Vertical	Active time	$t_{VA}$	--	720	--	tH
	Blanking time	$t_{VB}$	5	(7)	(180)	tH
	Frequency	$f_V$	50	60	62	Hz

### (2) Timing Chart

#### a. Horizontal Timing Chart



#### b. Vertical Timing Chart



## 7. FAILURE DETECTION

### (1)LOOP

LOOP1 and LOOP2 are connected in the LCD module through PCB and panel(PCB -> FPC -> Glass -> FPC -> PCB). This can be used for internal broken wire detection. The normal resistance ( $R_{LB}$ ) is shown in page 6.

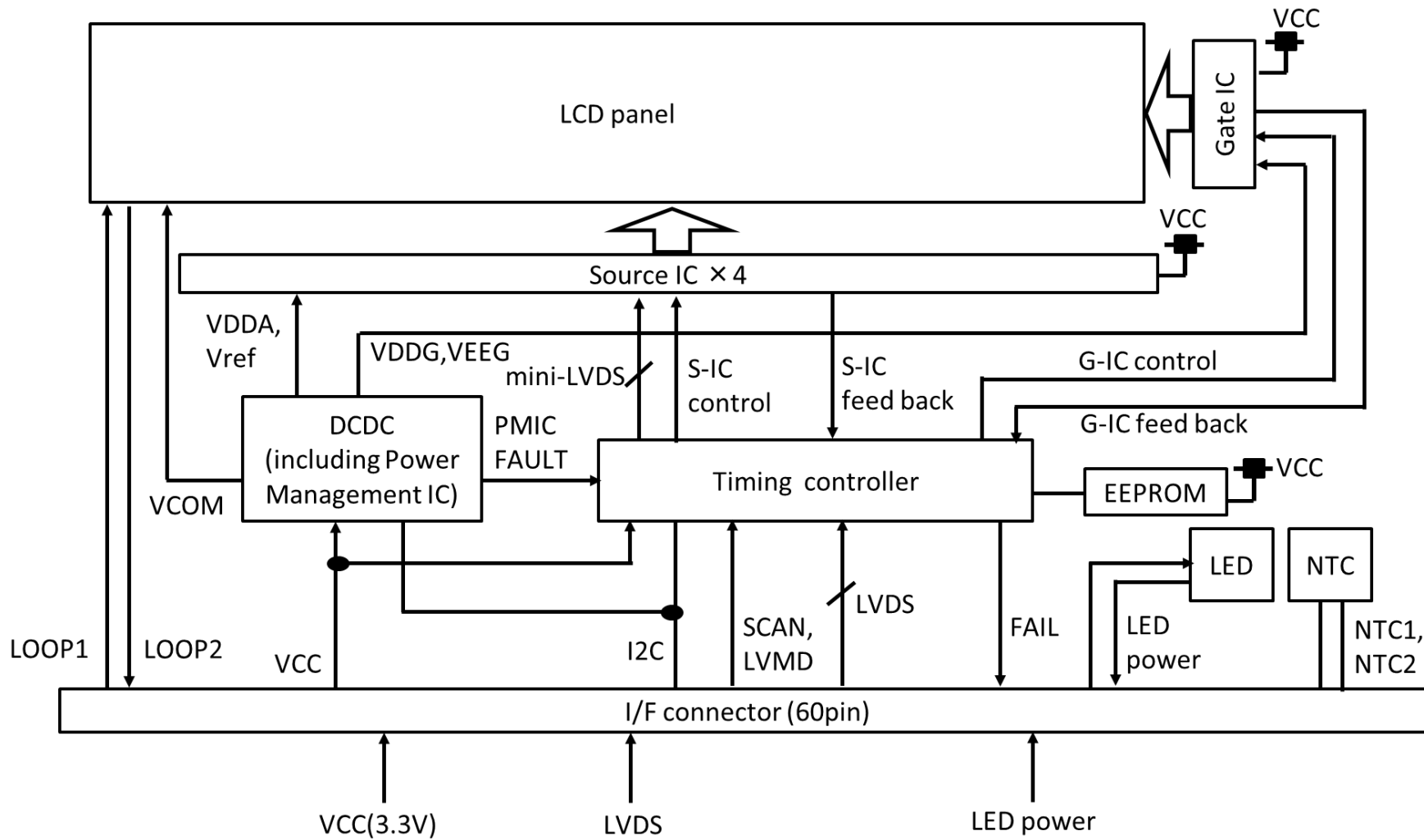
### (2)FAIL

FAIL signal at pin #13 of CN1 indicates following failures (Normal: High, Fail: Low).

The reason of failure (Fail category) can be checked from I2C access.

Fail Category	Description	Action
System Fail	LCD detects input LVDS clock and/or Sync signal is completely out of range. It will be caused by signal generator failure on system side or transmission line failure.	LCD indicates FAIL pin to be Low and draws Black image by itself.
CRC Fail	LCD calculates CRC of input data stream in specific area. The additional control via I2C is necessary to activate this function. (set CRC area, expected CRC etc.)	No action
EEPROM Fail	There is an EEPROM in LCD to configure the timing controller. The configuration data is periodically reloaded to avoid soft error. If an error is detected during loading, FAIL signal is asserted.	LCD indicates FAIL pin to be Low.
Gate Driver Fail	LCD detects gate feedback pulse to make sure the gate driver is correctly working. If an error is detected, FAIL signal is asserted.	LCD indicates FAIL pin to be Low.
Source Driver Fail	LCD detects source feedback pulse to make sure the source driver is correctly working. If an error is detected, FAIL signal is asserted.	LCD indicates FAIL pin to be Low.
miniLVDS Fail	"miniLVDS" is transmission line between internal timing controller and source drivers. The timing controller monitors failure of these line. If an error is detected, FAIL signal is asserted.	LCD indicates FAIL pin to be Low.
PMIC Fail	LCD monitors the internal voltage is correctly generated, input voltage drop and thermal shut down. If an error is detected, FAIL signal is asserted.	LCD indicates FAIL pin to be Low.

## 8. BLOCK DIAGRAM



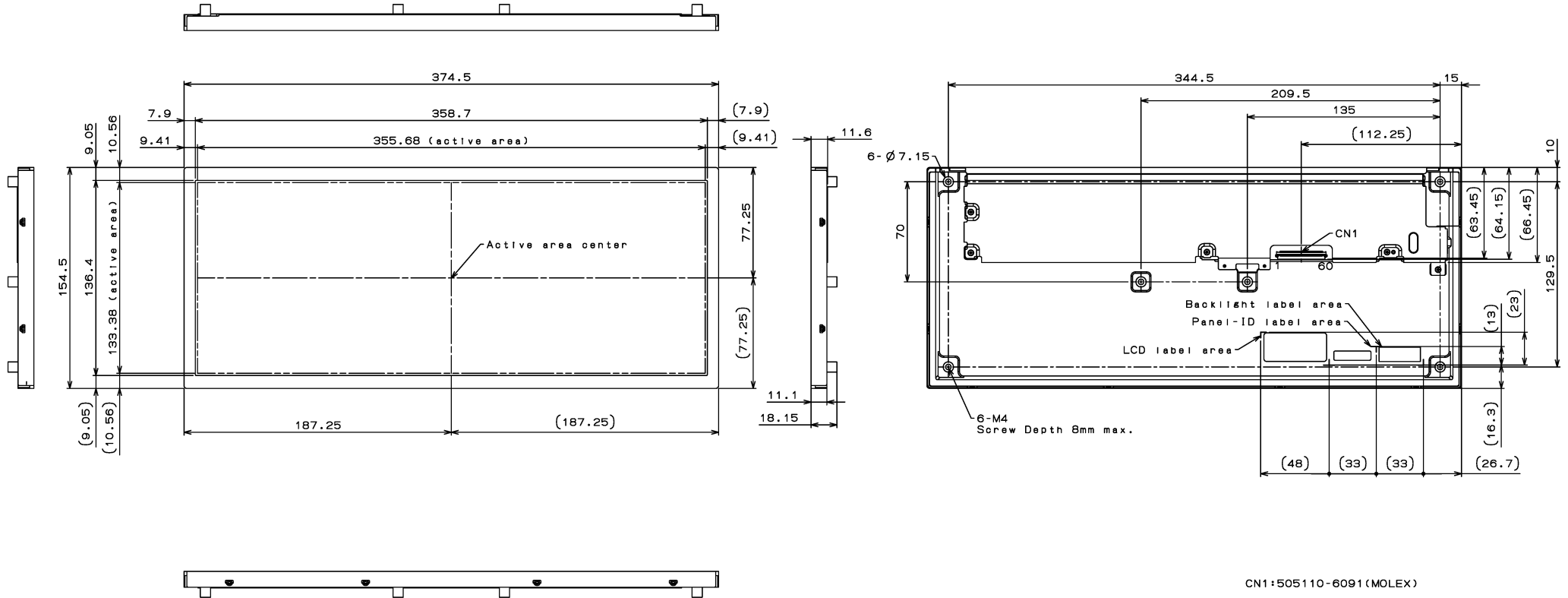


# 9. MECHANICAL SPECIFICATION

AA150AC01(for ES)

1)Tolerance is  $\pm 0.5\text{mm}$  unless noted.  
2)Third angle projection.

CONFIDENTIAL  
MITSUBISHI



CN1:505110-6091(MOLEX)

## 10. OPTICAL CHARACTERISTICS

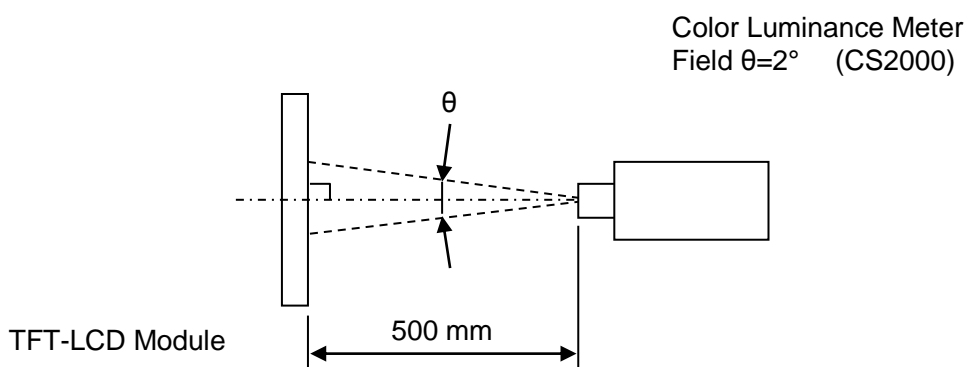
Ta= 25°C, VCC= 3.3 V, Input Signals: Typ. values shown in section\* If= 95mA

ITEM	SYMBOL	CONDITION	MIN.	TYP.	MAX.	UNIT	Remarks	
Contrast Ratio	CR	$\theta_V= 0^\circ, \theta_H= 0^\circ$	800	1000	--		*1)*2)*5)	
Luminance	Lw	$\theta_V= 0^\circ, \theta_H= 0^\circ$	800	1000	--	cd/m <sup>2</sup>	*1) *5)	
Luminance Uniformity	$\Delta Lw$	$\theta_V= 0^\circ, \theta_H= 0^\circ$	80	--	--	%	*1)*3)*5)	
Color Coordinate	Red	Rx	$\theta_V= 0^\circ, \theta_H= 0^\circ$	--	(0.640)	--	--	*1) *5) Gamut= 70%(typ.)
		Ry		--	(0.330)	--		
	Green	Gx		--	(0.300)	--		
		Gy		--	(0.600)	--		
	Blue	Bx		--	(0.150)	--		
		By		--	(0.060)	--		
	White	Wx		(0.283)	(0.313)	(0.343)		
		Wy		(0.299)	(0.329)	(0.359)		
Response time Ta=25° C	tr + tf	$\theta_V= 0^\circ, \theta_H= 0^\circ$	--	--	30	ms	*1)*4)*5)	
Viewing Angle range	Horizontal	$\theta_H$	CR $\geq 10$	-85~85	--	--	°	*1)*5)
	Vertical	$\theta_V$		-85~85	--	--		

[Note]

These items of transmissive mode are measured using EZ Contrast(ELDIM) for viewing angle and CS2000(KONICAMINOLTA) for others under the dark room condition (no ambient light) after more than 30 minutes from turning on the backlight unless noted.

Luminance and Viewing angle measurement method is as follows:

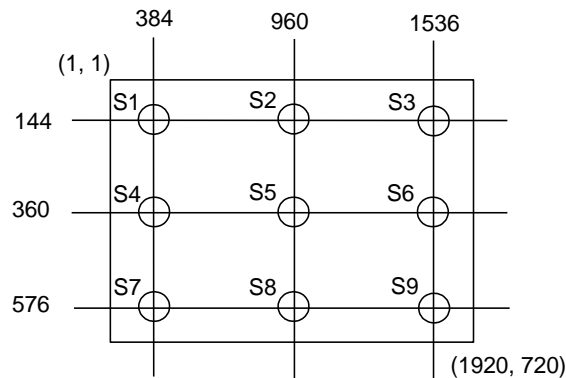


Each item's definition is as follows:

\*1) Measurement Point

Contrast Ratio, Luminance, Response Time, Viewing Angle, Color Coordinates, Brightness "Black", "White": Display center (S5)

Luminance Uniformity: point 1 ~9 shown in a figure below.



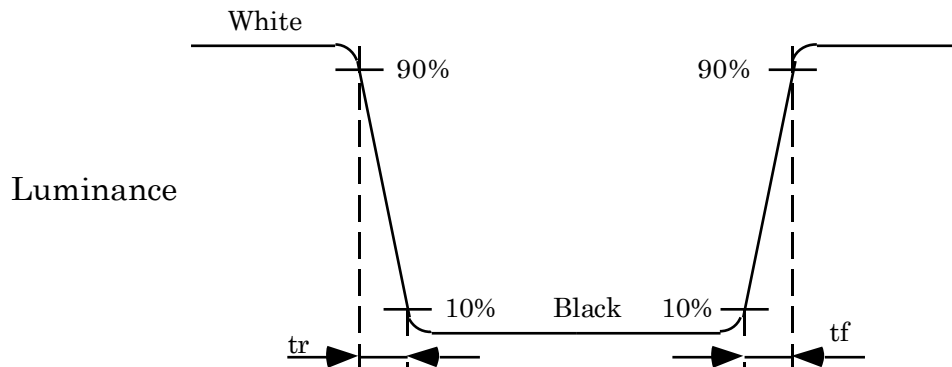
\*2) Definition of Contrast Ratio

$$CR = \text{Luminance with all white pixels} / \text{Luminance with all black pixels}$$

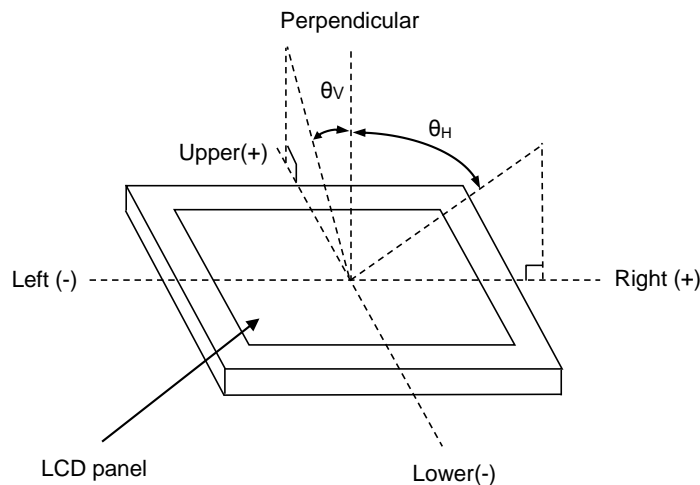
\*3) Definition of Luminance Uniformity White

$$\Delta Lw = [Lw(\text{MIN}) / Lw(\text{MAX})] \times 100, \text{ Lw is the luminance value at 9 points shown in *1).}$$

\*4) Definition of Response Time



\*5) Definition of Viewing angle ( $\theta_v$ ,  $\theta_H$ )



## 11. RELIABILITY TEST CONDITION

### (1) Temperature and humidity

TEST ITEM	CONDITION	JUDGEMENT STANDARD
High Temperature High Humidity Operation	60°C, 90%RH, 500h	No critical defect *1)
High Temperature Operation	85°C, 500h	
Low Temperature Operation	-40°C, 500h	
High Temperature Storage	90°C, 500h	
Low Temperature Storage	-40°C, 500h	
Thermal Shock (Non-Operation)	-40°C (0.5h) ~ 85°C (0.5h), 250 cycles	

### (2) Shock and vibration

TEST ITEM	CONDITION	JUDGEMENT STANDARD
Shock (Non-Operation)	1470m/s <sup>2</sup> 2msec, 1/2 sin wave, ±X, ±Y, ±Z, each axis	No critical defect *1)
	392m/s <sup>2</sup> 11msec, table wave, ±X, ±Y, ±Z, each axis	
Vibration (Non-Operation)	9.8m/s <sup>2</sup> (sine wave) 5~500Hz (0.5 octave /m) 3axis(X, Y, Z) each 1hour, total 3 hours	

### (3) ESD test

TEST ITEM	CONDITION	JUDGEMENT STANDARD
Contact Discharge	150pF, 330ohm, ±8kV	Recover display function after restart
Air Discharge	150pF, 330ohm, ±15kV	
Signal Pin Discharge	200pF, 0ohm, ±200V	

#### \*1) Judgment standard

The judgment of the above tests should be made as follow:

Pass: Normal display image, no damage of the display function. (e.g. no line defect)

Partial transformation of the module parts should be ignored.

Fail: No display image, damage of the display function. (e.g. line defect)

## 12. HANDLING PRECAUTIONS FOR TFT- LCD MODULE

Please pay attention to the followings in handling TFT-LCD products;

### (1) ASSEMBLY PRECAUTION

- a. Please use the mounting hole on the module in installing and do not bending or wrenching LCD in assembling. And please do not drop, bend or twist LCD module in handling.
- b. Please design display housing in accordance with the following guide lines.
  - (i) Housing case must be designed carefully so as not to put stress on LCD and not to wrench module. If customer uses compression mounting, please evaluate housing case with LCD carefully to avoid image quality issue caused by mechanical stress.
  - (ii) Under high temperature environment, performance and life time of LED may heavily shorten. When you design with our LCD product, please consider radiating heat and ventilation for good heat management.
  - (iii) Keep sufficient clearance between LCD module back surface and housing when the LCD module is mounted. Approximately 1.0mm of the clearance in the design is recommended taking into account the tolerance of LCD module thickness and mounting structure height on the housing.
  - (iv) When some parts, such as, FPC cable and ferrite plate, are installed underneath the LCD module, still sufficient clearance is required, such as 0.5mm. This clearance is, especially, to be reconsidered when the additional parts are implemented for EMI countermeasure.
  - (v) Design the connector and plate position carefully so as not to give stress to FPC cable, or not to interface the LCD module by the connector.
  - (vi) Keep sufficient clearance between LCD module and the others parts, such as speaker so as not to interface the LCD module. Approximately 1.0mm of the clearance in the design is recommended.
  - (vii) To avoid local elevation/decrease of temperature, considering location of heating element, heat release, and thermal design should be done.
- c. Please do not push or scratch LCD panel surface with anything hard. And do not soil LCD panel surface by touching with bare hands. (Polarizer film, surface of LCD panel is easy to be flawed.)
- d. Please wipe off LCD panel surface with absorbent cotton or soft cloth in case of it being soiled.
- e. Please wipe off drops of adhesives like saliva and water on LCD panel surface immediately. They might damage to cause panel surface variation and color change.
- f. Please do not take a LCD module to pieces and reconstruct it. Resolving and reconstructing modules may cause them not to work well.
- g. Please do not touch metal frames with bare hands and soiled gloves. A color change of the metal frames can happen during a long preservation of soiled LCD modules.
- h. Please handle metal frame carefully because edge of metal frame is very sharp.
- i. Please connect the metal frame of LCD module to GND in order to minimize the effect of external noise and EMI.
- j. Be sure to connect the cables and the connectors correctly.

## **(2) OPERATING PRECAUTIONS**

- a. Please be sure to turn off the power supply before connecting and disconnecting signal input cable.
- b. Please do not change variable resistance settings in LCD module. They are adjusted to the most suitable value. If they are changed, it might happen LCD does not satisfy the characteristics specification.
- c. The interface signal speed is very high. Please pay attention to transmission line design and other high speed signal precautions to satisfy signal specification.
- d. A condensation might happen on the surface and inside of LCD module in case of sudden change of ambient temperature.
- e. Please pay attention not to display the same pattern for very long time. Image sticking might happen on LCD. Although image sticking may disappear as the operation time proceeds, screen saver function is recommended not to cause image sticking.
- f. Please obey the same safe instructions as ones being prepared for ordinary electronic products.

## **(3) PRECAUTIONS WITH ELECTROSTATICS**

- a. This LCD module use CMOS-IC on TFT-LCD panel, and so it is easy to be affected by electrostatics. Please be careful with electrostatics by the way of your body connecting to the ground and so on.
- b. Please remove protection film very slowly from the surface of LCD module to prevent from electrostatics occurrence.

## **(4) STORAGE PRECAUTIONS**

LCD should be stored in the room temperature environment with normal humidity. The LCD inventory should be processed by first-in first-out method.

## **(5) SAFETY PRECAUTIONS**

- a. When you waste damaged or unnecessary LCDs, it is recommended to crush LCDs into pieces and wash them off with solvents such as acetone and ethanol, which should later be burned.
- b. If any liquid leaks out of a damaged glass cell and comes in contact with the hands, wash off thoroughly with soap and water.
- c. Be sure to turn off the power supply when inserting or disconnecting the cable.
- d. LED driver should be designed carefully so as not to keep working in case of detecting over current or open circuit on the LED light.

## **(6) Others**

- a. A strong incident light into LCD panel may cause deterioration to polarizer film, color filter, and other materials, which will degrade the quality of display characteristics.
- b. Please pay attention to a panel side of LCD module not to contact with other materials in preserving it alone.
- c. For the packaging box handling, please see and obey with the packaging specification datasheet.

### 13. REVISION STATUS

Rev.	Description	Date	Prepared	Checked
				Approved
X1	First Revision	Nov.24,'17	M.Kawano	-- H. Aoki
X2	<p>1.APPLICATION Revised, P3</p> <p>3.ABSOLUTE MAXIMUM RATINGS Change SYMBOL name VIL/VIH→VI, P4 Delete ESD and note *1) related to ESD, P5 Renumbering note from *2)~*3) to *1)~*2), P5</p> <p>4.ELECTRICAL CHARACTERISTICS (1)TFT-LCD Correct temperature -40°C~85°C→25°C, P6 Update table of TFT-LCD, P6 [Update specified values] VIH Min; 0.7VCC→0.8xVCC, VIL Max; 0.3VCC→0.2xVCC</p> <p>(2)LVDS receiver DC characteristics Add Fig name: LVDS receiver DC characteristics, P6</p> <p>(3)LVDS receiver AC characteristics Update table of LVDS receiver AC characteristics and chart, P7 [Update specified values] LVDS Clock Frequency Min20→Min85, Max120→Max104 LVDS Clock Period Min8.33→Min9.62, Max50→Max11.76 [Delete item] Receiver Skew Margin:Fin=65MHz,Fin=110MHz DLL Stability Time</p> <p>(4)Power ON/OFF sequence Add Ambient temperature:Ta=25°C, P8 Update table of power ON/OFF sequence and chart, P8 [Change item name] VCC to signal →VCC 90% to signal</p> <p>(5)Backlight Change reference pages of measurement condition *3), P9</p> <p>5.INTERFACE PIN CONNECTION (1)Pin connection Update table of pin connection [Change function] No.11 NC→LVMD [Add note] No.47 and No.48</p> <p>*2)Data mapping Replace table to chart, P11</p> <p>*3)I2C_SCL/I2C_SDA Add specification of I2C functions and chart, P12</p> <p>*4)Loop1, Loop2 Update comments, P13</p> <p>*5)FAIL Update comments, P13</p> <p>*6)NTC1, NTC2 Add table of NTC characteristics and LED alignment, P13</p> <p>6.INTERFACE TIMING (1)Timing specification Update table of interface timing, P14 [Delete item] Horizontal Front porch, Pulse Width, Horizontal Back porch, Vertical Front porch, Pulse Width, Vertical Back porch,</p>	Mar.7,'18	M.Kawano	-- H. Aoki

	HD Period, VD period [Update specified values] fH Min;21.3→34.8, Typ; 22.8→43.8, Max; 28.6→47.1 7.FAILURE DETECTION Add new section of failure detection, P15 8.BLOCK DIAGRAM Replace block diagram, P16 9.MECHANICAL SPECIFICATION Update outline dimension(Update detaied shape), P17 11.RELIABILITY TEST CONDITION Update table of Temperature and humidity, P20 [Update Condition] Thermal Shock (Non-Operation): 500cycles→250cycles			
X3	5.INTERFACE PIN CONNECTION 2) Data mapping Change pin30 and pin31 connection when LVMD is "L" and 6 bit input, P11	June.19,'18	M.Kawano	--
				H. Aoki
X4	7. FAILURE DETECTION (2)FAIL Change Description of Source Driver Fail gate feedback pulse→source feedback pulse	Feb.12,'19	M.Kawano	--
				H. Aoki