

专注熔断器研发制造
Focus on Fuse Development And Production



熔断器选型手册 Product Selection Guide

通信行业、电力行业、电动汽车、轨道交通、光伏风能
充电桩设备、储能设备、等其他熔断器，保护用产品

浙江弗而兹电气科技有限公司
ZHEJIANG FUERZI(FRSI)ELECTRIC TECHNOLOGY CO.,LTD.



半导体器件保护用熔断器 Fast Fuse For Semiconductor Protection

概述 Overview

- ◎符合GB/T 13539.4、IEC60269-4和UL248-13标准；
- ◎额定电压：AC130V~2000V（690V IEC标准 700V UL标准、1250V IEC标准 1300V UL标准）
- ◎更高直流电压请与公司技术部门联系；
- ◎功能等级：aR，gR；
- ◎aR用于半导体器件短路故障系统保护，gR用于半导体器件短路系统保护以及提高线路上的电缆和导线系统保护；
- ◎额定分断能力：AC100kA
- ◎功耗及I²t数据可向技术部门索取；
- ◎重量及装箱数可向公司市场部索取。
- ◎It meets GB/T 13539.4, IEC 60269-4 and UL248-13 standards.
- ◎Rated voltage: AC130V~2000V (690V IEC Standard 700V UL Standard、1250V IEC Standard 1300V UL Standard)
- ◎For higher DC voltage, please contact the company's Technical Department.
- ◎Functional Level: aR, gR;
- ◎aR is used for short-circuit fault system protection of semiconductor devices, gR is used for short-circuit system protection of semiconductor devices and for improving cable and wire system protection on lines.
- ◎Rated breaking capacity: AC100kA
- ◎Power consumption and I²t data can be obtained from Technical Departments.
- ◎The weight and packing number can be obtained from the Marketing Department of the company.

工作环境 Working Environment

- ◎环境温度：环境温度不超过40℃，24h测得的平均值不超过35℃，一年内测得的平均低于该值；周围空气温度最低值为-5℃。
- ◎大气条件：空气是干净的，其相对湿度在最高温度为40℃时不超过50%。在较低温度下可以有较高的相对湿度。例如，在20℃时，相对湿度可达90%。由于温度变化发生在产品本体上的凝露情况必须采取措施。
- ◎污染等级：3级
- ◎安装条件：熔断器应安装在无显著摇动和冲击，无足以腐蚀金属和破坏绝缘得气体及导电尘埃的场所中。

注：当熔断器使用条件和规定不相符时，用户应与我公司协商。

- Ambient temperature: ambient temperature does not exceed 40°C and the average value measured in 24 hours does not exceed 35°C and the average value measured in one year is lower than that; the minimum ambient air temperature is - 5 °C.
 - Atmospheric Conditions: The air is clean, and its relative humidity does not exceed 50% at the highest temperature of 40°C. The relative humidity can be higher at lower temperatures. For example, the relative humidity can reach 90% at 20°C. Because the temperature change occurs in the condensation of the product body, measures must be taken.
 - Pollution Level: Level 3
 - Installation Conditions: Fuses shall be installed in places where there is no significant shaking and impact, and where there is no enough corrosion of metals and destruction of insulated gases and conductive dust.
- Note: Users should consult with our company when the fuse operating conditions and regulations do not meet requirements.

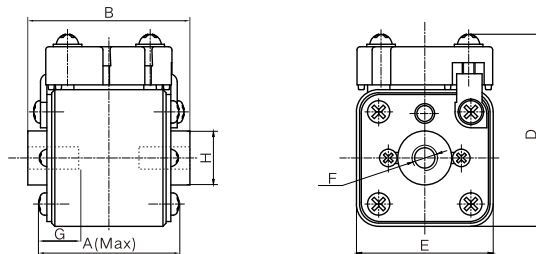
FRM P型系列平板式快速熔断器
FRM Series P-type Flat-plate Fast Fuse

分断能力 Breaking Capacity: AC=100kA 功能等级 Function Class: aR



型号 Model	尺码 Size	安装方式 Installation	额定电压(V) Rated voltage(V)	额定电流(A) Rated current(A)	尺寸Dimension(mm)						
					A	B	D	E	F	G	H
FRM	30	P51(K)	AC690/700 *550V	40~630	50	51	43(59)	43	M8	5	17
	31	P51(K)		200~800 900	50	51	50(69)	50	M8	8	20
	32	P51(K)	AC690/700 *600V	400~1250 1100~1250	50	51	60(77)	60	M10	10	24
	33	aP54(K)		500~1600	50	54	72(89)	72	M10	10	45
	33	P51(K)	AC690/700 *600V *550V	500~1600 1800 2000	50	51	75(92)	75	M12	12	40
FRM	34	P60(K)		1500~2500	53	60	85(97)	85	M12	10	54
	35	P60(K)	1600~3200	55	60	105(117)	105	M16	14	70	
	36	P60(K)	2300~3600	55	60	120(132)	120	M16	14	84	

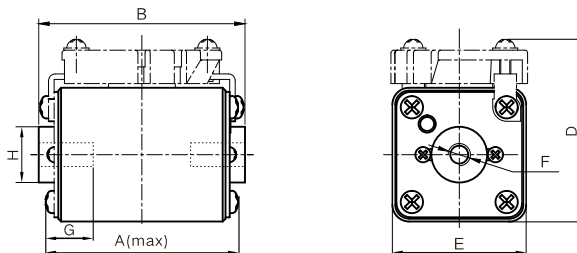
注: 当FRM32P51(K)电流为1100~1250A时, B=65mm; 当FRM33P51(K)电流为1600~2000A时, B=65mm
Note: when FRM32P51(K)'s current is 1100~1250A, B=65mm; when FRM33P51(K)'s current is 1600~2000A, B=65mm



分断能力 Breaking Capacity: AC=100kA 功能等级 Function Class: aR



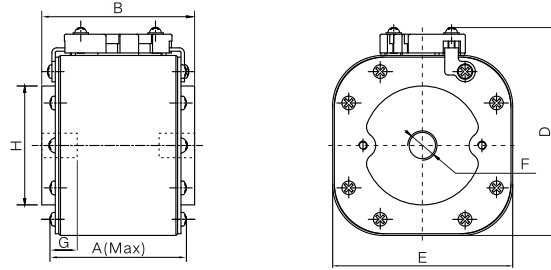
型号 Model	尺码 Size	安装方式 Installation	额定电压(V) Rated voltage(V)	额定电流(A) Rated current(A)	尺寸Dimension(mm)						
					A	B	D	E	F	G	H
FRM	60	P75(K)	AC1000	50~400	74	75	43(59)	43	M8	5	17
	61	P75(K)		160~630	74	75	50(69)	50	M8	8	20
	62	P75(K)		250~800	74	75	60(77)	60	M10	10	24
	63	aP78(K)		315~1250	74	78	72(89)	72	M10	10	45
	63	P75(K)		315~1400	74	75	75(92)	75	M12	10	40
FRM	60	P80(K)	AC1250/1300	50~400	80	81	43(59)	43	M8	5	17
	61	P80(K)		160~630	80	81	50(69)	50	M8	8	20
	62	P80(K)		250~800	80	81	60(77)	60	M10	10	24
	63	P80(K)		315~1400	80	81	75(92)	75	M12	10	40



分断能力 Breaking Capacity : AC=100kA 功能等级 Function Class : aR



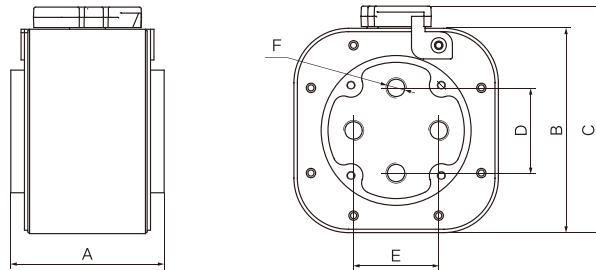
型号 Model	尺码 Size	安装方式 Installation	额定电压(V) Rated voltage(V)	额定电流(A) Rated current(A)	尺寸Dimension(mm)						
					A	B	D	E	F	G	H
FRM	62	P90(K)	AC1000	250~800	80	90	60(77)	60	M10	10	24
	63	P90(K)		315~1400	80	90	75(92)	75	M12	10	40
	64	P90(K)	AC1250/1300	1500~2500	84	90	85(97)	85	M12	10	54
	65	P90(K)		1600~3000	84	90	105(117)	105	M12	10	70
	66	P90(K)		2300~3600	84	90	120(132)	120	M16	14	84



分断能力 Breaking Capacity : AC=100kA 功能等级 Function Class : aR



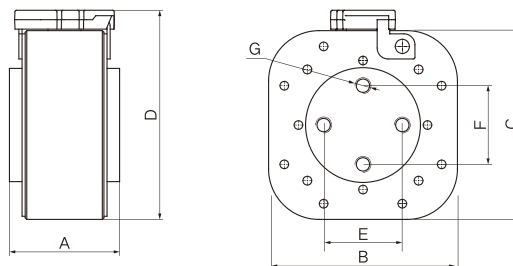
型号 Model	尺码 Size	安装方式 Installation	额定电压(V) Rated voltage(V)	额定电流(A) Rated current(A)	尺寸Dimension(mm)					
					A	B	C	D	E	F
FRM	36	P460K	AC500/690	2500~3900	60	120	134	50	50	4XM12
	66	P480K	AC800	2500~3900	80	120	134	50	50	4XM12
	66	P490K	AC1000	2500~3900	90	120	134	50	50	4XM12
	86	P4100K	AC1250	2500~3600	100	120	134	50	50	4XM12
	116	P4130K	AC1500	1800~3000	130	120	134	50	50	4XM12



分断能力 Breaking Capacity : AC=100kA 功能等级 Function Class : aR

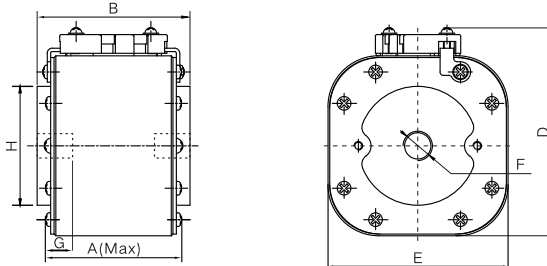


型号 Model	尺码 Size	安装方式 Installation	额定电压(V) Rated voltage(V)	额定电流(A) Rated current(A)	尺寸Dimension(mm)						
					A	B	C	D	E	F	G
FRM	65	P480K	AC800	1000~3200	80	105	105	125	33	33	4xM10
	65	P490K	AC1000	1250~2500	90	105	105	125	33	33	4xM10
	115	P4130K	AC1500	1250~2000	130	105	105	125	33	33	4xM10



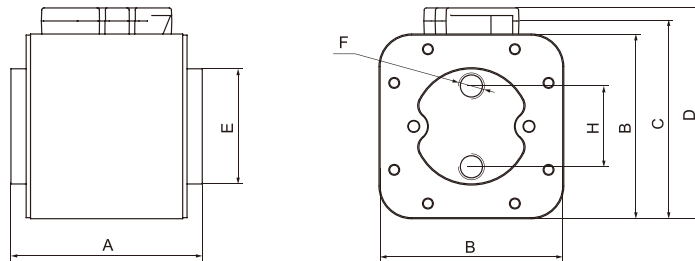
分断能力 Breaking Capacity: AC=100kA 功能等级 Function Class: aR

型号 Model	尺码 Size	安装方式 Installation	额定电压(V) Rated voltage(V)	额定电流(A) Rated current(A)	尺寸Dimension(mm)						
					A	B	D	E	F	G	H
FRM	86	P100(K)	AC1000 AC1250/1300	2300~3200	94	100	120(132)	120	M16	14	84



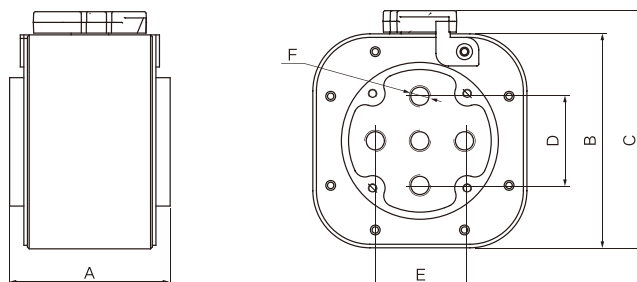
分断能力 Breaking Capacity: AC=100kA 功能等级 Function Class: aR

型号 Model	尺码 Size	安装方式 Installation	额定电压(V) Rated voltage(V)	额定电流(A) Rated current(A)	尺寸Dimension(mm)						
					A	B	C	D	E	F	H
FRM	33	aP256K	AC690/700	250~2000	56	72	88	112	46	2xM8	30
	35	P263K		1600~3000	63	105	117	142	70	2xM12	40
FRM	63	aP278K	AC1000V AC1250/1300	630~1500	78	72	88	112	46	2xM8	30
	65	P280K	AC800/1000	1600~2500	80	105	117	142	70	2xM12	40
	65	P290K	AC1000 1250/1300	1250~2500	90	105	117	142	70	2xM12	40



分断能力 Breaking Capacity: AC=100kA 功能等级 Function Class: aR

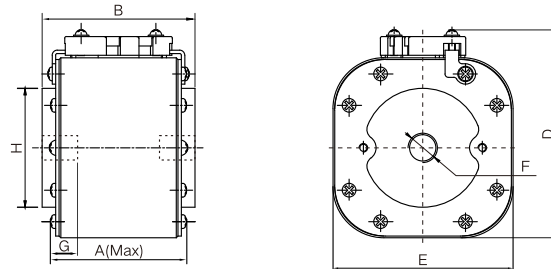
型号 Model	尺码 Size	安装方式 Installation	额定电压(V) Rated voltage(V)	额定电流(A) Rated current(A)	尺寸Dimension(mm)					
					A	B	C	D	E	F
FRM	37	P560K	AC500/690	4000~7000	60	152	164	62.5	62.5	5xM12
	37	P580K	AC800	4000~7000	80	152	164	62.5	62.5	5xM12
	37	P5100K	AC1000	4000~6000	100	152	164	62.5	62.5	5xM12
	37	P5100K	AC1250	3600~5500	100	152	164	62.5	62.5	5xM12
	37	P5130K	AC1500	3200~4200	130	152	164	62.5	62.5	5xM12



分断能力 Breaking Capacity: AC=100kA 功能等级 Function Class: aR



型号 Model	尺码 Size	安装方式 Installation	额定电压(V) Rated voltage(V)	额定电流(A) Rated current(A)	尺寸Dimension(mm)							
					A	B	D	E	F	G	H	
FRM	64	P80(K)	AC800	1250~2200	74	80	85(97)	85	M12	10	54	
	65	P80(K)		1600~2800	74	80	105(117)	105	M16	14	70	
	66	P80(K)	AC1000	2300~3600	74	80	120(132)	120	M16	14	84	

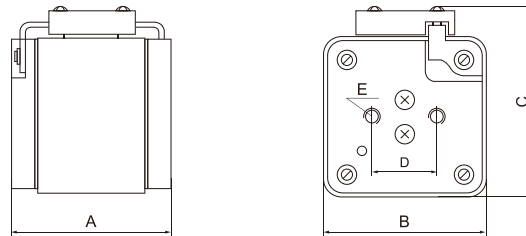


FRM FP型系列平板式快速熔断器 FRM Series FP-type Flat-plate Fast Fuse

分断能力 Breaking Capacity: AC=100kA 功能等级 Function Class: aR



型号 Model	尺码 Size	安装方式 Installation	额定电压(V) Rated voltage(V)	额定电流(A) Rated current(A)	尺寸Dimension(mm)				
					A	B	C	D	E
FRM	33	FP56K	AC690/700	1000~2000	56	75	90	30	2xM10
	63	FP80K	AC800	1000~1800	80	75	90	30	2xM10
	64	FP80K	AC1000	1500~2000	80	85	100	30	2xM10
	63	FP90K	AC1000	1000~1800	90	75	90	30	2xM10
	113	FP132K	AC1500/2000	350~900	132	75	90	30	2xM10

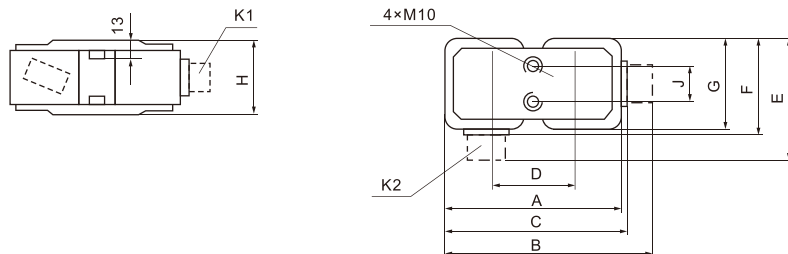


FRM SP型系列平板式快速熔断器 FRM Series SP-type Flat-plate Fast Fuse

分断能力 Breaking Capacity: AC=100kA 功能等级 Function Class: aR

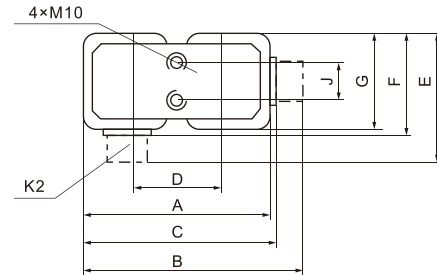
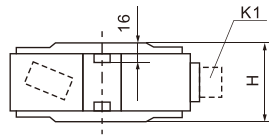


型号 Model	尺码 Size	安装方式 Installation	额定电压(V) Rated voltage(V)	额定电流(A) Rated current(A)	尺寸Dimension(mm)								
					A	B	C	D	E	F	G	H	J
FRM	33	SP56K	AC690/700	2000~4000	166	203	178	105	111	86	75	56	40
	63	SP78K	AC800	1600~3600	166	203	178	105	111	86	75	72	40
	63	SP80K	AC1000	1600~3600	166	203	178	105	111	86	78	80	40
	113	SP130K	AC1500/2000	700~1800	166	203	178	105	111	86	75	130	40



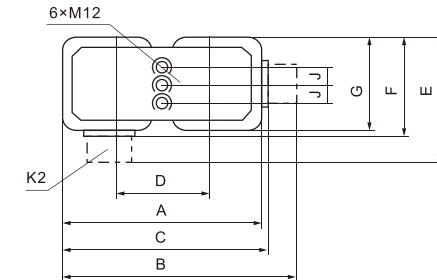
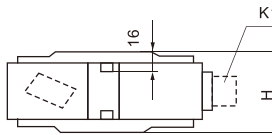
分断能力 Breaking Capacity: AC=100kA 功能等级 Function Class: aR

型号 Model	尺码 Size	安装方式 Installation	额定电压(V) Rated voltage(V)	额定电流(A) Rated current(A)	尺寸Dimension(mm)									
					A	B	C	D	E	F	G	H	J	
FRM	34	SP60K	AC500	2800~4800	195	232	207	105	122	97	85	60	40	
	64	SP80K	AC690/700 AC800/1000	2800~3600	195	232	207	105	122	97	85	80	40	



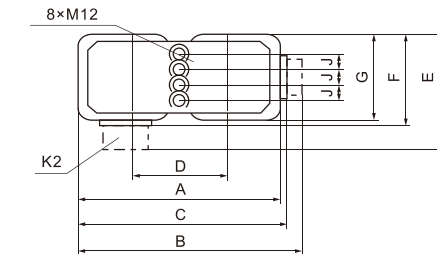
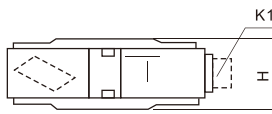
分断能力 Breaking Capacity: AC=100kA 功能等级 Function Class: aR

型号 Model	尺码 Size	安装方式 Installation	额定电压(V) Rated voltage(V)	额定电流(A) Rated current(A)	尺寸Dimension(mm)									
					A	B	C	D	E	F	G	H	J	
FRM	35	SP60K	AC690	3600~6000	232	269	244	110	142	117	105	60	31	
	65	SP80K	AC800/1000	2500~5000	232	269	244	110	142	117	105	80	31	



分断能力 Breaking Capacity: AC=100kA 功能等级 Function Class: aR

型号 Model	尺码 Size	安装方式 Installation	额定电压(V) Rated voltage(V)	额定电流(A) Rated current(A)	尺寸Dimension(mm)									
					A	B	C	D	E	F	G	H	J	
FRM	36	SP60K	AC690/700	4600~7000	262	299	274	128	157	132	130	60	30	
	66	SP80K	800	4600~7000	262	299	274	128	157	132	130	80	30	
	66	SP90K	AC1000	4600~6400	262	299	274	128	157	132	130	90	30	

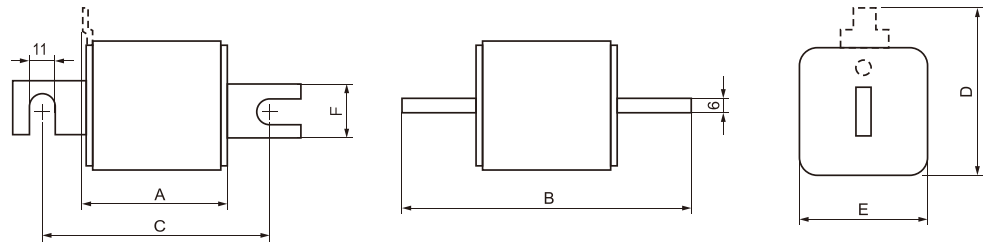


FRM UN型系列母线勾叉式快速熔断器 FRM Series UN Type Bus Cross-Slots Fast Fuse

分断能力 Breaking Capacity: AC=100kA 功能等级 Function Class: aR



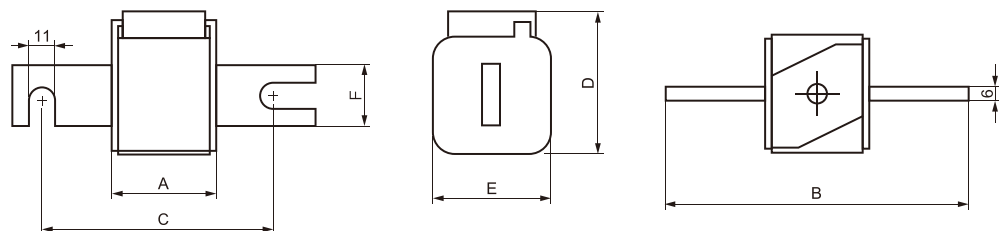
型号 Model	尺码 Size	安装方式 Installation	额定电压(V) Rated voltage(V)	额定电流(A) Rated current(A)	尺寸Dimension(mm)					
					A	B	C	D	E	F
FRM	30	UN80 (T)	AC690/700	40~630	50	104	78	43(58)	43	20
	31	UN80 (T)	AC690/700	200~800	50	108	78	50(66)	50	25
			*AC550	900						
	32	UN80 (T)	AC690/700	550~1000	50	108	78	60(75)	60	25
*AC600			1100~1250							
33	UN80 (T)	AC690/700	500~1600	50	109	78	75(90)	75	36	
		*AC600	1800							
		*AC550	2000							
FRM	30	UN110 (T)	AC690/700	40~630	50	134	108	43(58)	43	20
	31	UN110 (T)	AC690/700	200~800	50	138	108	50(66)	50	25
			*AC550	900						
	32	UN110 (T)	AC690/700	550~1000	50	138	108	60(75)	60	25
*AC600			1100~1250							
33	UN110 (T)	AC690/700	500~1600	50	139	108	75(90)	75	36	
		*AC600	1800							
		*AC550	2000							



分断能力 Breaking Capacity: AC=100kA 功能等级 Function Class: aR



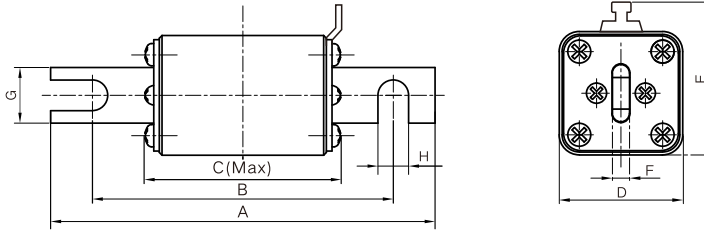
型号 Model	尺码 Size	安装方式 Installation	额定电压(V) Rated voltage(V)	额定电流(A) Rated current(A)	尺寸Dimension(mm)					
					A	B	C	D	E	F
FRM	30	UN80 (K)	AC690/700	40~630	50	104	78	58	43	20
	31	UN80 (K)	AC690/700	200~800	50	108	78	69	50	25
			*AC550	900						
	32	UN80 (K)	AC690/700	550~1000	50	108	78	77	60	25
*AC600			1100~1250							
33	UN80 (K)	AC690/700	500~1600	50	109	78	92	75	36	
		*AC600	1800							
		*AC550	2000							
FRM	30	UN110 (K)	AC690/700	40~630	50	134	108	59	43	20
	31	UN110 (K)	AC690/700	200~800	50	138	108	69	50	25
			*AC550	900						
	32	UN110 (K)	AC690/700	550~1000	50	138	108	77	60	25
*AC600			1100~1250							
33	UN110 (K)	AC690/700	500~1600	50	139	108	92	75	36	
		*AC600	1800							
		*AC550	2000							



分断能力 Breaking Capacity: AC=100kA 功能等级 Function Class: aR



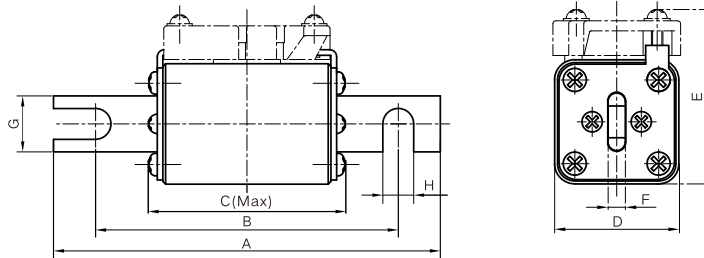
型号 Model	尺码 Size	安装方式 Installation	额定电压(V) Rated voltage(V)	额定电流(A) Rated current(A)	尺寸Dimension(mm)							
					A	B	C	D	E	F	G	H
FRM	60	UN110(T)	AC1000	50~400	138	108	75	43	61	6	20	11
	61	UN110(T)		160~630	138	108	75	50	66	6	25	11
	62	UN110(T)		250~800	138	108	75	60	71	6	25	11
	63	UN110(T)		315~1400	138	108	75	75	92	6	36	11



分断能力 Breaking Capacity: AC=100kA 功能等级 Function Class: aR



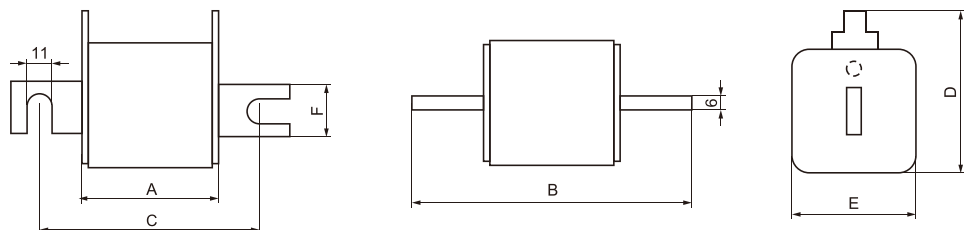
型号 Model	尺码 Size	安装方式 Installation	额定电压(V) Rated voltage(V)	额定电流(A) Rated current(A)	尺寸Dimension(mm)							
					A	B	C	D	E	F	G	H
FRM	60	UN110K	AC1000	50~400	138	108	75	43	61	6	20	11
	61	UN110K		160~630	138	108	75	50	69	6	25	11
	62	UN110K		250~800	138	108	75	60	77	6	25	11
	63	UN110K		315~1400	138	108	75	75	92	6	36	11



分断能力 Breaking Capacity: AC=100kA 功能等级 Function Class: aR



型号 Model	尺码 Size	安装方式 Installation	额定电压(V) Rated voltage(V)	额定电流(A) Rated current(A)	尺寸Dimension(mm)					
					A	B	C	D	E	F
FRM	61	UN110TT	AC1000	100~450	73	135	110	63	48	25
FRM	62	UN110TT	AC1000	400~630	73	149	110	72	58	25
			AC900	710						
			AC800	800						
			AC690	900						



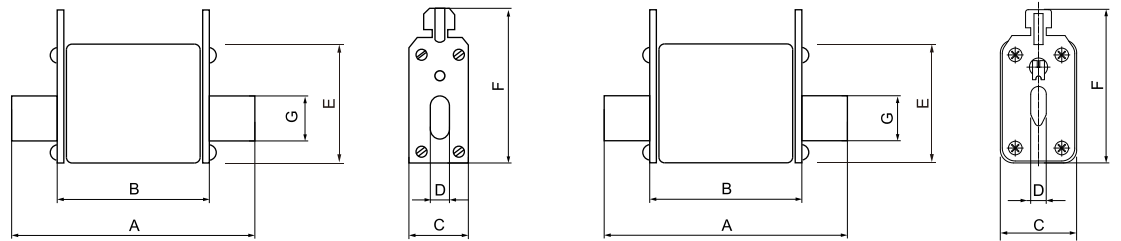
FRM Z型系列插入式刀型快速熔断器 FRM Series Z-type Knife-inserted Fast Fuse

分断能力 Breaking Capacity: AC=100kA 功能等级 Function Class: aR



型号 Model	尺码 Size	安装方式 Installation	额定电压(V) Rated voltage(V)	额定电流(A) Rated current(A)	尺寸Dimension(mm)							
					A	B	C	D	E	F	G	
FRM	000	Z78	AC690/700	10~160	78	54	21	6	40	53	15	
	00	Z78	AC690/700	20~200	78	54	30	6	48	61	15	
FRM	00	Z78	AC1000V	20~200								

注: FRM000-Z78 (NGTC000)、FRM00-Z78 (NGTC00)



FRM000-Z78 (NGTC000)

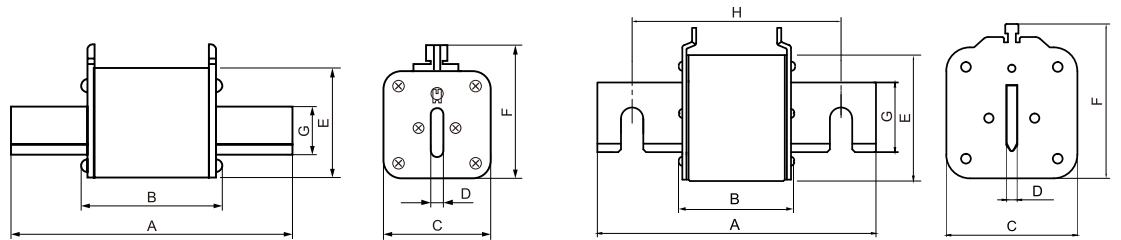
FRM00-Z78 (NGTC00)

分断能力 Breaking Capacity: AC=100kA 功能等级 Function Class: aR



型号 Model	尺码 Size	安装方式 Installation	额定电压(V) Rated voltage(V)	额定电流(A) Rated current(A)	尺寸Dimension(mm)							
					A	B	C	D	E	F	G	H
FRM	60	Z125	AC1000	10~224	125	68	30	6	48	61	15	-
	61	Z135		40~400	135	75	48	6	48	65	20	-
FRM	62	Z150	AC690/700	200~700	150	75	58	6	58	73	25	-
	63	Z150		500~900	150	75	68	6	68	86	32	-
				1000~1400	150	75	74	6	74	86	32	-
	65	Z200		630~2000	200	97	100	8	100	118	50	150

注: FRM60Z125(NGTC0)、FRM61Z135(NGTC1)、FRM62Z150(NGTC2)、FRM63Z150(NGTC3)、FRM65Z200(NGTC4)



FRM0Z125(NGTC0)~FRM63Z150(NGTC3)

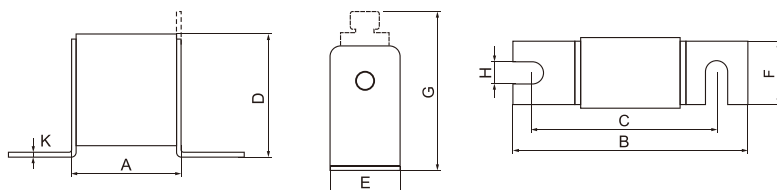
FRM65Z200(NGTC4)

FRM LUN型系列母线连接式快速熔断器 FRM Series LUN-type Bus-connection Fast Fuse

分断能力 Breaking Capacity: AC=100kA 功能等级 Function Class: aR



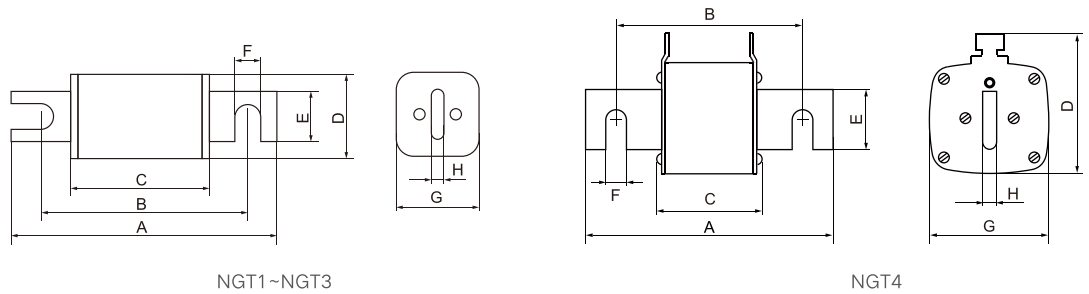
型号 Model	尺码 Size	安装方式 Installation	额定电压(V) Rated voltage(V)	额定电流(A) Rated current(A)	尺寸Dimension(mm)								
					A	B	C	D	E	F	G	H	K
FRM	000	LUN80(T)	AC690/700V	10~315	54	100	78	40	21	20	(51)	8	2
	00	LUN80(T)		25~400	54	100	78	51	30	28	(67)	10	2
FRM	00	LUN80(T)	AC1000V	20~315	54	100	78	51	30	28	(67)	10	2



分断能力 Breaking Capacity: AC=100kA 功能等级 Function Class: aR



型号 Model	额定电压(V) Rated voltage(V)	额定电流(A) Rated current(A)	尺寸Dimension(mm)							
			A	B	C	D	E	F	G	H
NGT1	AC 400/690	100~250	140	110	68	48	25	11	48	6
NGT2		200~400	140	110	68	58	25	11	58	6
NGT3		355~630	140	110	68	68	36	11	68	6
NGT4	AC690/700	630~2000	200	150	90	113	50	16.5	97	8
	AC1000	630~1600								



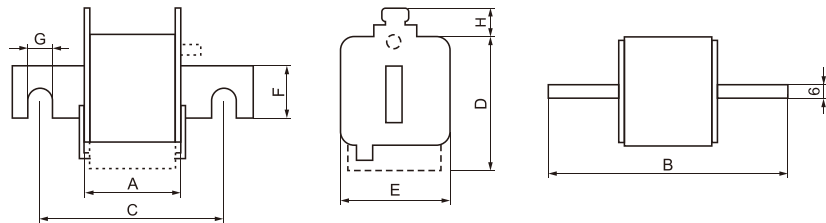
FRM MN型系列母线连接式快速熔断器

FRM Series MN-type Bus-connection Fast Fuse

分断能力 Breaking Capacity: AC=100kA 功能等级 Function Class: aR



型号 Model	尺码 Size	安装方式 Installation	额定电压(V) Rated voltage(V)	额定电流(A) Rated current(A)	尺寸Dimension(mm)							
					A	B	C	D	E	F	G	H
FRM	30	MN78TT	AC690/700 DC500V	40~500	50	102	76	59	43	20	9	13
	30	MN78K			50	102	76	59	43	20	9	13
FRM	31	MN86TT		200~800	50	111	86	69	50	25	11	11
	31	MN86K		200~800	50	111	86	69	50	25	11	11
FRM	32	MN90TT		400~1000	50	126	91	77	60	25	13	12
	32	MN90K		400~1000	50	126	91	77	60	25	13	12
FRM	33	MN90TT		500~1500	51	126	91	92	75	36	13	13
	33	MN90K		500~1500	51	126	91	92	75	36	13	13

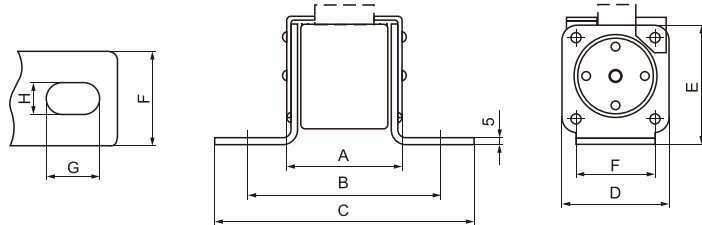


FRM LB型系列母线螺栓式快速熔断器 FRM Series LB-type Bus-bolted Fast Fuse

分断能力 Breaking Capacity: AC=100kA 功能等级 Function Class: aR



型号 Model	尺码 Size	安装方式 Installation	额定电压(V) Rated voltage(V)	额定电流(A) Rated current(A)	尺寸Dimension(mm)							
					A	B	C	D	E	F	G	H
FRM	32	LB104(K)	AC500/690	80~400	63	104	136	58	64	32	17	11
FRM	62	LB128(K)	AC800/1000	80~400	87	128	160	58	64	32	17	11
FRM	33	LB100(K)	AC500/690	400~800	63	99	139	72	77.5	50	20	13
FRM	63	LB124(K)	AC800/1000	400~800	87	123	163	72	77.5	50	20	13
FRM	34	LB113(K)	AC500/690	800~1250	67	113	153	85	90.5	60	20	16.5
FRM	64	LB133(K)	AC800/1000	800~1250	87	133	173	85	90.5	60	20	16.5

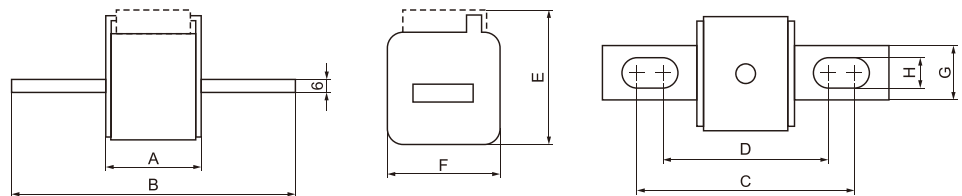


FRM MB型系列插刀母线式快速熔断器 FRM Series MB-type Bus-bolted Fast Fuse

分断能力 Breaking Capacity: AC=100kA 功能等级 Function Class: aR



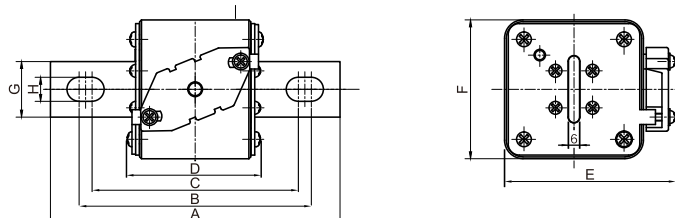
型号 Model	尺码 Size	安装方式 Installation	额定电压(V) Rated voltage(V)	额定电流(A) Rated current(A)	尺寸Dimension(mm)							
					A	B	C	D	E	F	G	H
FRM	30	MB78K	AC690/700	40~630	50	110	85	72	59	43	20	10
	31	MB90K		200~900	50	135	106	80	69	50	25	14
	32	MB90K		400~1250	50	135	105	81	77	60	25	14
	33	MB90K		500~2000	51	135	106	78	92	75	36	16
FRM	30	MB115K	AC690/700	40~630	50	148	123	110	59	43	20	10
	31	MB115K		200~900	50	157	126	100	69	50	25	14
	32	MB115K		400~1250	50	159	127	102	77	60	25	14
	33	MB115K		500~2000	51	155	129	101	92	75	36	16



分断能力 Breaking Capacity: AC=100kA 功能等级 Function Class: aR



型号 Model	尺码 Size	安装方式 Installation	额定电压(V) Rated voltage(V)	额定电流(A) Rated current(A)	尺寸Dimension(mm)								
					A	B	C	D	E	F	G	H	
FRM	60	MB115(K)	AC1000	50~400	156	130	101	73	59	43	20	10	
	61	MB115(K)		160~630	160	130	104	73	69	50	25	14	
	62	MB115(K)		AC1250/1300	250~800	160	130	104	73	77	60	25	14
	63	MB115(K)			500~1400	160	130	102	73	92	75	36	16

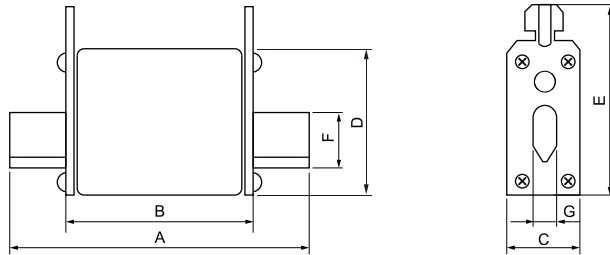


FRM系列Z型刀插双指示快速熔断器
FRM Double-indication Series Fuse For Semiconductor Protection

分断能力 Breaking Capacity: AC=100kA 功能等级 Function Class: aR



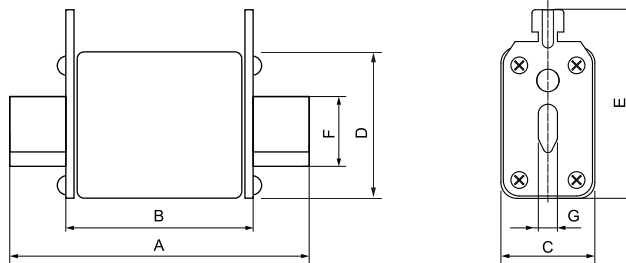
型号 Model	尺码 Size	安装方式 Installation	额定电压(V) Rated voltage(V)	额定电流(A) Rated current(A)	尺寸Dimension(mm)						
					A	B	C	D	E	F	G
FRM	000	Z78	AC690/700	10~250	78	54	21	40	53	15	6



分断能力 Breaking Capacity: AC=100kA 功能等级 Function Class: aR



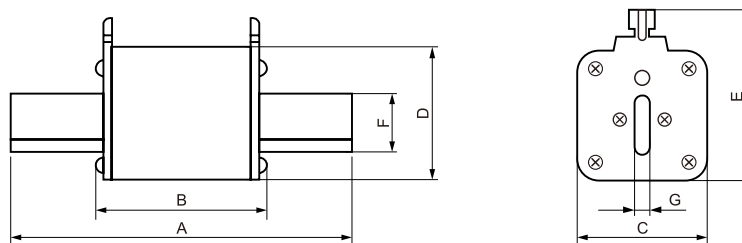
型号 Model	尺码 Size	安装方式 Installation	额定电压(V) Rated voltage(V)		额定电流(A) Rated current(A)		尺寸Dimension(mm)				
			A	B	C	D	E	F	G		
FRM	00	Z78	AC690/700	25~315	78	54	30	48	61	15	6
			AC1000V	25~225							



分断能力 Breaking Capacity: AC=100kA 功能等级 Function Class: aR



型号 Model	尺码 Size	安装方式 Installation	额定电压(V) Rated voltage(V)	额定电流(A) Rated current(A)		尺寸Dimension(mm)						
				A	B	C	D	E	F	G		
FRM	61	Z135	AC690/700	40~700		135	75	48	48	65	20	6
	62	Z150		400~1000		150	75	58	58	73	25	6
	63	Z150		500~1400		150	75	71	74	86	32	6

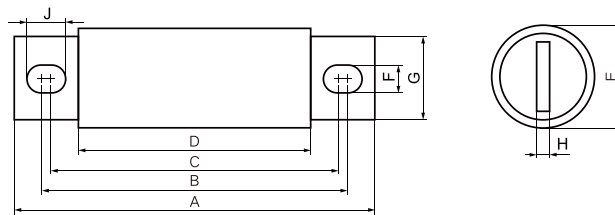


FRB系列MB型圆管螺栓式快速熔断器
FRB Series MB-type Round Tube Bolted Fast Fuse

分断能力 Breaking Capacity: AC=100kA 功能等级 Function Class: aR



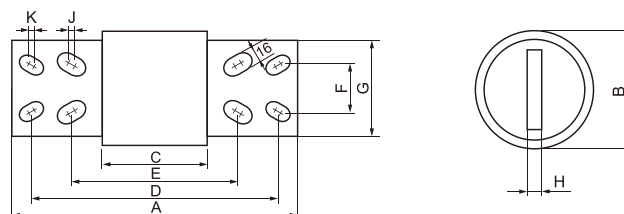
型号 Model	尺码 Size	安装方式 Installation	额定电压(V) Rated voltage(V)	额定电流(A) Rated current(A)	尺寸Dimension(mm)									
					A	B	C	D	E	F	G	H	J	
FRB	25	MB52	AC130/150	70~400	73	57	48	29	25	9	18	3.2	13.5	
	38	MB60		500~1000	89	65	55	32	38	10.5	26	6	19	
FRB	21	MB61	AC250	35~160	81	65	55	40	21	9	15	3.2	14	
	31	MB67		125~315	88	72	63	40	31	9	22	5	12.5	
	38	MB66		225~600	98	75	57	40	38	10.5	26	6	19	
	51	MB70		450~800	99	80	60	40	51	10.5	38	6	20	
FRB	21	MB61	AC500	35~160	81	65	55	40	21	9	15	3.2	14	
	25	MB68		70~225	88	72	63	44	25	9	18	3.2	13.5	
	31	MB70		125~300	91	75	66	47	31	9	22	5	12.5	
	38	MB80		225~500	111	88	70	53	38	10.5	26	6	19	
	51	MB88		450~700	112	93	73	53	51	10.5	38	6	20	
	63	MB107		700~1000	161	126	90	53	63	13.5	50	10	31	
FRB	21	MB90	AC600	35~100	111	95	85	70	21	9	15	3.2	14	
	25	MB93		70~160	114	98	89	70	25	9	18	3.2	13.5	
	31	MB98		110~250	118	101	94	74	31	9	18	5	12.5	
	38	MB99		125~400	132	108	91	74	38	10.5	26	6	19	
	51	MB106		225~600	135	116	96	76	51	10.5	38	6	20	
	63	MB120		450~900	158	141	99	78	63	13.5	50	10	21	
FRB	21	MB89	AC690/700	35~100	109	94	84	68	21	9	15	3.2	14	
	25	MB90		70~160	110	94	85	66	25	9	18	3.2	13.5	
	38	MB99		125~300	130	106	89	72	38	10.5	26	6	19	
	51	MB102		225~500	131	112	93	72	51	10.5	38	6	20	
	63	MB126		450~700	180	145	110	72	63	13.5	50	10	31	
	75	MB126		700~900	177	140	114	82	75	16	60	12	29	
FRB	25	MB102	AC1000	35~125	123	107	98	79	25	9	18	3.2	13.5	
	38	MB108		125~300	141	117	100	83	38	10.5	26	6	19	
	51	MB119		250~500	148	128	117	89	51	10.5	38	6	20	
	63	MB136		500~700	182	152	128	88	63	13.5	50	10	31	



分断能力 Breaking Capacity: AC=100kA 功能等级 Function Class: aR



型号 Model	尺码 Size	安装方式 Installation	额定电压(V) Rated voltage(V)	额定电流(A) Rated current(A)	尺寸Dimension(mm)									
					A	B	C	D	E	F	G	H	J	K
FRB	108	MB193	AC500;DC250	1400~1600	260	108	82	228	158	44	68	19	13	3
	108	MB209	AC700;DC500	900~1200	275	108	98	244	174	44	89	19	41	3

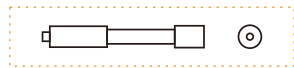
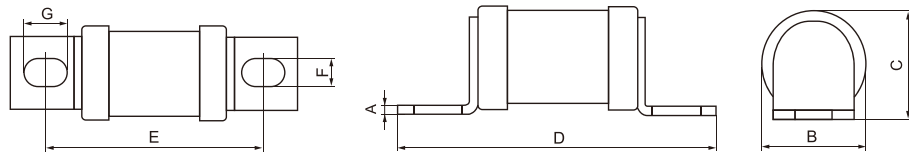


FRG系列凳子脚快速熔断器
FRG Series Stool-feet Fast Fuse

分断能力 Breaking Capacity: AC=100kA 功能等级 Function Class: aR



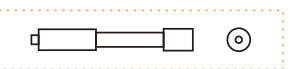
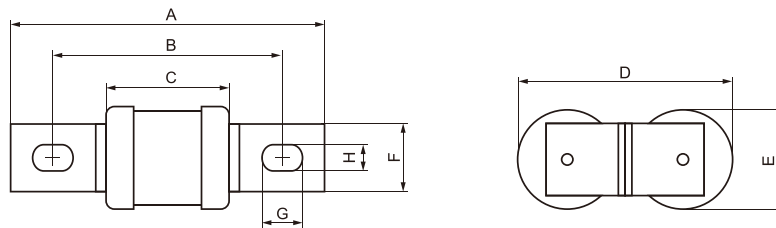
型号 Model	尺码 Size	安装方式 Installation	额定电压(V) Rated voltage(V)	额定电流(A) Rated current(A)	尺寸Dimension(mm)						
					A	B	C	D	E	F	G
FRG	18	LB42	AC230/300	20~180	2	18	19	56	42	6.5	9
	21	LB42		60~250	2.5	21.3	22	58	42	9	11
	27	LB58		90~300	3	26.8	28	80	58	9	11
	36	LB60		150~350	3	33	35	85	58	11	19
	48	LB65		315~550	3.5	47.5	51	90	65	11	16
FRG	18	LB64	AC690/700 AC1000	20~125	2	18.2	19	76	62	6.5	9
	21	LB70		60~160	2.5	21.3	22	90	70	9	11
	24	LB77		125~200	3	23	25.5	98	77	9	14
	27	LB70		90~225	3	26.8	28	90	70	9	11
	36	LB81		150~355	3	33	36	106	81	11	19
FRG	48	LB85	315~600	3.5	47.5	51	109	85	11	16	
FRG	38	LB85	180~350	3	38	44	113	85	11	19	



注：如有要求带信号(远程控制)请注明，并向销售部或技术部取得联系
Note: If you require signal (remote control), please specify and contact the Sales Department or Technical Department.

分断能力 Breaking Capacity: AC=100kA 功能等级 Function Class: aR

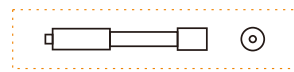
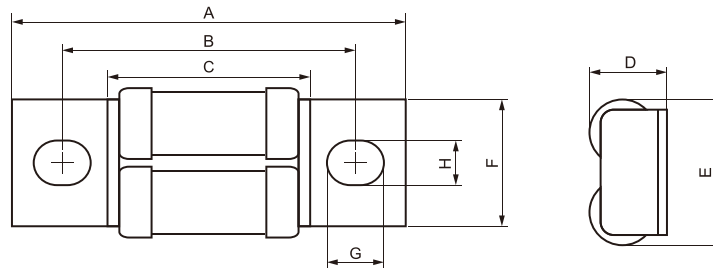
型号 Model	尺码 Size	安装方式 Installation	额定电压(V) Rated voltage(V)	额定电流(A) Rated current(A)	尺寸Dimension(mm)							
					A	B	C	D	E	F	G	H
FRG	36	SL59	AC230/300	400~700	84	59	31	72	33	25	16	10.3
	36	SL81	AC690/1000	400~710	106	81	60	72	33	25	16	10.3
	38	SL85	AC690/1000	400~710	113	85	60	80	38	25	16	10.3



注：如有要求带信号(远程控制)请注明，并向销售部或技术部取得联系
Note: If you require signal (remote control), please specify and contact the Sales Department or Technical Department.

分断能力 Breaking Capacity: AC=100kA 功能等级 Function Class: aR

型号 Model	尺码 Size	安装方式 Installation	额定电压(V) Rated voltage(V)	额定电流(A) Rated current(A)	尺寸Dimension(mm)							
					A	B	C	D	E	F	G	H
FRG	18	SL70	AC1000	100~225	94	71	46	20.5	36	32	12	8.7

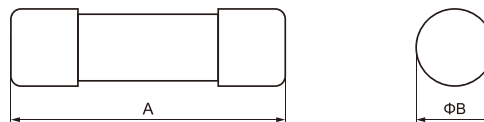


注: 如有要求带信号(远程控制)请注明, 并向销售部或技术部取得联系
 Note: If you require signal (remote control), please specify and contact the Sales Department or Technical Department.

FRC系列圆筒帽形快速熔断器 FRC Series Cylinder Cap Fast Fuse

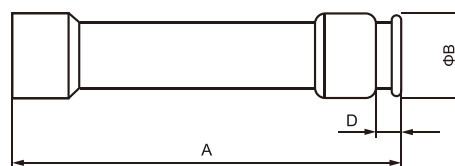
分断能力 Breaking Capacity: AC=100kA 功能等级 Function Class: aR

型号 Model	额定电压(V) Rated voltage(V)	额定电流(A) Rated current(A)	尺寸Dimension(mm)	
			A	B
FRC08	AC500 AC690/700	0.5~20	31.5	8.5
FRC10		1~50	38	10.3
FRC14		6~80	51	14.3
FRC21		10~63	58	21.0
FRC22		10~160	58	22.2
FRC27		32~125	60	27



分断能力 Breaking Capacity: AC=100kA 功能等级 Function Class: aR

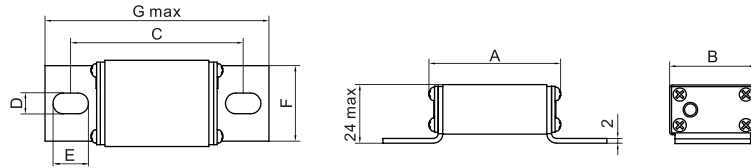
型号 Model	额定电压(V) Rated voltage(V)	额定电流(A) Rated current(A)	尺寸Dimension(mm)		
			A	B	C
FRC14H	AC500	6~80	51	14.3	5
FRC21H		10~63	76	20.5	5
FRC22H	AC690/700	10~160	58	22.2	5



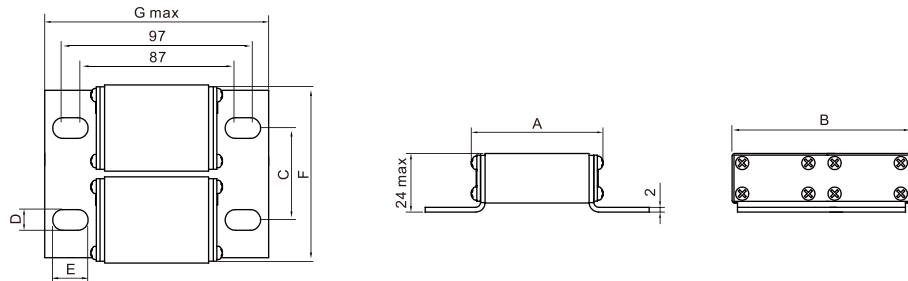
IGBT晶体管保护用快速熔断器/FRM系列LB型母线螺栓式
IGBT Series For Transistor Protection/FRM Series LB-type Bus-bolted Fast Fuse

分断能力 Breaking Capacity: AC=100kA 功能等级 Function Class: aR

型号 Model	尺码 Size	安装方式 Installation	额定电压(V) Rated voltage(V)	额定电流(A) Rated current(A)	尺寸Dimension(mm)						
					A	B	C	D	E	F	G
FRM	000	LB70	AC690/700	25~315	57	36.5	73	8.5	14	32	96
	230	LB70		250~630	73	78	40	8.8	14	74.1	115



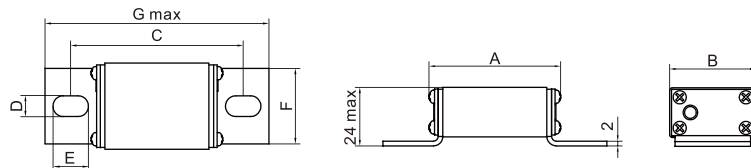
FRM000LB70



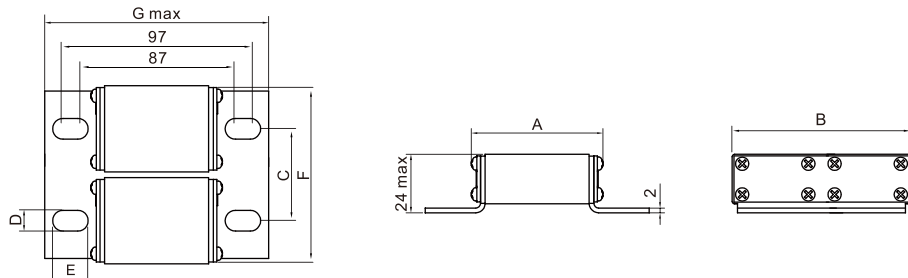
FRM230LB70

分断能力 Breaking Capacity: AC=100kA 功能等级 Function Class: aR

型号 Model	尺码 Size	安装方式 Installation	额定电压(V) Rated voltage(V)	额定电流(A) Rated current(A)	尺寸Dimension(mm)						
					A	B	C	D	E	F	G
FRM	000	LB90	AC1000V	25~250	75	36.5	91	8.5	14	32	113.5
	230	LB90		200~500	73	78	40	8.8	14	74.1	115



FRM000LB90



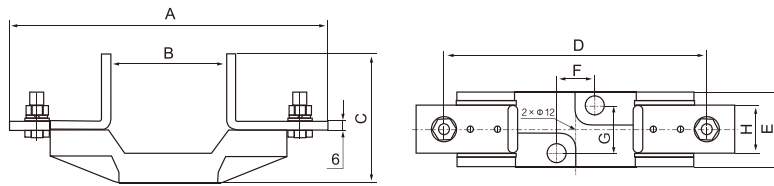
FRM230LB90

熔断信号器及快速熔断器底座 Fuse Signal And Fast Fuse Base

FH系列P型熔断器专用底座 FH Series P-type Specialized Fuse Base



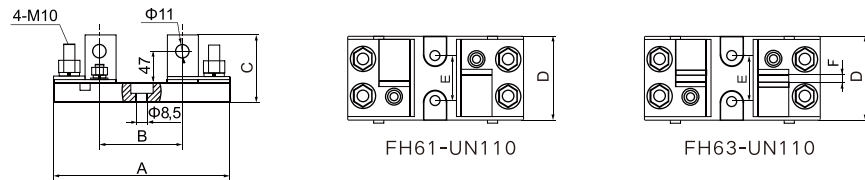
型号 Model	额定电压(V) Rated voltage(V)	额定电流(A) Rated current(A)	尺寸Dimension(mm)							
			A	B	C	D	E	F	G	H
FH31-P51	690/700V	630	211	51	99	175	49	25	30	32
FH33-P51	690/700V	2000	211	51	99	175	53	25	30	50
FH61-P75	1250/1300V	630	208	75	84	180	49	25	30	32
FH63-P75	1250/1300V	1400	208	75	84	180	53	25	30	50



FH系列UN型熔断器专用底座 FH Series UN-type Specialized Fuse Base



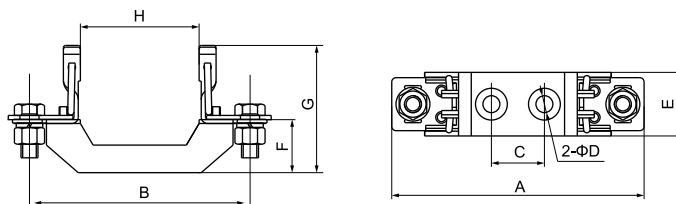
型号 Model	额定电压(V) Rated voltage(V)	额定电流(A) Rated current(A)	尺寸Dimension(mm)					
			A	B	C	D	E	F
FH61-UN110	1400V	630	205	110	80	85	60	-
FH31-UN80								-
FH63-UN110	1400V	2000	205	110	80	85	60	6
FH33-UN80								6



FH系列Z型熔断器专用底座 FH Series Z-type Specialized Fuse Base

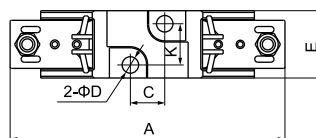
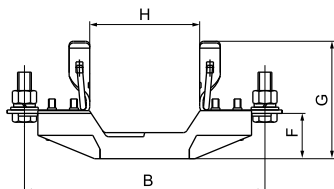


型号 Model	额定电压(V) Rated voltage(V)	额定电流(A) Rated current(A)	尺寸Dimension(mm)							
			A	B	C	D	E	F	G	H
FH00Z-160	690V	160	120	100	25	7.5	30	25	60	56
FH0Z-160	1000V	160	170	75	71	7.5	68	30	64	74

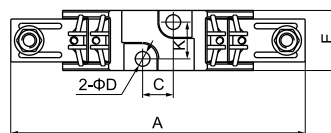
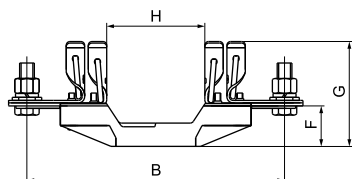


FH系列Z型熔断器专用底座
FH Series Z-type Specialized Fuse Base

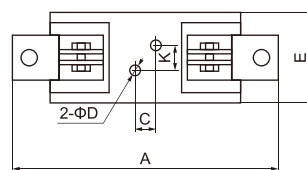
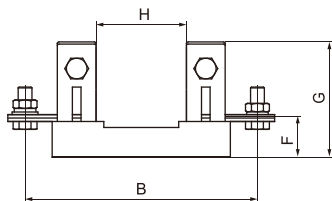
型号 Model	额定电压(V) Rated voltage(V)	额定电流(A) Rated current(A)	尺寸Dimension(mm)								
			A	B	C	D	E	F	G	H	K
FH1Z-250	690V~1000V	250	200	175	25	12	50	35	83	80	30
FH2Z-400		400	225	200	25	12	50	35	85	80	30



型号 Model	额定电压(V) Rated voltage(V)	额定电流(A) Rated current(A)	尺寸Dimension(mm)								
			A	B	C	D	E	F	G	H	K
FH3Z-630	690~1000V	630	240	210	25	12	50	35	88	80	30

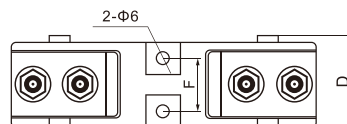
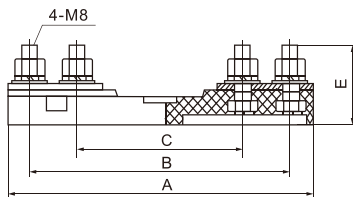


型号 Model	额定电压(V) Rated voltage(V)	额定电流(A) Rated current(A)	尺寸Dimension(mm)								
			A	B	C	D	E	F	G	H	K
FH4MN-1250	690~1000V	1250	310	270	45	10.5	88	50	134	105	30



FH系列LUN型熔断器专用底座
FH Series LUN-type Specialized Fuse Base

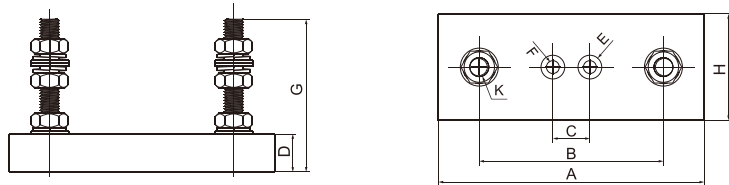
型号 Model	额定电压(V) Rated voltage(V)	额定电流(A) Rated current(A)	尺寸Dimension(mm)					
			A	B	C	D	E	F
FH20-LUN80	1000V	400	147	126	80	43	37.5	25



FH系列MB型快速熔断器专用底座 FH Series MB-type Specialized Fuse Base



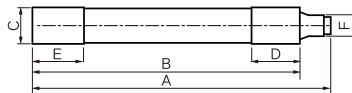
型号 Model	额定电压(V) Rated voltage(V)	额定电流(A) Rated current(A)	尺寸Dimension(mm)								
			A	B	C	D	E	F	G	H	K
FH18-MB64	1000V	100	80	64	20	15	9	5.5	40	18	6
FH25-MB52	500V	400	75	52	20	15	9	5.5	50	25	8
FH38-MB60	500V	1000	90	62	30	20	20	10.5	75	38	10
FH21-MB61	500V	160	82	62	20	15	9	5.5	50	21	8
FH25-MB72	500V	300	92	72	20	15	9	5.5	50	25	8
FH31-MB72	500V	400	90	72	30	20	9	10.5	60	31	8
FH38-MB80	500V	600	112	80	30	20	20	10.5	75	38	10
FH51-MB80	500V	800	112	80	30	20	20	10.5	80	51	10
FH21-MB91	750V	100	112	91	20	15	9	5.5	50	21	8
FH25-MB89	750V	160	115	89	20	15	9	5.5	50	25	8
FH38-MB99	750V	400	120	99	30	20	20	10.5	75	38	10
FH51-MB100	750V	600	135	100	30	20	20	10.5	80	51	10
FH25-MB107	1000V	100	125	107	20	15	9	5.5	50	25	8
FH38-MB108	1000V	300	142	102	30	20	20	10.5	75	38	10
FH51-MB119	1000V	400	150	119	30	20	20	10.5	80	51	10



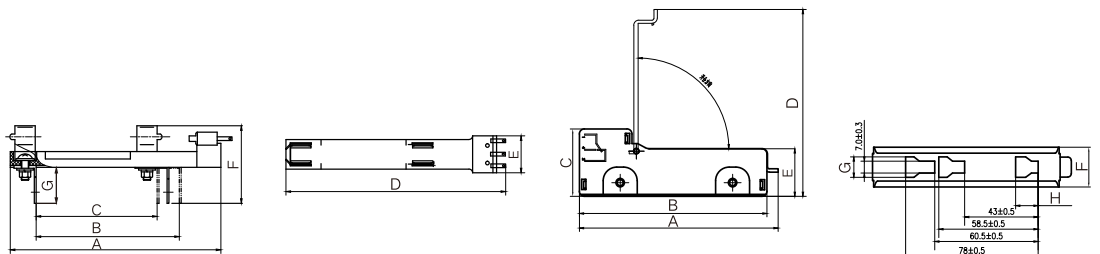
RX1/RX2熔断信号器 RX1/RX2 Fuse Signal Base



型号 Model	额定电压(V) Rated voltage	尺寸Dimension(mm)					
		A	B	C	D	E	F
RX1	1000	87±3	80±3	10.6±0.3	13±0.5	13±0.5	6
RX1D	1000	65±3	57±3	10.6±0.3	13±0.5	13±0.5	6



型号 Model	额定电压(V) Rated voltage	尺寸Dimension(mm)							
		A	B	C	D	E	F	G	H
RX1	1000	114±3	77.5	65.5	120±2	20±1.5	48±2	25	—
RX2	1000	118(Max)	110.5±0.5	39.5±0.5	120(Max)	28±0.5	23±0.5	12±0.3	13±0.5



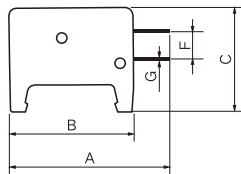
RX1 熔芯底座

RX2 熔芯底座

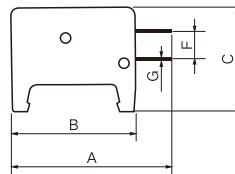
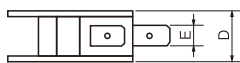
FRX6/FRX8 微动开关
FRX6/FRX8 microswitch



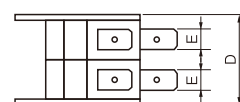
型号 Model	额定电压(V) Rated voltage	额定电流(A) Rated current	尺寸Dimension(mm)						
			A	B	C	D	E	F	G
FRX6	AC250	5	50	40	32	16	6.5	7	0.5
FRX26	AC250	5	50	40	32	30	6.5	7	0.5



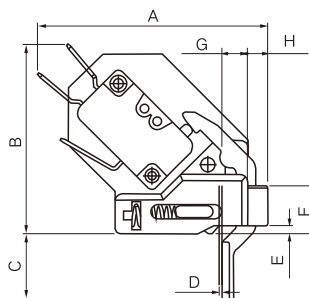
FRX6微动开关



FRX26双微动开关



型号 Model	额定电压(V) Rated voltage	额定电流(A) Rated current	尺寸Dimension(mm)							
			A	B	C	D	E	F	G	H
FRX8	AC250	5	57.5	47.5	16.35	0.6	2	12	6.5	5.1



本目录刊载的型号和规格会因产品更新而变化，恕不另行通知。
本目录中的产品外型、技术说明可能与实际有所不同，请以产品实物和使用说明书为准。
产品种类繁多，详情请咨询我公司或经销商。

Models and specifications in this catalog are subject to change without prior notice.
The product appearance and technical description in this catalogue may be different from the actual situation, please refer to the product and operation instruction.
There are many kinds of products, please consult our company or distributor for details.

FRZ[®] 弗而兹电气

地址：浙江省乐清市北白象镇东大街512号

电话：0577-6198 6868 传真：0577-6198 6869

官网：<http://www.frsidq.com> www.frsielectric.com

Address: NO.512 Dongda St., Beibaixiang, Yueqing, China

Tel: 0577-6198 6868 Fax: 0577-6198 6869

website: <http://www.frsidq.com> www.frsielectric.com



欢迎关注官方微信公众号