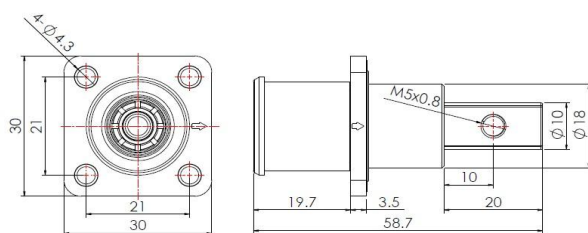


120A High current Receptacle-Screw interface-Copper basbar (Black)



Typecode PW06RB7RB01
ID 1010020000014

Technical Data

Connector

Contacts	Copper alloy silver-plated
Housing	Flame retardant reinforced plastic
Sealing	Silicone rubber
Flame retardant grade	UL94 V-0
Protection class	IP67
Connection mode	Copper busbar
Coupling screw of copper busbar	M5x0.8
Tightening torque of copper busbar	3.5 N·m ~ 4.0 N·m
Screw-in thread	M4
Tightening torque of flange	0.5 N·m ~ 0.7 N·m
Standard	UL4128
Pollution degree	III
Working temperature	-40 °C ~ +125 °C

Electrical performance

Rated withstand voltage	1000 V/DC
Rated current	120 A
Withstand voltage	DC 4250 V
Temperature rise	≤45 K
Insulation resistance	10000 MΩ(Room temperature)

Mechanical and chemical properties

Insertion force	≤50 N
Extraction force	≤10 N
Mechanical lifespan	≥100 Mating cycles

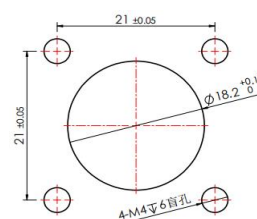
Commercial data

Weight	29 g
Packaging unit	1 pc
Country of origin	CN

Features

- 360° free rotation
- Protection against electric shock
- RoHS-compliant
- Anti misplug
- Push button unlocking
- UL4128-compliant

Recommended opening size



* Please note that the data specified here were design data, and the parameters of product are subject to changes without prior notice. Matters not mentioned herein. Please contact customer service. Please also note that the user is responsible for validating functionality, conformity with applicable laws and directives, as well as for the electrical safety in the particular application.