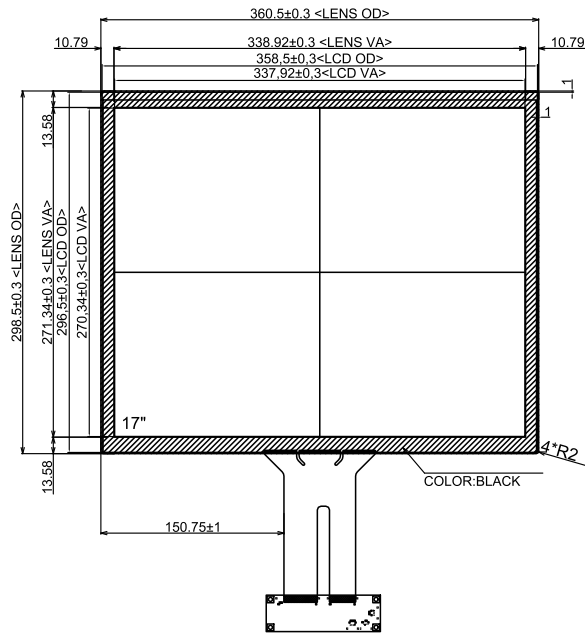
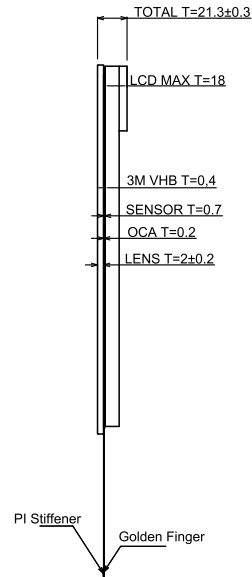


Ver.	modify NO.	Details	Area	P.I.C	Date

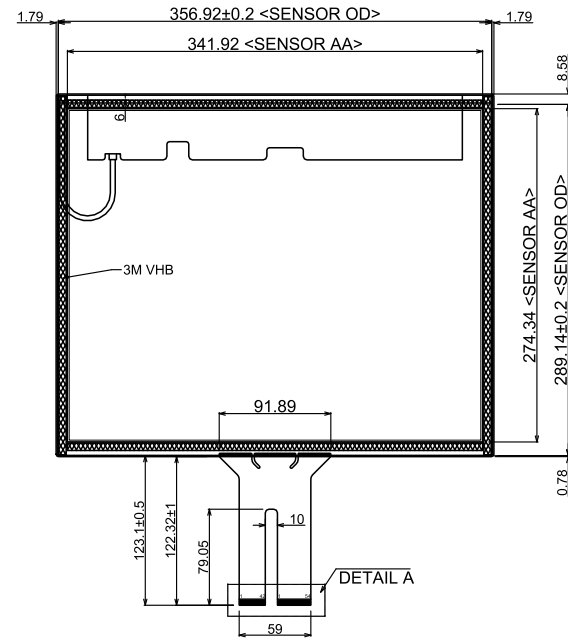
TOP VIEW



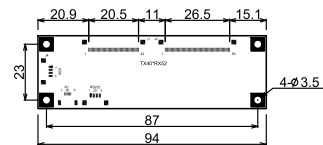
SIDE VIEW



BOTTOM VIEW



CONTROLLER SC 2:1

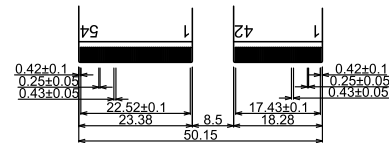


USB PIN ASSIGNMENT

1	VBUS
2	DN
3	DP
4	GND

Technical Datasheet:

1. Cover Glass: Tempered glass
2. Structure: TP+LCM Frame Bonding
3. LCD: G170ETN01.0
4. TP Controller IC: ILI2510
5. Surface Hardness: ≥6H
6. Light Transmittance: ≥85%
7. Unmarked Tolerance: ±0.5mm
8. All materials used conform to RoHS standards



DETAIL A SC 4:1

Channels: RX\*TX=50\*40

Part No.	SNT-TMS-17-ITO-R01		
Product Name: 17 inch Touch Display (TP+LCM Frame Bonding)	Drawing No.	T170I210531R01	
	Project Code.	T170R01	
Business Unit: SNT-BTP	Period Mark	View Angle	Ratio
	A		1:1
Workmanship:	Tina.Xin	BOM Code	2.13.170.01.1222
Standardization:	Link.Chen	Product Series	BTP-TPA
Released by:	Rocky.Liu	Page 1	Total 1 Page
E-File Name: T170I210531R01		思诺泰科电子(苏州)有限公司 SINOTECHNICS INC.	