



# SPECIFICATION

## 产品规格书

**Model:** BTP-LC-QMV01

<b>Approved by</b>		
Checked by 审核	Rechecked by 复审	Approved by 批准

Please send the original back to us after you have approved and signed. 客户承认  
签章后敬请寄回正本一份。

<b>Approved by customer</b>		
Comments 确认意见	Approved by 批准签字	Company's seal 盖章
Customer's Name:		



## REVISION HISTORY

VERSION	DATE	BOARD ID	PAGE	DESCRIPTION	AUTHOR
V0	2017.07.26	ME.BTP-LC-QMV01	All	First Issued.	Candy

www.sinotelectronics.com



● **Product Features:**

Part No.	BTP-LC-QMV01	
Panel Interface	Interface	
	EDP	4-Lane EDP /8-Lane EDP Support 3840*2160@60Hz
	V-BY-ONE	8-Lane V-BY-ONE Support 4096*2160@60Hz
Signal Input	Input Port	
	DP	Up To 4096*2160@60Hz Display Port1.2(5.4Ghz,HBR2)
	HDMI1	Up To 4096*2160@60Hz HDMI2.0版本 ( 6GHz ) MHL2.1(3GHz) HDCP (1.4)
	HDMI2	Up To 4096*2160@30Hz HDMI1.4 version ( 3GHz ) MHL2.1(3GHz) HDCP (1.4)
Audio Output	Max  Out Power	2×10W(8Ω) THD+N<10%@1KHz (Power Supply: 12V, Audio Input: 0.5VRMS)
	Frequency response	100Hz-15KHz@±dB(1KHz 0dB reference signal)
Power Supply	Working Voltage	12V/24V
	Driver Voltage	3.3V/5V/12V
	Power Mode	Support Low Consumption Model, Standby Mode
	Standby Consumption	<1W
OSD Language	English/Chinese	
OSD Key	POWER, MENU, +/-, AUTO/EXIT	

● **Interface Definition**

Serial	Port Definition
JP3	Power Input Port
JP1	External Power Input Port
JP7	Backlight Port
JP8	OSD and Indicator Port



JP5	Loudspeaker Output Port (Optional)
CNF1	V-BY-ONE / EDP

● JP3 Power Input Definition

Serial	Definition	Serial	Definition
1	+12V	3	GND
2	+12V	4	GND

● JP1 External Power Input Definition

Serial	Definition	Serial	Definition
1	STB	6	+5V
2	GND	7	GND
3	GND	8	GND
4	STB-5V	9	+12V
5	+5V	10	+12V

● JP7 Backlight Port Definition

Serial	Definition	Serial	Definition
1	GND	4	EN
2	GND	5	12V
3	ADL	6	12V

● JP8 OSD Key and Indicator Definition

Serial	Definition	Serial	Definition
1	POWER	6	DOWN



2	LED-R	7	SOURCE
3	LED-G	8	MENU
4	GND	9	LEFT
5	UP	10	RIGHT

● JP5 Loudspeaker Output Definition

Serial	Definition	Serial	Definition
1	L Out+	3	R Out-
2	L Out-	4	R Out+

● CNF1 V-BY-ONE Port Definition

Serial	Definition	Serial	Definition
1	GND	27	HTPDN
2	RX7P	28	8b_10b
3	RX7N	29	NC7
4	GND	30	NC6
5	RX6P	31	NC5
6	RX6N	32	NC4
7	GND	33	SCL
8	RX5P	34	SDA
9	RX5N	35	NC3
10	GND	36	NC2
11	RX4P	37	NC1



12	RX4N	38	GND
13	GND	39	GND
14	RX3P	40	GND
15	RX3N	41	GND
16	GND	42	GND
17	RX2P	43	NC
18	RX2N	44	VIN
19	GND	45	VIN
20	RX1P	46	VIN
21	RX1N	47	VIN
22	GND	48	VIN
23	RX0P	49	VIN
24	RX0N	50	VIN
25	GND	51	VIN
26	LOCKN		

● CNF1 EDP Port Definition

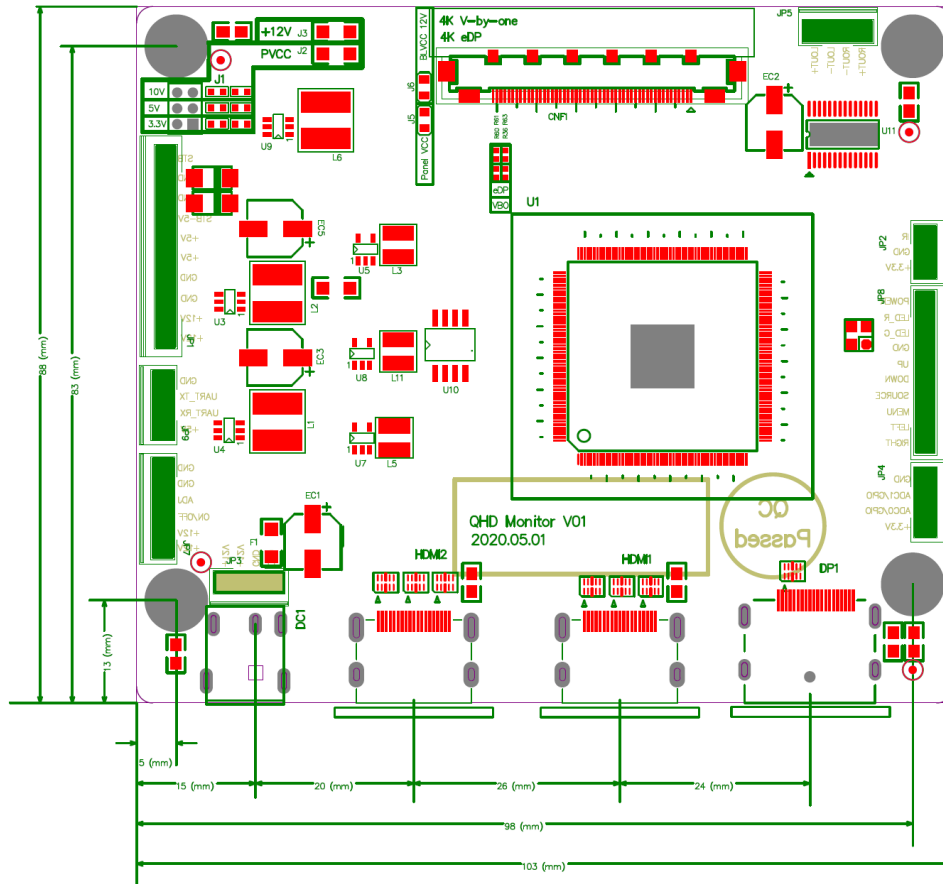
Serial	Definition	Serial	Definition
1	GND	27	DPTX_HPD
2	NC	28	NC
3	NC	29	NC
4	GND	30	NC
5	NC	31	NC



6	NC	32	NC
7	GND	33	GPIO
8	NC	34	NC
9	NC	35	NC
10	GND	36	DPTX_AUX_P
11	NC	37	DPTX_AUX_N
12	NC	38	GND
13	GND	39	GND
14	DPTX_LAN3_N	40	GND
15	DPTX_LAN3_P	41	GND
16	GND	42	GND
17	DPTX_LAN2_N	43	NC
18	DPTX_LAN2_P	44	VCC
19	GND	45	VCC
20	DPTX_LAN1_N	46	VCC
21	DPTX_LAN1_P	47	VCC
22	GND	48	VCC
23	DPTX_LAN0_N	49	VCC
24	DPTX_LAN0_P	50	VCC
25	GND	51	VCC
26	NC		



● Dimensions: mm



All above information are provided by Sinotronics BTP Product Team. In case of any question or technical support needed, please feel free to contact us: [service@sinotronics.com](mailto:service@sinotronics.com).