

HummingBoard CBi

Datasheet

NXP i.MX6™ based industrial gateway



Overview

HummingBoard CBi is the ultimate embedded platform, tailor made for Industrial IoT or Industry 4.0 solutions. The brand new HummingBoard CBi includes all features of the powerful HummingBoard family, with added CAN Bus and RS-485 connectors, and optional industrial metal enclosure.

HummingBoard CBi Highlighted Features

- ✿ Based on NXP's iMX6 Single to Quad Core
- ✿ CAN Bus connector
- ✿ Up to 2GB DDR3
- ✿ Optimal Industrial IoT platform
- ✿ Feature rich

System Specifications

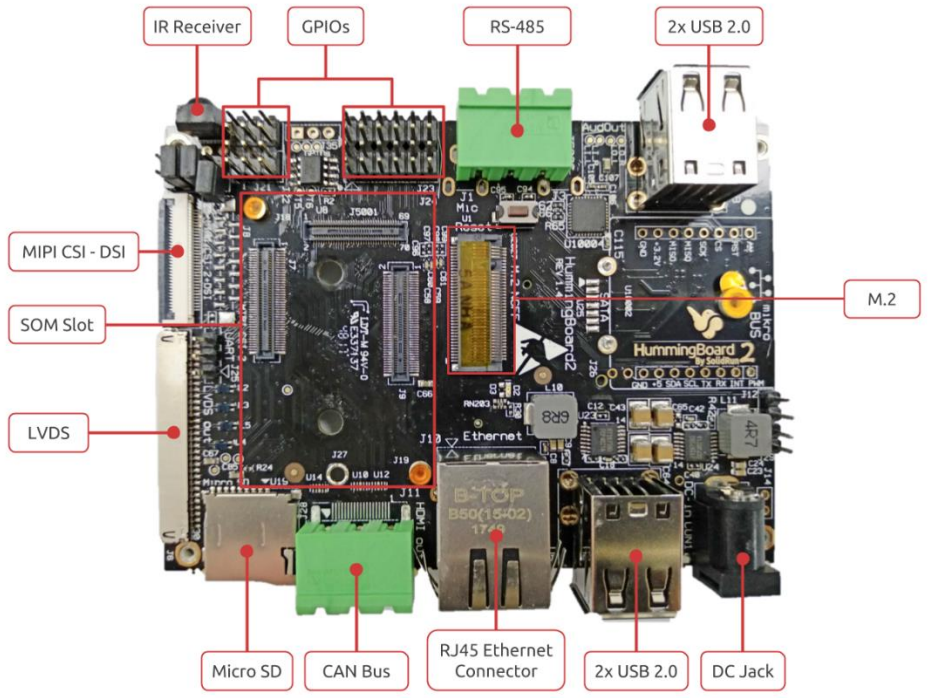
HummingBoard CBI									
SOM Model	i.MX6 based Solo to Quad Core SOM								
Memory and Storage	Up to 2GB DDR3 MicroSD eMMC (8GB) M.2 (2242)*								
Connectivity	1×RJ-45** CAN Bus 1×RS-485 4×USB 2.0 mPCIE with SIM card holder								
Media	MIPI-CSI-2 and MIPI-DSI Parallel Camera (on GPIO header) LVDS								
I/O	Reset Button 36 pins GPIO Header RTC with battery IR								
Power	7V-36V, 5.5mm in (Twist and Lock mechanism)								
Software	Linux								
Environment	<table border="0"> <tr> <td>Ambient temperature:</td> <td>-40°C to 85°C</td> </tr> <tr> <td>Enclosed Ambient temperature:</td> <td>-25°C to 65°C</td> </tr> <tr> <td>CPU die temperature:</td> <td>-40°C to 105°C</td> </tr> <tr> <td colspan="2">Humidity (non-condensing): 10% - 90%</td> </tr> </table>	Ambient temperature:	-40°C to 85°C	Enclosed Ambient temperature:	-25°C to 65°C	CPU die temperature:	-40°C to 105°C	Humidity (non-condensing): 10% - 90%	
Ambient temperature:	-40°C to 85°C								
Enclosed Ambient temperature:	-25°C to 65°C								
CPU die temperature:	-40°C to 105°C								
Humidity (non-condensing): 10% - 90%									
Dimensions (W×L)	102mm×69mm								
Enclosure	Optional Industrial Metal Enclosure								

(*) Supported with SOM i2eX and above.

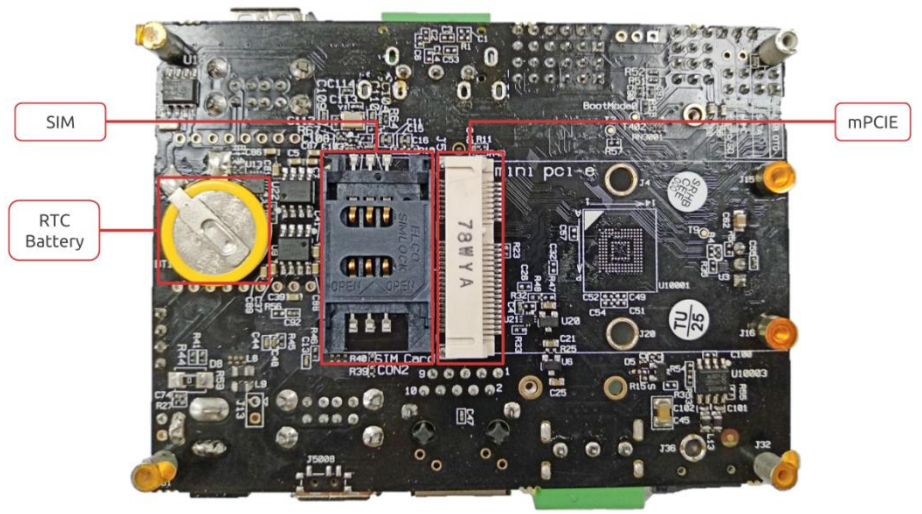
(**) 1000Mbps link is limited to 470Mbps actual bandwidth due to internal chip busses limitation.

Interfaces

Top View:



Bottom View:



Available SKUs for HummingBoard CBI

SKU	Description
SRMX6QDWT1D02GE008C00IE	SOM iMX6 Quad HummingBoard CBI Inc. WiFi/BT 2GB DDR 8GB eMMC Ind. Temp R1.0
SRMX6DLWT1D01GE008C00IE	SOM iMX6 Dual HummingBoard CBI Inc. WiFi/BT 1GB DDR 8GB eMMC Ind. Temp R1.0

(*) Different configurations available for MOQ.

Safety Notice

- This device is to be used with Certified Power adaptor with output rated 12VDC, 1.5A. Power adapter must meet Limited power source (LPS) requirements.
- Power adapter must meet local safety standards and requirements based on product intended use.
- Power adapter must meet Operating environment conditions as specified above.

Disposal

Follow local regulations regarding disposal of the product. Dispose of your product in accordance with local regulations. In some areas, the disposal of these items in household or business trash may be prohibited.

Help us protect the environment- recycle!

IMPORTANT NOTICE – Please Read Carefully

No warranty of accuracy is given concerning the contents of the information contained in this document. To the extent permitted by law no liability (including liability to any person by reason of negligence) will be accepted by SolidRun Ltd. Or its employees for any direct or indirect loss or damage caused by omissions from or inaccuracies in this document.

SolidRun Ltd. Reserves the right to change details in this publication without notice

Product and company names herein may be the trademarks of their respective owners.

Information in this document supersedes and replaces information previously supplied in any prior versions of this document.

Support

For technical support please visit:

Our developer center – <https://developer.solid-run.com/>

For direct support please contact us at: support@solid-run.com

Documentation

Additional documentation available at:

<https://developer.solid-run.com/products/hummingboard-cbi/>