



KARSON TECHNOLOGY LIMITED

Unit 06, 12/F., Vanta Industrial Centre, 21-33 Tai Lin Pai Road,
Kwai Chung, N.T. Hong Kong
Tel : (852) 2421 0833 Fax : (852) 2421 9951
E-mail: karson@karson-tech.com.hk
Website: <http://www.karson-tech.com.hk>

Version 10.11E

* Karson certifies that all products produced by Karson conforms to agreed standards,
but will not be liable for all direct or indirect legal responsibilities whatsoever, Karson
reserves the right to alter all Karson parts without notice.



Introduction

公司簡介

About Us

Karson Technology was established in 1990 in Hong Kong. Over the years, we have been dedicated to designing, marketing and manufacturing various types of high-grade electronic components for our valuable customers. Our range includes terminal blocks, sub-lines in cable assemblies, plasma surge arresters, connectors and more.

Today, we focus our experience on manufacturing terminal blocks with a continuously growing capacity. We offer a wide range of services with contracted OEM and ODM manufacturers. We are aiming to extend our market boundaries all over the world through service and product quality to meet our customers' requirements.

Vision and Values

- To provide the most comprehensive services to meet the expectation of our valued customers
- To improve our product quality on a continuing basis within the dynamic and turbulent business environment, through continuous innovation and absolute quality control with every member involved in our team
- To ensure Total Quality Management (TQM) is applied to all functions and positions at all levels within the entire organisation, i.e. Quality must come first under any circumstances
- To enhance values to our stakeholders; intend to keep our clients, suppliers, employees and parties related in high satisfaction



Testimonials

Karson have obtained VDE Certificates, UL Certificates, ISO 9001:2000 Certificates at an internationally recognised standard, and all our products are of RoHS Compliance.

Our Factory

By now, Karson has over 10 years manufacturing experience with modern facilities and advanced machineries to produce first-grade electronic components. Our factory is supported by our outstanding team of engineers and technicians dedicated to enhance production efficiency and effectiveness.

Having set up our own production plant at Wenzhou, we could now enjoy the benefit from a low production cost and have it shared with our customers. Moreover, our Sales Team and Management in Hong Kong have constantly interacted with the production line at Wenzhou, which have thus structured a more cohesive bonding and enhanced our development continuously.

有關我們

嘉盛科技有限公司成立於1990年。過去，嘉盛一直致力拓展開發電子零件的設計、銷售及生產，務求向各尊貴客戶提供高質素的電子零件產品，當中包括端子座、電線組裝、放電管及連接器等等。此外，隨著業務不斷增長，嘉盛亦於90年初在溫州自設廠房，主力生產端子座，至今已有多達300名員工。

時至今日，嘉盛已累積了生產端子座的豐富經驗，且產量持續遞增。而其他電子產品，則由合約加工廠生產，並為信心保證。故此，藉著透過採用以滿足客戶為大前題的產品及服務質素管理，嘉盛希望能把業務充分地擴展到海外市場，遍佈全世界。

展望與價值

- 提供最全面的服務以滿足尊貴客戶的需求
- 透過團隊不斷創新的精神及嚴密的品質監控，持續於動蕩的營商環境中提升產品質素
- 確保公司每一個部門、架構及層次均實行全面品質管理 – 令“品質”成為每一個行動及每一件產品的基本要求
- 保持及增加客戶、供應商、員工及相關參與者的投放價值

認證

嘉盛科技有限公司已榮獲國際認可的VDE證書、UL證書、ISO證書；所有產品均屬RoHS認證。

生產設備

至今，嘉盛科技已累積了超過10年的廠房經驗，以最先進的儀器及最新穎的設備生產出最優質的電子零件。加上工程及技術部團隊的配合及支持，工廠的產量及效率均得以大大提升。

自於溫州設立廠房後，我們現能與客戶共同享有以低成本作生產的利潤。此外，香港的管理層及業務部與溫州的生產部經常保持緊密聯繫，從而加強雙方的凝聚力及讓持續發展變得更為鞏固。



KARSON
TECHNOLOGY

Solderless Terminals & Splices

產品目錄



001 系列
SERIES 001
Ring Terminals



011 系列
SERIES 011
Pin Terminals
(Type TVP)



020 系列
SERIES 020
Bullet - Female



002 系列
SERIES 002
Fork Terminals



012 系列
SERIES 012
Pin Terminals
(Type TVB)



021 系列
SERIES 021
Butt Splices



003 系列
SERIES 003
Non Insulated Ring Terminals



013 系列
SERIES 013
Pin Terminals
(Type TNP)



025 系列
SERIES 025
Piggyback Connectors



004 系列
SERIES 004
Non Insulated Fork Terminals



014 系列
SERIES 014
Pin Terminals
(Type TNB)



G26 系列
SERIES G26
Cord End Terminals
Stripping Quick Splice



005 系列
SERIES 005
Copper Tube Terminals
(Type GTNR)



015 系列
SERIES 015
Quick Disconnect
- Male



007 系列
SERIES 007
Copper Tube Terminals
(Type CT)



016 系列
SERIES 016
Quick Disconnect
- Female



008 系列
SERIES 008
Non Insulated
Butt Connectors



017 系列
SERIES 017
Quick Disconnect
- Female (Full Insulated)



010 系列
SERIES 010
Pin Terminals
(Type GTNE)



019 系列
SERIES 019
Bullet - Male



Reference Data

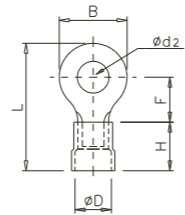
AWG	Conductor Sizes		Dia.	
	Area		mm	in
	mm ²	CMA		
26	.128	252	.404	.0159
25	.161	320	.454	.0179
24	.205	404	.511	.0201
23	.259	511	.574	.0226
22	.234	640	.643	.0253
21	.412	812	.724	.0285
20	.510	1,020	.813	.0320
19	.653	1,290	.912	.0359
18	.823	1,620	1.02	.0453
17	1.04	2,050	1.15	.045
16	1.31	2,580	1.29	.051
15	1.65	3,260	1.45	.057
14	2.08	4,110	1.63	.064
13	2.63	5,180	1.83	.072
12	3.31	6,530	2.05	.080
11	4.17	8,230	2.30	.091
10	5.26	10,400	2.59	.102
9	6.63	13,100	2.91	.114
8	8.37	16,500	3.26	.129
7	10.6	20,800	3.66	.144
6	13.3	26,200	4.12	.162
5	16.4	33,100	4.62	.182
4	21.2	47,700	5.19	.204
3	26.7	52,600	5.82	.229
2	33.6	66,300	6.54	.258
1	42.4	83,700	7.35	.289
1/0	55.5	109,600	8.40	.331
2/0	67.4	133,000	9.26	.365
3/0	85.01	168,000	10.4	.410
4/0	107.2	212,000	11.68	.460
250 MCM	126.6	250 MCM	12.70	.500
300 MCM	152.1	300 MCM	13.92	.548
350 MCM	177.6	350 MCM	15.04	.592
400 MCM	202.2	400 MCM	16.05	.632
450 MCM	227.93	450 MCM	17.04	.671
500 MCM	252.9	500 MCM	17.95	.707
550 MCM	278.9	550 MCM	18.85	.742
600 MCM	304.3	600 MCM	19.69	.775
650 MCM	328.9	650 MCM	20.47	.806



Stud Sizes		Hole Dia.	
American in.	Metric mm	in.	mm
# 0	.060	/	/
# 1	.073	2	.087
# 2	.086	2.6	/
# 3	.099	/	.126
# 4	.112	3	3.2
# 5	.125	/	/
# 6	.138	3.5	.146
# 8	.164	4	.169
# 10	.190	5	.209
# 12	.216	6	6.4
# 14	.242	/	.252
1/4	.250	/	/
5/16	.312	8	21/64
3/8	.375	9	12/32
		10	13/32
7/16	.437	10	29/64
1/2	.500	12	33/64
5/8	.625	16	21/32
3/4	.750	19	51/64
		20	53/64
7/8	.875	22	29/32
1"	1.000	26	1-1/32

Ring Terminals

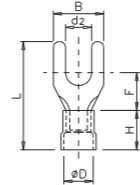
SPECIFICATION
 Electrolytic Copper
 Tin Plated
 Easy Entry
 P.V.C. Insulation



Part No.	ød2	B	L	F	H	øD	Wire Size AWG(mm²)	Current Rating	Insulation Color	Qty/Box	Weight/Box					
KTL-001-01	3.2	5.5	16.5	4.3	9.5	3.5	22~20 (0.25~1.0)	10A	Red	3000	1.2kg					
KTL-001-02	4.3	8.0	20.0	6.6						3000	1.6kg					
KTL-001-03	5.3	8.0	20.0	6.6						3000	1.6kg					
KTL-001-04	3.2	5.5	18.0	4.3	11.0	4.0	22~16 (0.25~1.65)	19A	Red	3000	1.8kg					
KTL-001-05	3.7	5.5	18.0	4.3						3000	1.7kg					
KTL-001-06	3.2	6.6	20.9	6.6						3000	2.0kg					
KTL-001-07	3.7	6.6	20.9	6.6						3000	2.1kg					
KTL-001-08	4.3	8.0	22.3	7.3						3000	2.3kg					
KTL-001-09	4.3	6.6	20.9	6.6						3000	2.0kg					
KTL-001-10	5.3	8.0	22.3	7.3						3000	2.2kg					
KTL-001-11	6.4	11.6	28.2	11.4						2000	2.3kg					
KTL-001-12	8.4	11.6	28.2	11.4						2000	1.9kg					
KTL-001-13	3.2	8.5	23.0	7.75						11.0	4.5	16~14 (1.04~2.63)	27A	Blue	2000	2.0kg
KTL-001-14	3.7	6.6	20.6	6.3	2000	1.9kg										
KTL-001-15	4.3	8.5	23.0	7.75	2000	2.0kg										
KTL-001-16	4.3	6.6	20.6	6.3	2000	1.6kg										
KTL-001-17	5.3	9.5	23.0	7.25	2000	2.0kg										
KTL-001-18	6.4	12.0	28.0	11.0	2000	2.7kg										
KTL-001-19	8.4	12.0	28.0	11.0	2000	2.6kg										
KTL-001-20	10.5	13.6	31.7	13.9	1500	1.8kg										
KTL-001-21	4.3	9.5	26.9	8.2	13.7	6.3	12~10 (2.63~4.6)	37A	Yellow						1500	2.0kg
KTL-001-22	5.3	9.5	26.9	8.2											1500	2.2kg
KTL-001-23	6.4	12.0	28.3	8.5						1500	2.5kg					
KTL-001-24	3.7	9.5	26.7	8.25	13.7	6.3	12~10 (2.63~6.64)	48A	Yellow	1500	3.1kg					
KTL-001-25	4.3	9.5	26.7	8.25						1500	2.9kg					
KTL-001-26	5.3	9.5	26.7	8.25						1500	2.8kg					
KTL-001-27	6.4	12.0	32.7	13.0						1500	2.5kg					
KTL-001-28	8.4	15.0	34.9	13.7						1500	4.0kg					
KTL-001-29	10.5	15.0	34.9	13.7						1500	3.7kg					

Fork Terminals

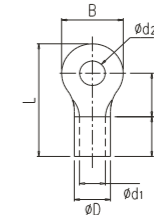
SPECIFICATION
 Electrolytic Copper
 Tin Plated
 Easy Entry
 P.V.C. Insulation



Part No.	ød2	B	L	F	H	øD	Wire Size AWG(mm²)	Current Rating	Insulation Color	Qty/Box	Weight/Box					
KTL-002-01	3.2	5.7	22.5	6.5	11.0	4.0	22~16 (0.25~1.65)	19A	Red	3000	2.2kg					
KTL-002-02	3.7	5.7	22.5	6.5						3000	2.0kg					
KTL-002-03	3.7	6.2	22.5	6.5						3000	2.1kg					
KTL-002-04	4.3	6.4	22.5	6.5						3000	2.1kg					
KTL-002-05	4.3	7.2	22.5	6.5						3000	2.2kg					
KTL-002-06	5.3	8.0	22.5	6.5	11.0	4.5	16~14 (1.04~2.63)	27A	Blue	3000	2.2kg					
KTL-002-07	3.2	5.7	22.5	6.5						2000	1.7kg					
KTL-002-08	3.7	5.7	22.5	6.5						2000	1.6kg					
KTL-002-09	3.7	6.2	22.5	6.5						2000	1.7kg					
KTL-002-10	4.3	6.4	22.5	6.5						2000	1.7kg					
KTL-002-11	4.3	7.2	22.5	6.5						2000	1.8kg					
KTL-002-12	5.3	8.0	22.5	6.5						2000	1.7kg					
KTL-002-13	6.4	10.7	25.5	9.0						2000	2.3kg					
KTL-002-14	4.3	8.0	25.4	6.9						13.7	6.3	12~10 (2.63~4.62)	37A	Yellow	1500	2.0kg
KTL-002-15	5.3	8.0	25.4	8.0											1500	2.2kg
KTL-002-16	3.2	7.3	26.7	7.1	1500	2.7kg										
KTL-002-17	3.7	8.2	26.7	7.5	13.7	6.3	12~10 (2.63~6.64)	48A	Yellow	1500	2.3kg					
KTL-002-18	4.3	8.2	26.7	7.5						1000	1.9kg					
KTL-002-19	5.3	9.0	26.7	8.0						1000	1.9kg					
KTL-002-20	6.4	12.0	32.7	12.0						1000	2.5kg					

Non Insulated Ring Terminals

SPECIFICATION
 Electrolytic Copper
 Soldered Barrel
 Tin Plated

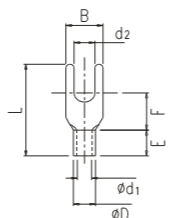


Part No.	ød2	B	L	F	E	ød1	øD	Wire Size AWG(mm²)	Current Rating	Qty/Box	Weight/Box					
KTL-003-01	3.2	5.5	11.5	4.3	4.5	1.3	2.8	22~20 (0.25~1.0)	10A	7000	2.8kg					
KTL-003-02	4.3	8.0	15.0	6.6						6000	3.5kg					
KTL-003-03	5.3	8.0	15.0	6.6						6000	3.1kg					
KTL-003-04	3.2	5.5	11.5	4.3	4.5	1.7	3.4	22~16 (0.25~1.65)	19A	7000	2.9kg					
KTL-003-05	3.7	5.5	11.5	4.3						9000	3.3kg					
KTL-003-06	3.7	6.6	14.4	6.6						6000	3.6kg					
KTL-003-07	3.2	6.6	14.4	6.6						6000	3.2kg					
KTL-003-08	4.3	8.0	15.5	7.3						6000	3.5kg					
KTL-003-94	4.3	6.6	14.4	6.6						6000	2.9kg					
KTL-003-95	5.3	8.0	15.8	7.3						6000	3.3kg					
KTL-003-09	6.4	11.6	21.7	11.4						4000	3.8kg					
KTL-003-10	8.4	11.6	21.7	11.4						4000	3.1kg					
KTL-003-11	3.2	8.5	16.8	7.75						4.8	2.3	4.0	16~14 (1.04~2.63)	27A	5000	3.8kg
KTL-003-12	3.7	6.6	14.4	6.3	7000	3.9kg										
KTL-003-13	4.3	8.5	16.8	7.75	4000	3.2kg										
KTL-003-14	4.3	6.6	14.4	6.3	5000	2.8kg										
KTL-003-15	5.3	9.5	16.8	7.25	4000	3.2kg										
KTL-003-16	6.4	12.0	21.8	11.0	3000	2.4kg										
KTL-003-17	8.4	12.0	21.8	11.0	3000	2.9kg										
KTL-003-18	10.5	13.6	25.5	13.9	3000	2.9kg										
KTL-003-19	4.3	9.5	20.0	8.2	3000	3.6kg										
KTL-003-20	5.3	9.5	20.0	8.2	3000	3.5kg										
KTL-003-21	6.4	12.0	21.4	8.5	3000	4.1kg										
KTL-003-22	3.7	9.5	19.8	8.25	6.8	3.2	5.0	12~10 (2.63~4.6)	37A	3000	5.0kg					
KTL-003-23	4.3	9.5	19.8	8.25						3000	4.7kg					
KTL-003-24	5.3	9.5	19.8	8.25						3000	4.4kg					
KTL-003-25	6.4	12.0	25.8	13.0						2000	4.1kg					
KTL-003-26	8.4	15.0	28.0	13.7						2000	4.0kg					
KTL-003-27	10.5	15.0	28.0	13.7						2000	3.9kg					
KTL-003-28	5.3	12.0	23.8	9.3						2000	4.3kg					
KTL-003-29	6.4	12.0	23.8	9.3						2000	3.9kg					
KTL-003-30	8.4	15.0	29.8	13.8						1000	4.6kg					
KTL-003-31	10.5	15.0	29.8	13.8						1000	3.8kg					
KTL-003-32	13.0	20.0	33.5	15.0	600	4.4kg										
KTL-003-33	5.3	12.0	27.5	11.5	8.5	4.5	6.9	8 (6.64~10.52)	62A	1000	5.0kg					
KTL-003-34	6.4	12.0	27.5	11.5						1000	4.9kg					
KTL-003-35	8.4	16.0	32.5	14.5						700	4.2kg					
KTL-003-36	10.5	16.0	32.5	14.5						600	3.3kg					
KTL-003-37	13.0	22.0	40.8	19.8						600	4.7kg					
KTL-003-39	6.4	16.5	33.7	13.45						600	6.1kg					
KTL-003-40	8.4	16.5	33.7	13.45						12.0	7.7	11.3	4 (16.78~26.66)	115A	400	3.4kg
KTL-003-41	10.5	16.5	36.7	15.95											400	3.9kg
KTL-003-42	13.0	22.0	42.5	19.5											400	4.1kg
KTL-003-43	6.4	22.0	41.0	16.0											300	5.1kg
KTL-003-44	8.4	22.0	41.0	16.0	300	4.9kg										
KTL-003-45	10.5	22.0	43.0	18.0	300	5.0kg										
KTL-003-46	13.0	22.0	43.0	18.0	14.0	9.4	13.4	2 (26.66~42.42)	160A	300	4.7kg					
KTL-003-47	8.4	22.0	47.0	18.0						200	4.4kg					
KTL-003-48	10.5	22.0	47.0	18.0						200	4.3kg					
KTL-003-49	13.0	22.0	49.0	20.0						200	4.1kg					
KTL-003-50	17.0	32.0	54.0	20.0						200	4.3kg					
KTL-003-51	19.0	32.0	54.0	20.0						200	4.6kg					
KTL-003-52	8.4	27.0	50.5	18.0						200	4.2kg					
KTL-003-53	10.5	27.0	50.5	18.0						200	4.1kg					
KTL-003-54	13.0	27.0	52.5	20.0						19.0	13.5	17.5	2/0 (60.57~76.28)	235A	200	4.1kg
KTL-003-55	17.0	32.0	55.0	20.0											200	4.1kg
KTL-003-56	19.0	32.0	55.0	20.0	200	5.1kg										

Part No.	ød2	B	L	F	E	ød1	øD	Wire Size AWG(mm²)	Current Rating	Qty/Box	Weight/Box
KTL-003-57	8.4	27.0	52.5	19.0	20.0	14.5	19.5	3/0 (76.28~96.3)	255A	100	3.9kg
KTL-003-58	10.5	27.0	52.5	19.0						100	3.8kg
KTL-003-59	13.0	27.0	52.5	19.0						100	3.7kg
KTL-003-60	17.0	32.0	58.0	22.0						100	4.6kg
KTL-003-61	19.0	32.0	58.0							100	4.3kg
KTL-003-62	21.0	32.0	58.0	22.0						100	4.1kg
KTL-003-63	10.5	28.5	55.25	20.0	21.0	16.4	22.4	4/0 (96.3~113.04)	300A	80	4.2kg
KTL-003-64	13.0	28.5	55.25	20.0						80	4.2kg
KTL-003-65	17.0	32.0	69.0	32.0						80	5.1kg
KTL-003-66	19.0	32.0	69.0	32.0						80	4.9kg
KTL-003-67	21.0	32.0	69.0	32.0						80	4.6kg
KTL-003-68	23.0	32.0	69.0	32.0						80	4.4kg
KTL-003-69	10.5	32.0	62.0	22.0	24.0	18.0	24.0	4/0 (113.04~117.2)	350A	60	4.0kg
KTL-003-70	13.0	32.0	62.0	22.0						60	3.9kg
KTL-003-71	17.0	32.0	72.0	32.0						60	5.4kg
KTL-003-72	19.0	32.0	72.0	32.0						60	6.1kg
KTL-003-73	21.0	32.0	72.0	32.0						60	5.9kg
KTL-003-74	23.0	32.0	72.0	32.0						60	4.0kg
KTL-003-75	10.5	36.0	68.0	23.0	27.0	19.5	26.5	25-300MCM (117.2~152.05)	395A	40	3.9kg
KTL-003-76	13.0	36.0	68.0	23.0						40	3.8kg
KTL-003-77	17.0	36.0	68.0	23.0						40	3.6kg
KTL-003-78	19.0	36.0	81.0	36.0						40	4.9kg
KTL-003-78	21.0	36.0	81.0	36.0						40	4.7kg
KTL-003-80	25.0	36.0	81.0	36.0						40	4.6kg
KTL-003-81	10.5	40.0	73.0	24.5	28.5	21.0	28.6	300~350MCM (152.05~192.6)	400A	40	5.1kg
KTL-003-82	13.0	40.0	73.0	24.5						40	5.1kg
KTL-003-83	17.0	40.0	73.0	24.5						40	4.9kg
KTL-003-84	21.0	40.0	87.5	39.0						40	5.3kg
KTL-003-85	13.0	44.0	78.0	24.5						40	4.9kg
KTL-003-86	17.0	44.0	78.0	24.5						40	5.3kg
KTL-003-87	21.0	44.0	91.0	37.5	31.5	24.0	32.5	400MCM (192.6~242.27)	470A	40	5.1kg
KTL-003-88	23.0	44.0	91.0	37.5						40	4.9kg
KTL-003-89	25.0	44.0	91.0	37.5						40	4.7kg
KTL-003-90	13.0	50.5	94.25	33.5						20	5.2kg
KTL-003-91	17.0	50.5	94.25	33.5						20	4.9kg
KTL-003-92	21.0	50.5	104.75	45.0						20	6.1kg
KTL-003-93	25.0	50.5	104.75	45.0	20	5.6kg					

Non Insulated Fork Terminals

SPECIFICATION
Electrolytic Copper
Soldered Barrel
Tin Plated

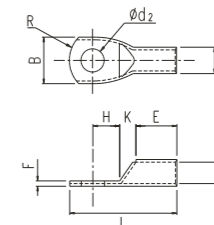


Part No.	ød2	B	L	F	H	ød1	øD	Wire Size AWG(mm²)	Current Rating	Qty/Box	Weight/Box
KTL-004-01	3.2	5.7	16.0	6.5	4.5	1.7	3.4	22~16 (0.25~1.65)	19A	5000	2.7kg
KTL-004-02	3.7	5.7	16.0	6.5						5000	2.6kg
KTL-004-03	3.7	6.2	16.0	6.5						5000	2.7kg
KTL-004-04	4.3	6.4	16.0	6.5						6000	3.0kg
KTL-004-05	4.3	7.2	16.0	6.5						6000	3.1kg
KTL-004-06	5.3	8.0	16.0	6.5						6000	3.0kg
KTL-004-07	3.2	5.7	16.0	6.5	4.5	2.3	4.0	16~14 (1.04~2.63)	27A	5000	3.4kg
KTL-004-08	3.7	5.7	16.0	6.5						5000	3.2kg
KTL-004-09	3.7	6.2	16.0	6.5						5000	3.1kg
KTL-004-10	4.3	6.4	16.0	6.5						5000	3.2kg
KTL-004-11	4.3	7.2	16.0	6.5						5000	3.3kg
KTL-004-12	5.3	8.0	16.0	6.5						5000	3.2kg
KTL-004-13	6.4	10.7	19.0	9.0	3000	2.7kg					

Part No.	ød2	B	L	F	H	ød1	øD	Wire Size AWG(mm²)	Current Rating	Qty/Box	Weight/Box					
KTL-004-14	4.3	8.0	18.0	6.9	6.3	3.0	5.0	12~10 (2.63~4.6)	37A	4000	4.1kg					
KTL-004-15	3.7	5.7	18.0	8.0						4000	4.1kg					
KTL-004-16	3.2	7.3	19.5	7.1						3000	4.4kg					
KTL-004-17	3.7	8.2	19.5	7.5						3000	4.1kg					
KTL-004-18	4.3	8.2	19.5	7.5						3000	4.3kg					
KTL-004-19	5.3	9.0	19.5	8.0						2000	2.9kg					
KTL-004-20	6.4	12.0	25.5	12.0	6.5	6.5	5.6	12~10 (2.63~6.64)	48A	2000	4.1kg					
KTL-004-21	6.7	12.0	24.0	8.5						8.6	4.5	6.9	8 (6.64~10.52)	62A	1600	3.7kg
KTL-004-22	5.3	12.0	27.5	11.0						10.0	5.8	8.8	6 (10.52~16.78)	88A	1000	4.7kg
KTL-004-23	6.7	12.0	27.5	11.0						1000	4.7kg					
KTL-004-24	8.4	14.0	34.0	13.0						12.0	12.0	11.3	4 (16.78~26.66)	115A	400	3.5kg

Copper Tube Terminals (Type GTNR)

SPECIFICATION
Soft Drawn Pure Copper Tube



Part No.	ød2	B	L	F	H	ød1	øD	E	K	R	Wire Size AWG(mm²)	Qty/Box	Weight/Box												
KTL-005-01	5.2	8.0	16.0	1.0	5.0	2.2	4.0	5.0	2.0	5.0	16~13 (1.10~2.58)	5000	4.6kg												
KTL-005-02	4.2	8.0	18.0	1.0	5.0	2.9	4.5	7.0	2.0	7.0	14~11 (2.45~4.32)	4000	4.9kg												
KTL-005-03	5.2	8.0	20.0	1.0	6.0							3000	4.4kg												
KTL-005-04	6.4	10.0	20.0	0.8	6.0							3000	4.1kg												
KTL-005-05	5.2	10.0	20.0	1.0	6.0							2000	3.1kg												
KTL-005-06	6.4	10.0	20.0	1.0	6.0							2000	2.9kg												
KTL-005-07	5.2	10.0	23.0	1.2	6.0							2000	5.1kg												
KTL-005-08	6.4	10.0	26.0	1.2	7.5	4.2	6.0	9.0	3.0	7.0	9 (6.77~7.10)	1500	4.0kg												
KTL-005-09	8.4	12.0	26.0	1.0	7.5							1500	3.7kg												
KTL-005-10	6.4	12.4	26.5	1.3	8.0							1000	3.7kg												
KTL-005-11	8.4	12.4	27.5	1.3	8.0							1000	3.5kg												
KTL-005-12	6.4	12.4	31.0	1.3	8.0							1000	3.7kg												
KTL-005-13	8.4	12.4	31.0	1.3	8.0							1000	4.2kg												
KTL-005-14	6.4	14.0	32.0	2.0	8.0	5.8	7.8	12.0	4.0	7.0	6 (12.9~14.8)	1000	4.2kg												
KTL-005-15	8.4	15.5	34.0	1.6	9.0							7.5	9.5	12.0	4.5	10.0	4~3 (20.6~25.8)	600	4.1kg						
KTL-005-16	10.5	17.5	37.0	1.4	10.5							500	3.5kg												
KTL-005-17	6.4	15.5	38.0	2.8	9.0							8.6	11.4	15.0	5.0	10.0	2~1 (32.0~40.0)	400	5.8kg						
KTL-005-18	8.4	15.5	38.0	2.8	9.0													400	5.1kg						
KTL-005-19	10.5	17.5	40.5	2.5	10.5													400	5.4kg						
KTL-005-20	8.4	18.0	43.5	2.8	11.0	9.6	12.6	16.0	6.0	10.0	1/0 (49.0)							300	5.4kg						
KTL-005-21	10.5	18.0	43.5	2.8	11.0													300	5.1kg						
KTL-005-22	8.4	21.0	50.0	2.8	13.0													150	5.0kg						
KTL-005-23	10.5	21.0	50.0	2.8	13.0							200	6.1kg												
KTL-005-24	13.0	21.0	50.0	2.8	13.0							150	3.5kg												
KTL-005-25	10.5	25.0	55.0	3.9	13.0							100	4.3kg												
KTL-005-26	13.0	25.0	55.0	3.9	13.0	100	3.8kg																		
KTL-005-27	13.0	28.0	60.0	4.7	14.0	15.0	19.8	22.0	10.0	16.0	4/0~300MCM (106~133)	50	3.2kg												
KTL-005-28	17.0	28.0	64.0	4.7	16.0							50	3.1kg												
KTL-005-29	13.0	30.0	69.0	4.7	16.0							16.5	21.2	26.0	11.0	24.0	300~350MCM (152.05~192.6)	60	5.1kg						
KTL-005-30	17.0	30.0	69.0	4.7	16.0													60	4.8kg						
KTL-005-31	17.0	34.0	78.0	5.0	17.0													18.0	23.5	32.0	12.0	24.0	480MCM (197~205)	40	4.4kg
KTL-005-32	17.0	38.0	92.0	5.5	20.0													21.5	26.5	38.0	14.0	24.0		500~600MCM (242.27~325.0)	30
KTL-005-33	21.0	38.0	92.0	5.5	20.0	30	4.4kg																		
KTL-005-34	17.0	43.0	101.0	6.5	22.0	23.5	30.0	42.0	15.0	32.0	500~600MCM (242.27~325.0)														20
KTL-005-35	21.0	43.0	101.0	6.5	22.0							20	4.6kg												
KTL-005-36	17.0	51.3	114.0	8.0	26.0							28.5	36.5	44.0	18.0	32.0	500~600MCM (242.27~325.0)								14
KTL-005-37	21.0	51.3	114.0	8.0	26.0																		15		5.7kg
KTL-005-38	17.0	56.0	124.0	9.0	28.0													30.5	39.0	48.0	20.0	40.0	500~600MCM (242.27~325.0)	10	4.9kg
KTL-005-39	21.0	56.0	124.0	9.0	28.0																			10	5.1kg
KTL-005-40	21.0	65.0	144.0	10.0	33.0	35.5	45.0	56.0	22.0	40.0	40													4.4kg	

Copper Tube Terminals (Type CT)



SPECIFICATION
Soft Drawn Pure Copper Tube

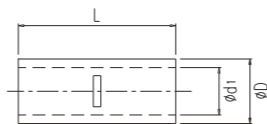


Part No.	ød2	B	L	H	ød1	øD	E	K	A	R	Wire Size AWG(mm²)	Qty/Box	Weight/Box
KTL-007-01	6.4	11.0	26.0	7.0	4.2	6.0	8.0	4.0	14.0	7.0	9 (6.77~7.10)	1500	4.2kg
KTL-007-02	8.4	11.0	26.0	7.0								1500	3.8kg
KTL-007-03	6.4	12.0	31.5	7.5	5.0	7.0	12.0	4.5	15.0	7.0	8 (8.06~9.68)	1000	4.6kg
KTL-007-04	8.4	12.0	31.5	8.0								1000	4.2kg
KTL-007-05	6.4	12.0	37.0	7.5	5.8	7.8	14.0	5.0	18.0	7.0	6 (12.9~14.8)	700	4.4kg
KTL-007-06	8.4	12.0	37.0	8.0								700	4.2kg
KTL-007-07	8.4	15.0	41.0	10.5	7.5	9.5	17.0	6.0	18.0	10.0	4-3 (20.6~25.8)	500	4.4kg
KTL-007-08	10.5	15.0	41.0	10.5								500	4.1kg
KTL-007-09	8.4	15.5	43.0	10.5	8.6	11.4	17.0	6.0	20.0	10.0	2-1 (32.0~40.0)	300	4.4kg
KTL-007-10	10.5	15.5	43.0	10.5								300	4.2kg
KTL-007-11	8.4	16.0	46.5	10.5	9.6	12.6	19.0	7.5	20.0	10.0	1/0 (49.0)	250	4.8kg
KTL-007-12	10.5	16.0	46.5	10.5								250	4.6kg
KTL-007-13	8.4	21.0	51.0	11.0	12.0	15.0	21.0	8.0	22.0	14.0	3/0 (77.4)	150	4.2kg
KTL-007-14	10.5	16.0	46.5	10.5								150	4.1kg
KTL-007-15	8.4	24.0	58.0	12.0	13.5	17.4	25.0	10.0	23.0	14.0	3/0~4/0 (80.6~100)	100	4.7kg
KTL-007-16	10.5	24.0	58.0	12.0								100	4.6kg
KTL-007-17	8.4	27.6	62.0	13.0	15.0	19.8	26.0	11.0	25.0	16.0	3/0~300MCM (106~133)	80	5.6kg
KTL-007-18	10.5	27.6	62.0	13.0								80	5.4kg
KTL-007-19	13.0	24.0	62.0	13.0	16.5	21.2	30.0	12.0	25.0	24.0	300~350MCM (152.05~192.6)	60	4.9kg
KTL-007-20	10.5	30.0	67.0	13.0								60	4.8kg
KTL-007-21	13.0	30.0	67.0	13.0	21.5	26.5	40.0	15.0	39.0	24.0	480MCM (197~205)	30	4.8kg
KTL-007-22	13.0	37.0	94.0	20.0								20	4.9kg
KTL-007-23	17.0	42.0	99.0	20.0	23.5	30.0	44.0	16.0	39.0	32.0		20	4.6kg
KTL-007-24	21.0	42.0	99.0	20.0								15	5.6kg
KTL-007-25	17.0	51.0	113.0	25.0	28.5	36.5	46.0	18.0	49.0	32.0	500~600MCM (242.27~325.0)	15	5.9kg
KTL-007-26	21.0	51.0	113.0	25.0								10	4.9kg
KTL-007-27	17.0	55.0	123.0	27.0	30.5	39.0	50.0	20.0	53.0	40.0		10	5.1kg
KTL-007-28	21.0	55.0	123.0	27.0								30	4.8kg
KTL-007-29	21.0	64.0	143.0	32.0	35.5	45.0	58.0	22.0	63.0	40.0			

Non Insulated Butt Connectors



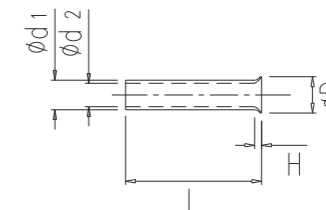
SPECIFICATION
Electrolytic Copper Tube
Inspection Hole
Conductor Stop
Tin Plated



Part No.	øD	ød1	L	Current Rating	Qty/Box	Weight/Box
KTL-008-01	3.3	1.9	20.0	19A	4000	4.0kg
KTL-008-02	4.0	2.2	20.0	19A	3000	4.5kg
KTL-008-03	4.5	2.9	20.0	27A	3000	5.0kg
KTL-008-04	5.2	3.6	20.0	37A	2000	4.1kg
KTL-008-05	6.0	4.2	20.0	48A	2000	5.1kg
KTL-008-06	7.0	5.2	20.0	62A	2000	5.5kg
KTL-008-07	7.5	5.8	40.0	88A	500	3.2kg
KTL-008-08	8.0	6.5	40.0	100A	500	3.4kg
KTL-008-09	9.5	7.5	45.0	115A	400	3.6kg
KTL-008-10	11.0	8.2	45.0	160A	200	3.4kg
KTL-008-11	12.5	9.5	45.0	215A	200	4.0kg

Part No.	øD	ød1	L	Current Rating	Qty/Box	Weight/Box
KTL-008-12	15.0	11.0	50.0	235A	150	5.4kg
KTL-008-13	17.4	13.4	50.0	255A	100	4.3kg
KTL-008-14	19.8	15.0	55.0	300A	60	3.7kg
KTL-008-15	21.2	16.0	60.0	395A	60	4.6kg
KTL-008-16	23.5	18.0	65.0	450A	40	3.9kg
KTL-008-17	26.5	21.0	80.0	470A	24	5.2kg
KTL-008-18	30.0	23.0	85.0	650A	20	4.3kg
KTL-008-19	36.5	28.0	90.0	650A	16	5.7kg
KTL-008-20	39.0	30.0	100.0	900A	10	4.2kg
KTL-008-21	42.0	32.0	100.0	950A	10	5.3kg
KTL-008-22	45.0	35.0	110.0	1040A	10	6.3kg

Pin Terminals (Type GTNE)



SPECIFICATION
Non Insulated
Copper Tube Terminals
Tin Plated



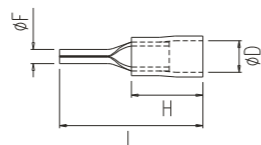
Part No.	L	ød1	ød2	øD	H	Conductor	Qty/Box	Weight/Box
KTL-010-01	6.0						22000	0.7kg
KTL-010-02	8.0	1.0	1.3	2.1	0.7	0.50	22000	0.8kg
KTL-010-03	10.0						22000	0.9kg
KTL-010-04	6.0						20000	1.0kg
KTL-010-05	8.0	1.2	1.5	2.5	0.7	0.75	20000	1.1kg
KTL-010-06	10.0						20000	1.2kg
KTL-010-07	6.0						18000	1.1kg
KTL-010-08	8.0						18000	1.2kg
KTL-010-09	10.0	1.4	1.8	2.7	0.7	1.00	18000	1.5kg
KTL-010-10	12.0						12000	1.2kg
KTL-010-11	7.0						14000	1.1kg
KTL-010-12	8.0						15000	1.3kg
KTL-010-13	10.0	1.7	2.0	2.9	1.0	1.50	14000	1.4kg
KTL-010-14	12.0						13000	1.6kg
KTL-010-15	7.0						10000	1.3kg
KTL-010-16	8.0						10000	1.6kg
KTL-010-17	10.0	2.3	2.6	3.5	1.0	2.50	10000	1.7kg
KTL-010-18	12.0						10000	1.7kg
KTL-010-19	8.0						7000	1.4kg
KTL-010-20	9.0						7000	1.5kg
KTL-010-21	10.0						8000	1.8kg
KTL-010-22	12.0	2.8	3.2	4.0	1.0	4.00	6000	1.5kg
KTL-010-23	15.0						6000	1.6kg
KTL-010-24	18.0						5000	1.4kg
KTL-010-25	10.0						5000	1.3kg
KTL-010-26	12.0						4000	1.2kg
KTL-010-27	15.0	3.5	3.9	4.8	1.0	6.00	3000	1.1kg
KTL-010-28	18.0						3000	1.2kg
KTL-010-29	12.0						3000	1.2kg
KTL-010-30	15.0	4.5	4.9	5.8	1.2	10.0	3000	1.3kg
KTL-010-31	18.0						3000	1.6kg
KTL-010-32	12.0						2000	1.1kg
KTL-010-33	15.0	5.8	6.2	7.5	1.5	16.0	2000	1.3kg
KTL-010-34	18.0						1500	1.2kg
KTL-010-35	15.0						1500	1.1kg
KTL-010-36	16.0						1500	1.3kg
KTL-010-37	18.0	7.3	7.7	9.5	1.5	25.0	1500	1.4kg
KTL-010-38	22.0						1500	1.6kg
KTL-010-39	16.0						1500	1.4kg
KTL-010-40	18.0						1500	1.6kg
KTL-010-41	20.0	8.3	8.7	11.0	1.5	35.0	1500	1.7kg
KTL-010-42	25.0						1500	1.7kg
KTL-010-43	18.0						1200	2.5kg
KTL-010-44	20.0	10.3	10.9	13.0	1.5	50.0	1200	2.7kg
KTL-010-45	25.0						1200	3.1kg
KTL-010-46	22.0						600	2.4kg
KTL-010-47	25.0	13.5	14.3	15.3	2.0	70.0	600	2.6kg
KTL-010-48	25.0						600	2.8kg
KTL-010-49	32.0	14.7	15.5	16.6	2.0	95.0	600	3.0kg
KTL-010-50	30.0						300	2.2kg
KTL-010-51	32.0	16.7	17.6	18.6	2.0	120.0	300	2.4kg
KTL-010-52	34.0						300	2.6kg
KTL-010-53	32.0						200	2.0kg
KTL-010-54	38.0	19.5	20.5	21.5	2.0	150.0	200	2.3kg

Pin Terminals

(Type TVP)

SPECIFICATION

Electrolytic Copper
Tin Plated
P.V.C. Insulation



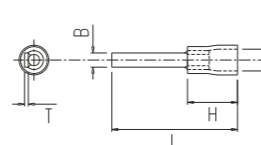
Part No.	L	øF	H	øD	Wire Size AWG(mm ²)	Current Rating	Insulation Color	Qty/Box	Weight/Box
KTL-011-01	22.7	2.0	10.7	4.0	22~16 (0.25~1.65)	19A	Red	3000	2.3kg
KTL-011-02	17.7							3000	1.9kg
KTL-011-03	19.7							3000	2.0kg
KTL-011-04	20.7							3000	2.1kg
KTL-011-05	27.7							3000	2.3kg
KTL-011-06	22.7	2.0	10.7	4.5	16~14 (1.04~2.63)	27A	Blue	2000	1.7kg
KTL-011-07	17.7							3000	2.2kg
KTL-011-08	19.7							3000	2.3kg
KTL-011-09	20.7							3000	2.4kg
KTL-011-10	27.7							2000	2.1kg
KTL-011-11	27.2							2.7	13.7

Pin Terminals

(Type TVB)

SPECIFICATION

Electrolytic Copper
Tin Plated
P.V.C. Insulation



Part No.	L	B	T	H	øD	Wire Size AWG(mm ²)	Current Rating	Insulation Color	Qty/Box	Weight/Box
KTL-012-01	19.5	2.8	0.8	11.0	4.0	22~16 (0.25~1.66)	19A	Red	3000	1.9kg
KTL-012-02	25.5	3.0							3000	2.3kg
KTL-012-03	28.5	2.45							2000	1.6kg
KTL-012-04	20.0	2.8							3000	2.2kg
KTL-012-05	27.0	2.8							2000	1.8kg
KTL-012-06	29.0	2.45	2000	1.7kg						
KTL-012-07	24.0	2.8	0.8	13.7	6.3	12~10 (2.63~6.64)	48A	Yellow	2000	2.7kg
KTL-012-08	32.0	4.5							2000	3.4kg

Pin Terminals

(Type TNP)

SPECIFICATION

Non Insulated
Ford Terminals
Electrolytic Copper
Soldered Barrel
Tin Plated



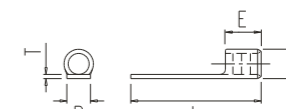
Part No.	L	øF	E	øD	Wire Size AWG(mm ²)	Current Rating	Qty/Box	Weight/Box
KTL-013-01	16.3	2.0	4.5	3.4	22~16 (0.25~1.65)	19A	5000	2.9kg
KTL-013-02	11.5						5000	2.1kg
KTL-013-03	13.5						5000	2.4kg
KTL-013-04	14.5						5000	2.6kg
KTL-013-05	21.5						4000	2.8kg
KTL-013-06	16.6	2.0	4.8	4.0	16~14 (1.04~2.63)	27A	5000	3.3kg
KTL-013-07	11.8						4000	3.1kg
KTL-013-08	13.8						5000	3.3kg
KTL-013-09	14.8						5000	2.1kg
KTL-013-10	21.8						4000	3.1kg
KTL-013-11	20.3						2.7	6.8

Pin Terminals

(Type TNB)

SPECIFICATION

Non Insulated
Ford Terminals
Electrolytic Copper
Soldered Barrel
Tin Plated



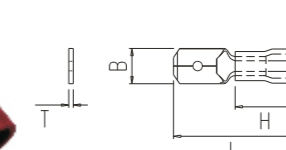
Part No.	L	B	T	E	øD	Wire Size AWG(mm ²)	Current Rating	Qty/Box	Weight/Box
KTL-014-01	13.5	2.8	0.8	4.5	3.4	22~26 (0.25~1.65)	19A	4000	2.2kg
KTL-014-02	19.0	3.0						4000	2.4kg
KTL-014-03	22.5	2.45						4000	2.5kg
KTL-014-04	13.8	2.8	0.8	4.8	4.0	16~14 (1.04~2.63)	27A	4000	2.3kg
KTL-014-05	20.8	2.8						4000	2.7kg
KTL-014-06	22.8	2.45						4000	2.9kg
KTL-014-07	16.8	2.8						3000	2.6kg
KTL-014-08	24.8	4.5	0.8	6.8	5.6	12~10 (2.63~6.64)	48A	3000	2.9kg

Quick Disconnect

(Male)

SPECIFICATION

Brass
Tin Plated
Easy Entry
P.V.C. Insulation



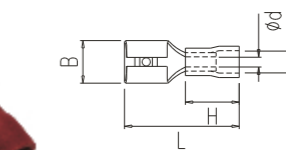
Part No.	L	B	T	H	øD	ød	Wire Size AWG(mm ²)	Current Rating	Insulation Color	Qty/Box	Weight/Box
KTL-015-01	19.2	2.8	0.5	10.0	4.0	1.7	22~16 (0.25~1.65)	10A	Red	4000	1.6kg
KTL-015-02	19.2	2.8	0.8							4000	2.6kg
KTL-015-03	19.2	4.8	0.5							3000	1.2kg
KTL-015-04	19.2	4.8	0.8							3500	2.7kg
KTL-015-05	21.0	6.3	0.8							4000	2.6kg
KTL-015-06	19.2	2.8	0.5	10.0	4.3	2.3	16~14 (1.04~2.63)	15A	Blue	4000	1.7kg
KTL-015-07	19.2	2.8	0.8							3500	2.7kg
KTL-015-08	19.2	4.8	0.5							3000	1.3kg
KTL-015-09	19.2	4.8	0.8							3500	2.9kg
KTL-015-10	21.0	6.3	0.8							3500	2.5kg
KTL-015-11	22.5	2.8	0.5	13.7	5.4	3.5	12~10 (2.63~6.64)	24A	Yellow	3000	1.9kg
KTL-015-12	22.5	2.8	0.8							3000	1.9kg
KTL-015-13	23.0	4.8	0.5							3000	2.1kg
KTL-015-14	23.0	4.8	0.8							3000	2.1kg
KTL-015-15	24.0	6.3	0.8							2000	2.0kg

Quick Disconnect

(Female)

SPECIFICATION

Brass
Tin Plated
P.V.C. Insulation



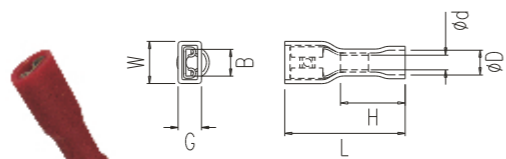
T=Mating Tab Thickness



Part No.	L	B	T	H	øD	ød	Wire Size AWG(mm ²)	Current Rating	Insulation Color	Qty/Box	Weight/Box
KTL-016-01	19.0	3.2	0.5	10.0	4.0	1.7	22~16 (0.25~1.65)	10A	Red	4000	1.6kg
KTL-016-02	19.0	3.2	0.8							3000	1.3kg
KTL-016-03	19.0	5.0	0.5							4000	1.2kg
KTL-016-04	19.0	5.0	0.8							3500	1.9kg
KTL-016-05	21.0	6.6	0.8							3000	2.4kg
KTL-016-06	19.0	3.2	0.5	10.0	4.3	2.3	16~14 (1.04~2.63)	15A	Blue	3000	1.4kg
KTL-016-07	19.0	3.2	0.8							3500	1.7kg
KTL-016-08	19.0	5.0	0.5							3000	2.0kg
KTL-016-09	19.0	5.0	0.8							3000	1.9kg
KTL-016-10	21.0	6.6	0.8							2500	2.2kg
KTL-016-11	22.5	3.0	0.5	13.7	5.4	3.5	12~10 (2.63~6.64)	24A	Yellow	2000	1.5kg
KTL-016-12	22.5	3.0	0.8							2000	1.5kg
KTL-016-13	23.0	5.0	0.5							2000	1.7kg
KTL-016-14	23.0	5.0	0.8							2000	1.7kg
KTL-016-15	25.0	6.6	0.8							1800	2.2kg

Quick Disconnect

(Female - Fully Insulated)



SPECIFICATION

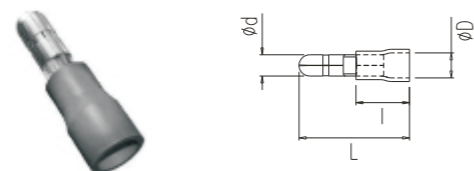
Brass
Tin Plated
P.V.C. Insulation

Part No.	L	B	W	T	H	G	øD	ød	Wire Size AWG(mm²)	Current Rating	Insulation Color	Qty/Box	Weight/Box
KTL-017-01	20.0	3.2	5.8	0.5	10.5	4.3	4.0	1.7	22~16 (0.25~1.65)	10A	Red	2000	1.6kg
KTL-017-02	20.0	3.2	5.8	0.8	10.5	4.3						3000	1.6kg
KTL-017-03	20.0	5.0	7.5	0.5	10.0	4.7						1500	1.3kg
KTL-017-04	20.0	5.0	7.7	0.8	10.0	5.2						2500	2.0kg
KTL-017-05	22.0	6.6	9.7	0.8	10.0	6.0						1700	2.0kg
KTL-017-06	20.0	3.2	5.6	0.5	11.0	5.5	4.3	2.3	16~14 (1.04~2.63)	15A	Blue	1500	1.2kg
KTL-017-07	20.0	3.2	5.6	0.8	11.0	5.5						1500	1.2kg
KTL-017-08	20.0	5.0	7.5	0.5	10.5	5.5						1000	1.0kg
KTL-017-09	20.0	5.0	7.8	0.8	10.5	5.5						2000	1.7kg
KTL-017-10	22.0	6.6	9.3	0.8	10.5	6.0						1700	2.0kg
KTL-017-11	20.0	3.0	5.8	0.5	11.0	6.4	5.4	3.5	12~10 (2.63~6.64)	24A	Yellow	1500	1.4kg
KTL-017-12	20.0	3.0	5.8	0.8	11.0	6.4						1500	1.4kg
KTL-017-13	21.5	5.0	7.8	0.5	11.0	6.4						1000	1.2kg
KTL-017-14	21.5	5.0	7.8	0.8	11.0	6.4						1000	1.2kg
KTL-017-15	23.0	6.6	9.7	0.8	11.0	6.4						1200	1.7kg

T=Mating Tab Thickness

Bullet

(Male)



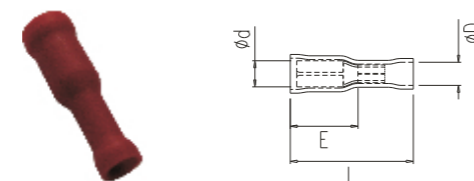
SPECIFICATION

Brass
Tin Plated
P.V.C. Insulation

Part No.	ød	L	I	øD	Wire Size AWG(mm²)	Current Rating	Insulation Color	Qty/Box	Weight/Box
KTL-019-01	4.00	21.0	10.0	4.0	22~16 (0.25~1.65)	10A	Red	3600	2.4kg
KTL-019-02	4.95							3000	2.1kg
KTL-019-03	4.00							3200	2.2kg
KTL-019-04	5.00	23.5	13.0	5.5	16~14 (1.04~2.63)	15A	Blue	2500	2.0kg
KTL-019-05	3.85							1500	1.5kg
KTL-019-06	5.00							2000	2.0kg

Bullet

(Female)

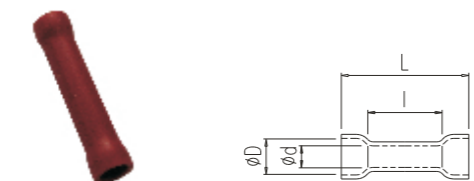


SPECIFICATION

Brass
Phosphor Bronze
P.V.C. Insulation

Part No.	ød	L	I	øD	Wire Size AWG(mm²)	Current Rating	Insulation Color	Qty/Box	Weight/Box
KTL-020-01	4.00	23.0	13.0	4.0	22~16 (0.25~1.65)	10A	Red	1800	2.0kg
KTL-020-02	4.85							1500	1.3kg
KTL-020-03	4.00							1600	1.7kg
KTL-020-04	5.00	24.0	14.0	5.5	16~14 (1.04~2.63)	15A	Blue	1300	1.9kg
KTL-020-05	3.85							1000	1.2kg
KTL-020-06	5.00							1000	1.5kg

Butt Splices

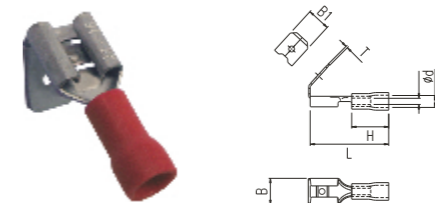


SPECIFICATION

Electrolytic Copper Tube
Tin Plated
P.V.C. Insulation

Part No.	ød	L	I	øD	Wire Size AWG(mm²)	Current Rating	Insulation Color	Qty/Box	Weight/Box
KTL-021-01	1.9	23.7	15.0	4.0	22~16 (0.25~1.65)	19A	Red	2000	1.8kg
KTL-021-02	2.4	23.7	15.0	4.5	22~16 (0.25~1.65)	27A	Blue	1500	1.6kg
KTL-021-03	4.0	25.7	15.0	6.8	22~16 (0.25~1.65)	48A	Yellow	1500	1.6kg

Piggyback Connectors

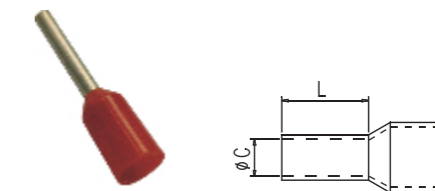


SPECIFICATION

Brass
Tin Plated
P.V.C. Insulation

Part No.	B	B1	L	ød	øD	H	T	Wire Size AWG(mm²)	Current Rating	Qty/Box	Weight/Box
KTL-025-01	6.8	6.3	22.0	1.8	3.9	10.0	0.8	18~16 (0.75~1.25)	10A	1000	1.3kg
KTL-025-02	6.8	6.3	22.0	2.3	4.2	10.0	0.8	16~14 (1.25~2.0)	15A	1000	1.4kg
KTL-025-03	6.8	6.3	25.5	3.5	5.5	13.5	0.8	12~10 (2.63~6.64)	24A	1000	1.5kg

Cord End Terminals



SPECIFICATION

Electrolytic Copper
Nylon 66
Tin Plated

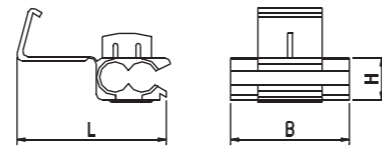
French Style		German Style		L	øC	Conductor	Wire Size AWG(mm²)	Qty/Box
Part No.	Color	Part No.	Color					
KTL-F26-01	Violet	KTL-G26-01	Light Blue	6	0.8	1.9	0.25	1000
KTL-F26-02	Violet	KTL-G26-02	Light Blue	8				1000
KTL-F26-03	Pink	KTL-G26-03	Turquoise	6				1000
KTL-F26-04	Pink	KTL-G26-04	Turquoise	8	0.8	1.9	0.34	1000
KTL-F26-05	White	KTL-G26-05	Light Blue	6				500
KTL-F26-06	White	KTL-G26-06	Light Blue	8				500
KTL-F26-07	White	KTL-G26-07	Light Blue	10	1.0	2.6	0.5	500
KTL-F26-08	Blue	KTL-G26-08	White	6				500
KTL-F26-09	Blue	KTL-G26-09	White	8				500
KTL-F26-10	Blue	KTL-G26-10	White	10	1.2	2.8	0.75	500
KTL-F26-11	Blue	KTL-G26-11	White	12				500
KTL-F26-12	Red	KTL-G26-12	Yellow	6				500
KTL-F26-13	Red	KTL-G26-13	Yellow	8	1.4	3.0	1.0	500
KTL-F26-14	Red	KTL-G26-14	Yellow	10				500
KTL-F26-15	Red	KTL-G26-15	Yellow	12				500
KTL-F26-16	Black	KTL-G26-16	Red	8	1.7	3.5	1.5	500
KTL-F26-17	Black	KTL-G26-17	Red	10				500
KTL-F26-18	Black	KTL-G26-18	Red	12				500
KTL-F26-19	Black	KTL-G26-19	Red	18	2.3	4.2	2.5	500
KTL-F26-20	Grey	KTL-G26-20	Blue	8				500
KTL-F26-21	Grey	KTL-G26-21	Blue	10				500
KTL-F26-22	Grey	KTL-G26-22	Blue	12	2.8	4.8	4.0	500
KTL-F26-23	Grey	KTL-G26-23	Blue	18				500
KTL-F26-24	Orange	KTL-G26-24	Grey	10				500
KTL-F26-25	Orange	KTL-G26-25	Grey	12	3.5	6.3	6.0	500
KTL-F26-26	Orange	KTL-G26-26	Grey	18				500
KTL-F26-27	Green	KTL-G26-27	Black	12				500
KTL-F26-28	Green	KTL-G26-28	Black	18	4.5	7.6	10	500
KTL-F26-29	Brown	KTL-G26-29	Ivory	12				500
KTL-F26-30	Brown	KTL-G26-30	Ivory	18				500
KTL-F26-31	Ivory	KTL-G26-31	Green	12	5.8	8.8	16	500
KTL-F26-32	Ivory	KTL-G26-32	Green	18				500
KTL-F26-33	Black	KTL-G26-33	Brown	16				7.5
KTL-F26-34	Black	KTL-G26-34	Brown	25	500			
KTL-F26-35	Red	KTL-G26-35	Ivory	16	8.3	12.7	35	
KTL-F26-36	Red	KTL-G26-36	Ivory	18				500
KTL-F26-37	Red	KTL-G26-37	Ivory	25				500
KTL-F26-38	Blue	KTL-G26-38	Olive	20	10.3	15.0	50	100
KTL-F26-39	Blue	KTL-G26-39	Olive	25				100
KTL-F26-40	Yellow	KTL-G26-40	Yellow	20				13.5
KTL-F26-41	Red	KTL-G26-41	Red	25	100			
KTL-F26-42	Blue	KTL-G26-42	Blue	27	16.5	20.0	120	
KTL-F26-43	Yellow	KTL-G26-43	Yellow	32				19.5

Stripping Quick Splice

(Type CT)

SPECIFICATION

Brass
Tin Plated
Easy Entry
P.V.C. Insulation



Part No.	L	B	H	Wire Size AWG(mm ²)	Insulation Color	Qty/Box	Weight/Box
KTL-028-01	25.0	20.0	8.0	22-18 (0.5-1.5)	Red	4000	1.6kg
KTL-028-02	25.0	20.0	8.0	18-14 (1.5-2.5)	Blue	4000	1.8kg
KTL-028-03	25.0	20.0	8.0		White	3000	1.2kg
KTL-028-04	31.0	20.0	11.0	12-10 (4-6)	Yellow	3000	1.2kg