

LAS1GQ

Metal Push Button



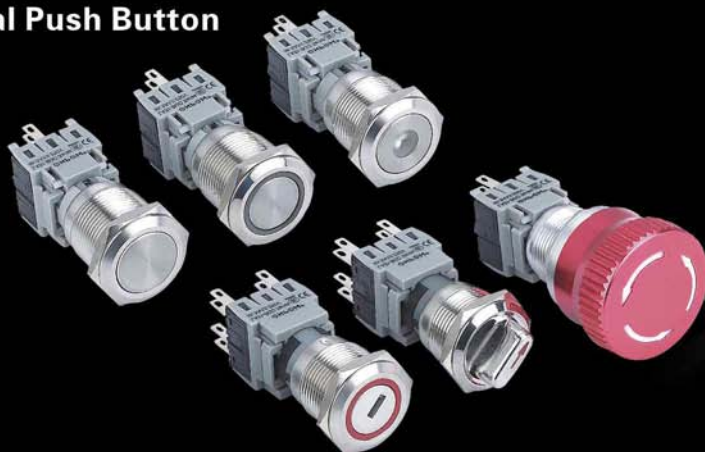
LAS1-AGQ

Metal Push Button



LAS1-BGQ

Metal Push Button



Part-number Description

LAS1 - ★ ☆ - □ ■ / ◇ / ◆ ● / △ / ▲ / ○									
Code of Series	Code name	The Front shape	Contact structure	Operation mode	Lamp type	Operation position of selector and Key-lock type	Lamp color	Lamp voltage	The Crust Material
	GQ AGQ BGQ	H High Round PF Super flat head+ flat actuator PH Super flat head+ high actuator No letter here for selector switch, key lock switch and emergency stop switch	11 1NO1NC 22 2NO2NC 33 3NO3NC See the detailed description which are available	Z Latching type X Selector type Y Key-lock type TS Emergency stop No letter means momentary	D Dot E Ring	◆ Operation position of selector and Key-lock type 2 Two position 3 Three position ● Operation type of selector and Key-lock type 1 Maintain 2 Half return 3 Return	R Red G Green Y Yellow O Orange B Blue W White	AC/DC 6V AC/DC 12V AC/DC 24V AC/DC 110V AC/DC 220V Other voltage can be made to order	S Stainless steel A Aluminium alloy(Black) T Aluminium alloy(White) N Nickel-plated brass

Note: Please read the catalog carefully, and choose the right part-number according to the sign.

LAS1GQ,LAS1-BGQ Switching Operation

Rated Insulation Voltage Ui		250V			
Thermal Current Ith		5A			
Rated voltage		12V	24V	110V	220V
Rated Operation Current	AC 50/60Hz	Resistive load	—	—	5A 3A
		Inductive load	—	—	3A 2A
	DC	Resistive load	5A	5A	1A 0.5A
		Inductive load	2A	2A	0.2A 0.1A
Contact material		Silver Alloy			

Minimum load: 3V AC/DC,5mA (Reference)
Application scope depends on operating environment and load type

LAS1-AGQ Switching Operation

Rated Insulation Voltage Ui		250V			
Thermal Current Ith		5A			
Rated voltage		12V	24V	110V	220V
Rated Operation Current	AC 50/60Hz	Resistive load	—	—	1A 0.5A
		Inductive load	—	—	0.7A 0.5A
	DC	Resistive load	1A	1A	0.2A —
		Inductive load	0.7A	0.7A	0.1A —
Contact material		Silver Alloy			

Minimum load: 3V AC/DC,5mA (Reference)
Application scope depends on operating environment and load type

Standard and Certificate

Standard	Certification mark	Certification Authority/Number
UL508		UL/E254053 E344706
EN61058		VDE/40001664
GB14048.5-2008		CCC/2011010305467129
EN61058-1:2002+A2:2008		VOV/VT11018806
EN60947-1:2004		CTS/CTS070706-01006-E

Performance Characteristic

Operating Temp	-25°C~+55°C (Non freezing) Keep the switch air circulating well
Operating Humidity	45~85%RH(Non condensing)
Contact Resistance	≤50mΩ
Insulation Resistance	≥1000MΩ
Max. withstanding voltage	2000V, AC50Hz, 5s
Vibration resistance	50Hz, amplitude about 1.2mm
Shock resistance	> 10g
Solder resistance	320°C (or 30W soldering iron) no more than 2s

Terminal Description

LAS1-GQ

1, 2 are normal closed(NC)
3, 4 are normal opened(NO)
+, - are lamp terminals, the standard LED terminals have no difference of anode and cathode;
The lamp and switch are relatively independent and can use switch or peripheral circuit to control the lamp state

LAS1-AGQ

Two sets at most
C1NO1NC1 and C2NO2NC2 are one set respectively. C is common used, NO is normal opened, NC is normal closed;
+- are lamp terminals, the standard LED have no difference of anode and cathode;
Lamp and switch are relatively independent and can use switch or peripheral circuit to control the lamp state.

LAS1-BGQ

1,2,3,4 are one set;1,2 are normal closed(NC);
3,4 are normal opened(NO).The standard LED terminals have no difference of anode and cathode.
The lamp and switch are relatively independent and can use switch or peripheral circuit to control the lamp state.

Lamp Ratings

Lamp Type	LED lamp(AC/DC)
LED Color	
Life	40000 hours (Reference)
Rated Voltage	AC/DC6V, AC/DC12V, AC/DC110V, AC/DC24V, AC/DC36V, AC/DC220V
Rated Current	About 15mA; About 2mA
Dropping Way	Inner resistor; Outer resistor to 6V LED
Lamp Circuit Diagram	Using AC/DC LED lamp, the terminals have no difference of anode and cathode: Using inner resistor, do not need connect outer resistor.
Note: DC LED and other voltage can be made to order.	

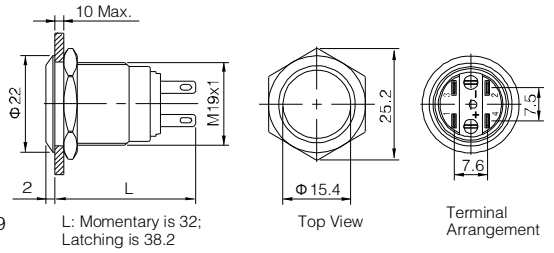
Switching Operation

Type	C	Za
Diagram		
Sign		



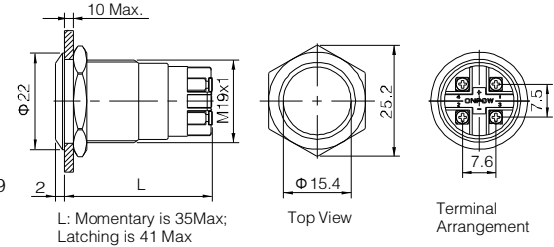
LAS1GQ-11■/○

- ◎ 19mm Diameter
- ◎ Switch Rating: Ith:5A, Ui:250V
- ◎ Contact Configuration: 1NO1NC
- ◎ Operation Type(■): Momentary/Latching(Z)
- ◎ The Crust Material(○): Stainless steel(S)/ Aluminium alloy black anodized (A)
- ◎ Terminal Type: Pin terminal(2.8X0.5)
- ◎ IP Degree: IP65(Momentary can be made IP67),IK09



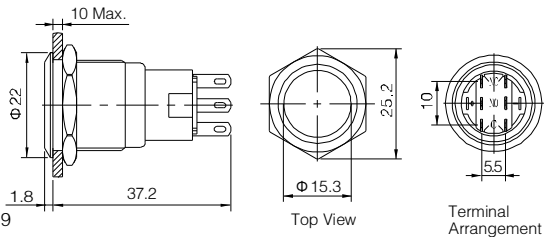
LAS1GQ-11■/L/S

- ◎ 19mm Diameter
- ◎ Switch Rating: Ith:5A, Ui:250V
- ◎ Contact Configuration: 1NO1NC
- ◎ Operation Type(■): Momentary/Latching(Z)
- ◎ The Crust Material: Stainless steel
- ◎ Terminal Type: Screw terminal
- ◎ IP Degree: IP65(Momentary can be made IP67),IK09



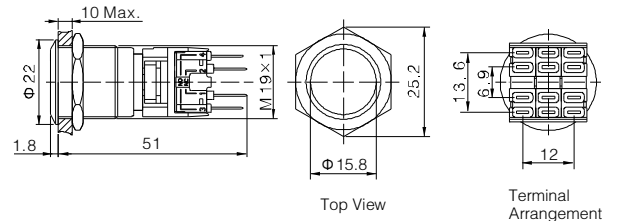
LAS1-AGQ-□■/○

- ◎ 19mm Diameter
- ◎ Switch Rating: Ith:5A, Ui:250V
- ◎ Contact Configuration(□): 1NO1NC(11) / 2NO2NC(22)
- ◎ Operation Type(■): Momentary/Latching(Z)
- ◎ The Crust Material(○): Stainless steel(S) / Nickel-plated brass(N) / Black anodized aluminium alloy(A)
- ◎ Terminal Type: Pin terminal(2.8X0.5)
- ◎ IP Degree: IP65(Momentary can be made IP67),IK09



LAS1-BGQ-□■

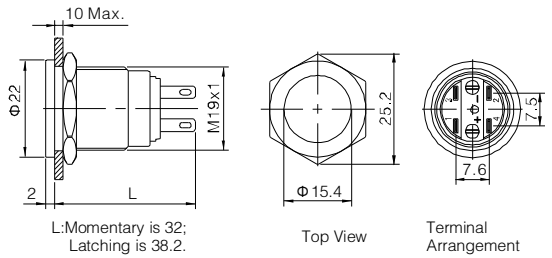
- ◎ 19mm Diameter
- ◎ Combined Structure
- ◎ Switch Rating: Ith:5A, Ui:250V
- ◎ Contact Configuration(□): 1NO1NC(11)/ 2NO2NC(22)/3NO3NC(33)
- ◎ Operation Type(■): Momentary/Latching(Z)
- ◎ The Crust Material: Stainless steel
- ◎ Terminal Type: Pin terminal(2.8X0.5)
- ◎ IP Degree: IP65,IK09



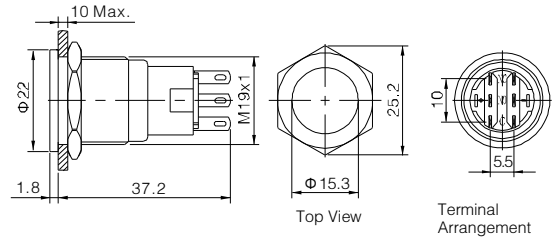
LAS1GQ-11■/○ LAS1GQ-11■/L		Material	Button	Stainless steel/ Black anodized aluminium alloy	LAS1-AGQ-□■/○ LAS1-BGQ-□■		Material	Button	Stainless steel/ Black anodized aluminium alloy
Switching	Za(double-break fast-motion changeover contact)		Body	Stainless steel/ Black anodized aluminium alloy	Switching	Za(double-break fast-motion changeover contact)(AGQ)		Body	Stainless steel/Nickel-plated brass/ Black anodized aluminium alloy
	Panel Thickness		1 ~ 10mm <th>Base</th> <td>PA/PC</td> <th>Panel Thickness</th> <td>1 ~ 10mm</td> <th>Base</th> <td>PBT/PA</td>	Base		PA/PC		Panel Thickness	1 ~ 10mm
Operation Pressure	About 4N	Operation Pressure	3~5N(LAS1-AGQ)						
Operation Travel	About 2.5mm	Operation Pressure	5.5~8N(LAS1-BGQ)						
Mechanical Life	1,000,000 cycles	Operation Travel	About 3.1mm						
Electrical Life	50,000 cycles	Mechanical Life	1,000,000 cycles						
Torque	0.8Nm	Electrical Life	50,000 cycles						
		RoHS	Made to order			RoHS	Made to order		



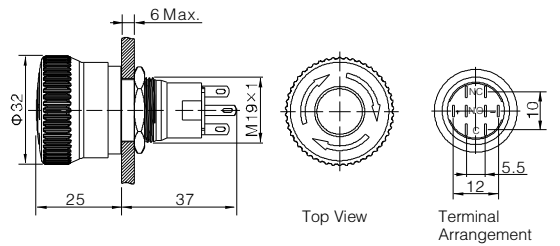
- ⊙ 19mm Diameter
- ⊙ Switch Rating: Ith:5A, Ui:250V
- ⊙ Contact Configuration: 1NO1NC
- ⊙ Operation Type(■): Momentary/Latching(Z)
- ⊙ The Crust Material: Stainless steel
- ⊙ Terminal Type: Pin terminal(2.8X0.5)
- ⊙ IP Degree: IP65(Momentary can be made IP67),IK09



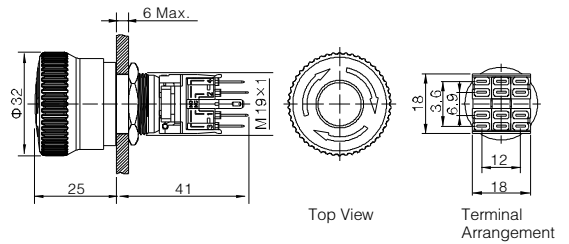
- ⊙ 19mm Diameter
- ⊙ Switch Rating: Ith:5A, Ui:250V
- ⊙ Contact Configuration(□): 1NO1NC(11) / 2NO2NC(22)
- ⊙ Operation Type(■): Momentary/Latching((Z)
- ⊙ The Crust Material(⊙): Stainless steel(S) / Nickel-plated brass(N)
- ⊙ Terminal Type: Pin terminal(2.8X0.5)
- ⊙ IP Degree: IP65(Momentary can be made IP67),IK09



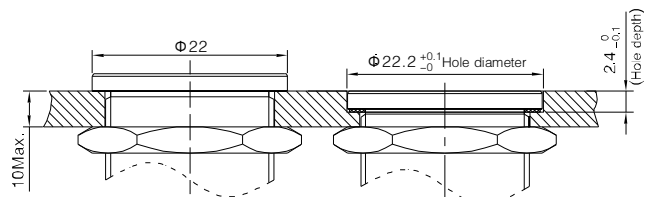
- ⊙ 19mm Diameter
- ⊙ Switch Rating: Ith:5A, Ui:250V
- ⊙ Contact Configuration(□): 1NO1NC(11) / 2NO2NC(22)
- ⊙ Operation Type: Push-lock Turn-reset
- ⊙ The Crust Material: Aluminium Alloy
- ⊙ Terminal Type: Pin terminal(2.8X0.5)
- ⊙ IP Degree: IP65,IK02



- ⊙ 19mm Diameter
- ⊙ Combined Structure
- ⊙ Switching Rating: Ith:5A, Ui:250V
- ⊙ Contact Configuration(□): 1NO1NC(11) / 2NO2NC(22) / 3NO3NC(33)
- ⊙ Operation Type: Push-lock Turn-reset
- ⊙ The Crust Material: Aluminium Alloy
- ⊙ Terminal Type: Pin terminal(2.8X0.5)
- ⊙ IP Degree: IP65,IK02



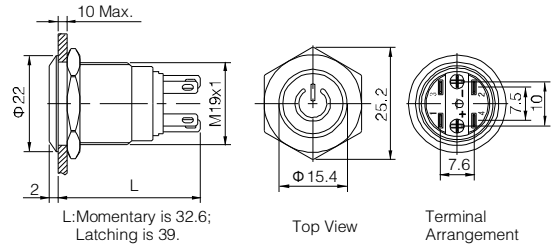
Installation of LAS1 super flat switch



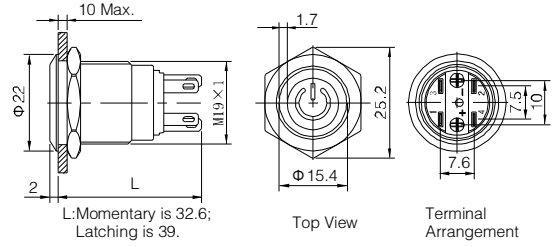
LAS1GQPF-11■/⊙ LAS1-AGQPF-□■/⊙		Material	Button	Stainless steel	LAS1-AGQ-□TS LAS1-BGQ-□TS		Material	Button	Aluminium alloy
Switching	Za(double-break fast-motion changeover contact)(S1GQ)		Body	Stainless steel/Nickel-plated brass	Switching	C(single-break fast-motion changeover contact)(AGQ)		Body	Aluminium alloy
Switching	C(single-break fast-motion changeover contact)(AGQ)		Base	PA/PC	Switching	Za(double-break fast-motion changeover contact)(BGQ)		Base	PBT/PA
Operation Pressure	About 4N(LAS1GQ)	Operation Pressure	3~5N(LAS1-AGQ)	Operation Pressure	3~5N(LAS1-AGQ)				
Operation Pressure	3~5N(LAS1-AGQ)	Operation Pressure	5.5~8N(LAS1-BGQ)	Operation Pressure	5.5~8N(LAS1-BGQ)				
Operation Travel	About 2.5mm(LAS1GQ)	Operation Travel	About 3.1mm(LAS1-AGQ)	Operation Travel	About 3.1mm				
Operation Travel	About 3.1mm(LAS1-AGQ)	Operation Travel		Torque	0.8Nm				
Panel Thickness	1 ~ 10mm	Panel Thickness	1 ~ 10mm(LAS1-AGQ)	Panel Thickness	1 ~ 6mm(LAS1-BGQ)				
Mechanical Life	1,000,000 cycles	Mechanical Life	200,000 cycles	Mechanical Life	200,000 cycles				
Electrical Life	50,000 cycles	Electrical Life	50,000 cycles	Electrical Life	50,000 cycles				
Torque	0.8Nm	RoHS	Made to order	RoHS	Made to order				



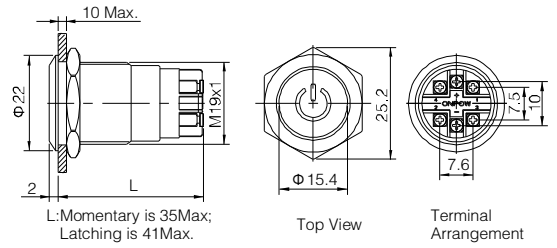
- Indicator part number: LAS1GQ-DT/Δ/▲/○
- Φ 19mm Diameter
- Switch Rating: Ith:5A, Ui:250V
- Contact Configuration: 1NO1NC
- Operation Type(■): Momentary / Latching(Z)
- LED Color(Δ): R G Y O B W
- LED Voltage(▲): 6V/12V/24V/110V/220V
- The Crust Material: Stainless steel
- Terminal Type: Pin terminal(2.8X0.5)
- IP Degree: IP65(Momentary can be made IP67),IK09



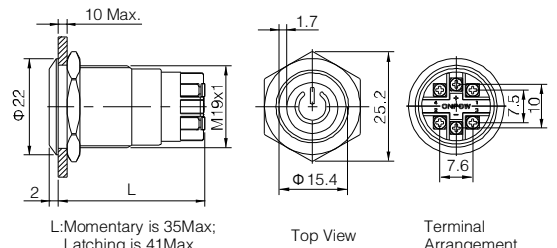
- Indicator part number: LAS1GQ-ET/Δ/▲/○
- Φ 19mm Diameter
- Switch Rating: Ith:5A, Ui:250V
- Contact Configuration: 1NO1NC
- Operation Type(■): Momentary/ Latching(Z)
- LED Color(Δ): R G Y O B W
- LED Voltage(▲): 6V/12V/24V/110V/220V
- The Crust Material: Stainless steel
- Terminal Type: Pin terminal(2.8X0.5)
- IP Degree: IP65(Momentary can be made IP67),IK09



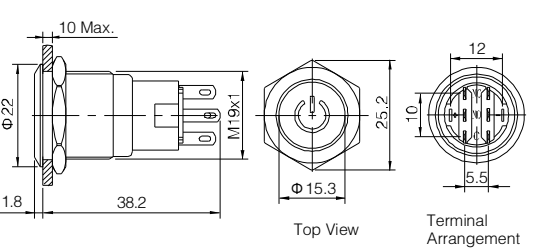
- Indicator part number: LAS1GQ-DT/L/Δ/▲/○
- Φ 19mm Diameter
- Switch Rating: Ith:5A, Ui:250V
- Contact Configuration: 1NO1NC
- Operation Type(■): Momentary/ Latching(Z)
- LED Color(Δ): R G Y O B W
- LED Voltage(▲): 6V/12V/24V/110V/220V
- The Crust Material: Stainless steel
- Terminal Type: Screw terminal
- IP Degree: IP65(Momentary can be made IP67),IK09



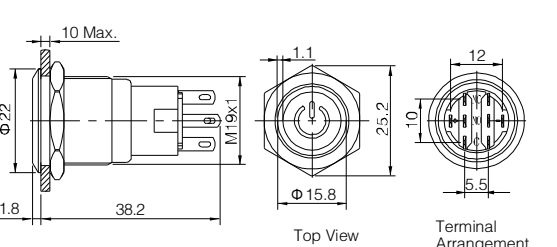
- Indicator part number: LAS1GQ-ET/L/Δ/▲/○
- Φ 19mm Diameter
- Switch Rating: Ith:5A, Ui:250V
- Contact Configuration: 1NO1NC
- Operation Type(■): Momentary/ Latching(Z)
- LED Color(Δ): R G Y O B W
- LED Voltage(▲): 6V/12V/24V/110V/220V
- The Crust Material: Stainless steel
- Terminal Type: Screw terminal
- IP Degree: IP65(Momentary can be made IP67),IK09



- Indicator part number: LAS1-AGQ-DT/Δ/▲/○
- Φ 19mm Diameter
- Switch Rating: Ith:5A, Ui:250V
- Contact Configuration(□): 1NO1NC(11) / 2NO2NC(22)
- Operation Type(■): Momentary/ Latching(Z)
- LED Color(Δ): R G Y O B W
- LED Voltage(▲): 6V/12V/24V/110V/220V
- The Crust Material: Stainless steel (S)/ Nickel-plated brass(N)
- Terminal Type: Pin terminal(2.8X0.5)
- IP Degree: IP65(Momentary can be made IP67),IK09



- Indicator part number: LAS1-AGQ-ET/Δ/▲/○
- Φ 19mm Diameter
- Switch Rating: Ith:5A, Ui:250V
- Contact Configuration(□): 1NO1NC(11) / 2NO2NC(22)
- Operation Type(■): Momentary/ Latching(Z)
- LED Color(Δ): R G Y O B W
- LED Voltage(▲): 6V/12V/24V/110V/220V
- The Crust Material: Stainless steel (S)/ Nickel-plated brass(N)
- Terminal Type: Pin terminal(2.8X0.5)
- IP Degree: IP65(Momentary can be made IP67),IK09

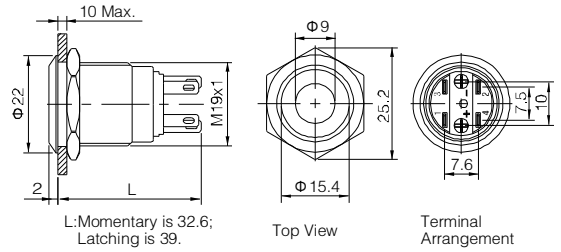


LAS1GQ-11 DT/Δ/▲/S LAS1GQ-11 ET/Δ/▲/S LAS1GQ-11 DT/L/Δ/▲/○ LAS1GQ-11 ET/L/Δ/▲/○		Material	Button	Stainless steel	LAS1-AGQ-□ DT/Δ/▲/S LAS1-AGQ-□ ET/Δ/▲/S		Material	Button	Stainless steel
Switching	Za(double-break fast-motion changeover contact)	Operation Pressure	About 4N		Switching	C(single-break fast-motion changeover contact)(AGQ)	Operation Pressure	3~5N	
Panel Thickness	1 ~ 10mm	Operation Travel	About 2.5mm		Panel Thickness	1 ~ 10mm	Operation Travel	About 3.1mm	
Mechanical Life	1,000,000 cycles				Mechanical Life	1,000,000 cycles			
Electrical Life	50,000 cycles				Electrical Life	50,000 cycles			
Torque	0.8Nm				Torque	0.8Nm			
		RoHS	Made to order				RoHS	Made to order	



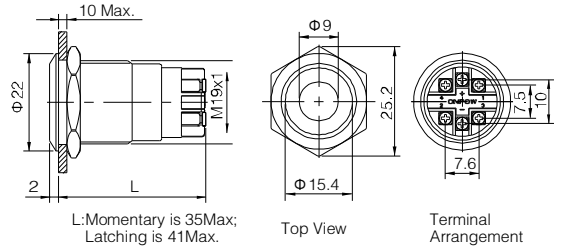
LAS1GQ-11 ■ D/Δ/▲/◎

- ◎ Indicator part number: LAS1GQ-D/Δ/▲/◎
- ◎ Φ 19mm Diameter
- ◎ Switch Rating: Ith:5A, Ui: 250V
- ◎ Contact Configuration: 1NO1NC
- ◎ Operation Type(■): Momentary / Latching(Z)
- ◎ LED Color(Δ): **R G Y O B W**
- ◎ LED Voltage(▲): 6V/12V/24V/110V/220V
- ◎ The Crust Material(◎): Stainless steel(S) / Black anodized aluminium alloy(A)
- ◎ Terminal Type: Pin terminal(2.8X0.5)
- ◎ IP Degree: IP65(Momentary can be made IP67),IK09



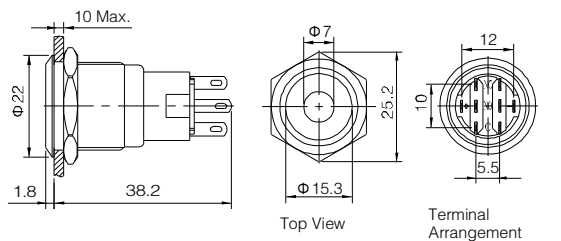
LAS1GQ-11 ■ D/L/Δ/▲/S

- ◎ Indicator part number: LAS1GQ-D/L/Δ/▲/◎
- ◎ Φ 19mm Diameter
- ◎ Switch Rating: Ith:5A, Ui:250V
- ◎ Contact Configuration: 1NO1NC
- ◎ Operation Type(■): Momentary/ Latching(Z)
- ◎ LED Color(Δ): **R G Y O B W**
- ◎ LED Voltage(▲): 6V/12V/24V/110V/220V
- ◎ The Crust steel
- ◎ Terminal Type: Screw terminal
- ◎ IP Degree: IP65(Momentary can be made IP67),IK09



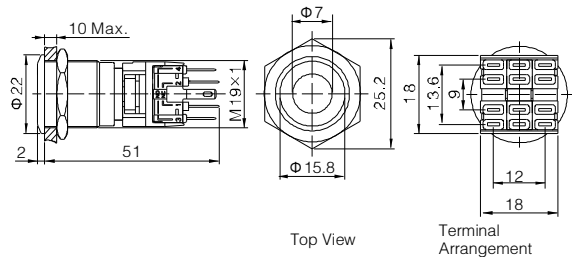
LAS1-AGQ-□ ■ D/Δ/▲/◎

- ◎ Indicator part number: LAS1-AGQ-D/Δ/▲/◎
- ◎ Φ 19mm Diameter
- ◎ Switch Rating: Ith:5A, Ui:250V
- ◎ Contact Configuration(□): 1NO1NC(11) / 2NO2NC(22)
- ◎ Operation Type(■): Momentary/ Latching(Z)
- ◎ LED Color(Δ): **R G Y O B W**
- ◎ LED Voltage(▲): 6V/12V/24V/110V/220V
- ◎ The Crust Material(◎): Stainless steel(S) / Nickel-plated brass(N)Black anodized aluminium alloy(A)
- ◎ Terminal Type: Pin terminal(2.8X0.5)
- ◎ IP Degree: IP67,IK09

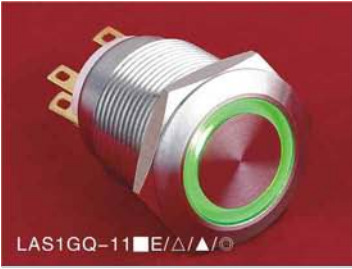


LAS1-BGQ-□ ■ D/Δ/▲/S

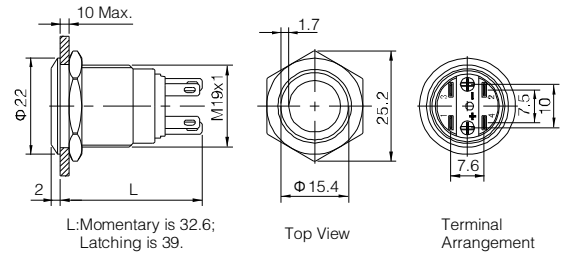
- ◎ Indicator part number: LAS1-BGQ-D/Δ/▲
- ◎ Φ 19mm Diameter
- ◎ Switch Rating: Ith:5A, Ui:250V
- ◎ Contact Configuration(□): 1NO1NC(11)/ 2NO2NC(22)/3NO3NC(33)
- ◎ Operation Type(■): Momentary/ Latching(Z)
- ◎ LED Color(Δ): **R G Y O B W**
- ◎ LED Voltage(▲): 6V/12V/24V/110V/220V
- ◎ The Crust Material: Stainless steel
- ◎ IP Degree: IP65,IK09



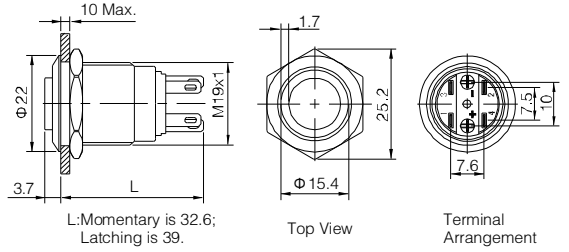
LAS1GQ-11 ■ D/Δ/▲/◎ LAS1GQ-11 ■ D/L/Δ/▲		Material	Button	Stainless steel/ Black anodized aluminium alloy	LAS1-AGQ-□ ■ D/Δ/▲/◎ LAS1-BGQ-□ ■ D/Δ/▲		Material	Button	Stainless steel/ Black anodized aluminium alloy
Switching	Za(double-break fast-motion changeover contact)		Body	Stainless steel/ Black anodized aluminium alloy	Switching	Za(double-break fast-motion changeover contact)(AGQ)		Body	Stainless steel/Nickel-plated brass/ Black anodized aluminium alloy
Panel Thickness	1 ~ 10mm(LAS1GQ)	Operation Pressure	About 4N(LAS1GQ)	Switching	Za(double-break fast-motion changeover contact)(BGQ)	Base	PBT/PA	Operation Pressure	3~5N(LAS1-AGQ)
Mechanical Life	0.8Nm	Operation Travel	About 2.5mm(LAS1GQ)	Panel Thickness	1 ~ 10mm	Operation Pressure		Operation Pressure	5.5~8N(LAS1-BGQ)
Electrical Life	1,000,000 cycles			Mechanical Life	1,000,000 cycles	Operation Travel		Operation Travel	About 3.1mm
Torque	50,000 cycles			Electrical Life	50,000 cycles				
		RoHS	Made to order	Torque	0.8Nm	RoHS	Made to order		



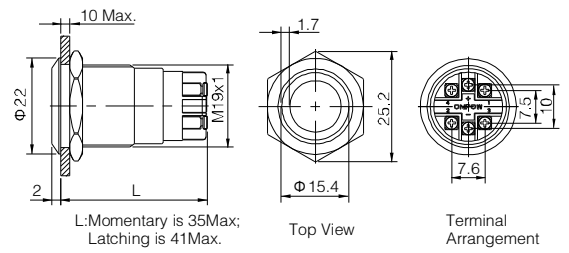
- Indicator part number: LAS1GQ-E/Δ/▲/○
- Φ 19mm Diameter
- Switch Rating: Ith:5A, Ui:250V
- Contact Configuration: 1NO1NC
- Operation Type(■): Momentary / Latching(Z)
- LED Color(Δ): R G Y O B W
- LED Voltage(▲): 6V/12V/24V/110V/220V
- The Crust Material(◎): Stainless steel(S) / Black anodized aluminium alloy(A)
- Terminal Type: Pin terminal(2.8X0.5)
- IP Degree: IP65(Momentary can be made IP67),IK09



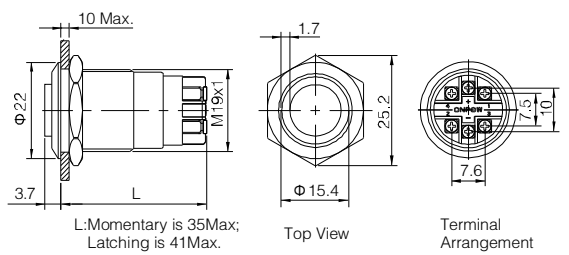
- Indicator part number: LAS1GQH-E/Δ/▲/○
- Φ 19mm Diameter
- Switch Rating: Ith:5A, Ui:250V
- Contact Configuration: 1NO1NC
- Operation Type(■): Momentary / Latching(Z)
- LED Color(Δ): R G Y O B W
- LED Voltage(▲): 6V/12V/24V/110V/220V
- The Crust Material(◎): Stainless steel(S) / Black anodized aluminium alloy(A)
- Terminal Type: Pin terminal(2.8X0.5)
- IP Degree: IP65(Momentary can be made IP67),IK09



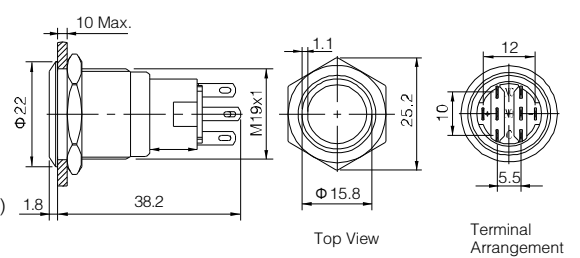
- Indicator part number: LAS1GQ-E/L/Δ/▲/S
- Φ 19mm Diameter
- Switch Rating: Ith:5A, Ui:250V
- Contact Configuration: 1NO1NC
- Operation Type(■): Momentary / Latching(Z)
- LED Color(Δ): R G Y O B W
- LED Voltage(▲): 6V/12V/24V/110V/220V
- The Crust Material: Stainless steel
- Terminal Type: Screw terminal
- IP Degree: IP65(Momentary can be made IP67),IK09



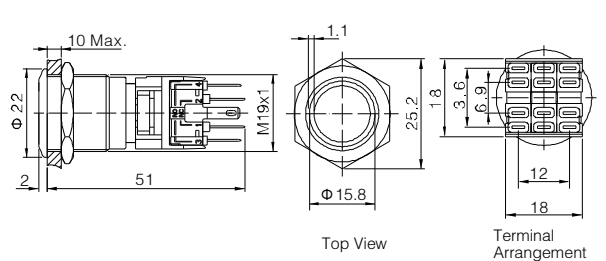
- Indicator part number: LAS1GQH-E/L/Δ/▲/S
- Φ 19mm Diameter
- Switch Rating: Ith:5A, Ui:250V
- Contact Configuration: 1NO1NC
- Operation Type(■): Momentary / Latching(Z)
- LED Color(Δ): R G Y O B W
- LED Voltage(▲): 6V/12V/24V/110V/220V
- The Crust Material: Stainless steel
- Terminal Type: Screw terminal
- IP Degree: IP65(Momentary can be made IP67),IK09



- Indicator part number: LAS1-AGQ-□ E/Δ/▲/○
- Φ 19mm Diameter
- Switch Rating: Ith:5A, Ui:250V
- Contact Configuration(□): 1NO1NC(11)/2NO2NC(22)
- Operation Type(■): Momentary / Latching(Z)
- LED Color(Δ): R G Y O B W
- LED Voltage(▲): 6V/12V/24V/110V/220V
- The Crust Material(◎): Stainless steel(S) / Nickel-plated brass(N)/Black anodized aluminium alloy(A)
- Terminal Type: Pin terminal(2.8X0.5)
- IP Degree: IP65(Momentary can be made IP67),IK09



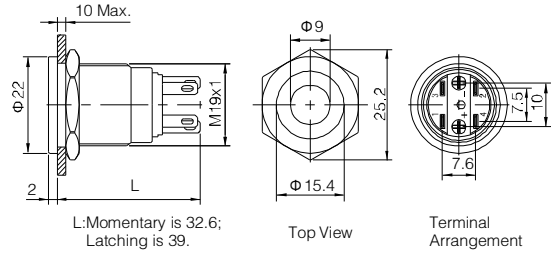
- Indicator part number: LAS1-BGQ-□ E/Δ/▲/S
- Φ 19mm Diameter
- Switch Rating: Ith:5A, Ui:250V
- Contact Configuration(□): 1NO1NC(11) / 2NO2NC(22) / 3NO3NC(33)
- Operation Type(■): Momentary / Latching(Z)
- LED Color(Δ): R G Y O B W
- LED Voltage(▲): 6V/12V/24V/110V/220V
- The Crust Material: Stainless steel
- Terminal Type: Pin terminal(2.8X0.5)
- IP Degree: IP65,IK09



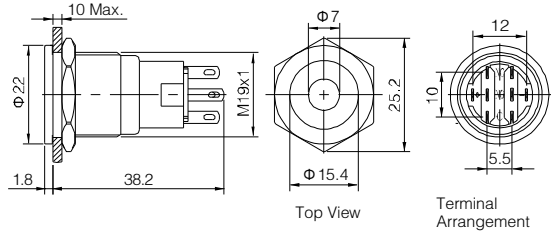
LAS1GQ-11 E/Δ/▲/○ LAS1GQH-11 E/Δ/▲/○ LAS1GQ-11 E/L/Δ/▲/S LAS1GQH-11 E/L/Δ/▲/S		Material	Button	Stainless steel/ Black anodized aluminium alloy	LAS1-AGQ-□ E/Δ/▲/○ LAS1-BGQ-□ E/Δ/▲/S		Material	Button	Stainless steel/ Black anodized aluminium alloy
Switching	Za(double-break fast-motion changeover contact)		Body	Stainless steel/ Black anodized aluminium alloy	Switching	C(Single-break fast-motion changeover contact)(AGQ)		Body	Stainless steel/Nickel-plated brass/ Black anodized aluminium alloy
Panel Thickness	1 ~ 10mm(LAS1GQ)		Base	PA/PC	Switching	Za(double-break fast-motion changeover contact)(BGQ)		Base	PBT/PA
Mechanical Life	1,000,000 cycles		Operation Pressure	About 4N	Panel Thickness	1 ~ 10mm		Operation Pressure	3~5N(LAS1-AGQ)
Electrical Life	50,000 cycles		Operation Travel	About 2.5mm	Mechanical Life	1,000,000 cycles		Operation Pressure	5.5~8N(LAS1-BGQ)
Torque	0.8Nm				Electrical Life	50,000 cycles		Operation Travel	About 3.1mm
			RoHS	Made to order	Torque	0.8Nm		RoHS	Made to order



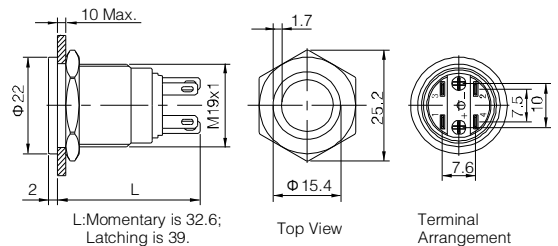
- ⊙ Indicator part number: LAS1GQPF-D/Δ/▲/⊙
- ⊙ Φ19mm Diameter
- ⊙ Switch Rating: Ith:5A, Ui:250V
- ⊙ Contact Configuration: 1NO1NC
- ⊙ Operation Type(■): Momentary / Latching(Z)
- ⊙ LED Color(Δ): R G Y O B W
- ⊙ LED Voltage(▲): 6V/12V/24V/110V/220V
- ⊙ The Crust Material: Stainless steel
- ⊙ Terminal Type: Pin terminal(2.8X0.5)
- ⊙ IP Degree: IP65(Momentary can be made IP67),IK09



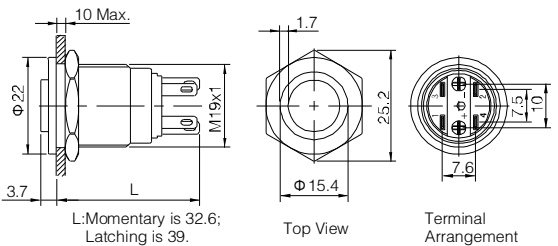
- ⊙ Indicator part number: LAS1-AGQPF-D/Δ/▲/⊙
- ⊙ Φ19mm Diameter
- ⊙ Switch Rating: Ith:5A, Ui:250V
- ⊙ Contact Configuration(□): 1NO1NC(11) / 2NO2NC(22)
- ⊙ Operation Type(■): Momentary / Latching(Z)
- ⊙ LED Color(Δ): R G Y O B W
- ⊙ LED Voltage(▲): 6V/12V/24V/110V/220V
- ⊙ The Crust Material(⊙): Stainless steel(S)/ Nickel-plated brass(N)
- ⊙ Terminal Type: Pin terminal(2.8X0.5)
- ⊙ IP Degree: IP65(Momentary can be made IP67),IK09



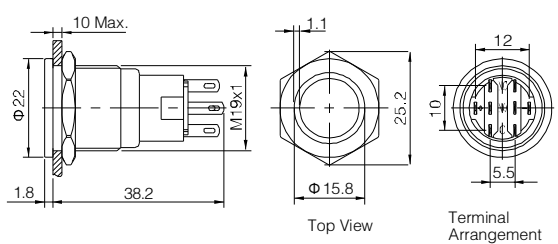
- ⊙ Indicator part number: LAS1GQPF-E/Δ/▲/⊙
- ⊙ Φ19mm Diameter
- ⊙ Switch Rating: Ith:5A, Ui:250V
- ⊙ Contact Configuration: 1NO1NC
- ⊙ Operation Type(■): Momentary / Latching(Z)
- ⊙ LED Color(Δ): R G Y O B W
- ⊙ LED Voltage(▲): 6V/12V/24V/110V/220V
- ⊙ The Crust Material: Stainless steel
- ⊙ Terminal Type: Pin terminal(2.8X0.5)
- ⊙ IP Degree: IP65(Momentary can be made IP67),IK09



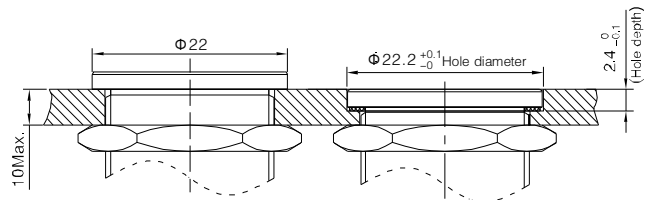
- ⊙ Indicator part number: LAS1GQPH-E/Δ/▲/⊙
- ⊙ Φ19mm Diameter
- ⊙ Switch Rating: Ith:5A, Ui:250V
- ⊙ Contact Configuration: 1NO1NC
- ⊙ Operation Type(■): Momentary / Latching(Z)
- ⊙ LED Color(Δ): R G Y O B W
- ⊙ LED Voltage(▲): 6V/12V/24V/110V/220V
- ⊙ The Crust Material: Stainless steel
- ⊙ Terminal Type: Pin terminal(2.8X0.5)
- ⊙ IP Degree: IP65(Momentary can be made IP67),IK09



- ⊙ Indicator part number: LAS1-AGQPF-E/Δ/▲/⊙
- ⊙ Φ19mm Diameter
- ⊙ Switch Rating: Ith:5A, Ui:250V
- ⊙ Contact Configuration(□): 1NO1NC(11) / 2NO2NC(22)
- ⊙ Operation Type(■): Momentary / Latching(Z)
- ⊙ LED Color(Δ): R G Y O B W
- ⊙ LED Voltage(▲): 6V/12V/24V/110V/220V
- ⊙ The Crust Material(⊙): Stainless steel(S)/ Nickel-plated brass(N)
- ⊙ Terminal Type: Pin terminal(2.8X0.5)
- ⊙ IP Degree: IP65(Momentary can be made IP67),IK09



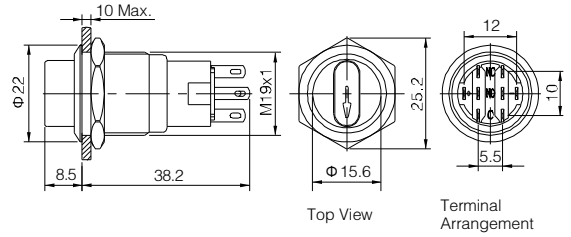
Installation of LAS1 super flat switch



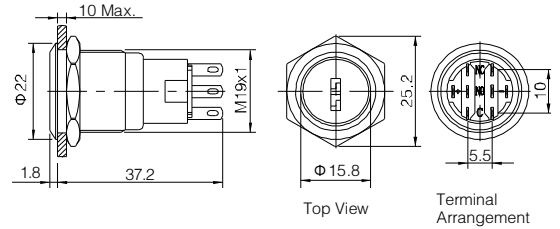
LAS1GQPF-11■D/Δ/▲/S LAS1GQPF-11■E/Δ/▲/S LAS1GQPH-11■E/Δ/▲/S		Material	Button	Stainless steel/ Black anodized aluminium alloy	LAS1-AGQPF-□■D/Δ/▲/⊙ LAS1-AGQPF-□■E/Δ/▲/⊙		Material	Button	Stainless steel
Switching	Za(double-break fast-motion changeover contact)(S1GQ)		Body	Stainless steel/ Black anodized aluminium alloy	Switching	C(Single-break fast-motion changeover contact)		Body	Stainless steel/Nickel-plated brass
	Panel Thickness	1 ~ 10mm	Base	PA/PC		Operation Pressure	3-5N	Base	PBT/PA
Torque	0.8Nm	Operation Pressure	About 4N	Operation Travel	About 2.5mm	Panel Thickness	1 ~ 10mm	Operation Travel	About 3.1mm
Mechanical Life	1,000,000 cycles	Operation Travel	About 2.5mm	Mechanical Life	1,000,000 cycles	Electrical Life	50,000 cycles	Torque	0.8Nm
Electrical Life	50,000 cycles	RoHS	Made to order	Electrical Life	50,000 cycles	RoHS	Made to order		



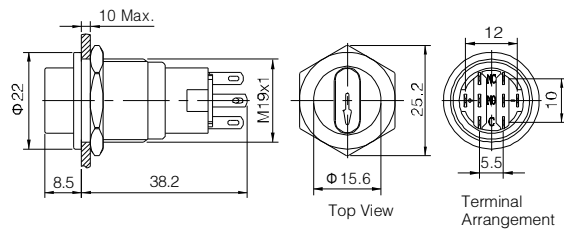
- ⊙ Φ 19mm Diameter
- ⊙ Switch Rating: Ith:5A, Ui:250V
- ⊙ Contact Configuration(□): 1NO1NC(11)/2NO2NC(22)
- ⊙ Operation Position(◆●): 2 positions maintain(21)/ 2 positions return(23) / 3 positions maintain(31)
- ⊙ LED Color(△): R G Y O B W
- ⊙ LED Voltage(▲): 6V/12V/24V/110V/220V
- ⊙ The Crust Material(⊙): Stainless steel(S)/ Nickel-plated brass(N)
- ⊙ Terminal Type: Pin terminal(2.8X0.5)
- ⊙ IP Degree(☆): IP40(IP65 can be made to order),IK02



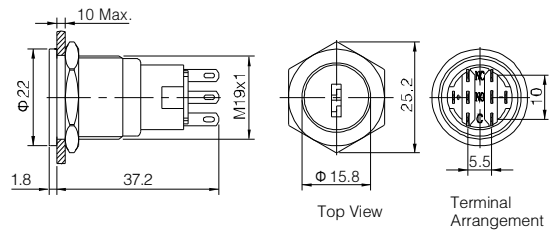
- ⊙ Φ 19mm Diameter
- ⊙ Switch Rating: Ith:5A, Ui:250V
- ⊙ Contact Configuration(□): 1NO1NC(11)/2NO2NC(22)
- ⊙ Operation Position(◆●): 2 positions maintain(21) / 2 positions return(23) / 3 positions maintain(31)
- ⊙ The Crust Material(⊙): Stainless steel(S)/ Nickel-plated brass(N)
- ⊙ Terminal Type: Pin terminal(2.8X0.5)
- ⊙ IP Degree: IP40(IP65 can be made to order),IK02



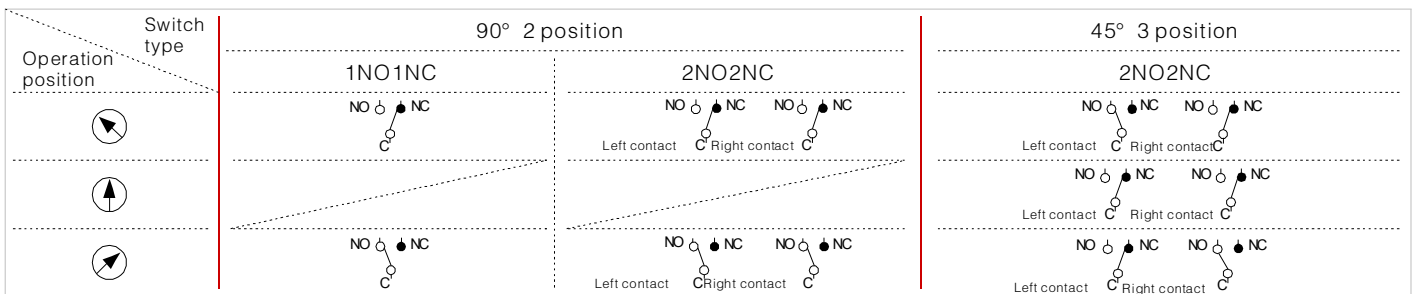
- ⊙ Φ 19mm Diameter
- ⊙ Switch Rating: Ith:5A, Ui:250V
- ⊙ Contact Configuration(□): 1NO1NC(11)/2NO2NC(22)
- ⊙ Operation Position(◆●): 2 positions maintain(21)/ 2 positions return(23) / 3 positions maintain(31)
- ⊙ LED Color(△): R G Y O B W
- ⊙ LED Voltage(▲): 6V/12V/24V/110V/220V
- ⊙ The Crust Material(⊙): Stainless steel(S)/ Nickel-plated brass(N)
- ⊙ Terminal Type: Pin terminal(2.8X0.5)
- ⊙ IP Degree(☆): IP40(IP65 can be made to order),IK02



- ⊙ Φ 19mm Diameter
- ⊙ Switch Rating: Ith:5A, Ui:250V
- ⊙ Contact Configuration(□): 1NO1NC(11)/2NO2NC(22)
- ⊙ Operation Position(◆●): 2 positions maintain(21) / 2 positions return(23) / 3 positions maintain(31)
- ⊙ The Crust Material(⊙): Stainless steel(S)/ Nickel-plated brass(N)
- ⊙ Terminal Type: Pin terminal(2.8X0.5)
- ⊙ IP Degree: IP40(IP65 can be made to order),IK02

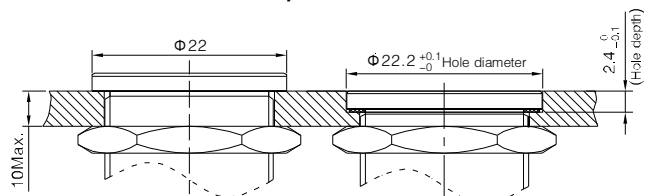


LAS1-AGQ selector switch and keylock switch state chart in operation



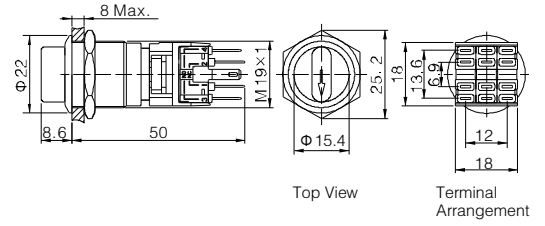
LAS1-AGQ-□X/◆●/△▲/☆/○	Material	Button	Stainless steel
LAS1-AGQ-□Y/◆●/○		Body	Stainless steel
LAS1-AGQP-□X/◆●/△▲/☆/○		Base	PBT/PA
LAS1-AGQP-□Y/◆●/○			
Switching			C(Single-break fast-motion changeover contact)
Panel Thickness			1 ~ 10mm
Mechanical Life			1,000,000 cycles
Electrical Life			50,000 cycles
Torque			0.8Nm
		RoHS	Made to order

Installation of LAS1-AGQ super flat switch

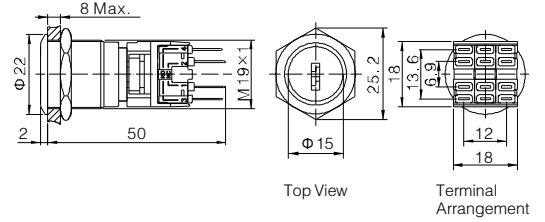




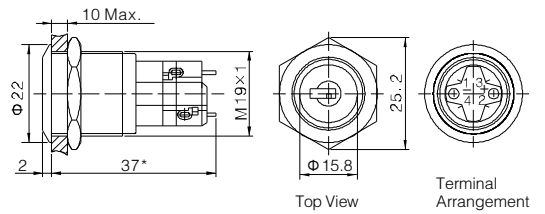
- ⊙ Φ19mm Diameter
- ⊙ Combined Structure
- ⊙ Switch Rating: Ith:5A, Ui:250V
- ⊙ Contact Configuration(□): 1NO1NC(11)/2NO2NC(22) / 3NO3NC(33)
- ⊙ Operation Position(◆): Two Position(2)/Three Position(3)
- ⊙ Operation Type(●): Maintain(1)/Half Return(2)/Return(3)
- ⊙ The Crust Material: Stainless steel
- ⊙ Terminal Type: Pin terminal(2.8X0.5)
- ⊙ IP Degree: IP40,IK02



- ⊙ Φ19mm Diameter
- ⊙ Combined Structure
- ⊙ Switch Rating: Ith:5A, Ui:250V
- ⊙ Contact Configuration(□): 1NO1NC(11)/2NO2NC(22) / 3NO3NC(33)
- ⊙ Operation Position(◆): Two Position(2)/Three Position(3)
- ⊙ Operation Type(●): Maintain(1)/Half Return(2)/Return(3)
- ⊙ The Crust Material: Stainless steel
- ⊙ Terminal Type: Pin terminal(2.8X0.5)
- ⊙ IP Degree: IP40,IK02



- ⊙ Φ19mm Diameter
- ⊙ Switch Rating: Ith:5A, Ui: 250V
- ⊙ Contact Configuration(□): 1NO1NC(11)/2NO2NC(22)
- ⊙ Two position Maintain
- ⊙ The Crust Material: Stainless steel
- ⊙ Terminal Type: Pin terminal
- ⊙ IP Degree: IP40,IK02



Note: The product add one switch unit, the length(*) will add 7.5

LAS1GQ,LAS1-BGQ selector switch and keylock switch state chart in operation

Operation position \ Switch type	90° 2 position			90° 3 position			
	1NO1NC	2NO2NC	3NO3NC	2NO2NC	2NO2NC	2NO2NC	3NO3NC
↻	●● ○ ○	●● ●● ○ ○ ○ ○	●● ●● ●● ○ ○ ○ ○ ○ ○	●● ●● ○ ○ ○ ○	●● ●● ○ ○ ○ ○	●● ●● ○ ○ ○ ○	●● ●● ●● ○ ○ ○ ○ ○ ○
↑	●● ●● ○ ○	●● ●● ●● ○ ○ ○ ○	●● ●● ●● ●● ○ ○ ○ ○ ○ ○	●● ●● ●● ○ ○ ○ ○	●● ●● ●● ○ ○ ○ ○	●● ●● ●● ○ ○ ○ ○	●● ●● ●● ●● ○ ○ ○ ○ ○ ○
↻	●● ●● ○ ○	●● ●● ●● ○ ○ ○ ○	●● ●● ●● ●● ○ ○ ○ ○ ○ ○	●● ●● ●● ○ ○ ○ ○	●● ●● ●● ○ ○ ○ ○	●● ●● ●● ○ ○ ○ ○	●● ●● ●● ●● ○ ○ ○ ○ ○ ○

LAS1-BGQ-□X/◆● LAS1-BGQ-□Y/◆●		Material	Button	Stainless steel	LAS1GQ-□Y/2		Material	Button	Stainless steel/ Black anodized aluminium alloy
			Body	Stainless steel				Body	Stainless steel/ Black anodized aluminium alloy
		Base	PBT/PA			Base	PA/PC		
Switching	Za(double-break fast-motion changeover contact)			Switching	Za(double-break fast-motion changeover contact)				
Panel Thickness	1 ~ 10mm			Panel Thickness	1 ~ 10mm(LAS1GQ)				
Mechanical Life	200,000 cycles			Mechanical Life	1,000,000 cycles				
Electrical Life	50,000 cycles			Electrical Life	50,000 cycles				
Torque	0.8Nm			Torque	0.8Nm				
		RoHS	Made to order			RoHS	Made to order		

LAS1-AGQTRI-COLOR LED PUSH BUTTON SWITCH

Flat actuator+pin terminal+tri-color ring LED



LAS1-AGQ-11 ■E/★RGB/▲/◎

Tri-color Display

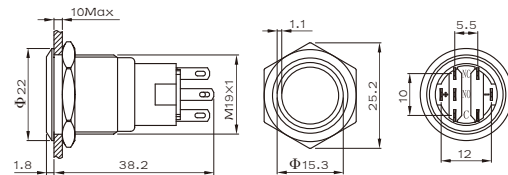
- Operating Type ■:
- Momentary / Latching(Z)
- LED Options ★:
- 41 Tri-color (Common Cathode)
 - 42 Tri-color (Common Anode)
- LED Voltage ▲:
- AC/DC 6V
 - AC/DC 12V
 - AC/DC 24V
- Body ◎:
- S stainless steel
 - A Aluminum(Black)

Specifications

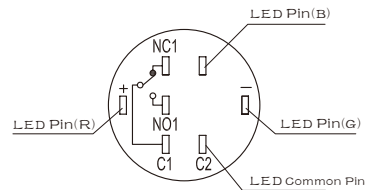
- Panel Cutout: Φ 19mm
 - Contact Configuration: 11 1NO1NC
22 2NO2NC
 - Terminal: Pin(2.8x0.5mm)
 - Switching: C(Signal-break fast-motion contact)
 - Rating: Ith:5A Ui:250V
 - Contact Resistance: $\leq 50m\Omega$
 - Insulation Resistance: $\geq 1000M\Omega$
 - Electrical strength: 1500VAC, 50Hz, 1min
 - Operating Temperature: $-25^{\circ}C \sim +55^{\circ}C$ (No freeze)
 - Mechanical Life: 1,000,000 cycles
 - Electrical Life: 50,000 cycles
 - Panel Thickness: 1 ~ 10mm
 - Torque: About 0.6Nm
 - Actuation Force: About 3N
 - Actuation Travel: About 3.1mm
 - Protection Class: IP65,IK08
 - Contact: Silvery Alloy
 - Actuator:Stainless steel/ Aluminum(Black)
 - Body: Stainless steel/Aluminum(Black)
 - Base: PBT
- made to order.

RoHS

Dimension



Terminal Arrangement



Tri-color Lamp Specification

Lamp Type	Unidirection Tri-color LED
LED Color	R G B
Life	4000hours(Reference)
Rated Voltage	Without Resistor R 1.8V, G 2.8V, B 2.8V With internal resistor: DC6V, DC12V, DC24V
Rated Current	5~15mA
Lamp Circuit Diagram	<p>Common Cathode Common Anode</p> <p>Using unidirection LED lamp, need distinguish anode and cathode, Using inner resistor, do not need connect outer resistor. (Three resistors need connected outside)</p>

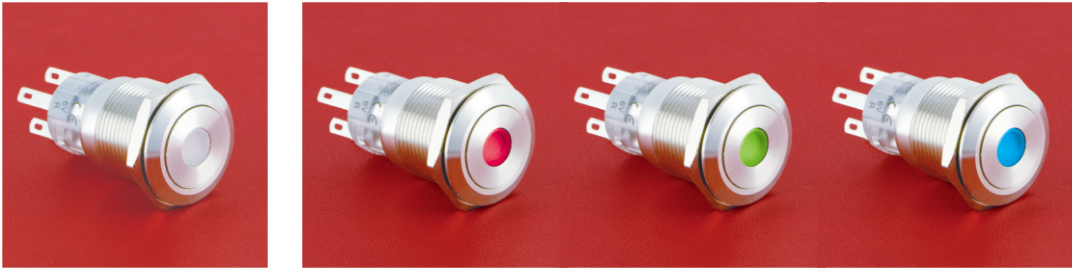
Switch Rating

Rated Insulation Voltage Ui		250V			
Thermal Current Ith		5A 温度不超过最大额定值所允许的电流			
Rated Voltage		12V	24V	110V	220V
Rated Operation Current	AC 50/60Hz	—	—	1A	0.5A
	DC	—	—	0.7A	0.5A
Rated Operation Current	Resistive load	1A	1A	0.2A	—
	Inductive load	0.7A	0.7A	0.1A	—
Contact material		Silver Alloy			

Minimum load: 3VAC/DC,5mA(Reference)
Application scope depends on operating environment and load type

LAS1-AGQTRI-COLOR LED PUSH BUTTON SWITCH

Flat actuator+pin terminal+tri-color dot LED



LAS1-AGQ-11■D/★RGB/▲/S

Tri-color Display

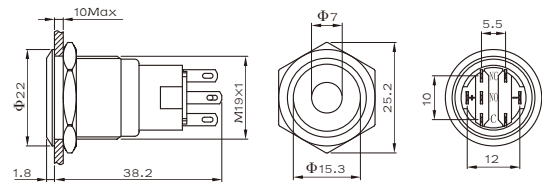
- Operating Type■:
 - Momentary / Latching(Z)
- LED Options★:
 - 41 Tri-color (Common Cathode)
 - 42 Tri-color (Common Anode)
- LED Voltage▲:
 - AC/DC 6V
 - AC/DC 12V
 - AC/DC 24V
- Body◎:
 - S stainless steel

Specifications

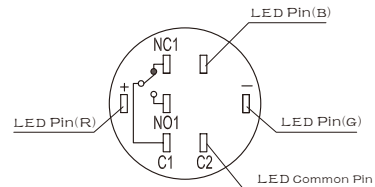
- Panel Cutout: Φ 19mm
 - Contact Configuration: 11 1NO1NC
22 2NO2NC
 - Terminal: Pin(2.8x0.5mm)
 - Switching: C(Singal-break fast-motion contact)
 - Rating: Ith:5A Ui:250V
 - Contact Resistance: $\leq 50m\Omega$
 - Insulation Resistance: $\geq 1000M\Omega$
 - Electrical strength: 1500VAC, 50Hz, 1min
 - Operating Temperature: $-25^{\circ}C \sim +55^{\circ}C$ (No freeze)
 - Mechanical Life: 1,000,000 cycles
 - Electrical Life: 50,000 cycles
 - Panel Thickness: 1 ~ 10mm
 - Torque: About 0.6Nm
 - Actuation Force: About 3N
 - Actuation Travel: About 3.1mm
 - Protection Class: IP65,IK08
 - Contact: Silvery Alloy
 - Actuator:Stainless steel
 - Body: Stainless steel
 - Base: PBT
- made to order.

RoHS

Dimension



Terminal Arrangement



Tri-color Lamp Specification

Lamp Type	Unidirection Tri-color LED
LED Color	R G B
Life	4000hours(Reference)
Rated Voltage	Without Resistor R 1.8V, G 2.8V, B 2.8V With internal resistor: DC6V, DC12V, DC24V
Rated Current	5~15mA
Lamp Circuit Diagram	<p>Common Cathode Common Anode</p> <p>Using unidirection LED lamp, need distinguish anode and cathode, Using inner resistor, do not need connect outer resistor. (Three resistors need connected outside)</p>

Switch Rating

Rated Insulation Voltage Ui		250V			
Thermal Current Ith		5A 温度不超过最大额定值所允许的电流			
Rated Voltage		12V	24V	110V	220V
Rated Operation Current	AC 50/60Hz	—	—	1A	0.5A
	DC	—	—	0.7A	0.5A
Rated Current	Resistive load	1A	1A	0.2A	—
	Inductive load	0.7A	0.7A	0.1A	—
Contact material		Silver Alloy			

Minimum load: 3VAC/DC, 5mA (Reference)
Application scope depends on operating environment and load type