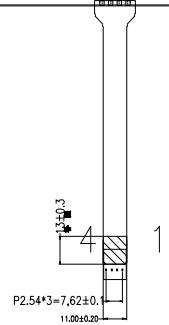
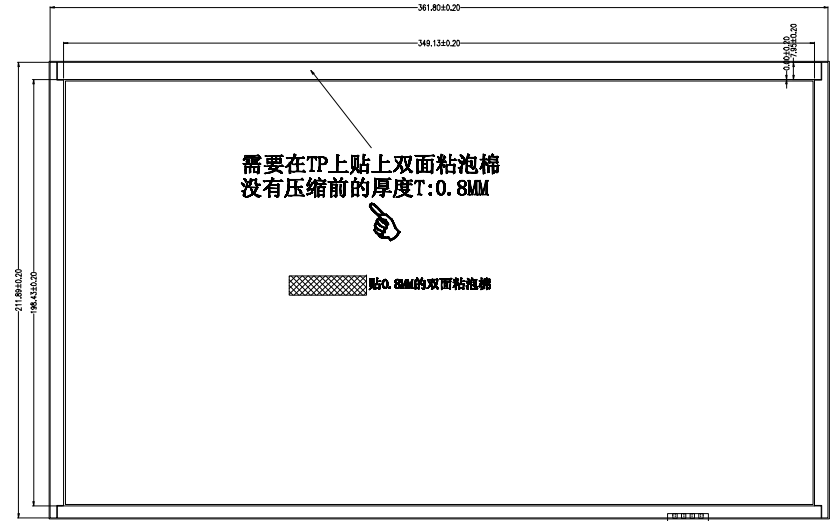
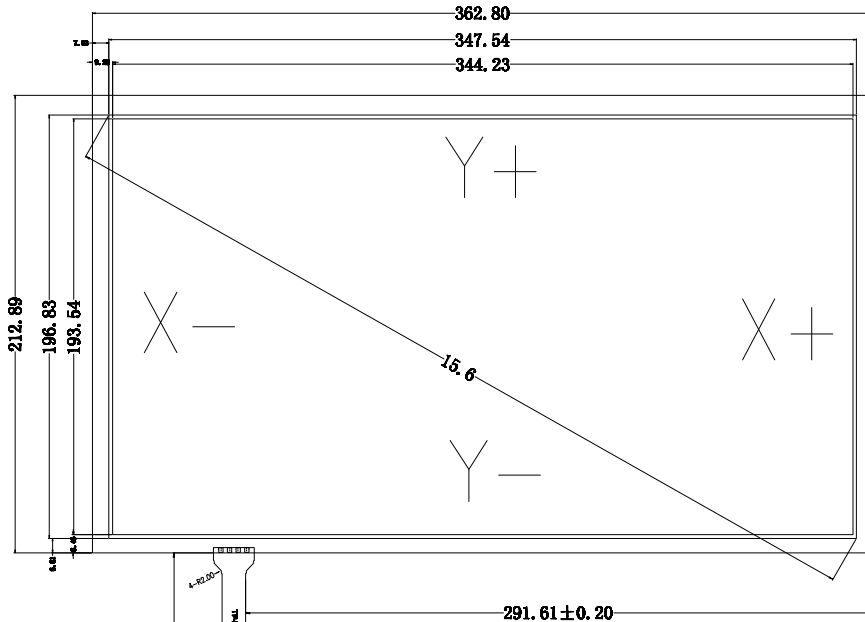


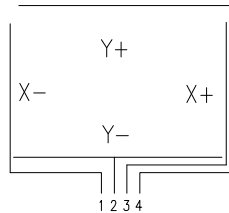
正视图

侧视图

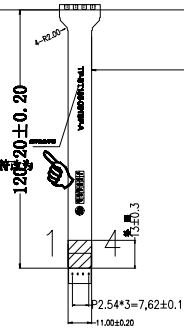
背视图



逻辑:



通用LX-122026-4FPC 在持续上字转
TP-BT156-001BP-A



说明:

1. 结构: film+glass+FPC
film:雾面防牛 (0.188mm)
glass:500Ω/□ (1.8mm)
tail:FPC (pitch=2.54mm)
总厚度: 2.1±0.10mm
2. 工作电压: 5.0V
3. 电路等级: DC5V 1mA
4. 绝缘阻抗: ≥20MΩ (25V DC)
5. 线性: ≤1.5%
6. 透光率: ≥80%
7. 操作压力: 10-100g
8. 使用寿命: ≥1,000,000次
9. 工作环境: -10℃~+60℃, ≤90%RH
10. 储存环境: -20℃~+70℃, ≤90%RH
11. 未注尺寸公差按±0.20

UNLESS OTHERWISE SPECIFIED
DIMENSIONS ARE IN INCHES MILLIMETERS
TOLERANCES: ANGLES ±1°
.XX" ±.02"
.XXX" ±.005"
OR
0.Xmm ±0.5mm
0.XXmm ±0.13mm

客户型号: TP-BT156-001BP-A

DATE: DE-DATE

DRAWING NO.:

设计: Junping Yi

DATE: CH-DATE

LX-TPM1141-15.6

出图日期: 2018-12-04

DATE: APP-DATE

TITLE: TITLE

SHEET NO.: 1 OF 1



REV

REV