

PROPRIETARY NOTE

THIS SPECIFICATION IS THE PROPERTY OF BOE HF AND SHALL NOT BE REPRODUCED OR COPIED WITHOUT THE WRITTEN PERMISSION OF BOE HF AND MUST BE RETURNED TO BOE HF UPON ITS REQUEST



SPEC. NUMBER	PRODUCT GROUP TFT- LCD	REV. P0	ISSUE DATE 2023.2.16	PAGE 1 OF 30
--------------	---------------------------	------------	-------------------------	-----------------

GV101FHM-N10 Product Specification Rev.P0

BUYER	
SUPPLIER	BOE Optoelectronics Technology CO., LTD
FG-Code	GV101FHM-N10-4850

ITEM	BUYER SIGNATURE	DATE
_____	_____	_____
_____	_____	_____
_____	_____	_____

ITEM	SUPPLIER SIGNATURE	DATE
Prepared	_____	_____
Reviewed	_____	_____
Approved	_____	_____

PROPRIETARY NOTE

THIS SPECIFICATION IS THE PROPERTY OF BOE HF AND SHALL NOT BE REPRODUCED OR COPIED WITHOUT THE WRITTEN PERMISSION OF BOE HF AND MUST BE RETURNED TO BOE HF UPON ITS REQUEST



SPEC. NUMBER

PRODUCT GROUP

REV.

ISSUE DATE

PAGE

TFT- LCD

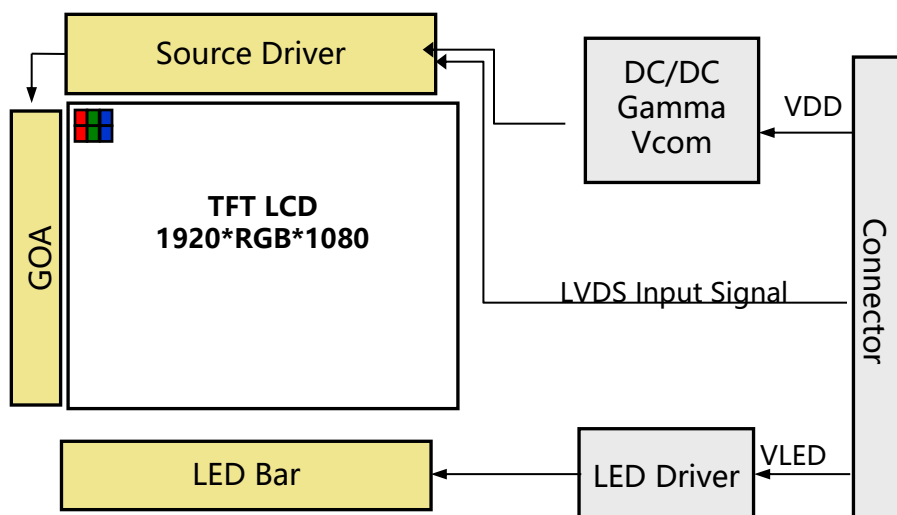
3 OF 30

Contents

No.	Items	Page
1.0	General Description	4
2.0	Absolute Maximum ratings	6
3.0	Electrical specifications.	7
4.0	Interface Connection	10
5.0	Signal Timing Specifications	13
6.0	Signal Timing Waveforms Of Interface Signal	15
7.0	Power Sequence	17
8.0	Optical specifications.	18
9.0	Mechanical Outline Dimension	22
10.0	Reliability Test	24
11.0	Precautions	25
12.0	Label	29
13.0	Packing information	31

1.0 GENERAL DESCRIPTION

GV101FHM-N10-4850 is a color active matrix TFT LCD module using amorphous silicon TFT's (Thin Film Transistors) as an active switching devices. This module has a 10.1 inch diagonally measured active area with FHD resolutions (1920 horizontal by 1080 vertical pixel array). Each pixel is divided into RED, GREEN, BLUE dots which are arranged in vertical stripe and this module can display 16.7 M colors.



1.0.2 Features

- LED back-light
- LVDS interface
- RoHS Compliant
- 16.7M color depth

1.0.3 Application

- Video Phone/IP Phone/Smart Key/ e-cigarettes etc.

1.0.4 General Specification

< Table 1. General Specifications >

Parameter	Specification	Unit	Remarks
Active area	125.712 (H) × 223.488(V)	mm	
Number of pixels	1920(H) × 1080(V)	Pixels	
Pixel pitch	0.0376(H)×RGB×0.1128(V)	mm	
Pixel arrangement	Pixels RGB stripe arrangement		
Display colors	16.7M(8bit)	Colors	
Display mode	Normally White		
Dimensional outline	229.91 (W) × 135.74(H) × 2.8(D) typ.	mm	
Weight	TBD	g	
Surface treatment	HC , AG		
Back-light	White LED		

2.0 ABSOLUTE MAXIMUM RATINGS

The followings are maximum values which, if exceed, may cause faulty operation or damage to the unit. The operational and non-operational maximum voltage and current values are listed in Table 2.

< Table 3. Environment Absolute Maximum Ratings> [Ta =25±2 °C]

Parameter	Symbol	Min.	Type.	Max.	Unit	Remarks
Power Supply Input Voltage	VCC	3.0	3.3	3.6	V	Ta = 25 °C Note 1&2
Operating Temperature	Top	-10		+60	°C	Note 3,4,5,6
Storage Temperature	TST	-20		+70	°C	

Note:

1. These range above is maximum value not the actual operating temperature . Actual Operating temperature is no more than 40°C and temperature refers to the LCM surface temperature ;
2. BOE is not responsible for product problems beyond the use conditions.
3. When the ambient temperature is T °C, the surface temperature of Panel can not exceed (T+15)°C.
4. Temperature and relative humidity range is shown in the figure below.
5. 90 %RH Max. (Ta < 40 °C).
6. Wet-bulb temperature should be 39 °C Max. (Ta > 40 °C).
7. No condensation
8. for Module only

3.0 ELECTRICAL SPECIFICATIONS

3.0.1 TFT LCD Module

< Table 4. LCD Module Electrical Specifications >

[Ta =25±2 °C]

Parameter	Symbol	Values			Unit	Notes
		Min	Typ	Max		
Power Supply Input Voltage	V _{DD}	3	3.3	3.6	V	Note 1
Power Supply Current	I _{DD}	-	-	-	mA	
Positive-going Input Threshold Voltage	V _{IT+}	-		+100	mV	V _{com} = 1.2V typ.
Negative-going Input Threshold Voltage	V _{IT-}	-100		-	mV	
Differential input common mode voltage	V _{com}		1.2		V	V _{IH} =100mV, V _{IL} =-100mV

Notes : 1. The supply voltage is measured and specified at the interface connector of LCM.
The current draw and power consumption specified is for 5V at 25 °C
Max value at Black Pattern

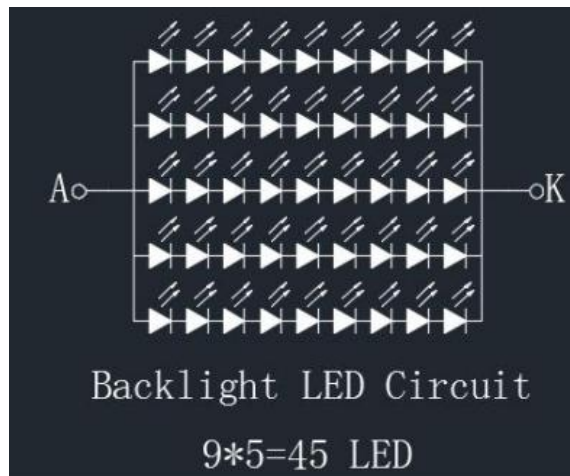
2. Calculated value for reference $I_{LED} \times V_{LED} \div 0.01 = P_{LED}$

3.1 Back-light Unit

< Table 6. LED Driving guideline specifications >

Ta=25+/-2°C

Parameter		Min.	Typ.	Max.	Unit	Remarks
LED Current	I_{LED}	-	100	-	mA	
Forward voltage	V_{LED}	-	54	-	V	
LED Lifetime	--	30,000			Hrs	Note



Notes : 1. Calculator Value for reference $I_{LED} \times V_{LED} = P_{LED}$

2. The LED Life-time define as the estimated time to 50% degradation of initial luminous under the condition of the ambient temperature of 25°C.

4.0 INTERFACE CONNECTION.**4.0.1 Electrical Interface Connection**

The electronics interface connector IS100-L30R-C23 (UJU) or equivalent.

The LED connector is CI4205M2HRD-NH or equivalent.

The connector interface pin assignments are listed in Table 7 and 8.

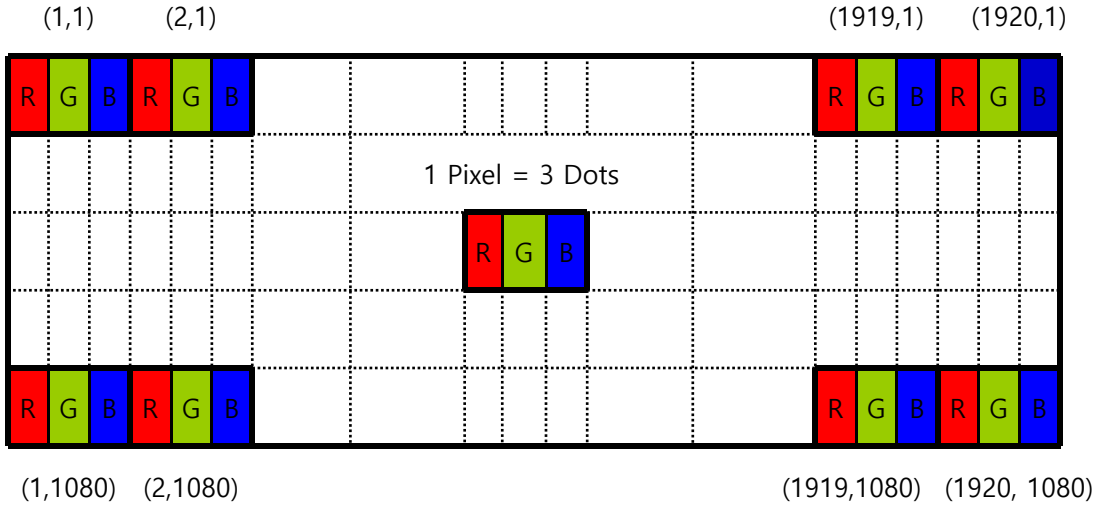
<Table 7. Pin Assignments for the Interface Connector>

Pin No.	Symbol	Description	remark
1	VLED-	LED Cathode	
2	VLED-	LED Cathode	
3	VLED+	LED Anode	
4	VLED+	LED Anode	
5	GND	Ground	
6	RX00-	Negative Transmission data of Pixel 0 (ODD)	
7	RX00+	Positive Transmission data of Pixel 0 (ODD)	
8	GND	Ground	
9	RX01-	Negative Transmission data of Pixel 1 (ODD)	
10	RX01+	Positive Transmission data of Pixel 1 (ODD)	
11	GND	Ground	
12	RXOC-	Negative Transmission Clock (ODD)	
13	RXOC+	Positive Transmission Clock (ODD)	
14	GND	Ground	
15	RX02-	Negative Transmission data of Pixel 2 (ODD)	
16	RX02+	Positive Transmission data of Pixel 2 (ODD)	
17	GND	Ground	
18	RX03-	Negative Transmission data of Pixel 3 (ODD)	
19	RX03+	Positive Transmission data of Pixel 3 (ODD)	
20	GND	Ground	
21	RXE0-	Negative Transmission data of Pixel 0 (EVEN)	
22	RXE0+	Positive Transmission data of Pixel 0 (EVEN)	
23	GND	Ground	
24	RXE1-	Negative Transmission data of Pixel 1 (EVEN)	
25	RXE1+	Positive Transmission data of Pixel 1 (EVEN)	

Pin No.	Symbol	Description	remark
26	GND	Ground	
27	RXEC-	Negative Transmission Clock (EVEN)	
28	RXEC+	Positive Transmission Clock (EVEN)	
29	GND	Ground	
30	RXE2-	Negative Transmission data of Pixel 2 (EVEN)	
31	RXE2+	Positive Transmission data of Pixel 2 (EVEN)	
32	GND	Ground	
33	RXE3-	Negative Transmission data of Pixel 3 (EVEN)	
34	RXE3+	Positive Transmission data of Pixel 3 (EVEN)	
35	STBYB	Stbyb Pin Low active	
36	I2C-SDA	Serial address and data for I2C	
37	I2C-SCL	Clock signal for I2C interface	
38	RESET	Reset Pin,Low active	
39	VDDIN	Power Supply: +3.3V	
40	VDDIN	Power Supply: +3.3V	

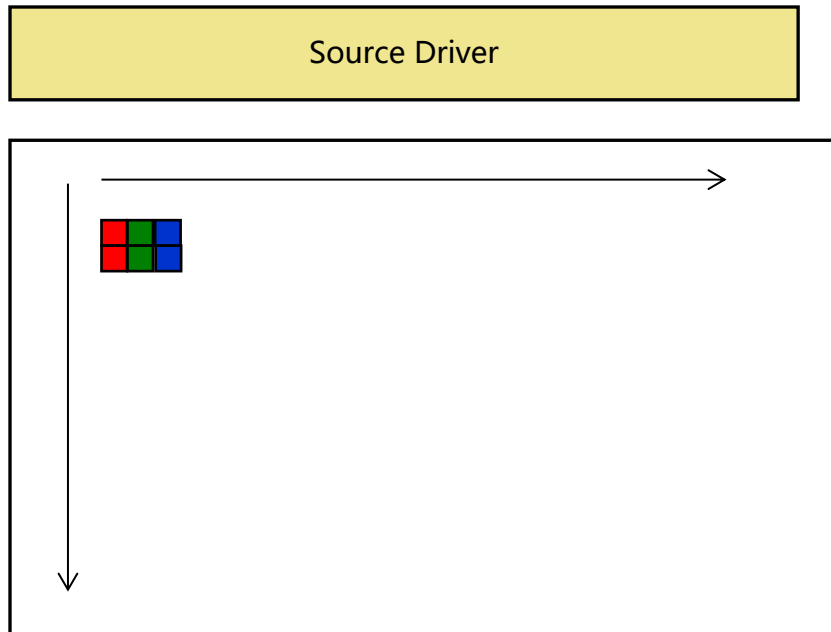
4.2 Data Input Format

Figure 5. Pixel Format



Display Position of Input Data (V-H)

Figure 6. Scan direction



5.0 SIGNAL TIMING SPECIFICATION

5.0.1 The GV101FHM-N10-4850 is operated by the DE only.

< Table7. SSC limitation of LVDS interface >

Parameter	Symbol	condition	Spec			Unit
			Min.	Typ.	Max	
Modulation frequency	SSCmf	LVDS clock frequency center at 80MHZ	-	-	200	KHZ
		LVDS clock frequency center at 60MHZ	-	-	150	KHZ
		LVDS clock frequency center at 40MHZ	-	-	100	KHZ
		LVDS clock frequency center at 20MHZ	-	-	50	KHZ
Modulation rate	SSCmr	LVDS clock frequency+SSCMR in the range of 20MHZ~80MHZ	-	-	±3	%

< Table8. Timing Parameter >

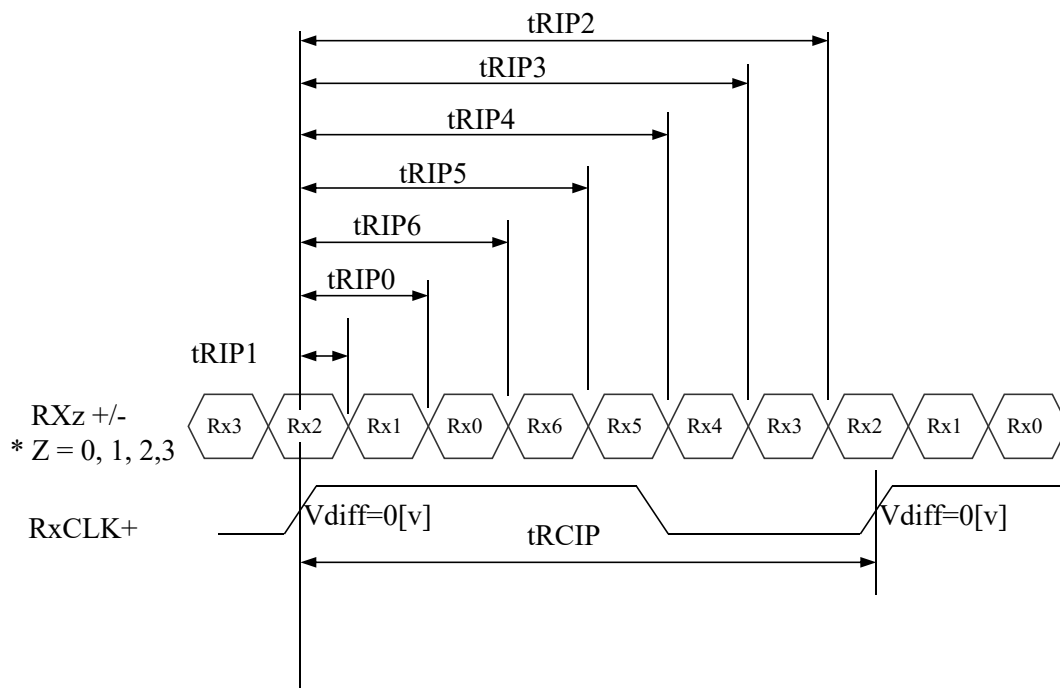
Item		Symbol	min	typ	max	UNIT	
LCD	Frame Rate	-	-	60	-	Hz	
Timing	DCLK	Frequency	fCLK	-	68.4	-	MHz
	Horizontal	Horizontal total time	tHP	-	1014	-	t _{CLK}
		Horizontal Valid data	thd	960			t _{CLK}
		Horizontal Pulse Width	tHsync	-	12	-	t _{CLK}
		Horizontal Back Porch	tHBP	-	16	-	t _{CLK}
		Horizontal Front Porch	tHFP	-	38	-	t _{CLK}
	Vertical	Vertical total time	tvp	-	1124	-	t _H
		Vertical Valid time	tvd	1080			t _H
		Vertical Pulse Width	tVsync	-	5	-	t _H
		Vertical Back Porch	tVBP	-	24	-	t _H
Vertical Front Porch		tVFP	-	20	-	t _H	

5.02 LVDS Rx Interface Timing Parameter

The specification of the LVDS Rx interface timing parameter is shown in Table 4.

<Table 9. LVDS Rx Interface Timing Specification>

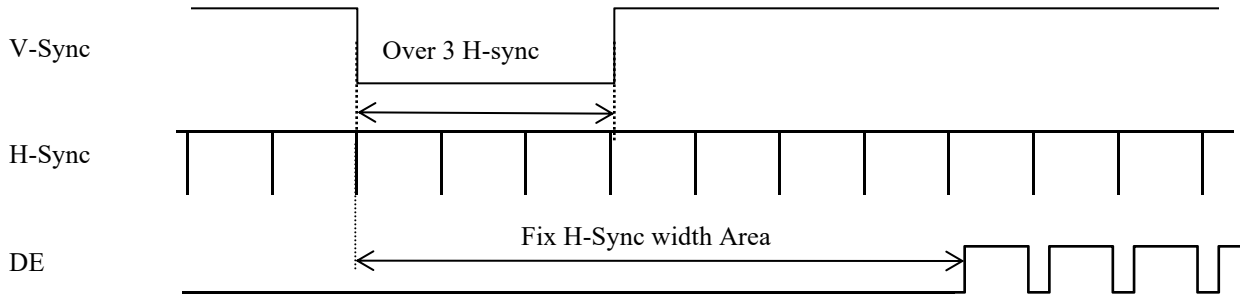
Item	Symbol	Min	Typ	Max	Unit	Remark
CLKIN Period	tRCIP	9.5		25	nsec	
Input Data 0	tRIP1	-0.4	0.0	+0.4	nsec	
Input Data 1	tRIP0	tRCIP/7-0.4	tRCIP/7	tRCIP/7+0.4	nsec	
Input Data 2	tRIP6	2 × tRCIP/7-0.4	2 × tRCIP/7	2 × tRCIP/7+0.4	nsec	
Input Data 3	tRIP5	3 × tRCIP/7-0.4	3 × tRCIP/7	3 × tRCIP/7+0.4	nsec	
Input Data 4	tRIP4	4 × tRCIP/7-0.4	4 × tRCIP/7	4 × tRCIP/7+0.4	nsec	
Input Data 5	tRIP3	5 × tRCIP/7-0.4	5 × tRCIP/7	5 × tRCIP/7+0.4	nsec	
Input Data 6	tRIP2	6 × tRCIP/7-0.4	6 × tRCIP/7	6 × tRCIP/7+0.4	nsec	



* $V_{diff} = (RXz+) - (RXz-), \dots, (RXCLK+) - (RXCLK-)$

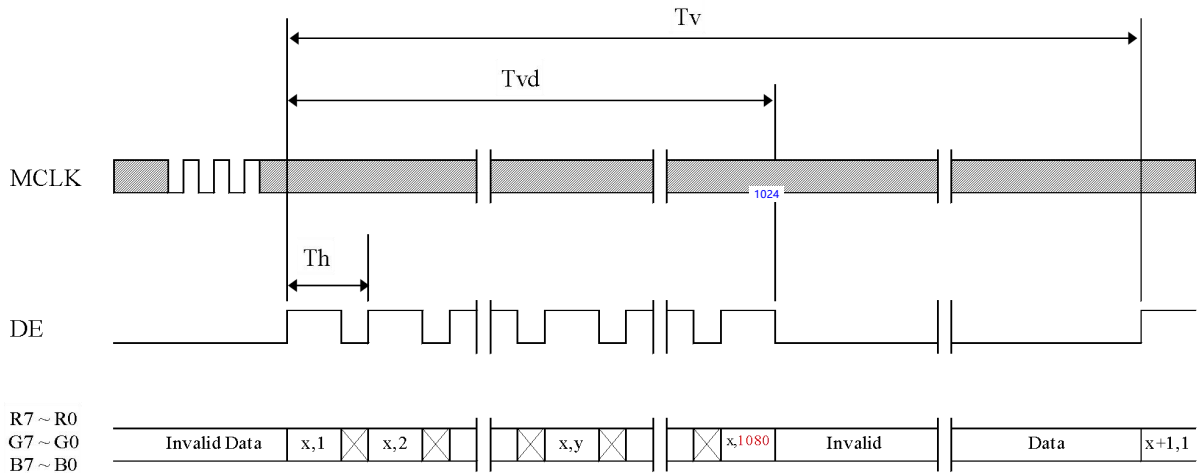
6. SIGNAL TIMING WAVEFORMS OF INTERFACE SIGNAL

6.01 Sync Timing Waveforms

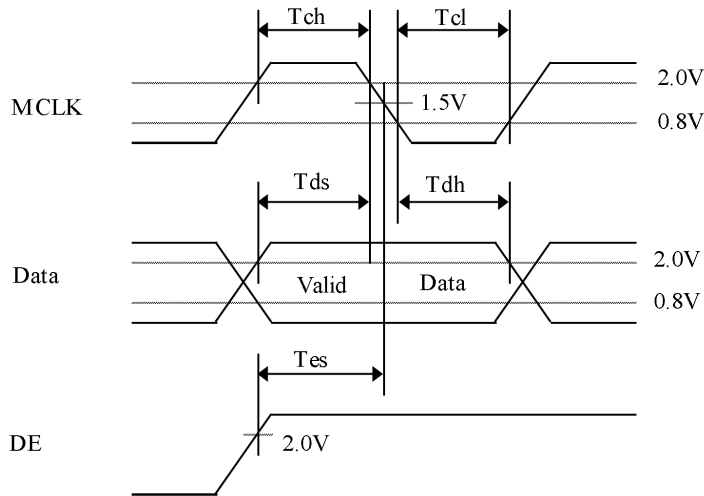
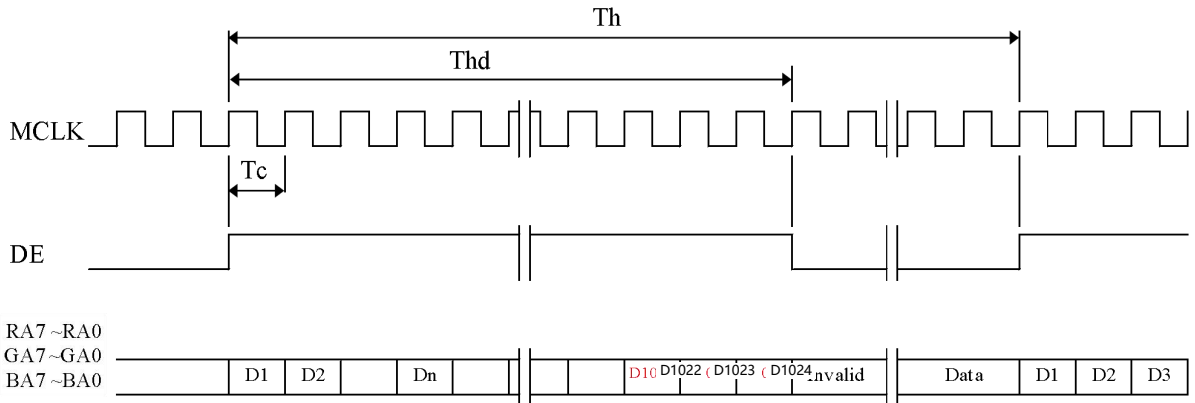


- 1) Need over 3 H-sync during V-Sync Low
- 2) Fix H-Sync width from V-Sync falling edge to first rising edge

6.02 Vertical Timing Waveforms

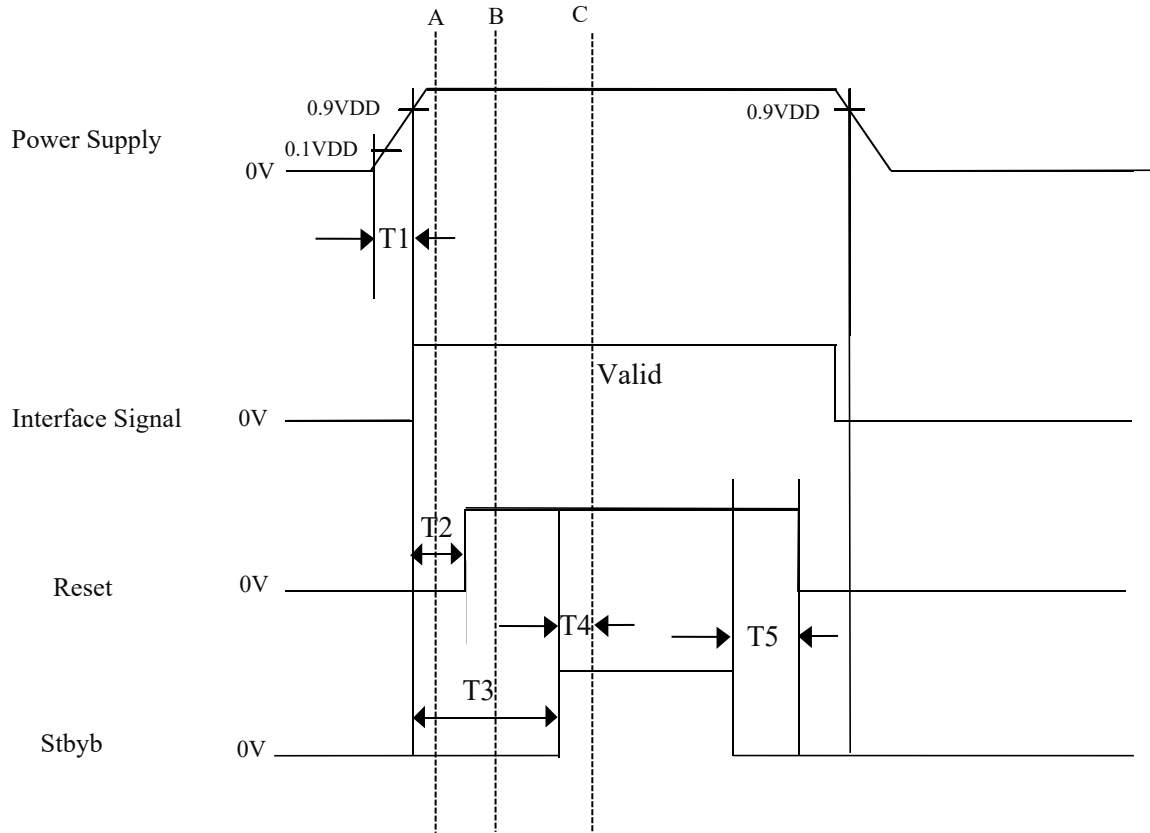


6.03 Horizontal Timing Waveforms



7.0 POWER SEQUENCE

To prevent a latch-up or DC operation of the LCD module, the power on/off sequence shall be as shown in below



- $0.5\text{ ms} < T1 < 10\text{ ms}$
- $T2 > 10\text{ us}$
- $T3 > 16\text{ ms}$
- $T4 < 150\text{ ms}$
- $T5 > 90\text{ ms}$

Notes:

1. The valid LVDS signals(clock pair and all data pairs in toggling state) must be consistent with panel resolution and suggestions.
2. The application system can apply LVDS signals from point A (VCC1 is reday and not reset completeted) ,B(reset completeted and in standby mode , or C(reset comoleted and non-standby mode)

8.0 OPTICAL SPECIFICATION

8.0.1 Overview

The test of view angle range shall be measured in a dark room (ambient luminance ≤ 1 lux and temperature = $25 \pm 2^\circ\text{C}$) with the equipment of Luminance meter system (Goniometer system and TOPCON CS2000/CA310) and test unit shall be located at an approximate distance 50cm from the LCD surface at a viewing angle of θ and Φ equal to 0° . We refer to $\theta \Phi = 0$ ($= \theta 3$) as the 3 o'clock direction (the "right"), $\theta \Phi = 90$ ($= \theta 12$) as the 12 o'clock direction ("upward"), $\theta \Phi = 180$ ($= \theta 9$) as the 9 o'clock direction ("left") and $\theta \Phi = 270$ ($= \theta 6$) as the 6 o'clock direction ("bottom"). While scanning θ and/or Φ , the center of the measuring spot on the Display surface shall stay fixed. The luminance, color and uniformity (etc) should be tested by CS2000/CA310. The backlight should be operating for 10 minutes prior to measurement. VDD shall be $3.3 \pm 0.3\text{V}$ at 25°C . Optimum viewing angle direction is 6 'clock

<Table 10. Optical Specifications>

Parameter		Symbol	Condition	Min.	Typ.	Max.	Unit	Remark
Viewing Angle range	Horizontal	Θ_3	CR > 10	75	80	-	Deg.	Note 1
		Θ_9		70	80	-	Deg.	
	Vertical	Θ_{12}		75	80	-	Deg.	
		Θ_6		75	80	-	Deg.	
Luminance Contrast ratio		CR	$\Theta = 0^\circ$	700	850	-		Note 2
Luminance of White	Center	Y_w	$\Theta = 0^\circ$	600	700	-	cd/m ²	Note 3
White Luminance uniformity	9 Points	ΔY_9		75	80	-	%	Note 4
Color Gamut	NTSC	CIE1931	$\Theta = 0^\circ$	65	70	-	%	Note 5
Reproduction of color	CLE1931	Rx	$\Theta = 0^\circ$	Typ-0.5	0.66	Typ+0.5		
		Ry			0.31			
		Gx			0.25			
		Gy			0.65			
		Bx			0.14			
		By			0.07			
		Wx			0.30			
Wy	0.30							
Response Time		Tr+Td	Ta= 25°C $\Theta = 0^\circ$	-	25	30	ms	Note 6

Notes : 1. Viewing angle is the angle at which the contrast ratio is greater than 10. The viewing angles are determined for the horizontal or 3, 9 o'clock direction and the vertical or 6, 12 o'clock direction with respect to the optical axis which is normal to the LCD surface (see FIGURE 1).

2. Contrast measurements shall be made at viewing angle of $\Theta = 0$ and at the center of the LCD surface. Luminance shall be measured with all pixels in the view field set first to white, then to the dark (black) state. (see FIGURE 1) Luminance Contrast Ratio (CR) is defined mathematically.

$$CR = \frac{\text{Luminance when displaying a white raster}}{\text{Luminance when displaying a black raster}}$$

3. Luminance of white is defined as luminance values of center of the LCD surface. Luminance shall be measured with all pixels in the view field set first to white. This measurement shall be taken at the locations shown in FIGURE 2 for a total of the measurements per display. The luminance is measured by CS2000/CA310 when the LED current is set at 60mA.

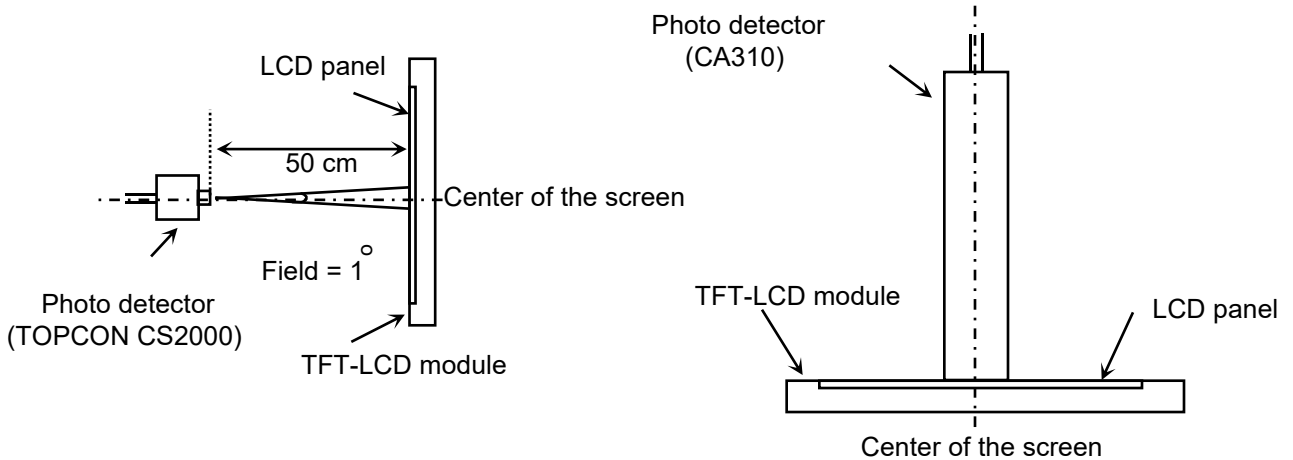
4. The White luminance uniformity on LCD surface is then expressed as : $\Delta Y = \frac{\text{Minimum Luminance of 9 Points}}{\text{Maximum Luminance of 9 Points}}$ (See FIGURE 2).

5. The color chromaticity coordinates specified in Table 5. shall be calculated from the spectral data measured with all pixels first in red, green, blue and white. Measurements shall be made at the center of the panel.

6. The electro-optical response time measurements shall be made as FIGURE 3 by switching the "data" input signal ON and OFF. The times needed for the luminance to change from 10% to 90% is T_r , and 90% to 10% is T_d .

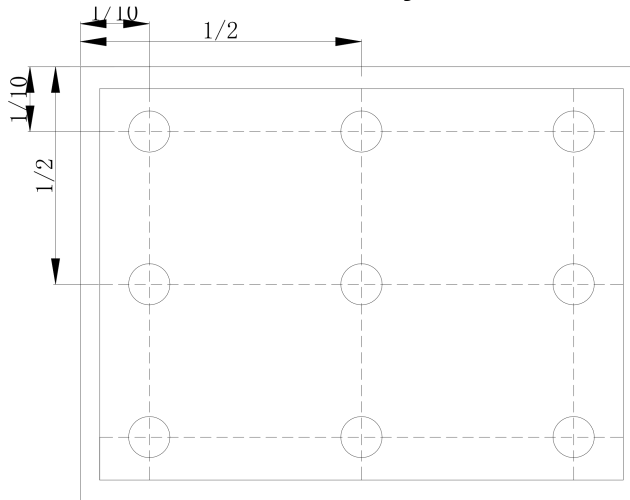
8.0.2 Optical measurements

Figure 1. Measurement Set Up



View angel range, uniformity, etc. measurement setup Flicker, measurement setup

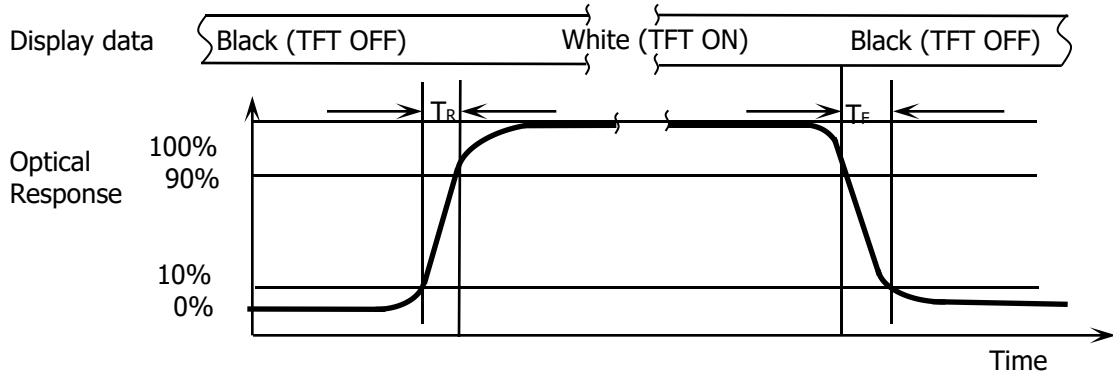
Figure 2. White Luminance and Uniformity Measurement Locations (9 points)



Luminance of white is defined as luminance values of center of the LCD surface. Luminance shall be measured with all pixels in the view field set first to white. This measurement shall be taken at the locations shown in FIGURE 2 for a total of the measurements per display.

The White luminance uniformity on LCD surface is then expressed as : $\Delta Y9 = \text{Minimum Luminance of 9 points} / \text{Maximum Luminance of 9points}$ (see FIGURE 2).

Figure 3. Response Time Testing



The electro-optical response time measurements shall be made as shown in FIGURE 3 by switching the “data” input signal ON and OFF. The times needed for the luminance to change from 10% to 90% is Tr and 90% to 10% is Td.

9.0 MECHANICAL OUTLINE DIMENSION

Figure 1. TFT-LCD Module Outline Dimension (Front View)

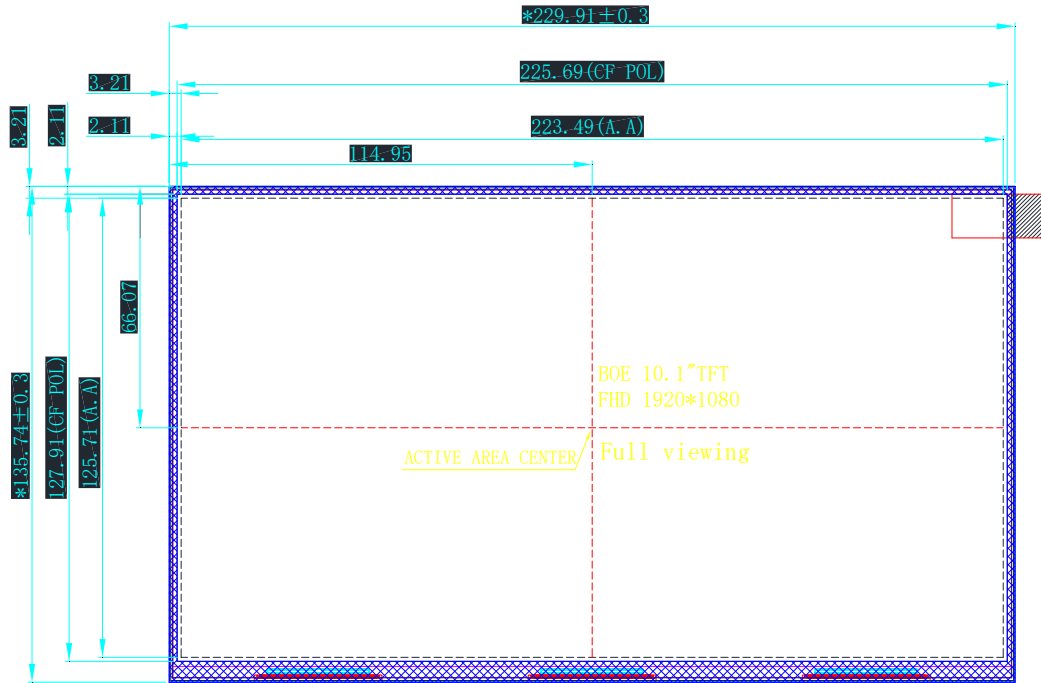
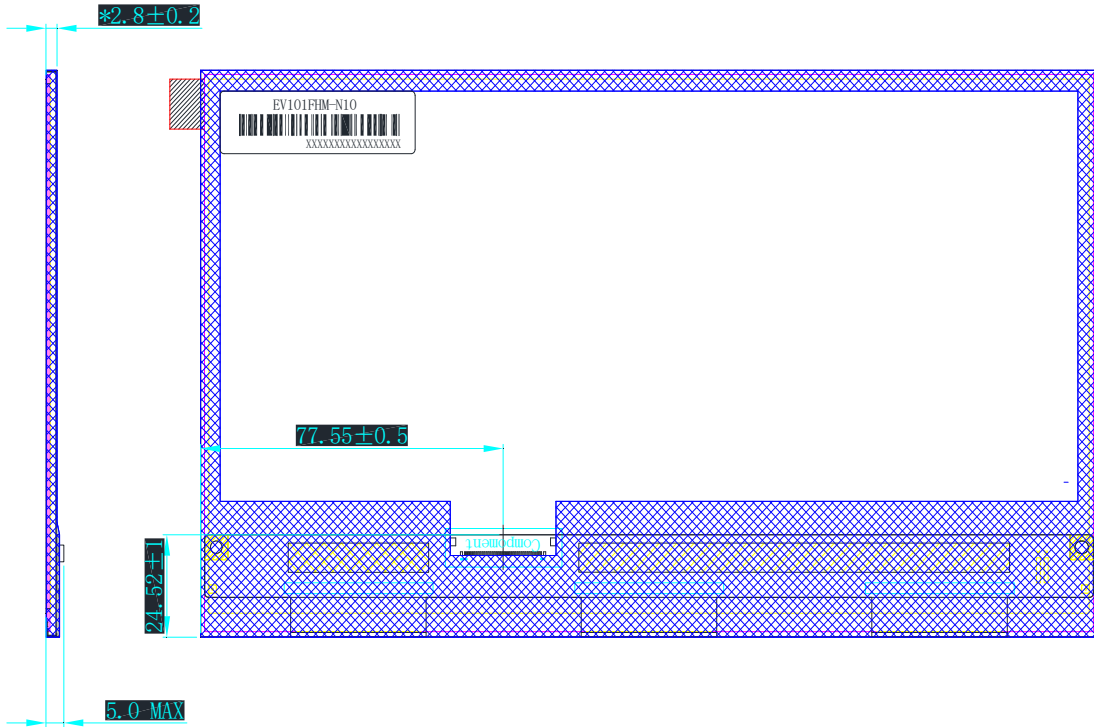


Figure 2. TFT-LCD Module Outline Dimensions (Rear view)



10.0 RELIABILITY TEST

The Reliability test items and its conditions are shown in below.

<Table 11. Reliability test>

No	Test Items	Conditions	Remark
1	High temperature storage test	Ta = 70°C, 240 hrs	The test result shall be evaluated after the sample has been left at room temperature and humidity for 2 hours. These defects can't be accepted: 1.Air bubble 2.Seal leak 3.Non-display 4.Missing segments 5.Glass crack
2	Low temperature storage test	Ta = -20 °C, 240 hrs	
3	High temperature operation test	Ta = 60°C, 240 hrs	
4	Low temperature operation test	Ta = -10 °C, 240 hrs	
5	High temperature & high humidity	Ta = 50 °C, 80%RH, 96 hrs	
6	Thermal shock(Non-operation)	Ta = -20 °C ↔ 70°C (0.5 hr), 1hour/Cycle,72 cycle	
7	ESD test(operation)	C=150pF, R=330Ω, Air: ±8KV, Contact: ±4KV,100point	Air: PANEL AA around Contact: BEZEL Class C
8	Vibration Test(Non-operation)	1.5G,10~50Hz,30min/AXIS X,Y,Z directions Wave: sine	
9	Package Drop Test	Height: 60cm, 1corner, 3edges, 6surfaces	

Note :

(1)After the reliability test, the product only guarantee function normally without any fatal defect (non-display, line defect, abnormal display etc). All the cosmetic specification is judged before the reliability test.

• 11.0 Precautions

Please pay attention to the followings when you use this TFT LCD Panel.

• 11.1 Mounting Precautions

- (1) Use fingerstalls with soft gloves in order to keep display clean during the incoming inspection and assembly process.
- (2) You must mount a module using specified mounting holes (Details refer to the drawings).
- (3) Please make sure to avoid external forces applied to the Source PCB or FPC and D-IC during the process of handling or assembling. If not, It causes panel damage or malfunction.
- (4) Note that polarizers are very fragile and could be easily damaged. Do not touch, push or rub the exposed polarizers with glass, tweezers or anything harder than HB pencil lead. And please do not rub with dust clothes with chemical treatment.
- (5) Do not pull or fold the source D-IC which connect the source PCB or FPC and the panel.
Do not pull or fold the LED wire.
- (6) After removing the protective film, when the surface becomes dusty, please wipe gently with absorbent cotton or other soft materials like chamois soaks with alcohol or purified water.
Do not strong polar solvent because they cause chemical damage to the polarizer.
- (7) Wipe off saliva or water drops as soon as possible. Their long time contact with polarizer causes deformations and color fading.
- (8) Protection film for polarizer on the module shall be slowly peeled off just before use so that the electrostatic charge can be minimized.
- (9) Since the LCD is made of glass, do not apply strong mechanical impact or static load onto it. Handling with care since shock, vibration, and careless handling may seriously affect the product. If it falls from a high place or receives a strong shock, the glass may be broken.
- (10) Do not disassemble the module.
- (11) To determine the optimum mounting angle, refer to the viewing angle range in the specification for each model.
- (12) If the customer's set presses the main parts of the LCD, the LCD may show the abnormal display. But this phenomenon does not mean the malfunction of the LCD and should be pressed by the way of mutual agreement.
- (13) Do not drop water or any chemicals onto the LCD's surface.

11.2 Operating Precautions

- (1) Be careful for condensation at sudden temperature change. Condensation makes damage to polarizer or electrical contacted parts. And after fading condensation, smear or spot will occur.
- (2) Module has high frequency circuits. Sufficient suppression to the electromagnetic interference shall be done by system manufacturers. Grounding and shielding methods may be important to minimized the interference.
- (3) The electrochemical reaction caused by DC voltage will lead to LCD degradation, so DC drive should be avoided.
- (4) The LCD modules use C-MOS LSI drivers, so customers are recommended that any unused input terminal would be connected to Vdd or Vss, do not input any signals before power is turn on, and ground you body, work/assembly area, assembly equipments to protect against static electricity.
- (5) Do not exceed the absolute maximum rating value. (supply voltage variation, input voltage variation, variation in part contents and environmental temperature, and so on) Otherwise the Module may be damaged.
- (6) Design the length of cable to connect between the connector for back-light and the converter as short as possible and the shorter cable shall be connected directly.
The longer cable between that of back-light and that of converter may cause the luminance of LED to lower and need a higher startup voltage(Vs).
- (7) Connectors are precise devices for connecting PCB and transmitting electrical signals. Operators should insert and unplug MDL in parallel when assembling MDL.
- (8) Do not connect or disconnect the cable to/ from the module at the "Power On" condition.
- (9) When the module is operating, do not lose CLK, ENAB signals. If any one these signals is lost, the LCD panel would be damaged.
- (10) Obey the supply voltage sequence. If wrong sequence is applied, the module would be damaged.
- (11) Do not re-adjust variable resistor or switch etc.

11.3 Electrostatic Discharge Control

- (1) Since a module is composed of electronic circuits, it is not strong to electrostatic discharge. Make certain that treatment persons are connected to ground through wrist band etc. And don't touch interface pin directly. Keep products as far away from static electricity as possible.
- (2) Avoid the use work clothing made of synthetic fibers. We recommend cotton clothing or other conductivity-treated fibers.

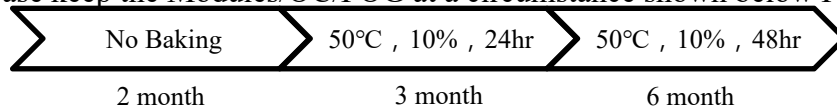
11.4 Precautions for Strong Light Exposure

It is not allowed to store or Operate directly in strong light or in high temperature and humidity for a long time; Strong light exposure causes degradation of polarizer and color filter.

11.5 Storage Precautions

When storing modules as spares for a long time, the following precautions are necessary.

- (1) The polarizer surface should not come in contact with any other object.
It is recommended that they be stored in the container in which they were shipped.
Temperature : 5 ~ 40 °C
- (2) Humidity : 35 ~ 75 %RH
- (3) Period : 6 months
- (4) Control of ventilation and temperature is necessary.
- (5) Please make sure to protect the product from strong light exposure, water or moisture.
Be careful for condensation.
- (6) Store in a polyethylene bag with sealed so as not to enter fresh air outside in it.
- (7) Do not store the LCD near organic solvents or corrosive gasses.
- (8) Please keep the Modules/OC/FOG at a circumstance shown below Fig.



11.6 Precautions for Protection Film

- (1) Remove the protective film slowly, keeping the removing direction approximate 30-degree not vertical from panel surface, If possible, under ESD control device like ion blower, and the humidity of working room should be kept over 50%RH to reduce the risk of static charge.
- (2) In handling the LCD, wear non-charged material gloves. And the conducting wrist to the earth and the conducting shoes to the earth are necessary.

11.7 Appropriate Condition for Display

- (1) Normal operating condition
 - Temperature: 0 ~ 40°C
 - Operating Ambient Humidity : 10 ~ 90 %
 - Display pattern: dynamic pattern (Real display)
 - Suitable operating time: under 16 hours a day.
 - Long-term lighting products recommended regular shutdown
- (2) Special operating condition

If the product will be used in extreme conditions such as high temperature, humidity, display patterns or 7*24hrs operation time etc., It is strongly recommended to contact BOE for Application engineering advice. Otherwise, its reliability and function may not be guaranteed.

- (3) Black image or moving image is strongly recommended as a screen save.

- (4) Lifetime in this spec. is guaranteed only when commercial display is used according to operating usages.
- (5) Please contact BOE in advance when you want to switch between portrait and landscape screen.
- (6) Please contact BOE in advance for outdoor operation.
- (7) Please contact BOE in advance when you display the same pattern for a long time.
- (8) If the Module keeps displaying the same pattern for a long period of time, the image may be "sticked" to the screen. To avoid image sticking, it is recommended to use a screen saver.
- (9) Do not exceed the absolute maximum rating value. (supply voltage variation, input voltage variation, variation in part contents and environmental temperature, and so on) Otherwise the Module may be damaged.
- (10) Dew drop atmosphere should be avoided.
- (11) The storage room should be equipped with a good ventilation facility and avoid to expose to corrosive gas , which has a temperature controlling system.
- (12) When expose to drastic fluctuation of temperature (hot to cold or cold to hot) ,the LCD may be affected; Specifically, drastic temperature fluctuation from cold to hot ,produces dew on the LCD's surface which may affect the operation of the polarizer and the LCD.
- (13) Response time will be extremely delayed at lower temperature than the operating temperature range and on the other hand at higher temperature LCD may turn black at temperature above its operational range. However those phenomena do not mean malfunction or out of order with the LCD. The LCD will revert to normal operation once the temperature returns to the recommended temperature range for normal operation

11.8 Others

A. LC Leak

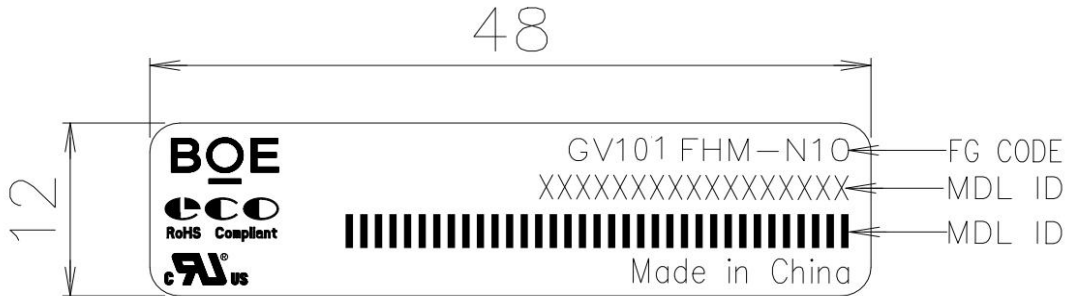
- If the liquid crystal material leaks from the panel, it is recommended to wash the LC with acetone or ethanol and then burn it.
- In case of contact with hands, skin or clothes, it has to be washed away thoroughly with soap.
- If LC in mouth, mouth need to be washed, drink plenty of water to induce vomiting and follow medical advice.
- If LC touch eyes, eyes need to be washed with running water at least 15 minutes.

B. Rework

- When returning the module for repair or etc., Please pack the module not to be broken. We recommend to use the original shipping packages.

12.0 LABEL

(1) Product label

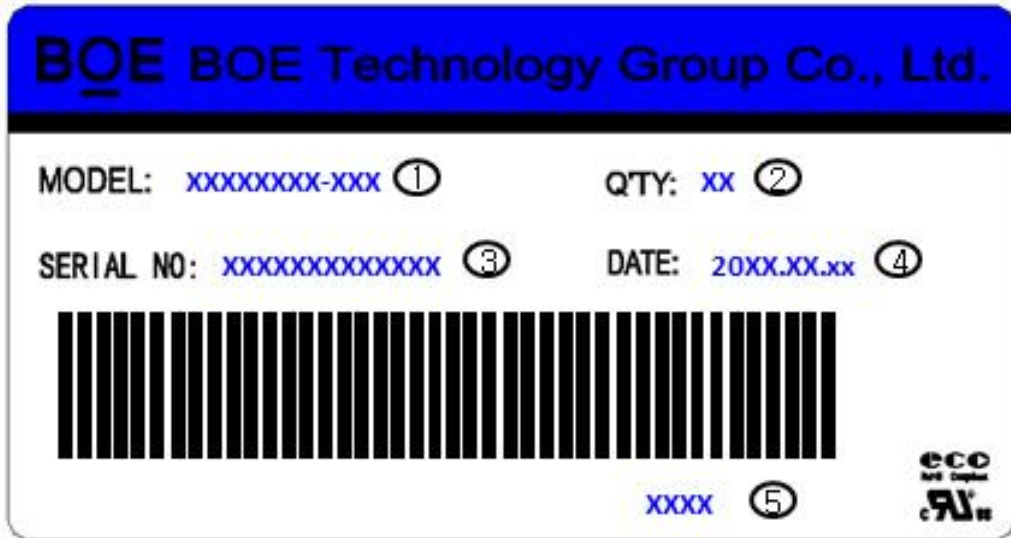


MDL ID 编码规则

序列号	1	2	3	4	5	6	7	8	9	10	11	12	13	14	15	16	17
代码	X	X	P	3	5	2	7	X	X	X	X	0	0	1	E	E	J
描述	生管指定		等级 S,A,P,Q 等	工厂 B3	年	月	FG Code后四位				流水码 36进制(无I和O)						

年: 2015—15, 2016—16 2020---20, 2021---21.....
 月: 1~12月→ 1~9, X, Y, Z

(2) Box label



Serial number marked part needs to print, show as follows:

1. FG-CODE(Before 12 bit) : GV101FHM-N10
2. Product quantity
3. Box ID
4. Date
- 5.FG-Code After four---4850

Total Size: TBD

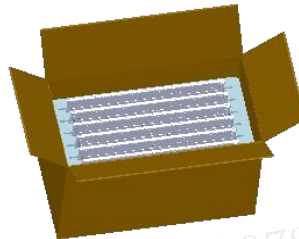
13.0 PACKING INFORMATION

将 EPE Bottom 放入纸箱内

将 LCM 装入 PE 袋中，并沿产品边缘折叠，依次放入 Bottom 对应的卡槽内



Step 1



Step 2

将 EPE Cover 盖在 Bottom 上，再将纸箱用胶带封装

将封装好的纸箱放到木托上，回字形排布



Step 3



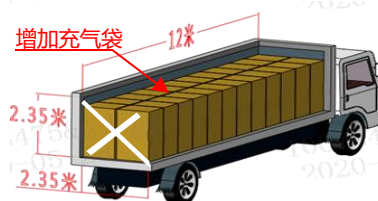
Step 4

放置8ea纸护角，用缠绕裹包（≥3层）再用打包带“井”字形固定

厢车装载方式：两横摆放，单层码放



Step 5



Step 6