

MACCHIATObin Single Shot Datasheet

Marvell ARMADA A8040™ based development board



Embedded Edge Computing

SolidRun Ltd.

7 Hamada st.,
Yokne'am Illit, 2069201, Israel

Overview

The Marvell MACCHIATObin is a first-of-its-kind Cost-Effective and High-Performance networking community development board targeting OpenDataPlane (ODP), OpenFastPath (OFP) and ARM network functions virtualization (NFV) ecosystem communities.

With a software offering that include a fully open source ODP implementation, U-Boot 2015.x, mainline U-Boot, UEFI EDK2, Linux LTS kernel 4.4.x, mainline Linux, Yocto 2.1 and netmap, the Marvell MACCHIATObin is an optimal platform that community developers and Independent Software Vendors (ISVs) can use for development around ODP and OFP and for delivering ARM based VNFs.

MACCHIATObin Single Shot Highlighted Features

- ✿ Based on Marvell's A8040 Quad Core
- ✿ Arm Cortex A72 processor (up to 1.6Ghz)
- ✿ Up to 16GB DDR4
- ✿ Dual 10GbE SFP
- ✿ 3 x SATA 3.0 connectors
- ✿ Feature rich



MACCHIATObin

System Specifications

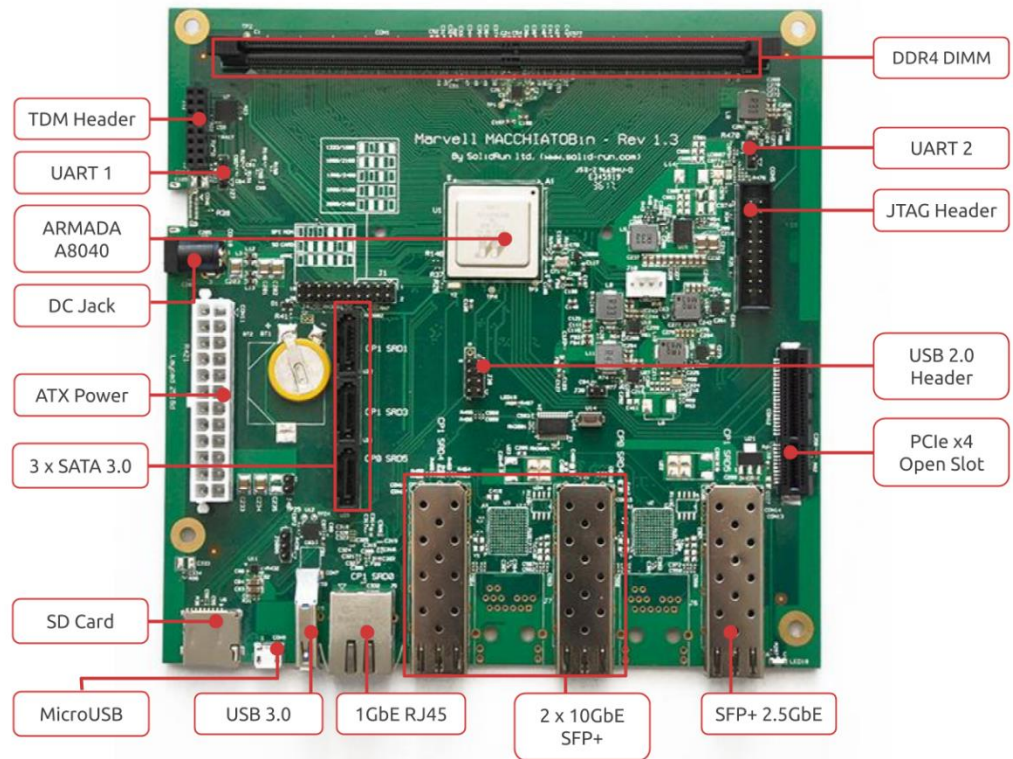
MACCHIATObin Single Shot		
Processor	Marvell A8040 Arm Cortex A72 quad-core (1.6GHz)	
Memory and Storage	Up to 16GB DDR4 DIMM 3 x SATA 3.0 MicroSD eMMC	
Network	2 x 10GbE SFP 1 x 2.5GbE SFP 1 x 1GbE RJ45	
Connectivity	PCIe x4 gen 3.0 (open slot) USB 2.0 header (internal) USB 3.0 connector	
I/O	UART header JTAG header TDM header MicroUSB for debug (UART over USB)	
Power	12V input via DC jack / ATX type power connector	
Software	Mainline Linux Linux Kernel 4.4.x Mainline U-Boot U-Boot 2015.11 UEFI (Linaro UEFI tree) Yocto 2.1 SUSE Linux netmap DPDK OpenDataPlane (ODP) OpenFastPath	
Environment	Ambient temp. (commercial):	0°C to 70°C
	Enclosed ambient temp. (commercial):	0°C to 40°C
	CPU die temp. (commercial):	0°C to 105°C
	Ambient temp. (industrial):	-40°C to 85°C
	Enclosed Ambient temp. (industrial):	-40°C to 55°C
	CPU die temp. (industrial):	-40°C to 105°C
	Humidity (non-condensing): 10% - 90%	
Dimensions (WxL)	170mm x 170mm (Mini ITX)	
Enclosure	Optional metal enclosure	

Available SKUs for MACCHIATObin Single Shot

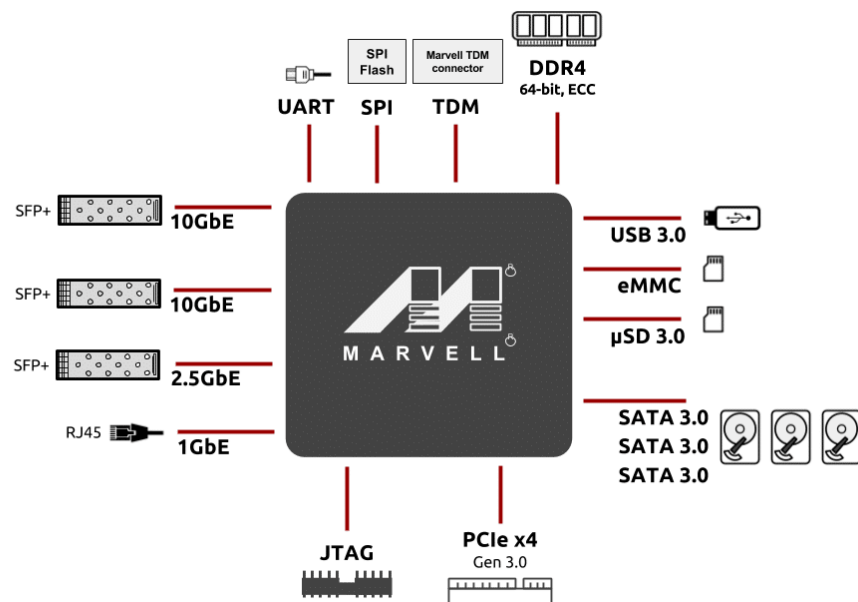
SKU	Description
SRM8040S00D04GE008S00CH	MACCHIATObin Single Shot 4GB DDR 8GB eMMC Com. Temp R00 Inc. Heatsink
SRM8040S00D16GE008S00CH	MACCHIATObin Single Shot 16GB DDR 8GB eMMC Com. Temp R00 Inc. Heatsink

(*) Different configurations available for MOQ

MACCHIATObin Single Shot Layout



MACCHIATObin Single Shot Diagram



Safety Notice

- a. This device is to be used with Certified Power adaptor with output rated 12VDC, 1.5A. Power adapter must meet Limited power source (LPS) requirements.
- b. Power adapter must meet local safety standards and requirements based on product intended use.
- c. Power adapter must meet Operating environment conditions as specified above.

Disposal

Follow local regulations regarding disposal of the product. Dispose of your product in accordance with local regulations. In some areas, the disposal of these items in household or business trash may be prohibited.

Help us protect the environment- recycle!

IMPORTANT NOTICE – Please Read Carefully

No warranty of accuracy is given concerning the contents of the information contained in this document. To the extent permitted by law no liability (including liability to any person by reason of negligence) will be accepted by SolidRun Ltd. or its employees for any direct or indirect loss or damage caused by omissions from or inaccuracies in this document.

SolidRun Ltd. Reserves the right to change details in this publication without notice product and company names herein may be the trademarks of their respective owners.

Information in this document supersedes and replaces information previously supplied in any prior versions of this document.

Support

For technical support please visit:

Developer center – <https://developer.solid-run.com/>

For direct support please contact us at: support@solid-run.com

Documentation

Additional documentation available at:

<https://developer.solid-run.com/products/macchiatobin-single-double-shot/>