

**PLEASE CHECK WWW.MOLEX.COM FOR LATEST PART INFORMATION**

**Part Number:** [0988171041](#)  
**Status:** **Active**  
**Overview:** NSCC - New Standard Casing Contact  
**Description:** NSCC Single Part, Unsealed, 1.50mm, Female Housing, 3.33mm Pitch NSCC, Wire-to-Wire, 4 Circuits, Black

**Documents:**

<a href="#">3D Model</a>	<a href="#">Application Specification 988210001-PS-CH-001 (PDF)</a>
<a href="#">Drawing (PDF)</a>	<a href="#">Application Specification AS-98821-001-001 (PDF)</a>
<a href="#">Product Specification PS-98821-001-001 (PDF)</a>	<a href="#">Packaging Specification PK-31301-635-001 (PDF)</a>
<a href="#">Application Specification 988210001-AS-CH-001 (PDF)</a>	<a href="#">RoHS Certificate of Compliance (PDF)</a>

**Application tooling part link**

Application Tooling Part Link 63813-3800

**General**

Product Family	Crimp Housings
Series	<a href="#">98817</a>
Application	Power, Wire-to-Wire
Overview	<a href="#">NSCC - New Standard Casing Contact</a>
Product Name	NSCC
UPC	822348760930

**Physical**

Breakaway	No
Circuits (maximum)	4
Circuits Detail	4 x 1.5mm female terminals
Color - Resin	Black
Gender	Receptacle
Glow-Wire Capable	No
Keying to Mating Part	Yes
Lock to Mating Part	Yes
Material - Resin	Polyester
Net Weight	2.480/g
Number of Rows	1
Packaging Type	Carton
Panel Mount	No
Pitch - Mating Interface	3.33mm
Pitch - Termination Interface	3.33mm
Polarized to Mating Part	Yes
Ports	1
Temperature Range - Operating	-40° to +100°C

**Electrical**

Current - Maximum per Contact 10.0A

**Solder Process Data**

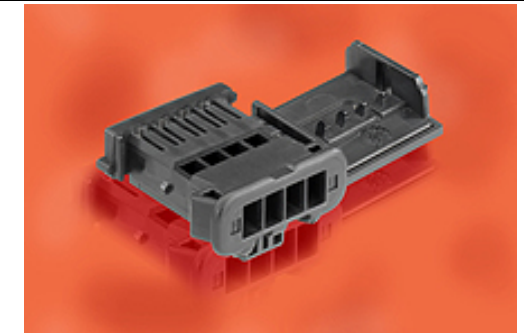
Lead-free Process Capability N/A

**Material Info**

Engineering Number 010201321

**Reference - Drawing Numbers**

Application Specification	988210001-AS-CH-001, 988210001-PS-CH-001, AS-98821-001-001
Packaging Specification	PK-31301-635-001



Series image - Reference only

**EU ELV  
Compliant**

**EU RoHS  
Compliant**

**REACH SVHC**

Not Contained Per -  
D(2020)4578-DC (25  
June 2020)

**Halogen-Free**

**Status**

**Not Relevant**

For more information, please visit [Contact US](#)

China ROHS

ELV

RoHS Phthalates

**China RoHS**

Not Relevant

Compliant

Not Contained

**Search Parts in this Series**

[98817](#) Series

**Mates With**

[988221041](#) Male Receptacle Housing

**Use With**

Female Terminal [NSCC 988971109](#) ,  
[988971119](#) , [988971129](#) or FCI Female  
Terminal 1.5 Sicma 3

**Application Tooling | FAQ**

*Tooling specifications and manuals are found by selecting the products below. Crimp Height Specifications are then contained in the Application Tooling Specification document.*

**Global**

**Description**

**Product #**

Extractor Tool for	<a href="#">638133800</a>
Unsealed Receptacle Connectors	

This document was generated on 12/23/2020

**PLEASE CHECK [WWW.MOLEX.COM](http://WWW.MOLEX.COM) FOR LATEST PART INFORMATION**