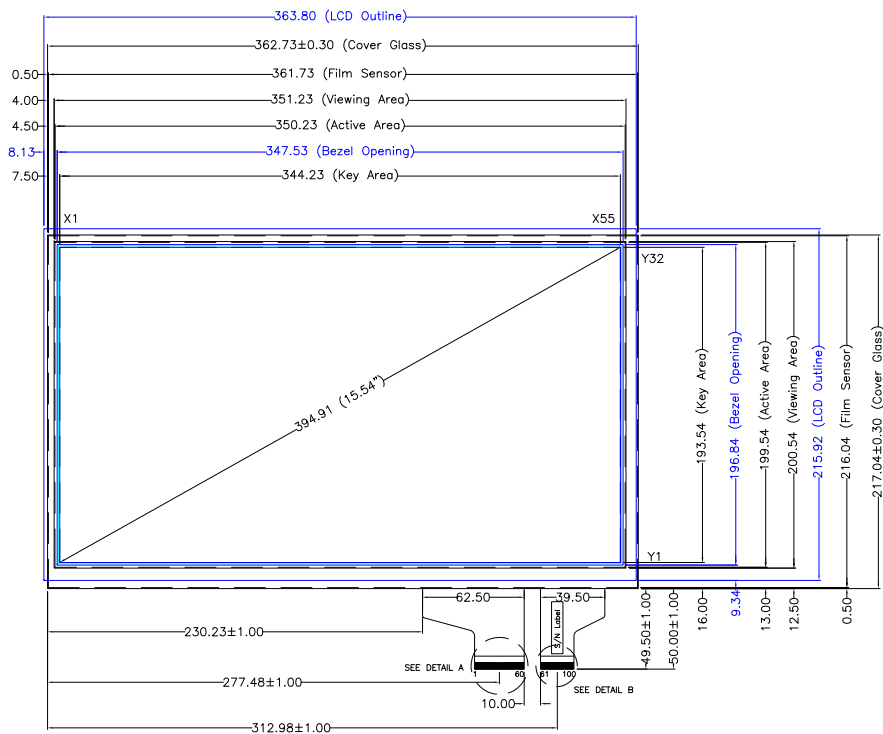
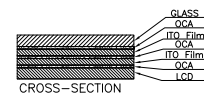
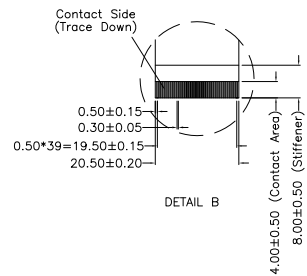
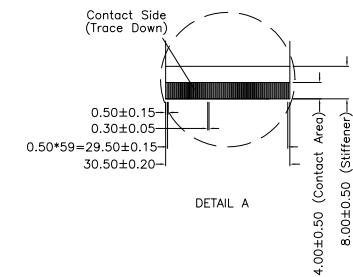
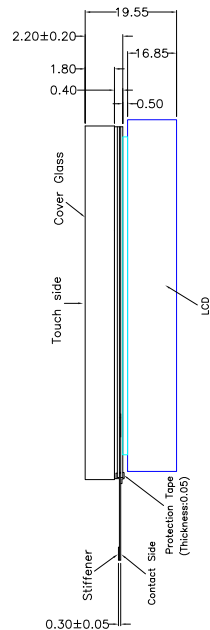
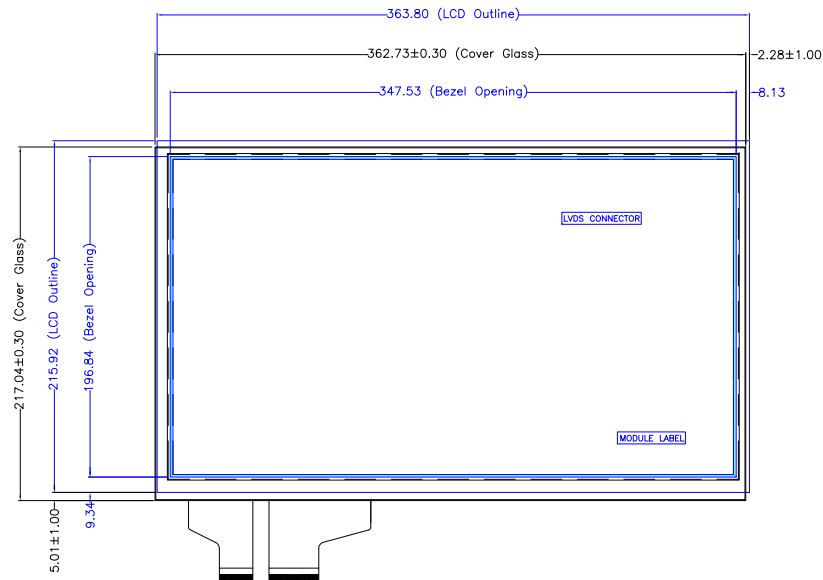


TOUCH SIDE VIEW



RAER SIDE VIEW



PIN#	Assignment
1	GND
2	NC
3-57	X1-X55
58	NC
59-60	GND
61	GND
62	NC
63-94	Y1-Y32
95-99	NC
100	GND

- NOTES:
- OVERALL THICKNESS : 19.55mm (FOR REFERENCE ONLY)
 - LCD : INNOLUX G156BGE L01
 - TOUCH PANEL : 92-P3023-A2B-F01
 - PROCESS : DRY BONDING



NO.	DATE	DESCRIPTION	CHK
REVISION			
CHIEF OF DESIGN		APPROVED	Arthur
DRAWN BY	Bruce	DATE	2019.04.17
SHEET 1 OF 1			

Apex Material Technology Corp.

TOLERANCES UNLESS SPECIFIED		DWG NO :
.X	± 0.50	AD-96-P3023-A2B-001-01
.XX	± 0.50	
.XXX	± 0.30	SCALE: N/S UNIT: mm
ANGULAR	.	