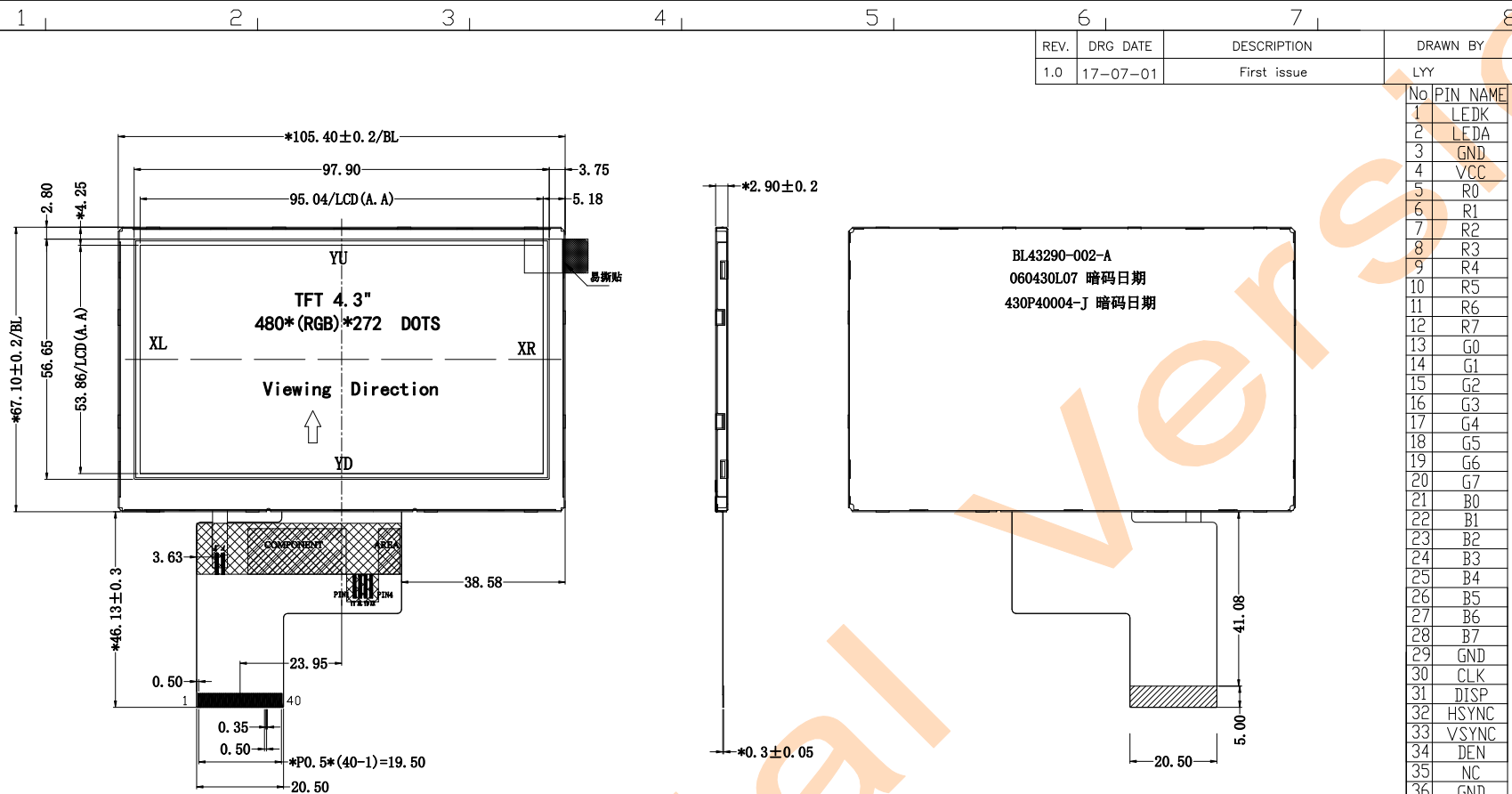


# LCM示例



Specification:

- . Viewing angle: 6 0' Clock
- . Display mode: 262K TFT/Transmissive/Normally White
- . Operating temp: -10° C~60° C
- . Storage temp: -20° C~70° C
- . LCD Driver IC:ST7282
- . FPC MEET WITH CONNECTOR:
- . Backlight: 7 chip White LED (If=20mA, Vf=21V)
- . General Tolerance: ±0.2
- . MARK "\*" IS THE IMPORTANT DIMENSION
- . ROHS Request

LED CIRCUIT DIAGRAM:



<b>深圳市福瑞达显示技术有限公司</b>					DRG DATE	
SHENZHEN FRIDA LCD CO., LTD					DRAWING	
TITLE.	<b>LCM OUTLINE</b>	REV.	UNIT	SIZE	CHECK	
MODEL.	FRD430P40004-J		mm	A4	APPROVE	

