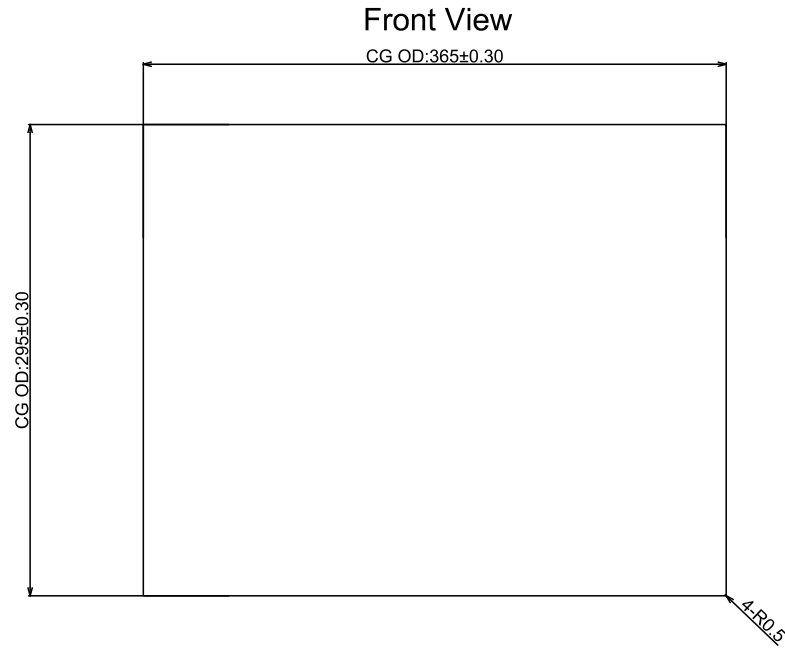
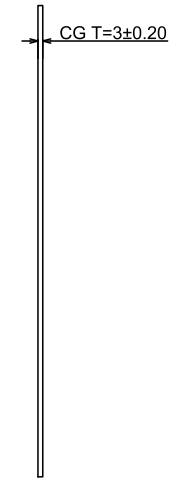


Ver.	Modify No.	Details	Area	P.I.C	Date



Side View



Technical Datasheet:

- Cover Glass: T=3mm, Clear Tempered Glass
Surface hardness $\geq 6H$
- Light transmittance: $\geq 85\%$
- Working Temperature: $-20^{\circ}C \sim +70^{\circ}C$, $\leq 85\%RH$;
- Storage Temperature: $-30^{\circ}C \sim +80^{\circ}C$, $\leq 85\%RH$;
- Unmarked Tolerance: ± 0.3 mm;
- All material used conform to RoHS standards

Part No.		BTP-CG-17-CLN-SN01			
Product Name: 17 inch Cover Glass		Drawing No.		C170230718SN01	
		Project Code.		23RL01	
Business Unit: SNT-BTP		Period Mark		View Angle	Ratio
		A			1:1
Designed by: Curry.Wang		BOM Code		1.01.170.01.0101	
Checked by: Betty.Fu		Product Series		BTP-CG	
Approved by: Cale.Chen		Standardization:		Link.Chen	
Workmanship:		Released by:		Rocky.Liu	
				思诺泰科创电子(苏州)有限公司 SINOTELECTRONICS INC.	