



SPECIFICATION FOR APPROVAL

Product: LCD Converter Board

Part No.	Customer Part No.	Description
RTD2556V3.0	BTP-LC-RTD2556V3.0	LCD Converter Board

www.sinotelectronics.com





.1 Product features

product	BTP-LC-RTD2556-V3.0	
model		
Screen panel	Drive screen interface	
	LVDS	6-bit LVDS and 8-bit LVDS Support for 1366 * 768@60Hz
		Double 8-bit LVDS and double 10-bit LVDS Support for 1920 * 1200@60Hz
	EDP	The 2-Lane EDP interface / the 4-Lane EDP interface Support for 1020 * 1080@60Hz
signal input	signal interface	
	VGA	Up To 1920*1200@60Hz
	DP	Up To 1920*1200@60Hz
	HDMI	Up To 1920*1080@60Hz
source	working voltage	9-28V



	Drive screen voltage	3.3V or 5V or 10V or 12V
	Power mode	Supports low-power mode, standby mode
	Standby power consumption	<1W
OSD language	English, Chinese, customized multilingual	
Key function	POWER, MENU, +/-, AUTO/EXIT	
ambient temperature	Operating temperature-10C° to + 70C° Storage temperature-20C° to + 80C°	
ambient humidity	Working humidity: the relative humidity is 10% to 90% Ambient humidity: the relative humidity ranges from 5% to 95%	

.2. Description of the interface definition



order number	interface specification
CN4	Power input socket interface
CN3	Backlit socket interface
CN5	5V output socket interface
CN11	The ADC control socket interface
CN8	The key board and the indicator light socket interface
CN7	Audio output socket interface
CN9	Serial port control socket interface
JN1	LVDS joggle
JN2	EDP joggle

1: CN4 power input socket interface

order number	Interface definition	order number	Interface definition
1	12V	3	GND
2	12V	4	GND

2: CN3 backlight socket interface

order number	Interface definition	order number	Interface definition
1	GND	4	EN
2	GND	5	12V



3	ADJ	6	12V
---	-----	---	-----

3: CN5 5V output socket interface

order number	Interface definition	order number	Interface definition
1	+5V	3	GND
2	+5V	4	GND

4: CN11 ADC control socket interface

order number	Interface definition	order number	Interface definition
1	+3.3V	3	ADC/IO
2	IO	4	GND

5: CN8 key board and indicator light socket interface

order number	Interface definition	order number	Interface definition
1	CH-	6	VOL+
2	CH+	7	GND
3	MENU	8	LED-G
4	SOURCE	9	LED-R
5	VOL-	10	POWER

6: CN7 audio output socket interface

order number	Interface	order number	Interface
--------------	-----------	--------------	-----------



	definition		definition
1	R-OUT+	3	L-OUT-
2	R-OUT-	4	L-OUT+

7: CN9 serial port control socket interface

order number	Interface definition	order number	Interface definition
1	GND	3	UART-TX
2	UART-RX	4	5V

8: JN1 LVDS interface

order number	Interface definition	order number	Interface definition
1	VCC	16	RX0C+
2	VCC	17	RX03-
3	VCC	18	RX03+
4	NC	19	RXE0-
5	GND	20	RXE0+
6	GND	21	RXE1-
7	RX00-	22	RXE1+
8	RX00+	23	RXE2-
9	RX01-	24	RXE2+
10	RX01+	25	GND



11	RX02-	26	GND
12	RX02+	27	RXEC-
13	GND	28	RXEC+
14	GND	29	RXE3-
15	RX0C-	30	RXE3+

9: JN2 EDP interface

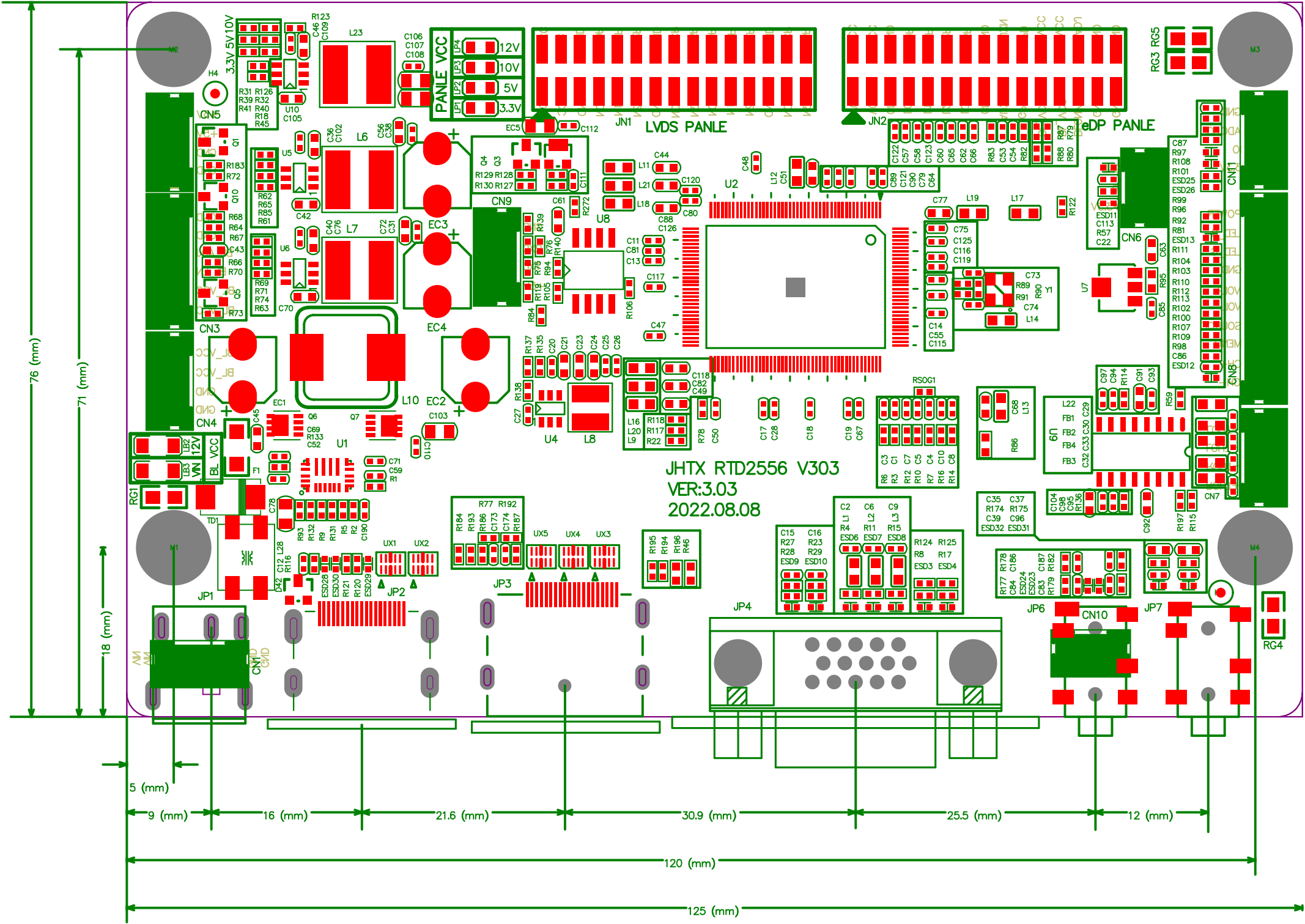
order number	Interface definition	order number	Interface definition
1	VCC	16	GND
2	VCC	17	AUXN
3	VCC	18	AUXP
4	VCC	19	HPD
5	GND	20	HPD
6	GND	21	BL-VCC
7	LOP	22	BL-VCC
8	LON	23	BL-VCC
9	L1P	24	BL-VCC
10	L1N	25	ADJ
11	L2P	26	ON/OFF
12	L2N	27	GND
13	L3P	28	GND



14	L3N	29	GND
15	GND	30	GND

www.sinotelectronics.com





JHTX RTD2556 V303
VER:3.03
2022.08.08

76 (mm)

71 (mm)

18 (mm)

5 (mm)

9 (mm)

16 (mm)

21.6 (mm)

30.9 (mm)

25.5 (mm)

12 (mm)

120 (mm)

125 (mm)