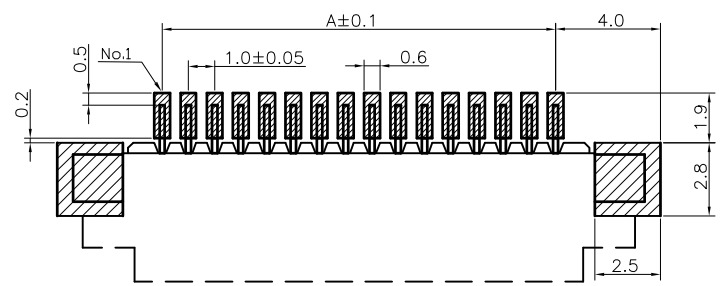
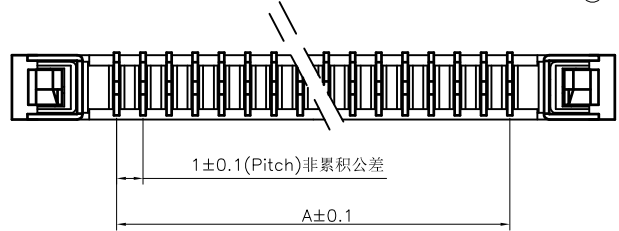
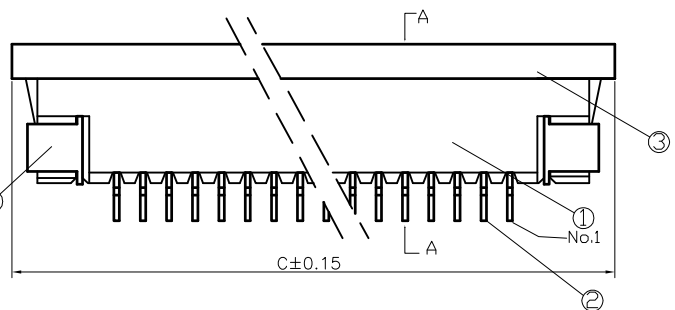
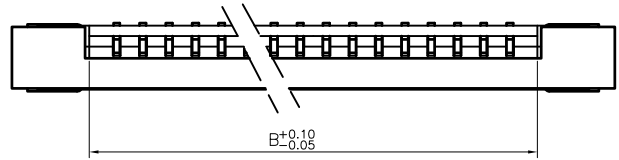
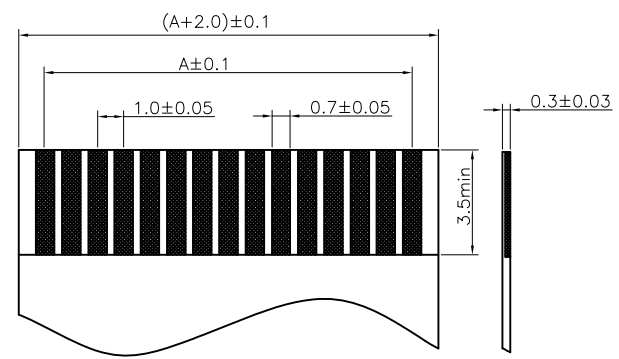
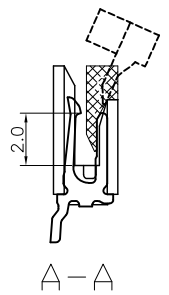


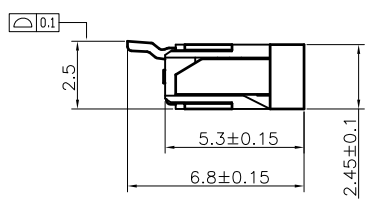
REV.	LOCAS.	DESCRIPTION	DATE	DRAWN
01	NEW	BATCH PRODUCTION INITIAL RELEASE.	2021.04.06	钟建虾



适用FPC寸法
RECOMMENDED PCB LAYOUT



通用FPC寸法
APPLICABLE FPC



CFCD108 - XX XX A 006 C X A X -06

No. of Pins per Row 04~40

Standard Plating
01=Tin
Selective Plating
22=Matte Tin

Color
2=White
1=Black

Standard Packing
D=Tape&Reel
Selective Packing
C=Tube

NOTES:
1. MATERIAL: SEE TABLE;
2. PLATING :SEE PART NUMBER
3. RATING
3-1. OPERATING TEMPERATURE:-25°C~±85°C
3-2. OPERATING VOLTAGE: 125V AC/DC
3-3. CURRENT RATING: 1.0 AMPS
3-4. DIELECTRIC WITHSTANDING VOLTAGE:
500V AC/Minute;
3-5. INSULATION RESISTANCE:500MΩ Min;
3-6. CONTACT RESISTANCE:0.03Ω Max;
All materials must meet GREENCONN hazardous substances control standards.

No. of PIN/ROW	Dimension Information			No. of PIN/ROW	Dimension Information			No. of PIN/ROW	Dimension Information		
	Dim.A	Dim.B	Dim.C		Dim.A	Dim.B	Dim.C		Dim.A	Dim.B	Dim.C
04	3	5.06	11	17	16	18.06	24	30	29	31.06	37
05	4	6.06	12	18	17	19.06	25	31	30	32.06	38
06	5	7.06	13	19	18	20.06	26	32	31	33.06	39
07	6	8.06	14	20	19	21.06	27	33	32	34.06	40
08	7	9.06	15	21	20	22.06	28	34	33	35.06	41
09	8	10.06	16	22	21	23.06	29	35	34	36.06	42
10	9	11.06	17	23	22	24.06	30	36	35	37.06	43
11	10	12.06	18	24	23	25.06	31	37	36	38.06	44
12	11	13.06	19	25	24	26.06	32	38	37	39.06	45
13	12	14.06	20	26	25	27.06	33	39	38	40.06	46
14	13	15.06	21	27	26	28.06	34	40	39	41.06	47
15	14	16.06	22	28	27	29.06	35				
16	15	17.06	23	29	28	30.06	36				

序号	名称	材料	数量	附注
4	焊片 Fitting Nail	磷青铜 Phosphor Bronze	2	电镀(铜): 整个表面镀底镍30u"MIN,再镀锡 80u"MIN.
3	铁脚 Actuator	LCP (UL94V-0)	1	黑色
2	端子 Contact	磷青铜 Phosphor Bronze	nx1	电镀(铜): 整个表面镀底镍30u"MIN,再镀锡 80u"MIN.
1	基座 Housing	LCP (UL94V-0)	1	本色

Greenconn
Website: www.greenconn.com
E-mail: sales@greenconn.com

3RD.ANG PROJ.	GENERAL TOLERANCE	DESIGNED: 钟建虾	DATE: 2021.04.06
PAGE. 1/1	X.*±/ X.±0.30	CHECKED: 方秋香	DATE: 2021.04.06
	.X*±/ .X±0.25		
	.XX*±/ .XX±0.12		
	.XXX*±/ .XXX±0.10		

APPROVED: 方秋香	DATE: 2021.04.06
---------------	------------------

DWG. NO.	TITLE.
CFCD108-CA6CA	1.0 FPC CONN.
PART NO.	ZIF SMT FRONTFLIP
CFCD108-XXXXA006CXAX-06	H=2.5 LOWER CONTACT