

Material :

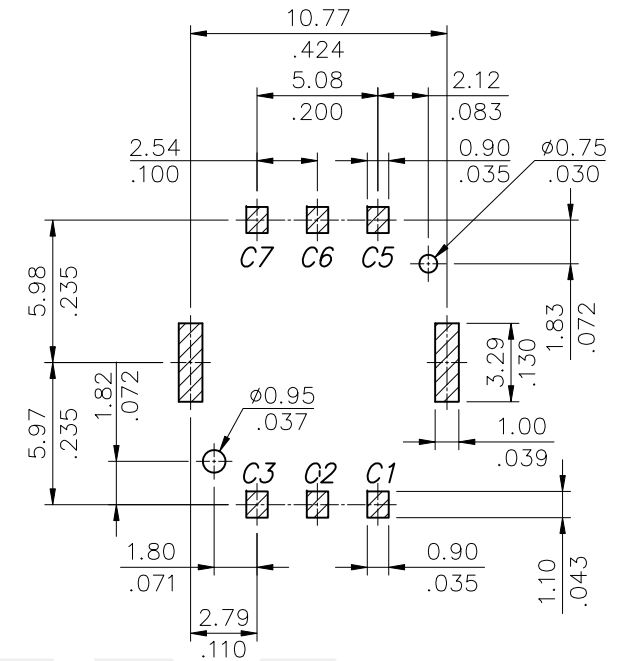
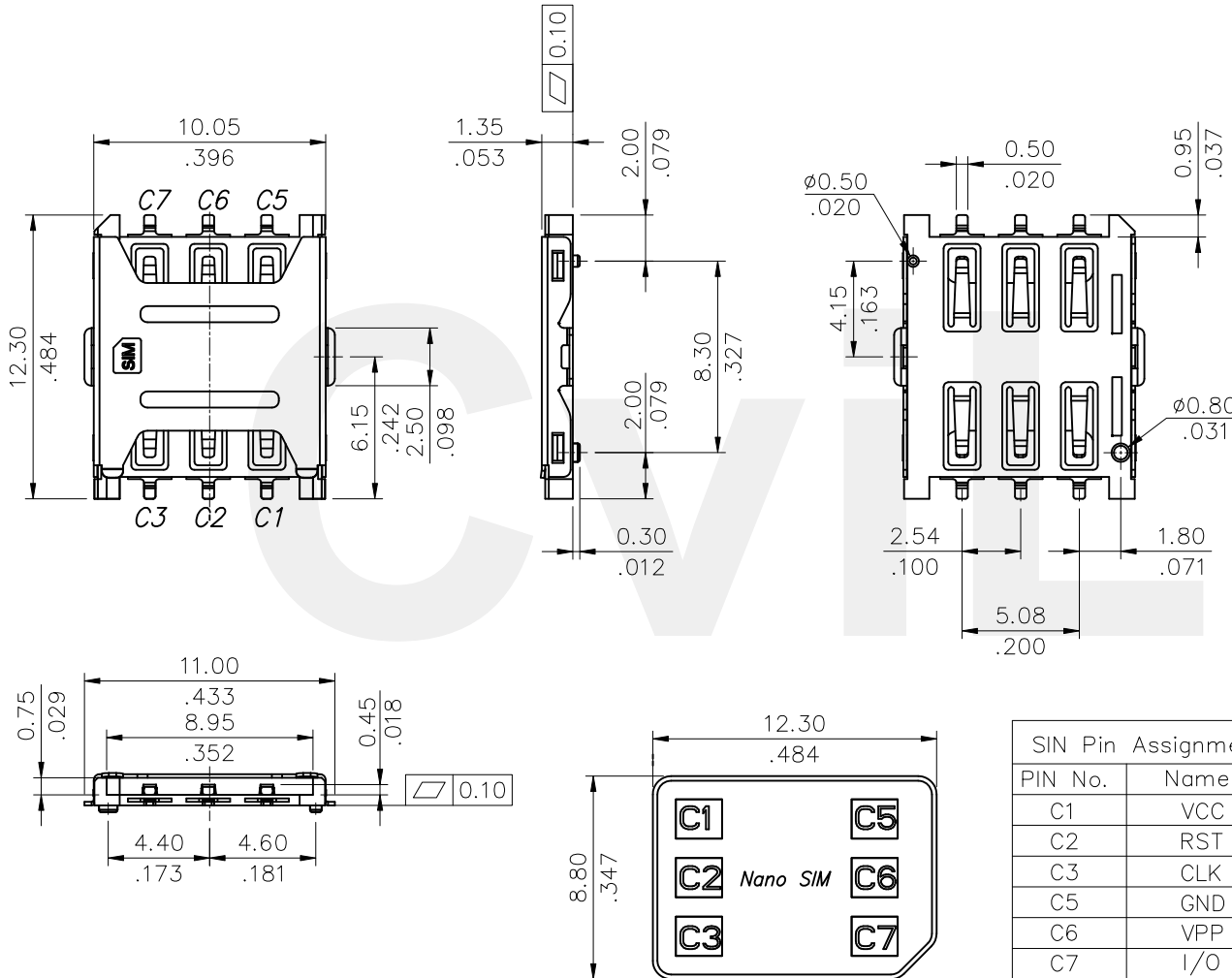
*Base: High temperature thermoplastic UL 94V-0, Color Black

*Contact: Copper Alloy, thickness 0.15mm

*Shell: SUS

Plating :

*Shell: Gold Plated on PAD area, 50u" Nickel Plated overall



RECOMMEND PCB LAYOUT(TOP VIEW)
TOLERANCE: ±0.05

Ordering Code:

CSM3 06 2 1 D 02 -LF
① ② ③ ④ ⑤ ⑥ ⑦

- ① Series No.
- ② No. of contacts
- ③ Plating option:

2= Gold Flash Plating on Contact area, and Solderails, Nickel Underplating over all

- ④ Insulator Color: 1= Black
- ⑤ D= H: 1.35mm
- ⑥ 02= Standard
- ⑦ -LF= For Lead Free

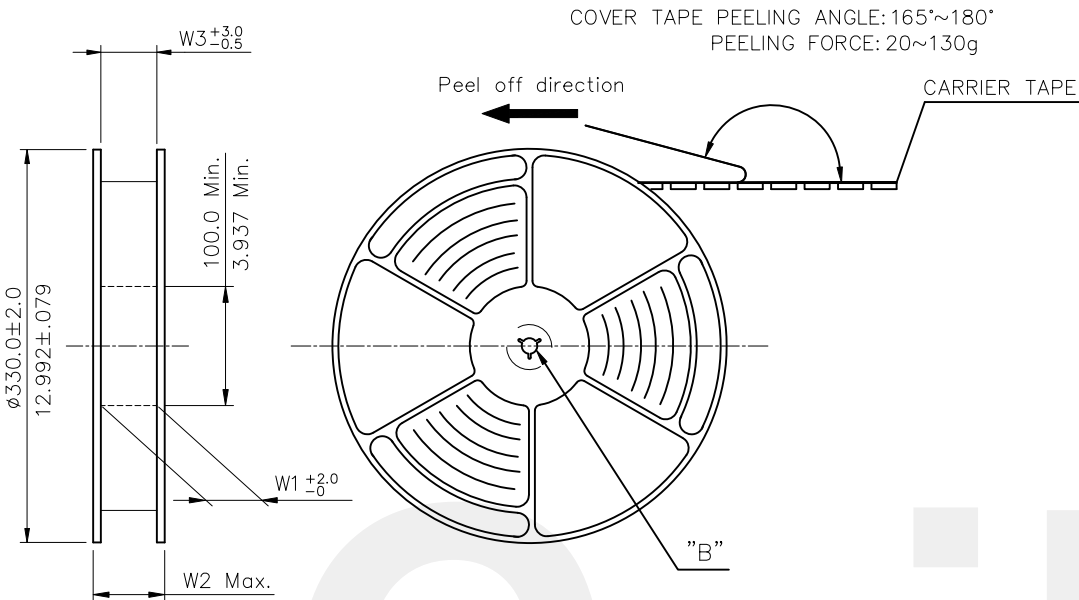
IR Reflow Processes

SIN Pin Assignment	
PIN No.	Name
C1	VCC
C2	RST
C3	CLK
C5	GND
C6	VPP
C7	I/O

Lead Free Process
RoHS Compliant

④					DATE	UNIT: mm / inch	TITLE:	瀚荃股份有限公司 CviLux Corporation
③					DRAWN BY: Sandy	TOLERANCE UNLESS OTHERWISE SPECIFIED	NANO-SIM 1.35H	
②					ENGINEER: Sandy	.X ± 0.15/.016 X* ± 2'	MATERIAL:	
①					CHECKED BY: Eisley	.XX ± 0.10/.004 .X* ±	FINISH:	
SYM	NAME	DATE	REVISIONS	APPROVED BY: Eisley	8/26-21'	.XXX ± 0.05/.002 .XX* ±		DRAWING NO. CSIM-41SA PART NO. CSM30621D02-LF
								SCALE 3 / 1 SHEET 1 OF 2

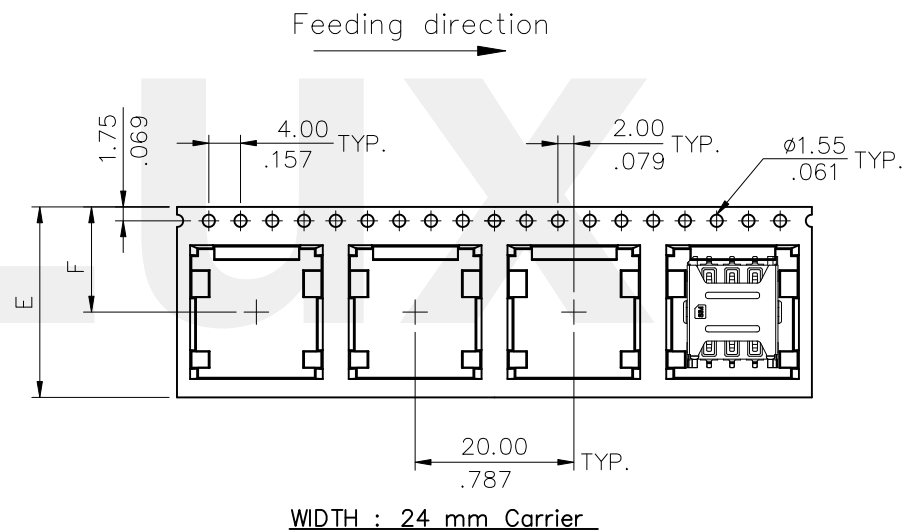
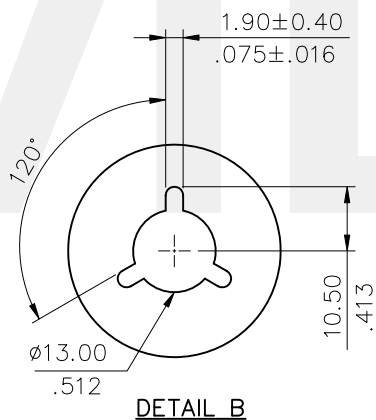
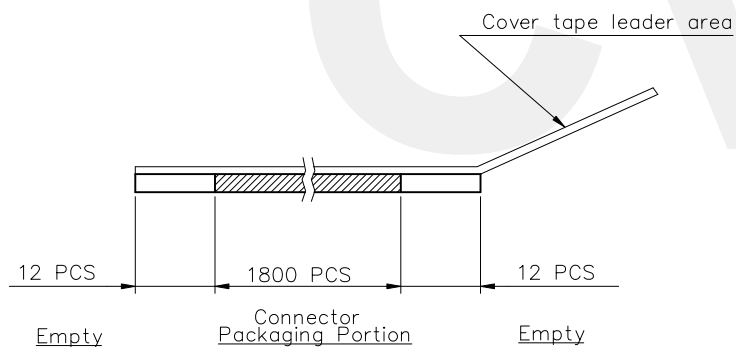
CVILUX COUP
2021.09.02
ISSUED



NOTE :

- * Reel Material : PS
- * Carrier Material : Clear PET
- * Cover Tape Material : PET
- * Carrier camber is within 1mm in 250mm
- * Cover Tape Peel Strength : 0.1N – 1.3N
- * All dimensions meet EIA-481-B requirements.
- * Quantity : 1800 PCS/Reel, 11 Reel/Carton

Circuits	Dimension				
	E	F	W1	W2	W3
6	24.00(.945)	13.25(.522)	24.5(.965)	30.5(1.200)	24.5(.965)



RoHS Compliant

SYM	NAME	DATE	REVISIONS	APPROVED BY:	DATE	UNIT: mm / inch	TITLE: 1.27MM(.050") STRAIGHT DUAL ROW BORAD MOUNT PIN HEADER	 瀚荃股份有限公司 CviLux Corporation	DRAWING NO.	CSIM-41SA	PART NO.	CSM30621D02-LF
4										SCALE		SHEET
3												
2												
1												

CVILUX COUP
 2021.09.02
 ISSUED