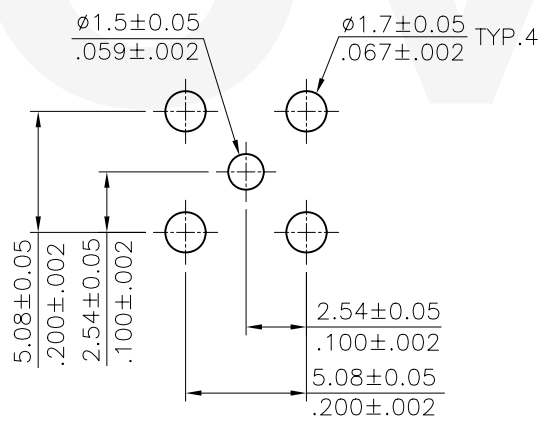
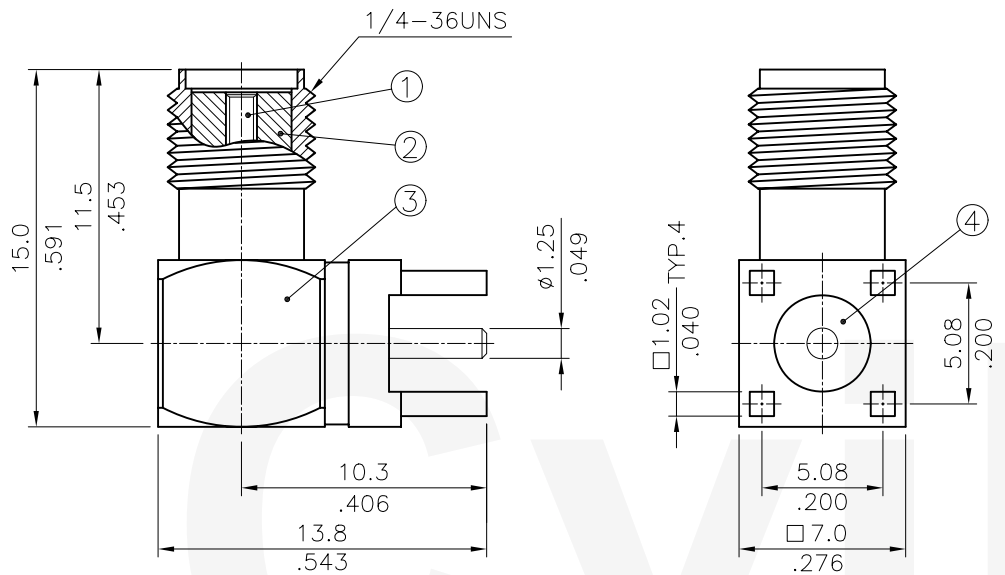
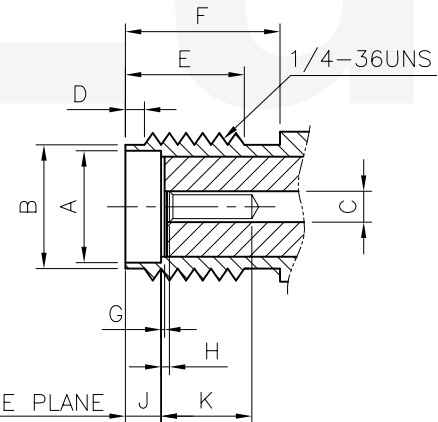


No.	DESCRIPTION	MATERIAL	FINISH	Q'TY
1	CONTACT	BRASS	GOLD PLATED	1
2	INSULATOR	TEFLON	-	1
3	BODY	BRASS	GOLD PLATED	1
4	INSULATOR	TEFLON	-	1



Recommended P.C. Board Layout



Interface Mating Dimensions

DIM.	Min.	Max.
A	4.60(.181)	4.67(.184)
B	5.28(.208)	5.49(.216)
C	1.24(.049)	1.30(.051)
D	0.38(.015)	1.14(.045)
E	4.32(.170)	-
F	5.54(.218)	-
G	0.00	0.25(.010)
H	0.00	0.25(.010)
J	1.88(.074)	1.98(.078)
K	2.92(.115)	-

Specifications:

Electrical

- Impedance: 50Ω
- Frequency Range
  - 0-12.4 GHz on Flexible cable
  - 0-18.0 GHz on Semi-rigid cable
- Working Voltage: 250 VRMS Max.
- Dielectric Withstanding Voltage: 750 VRMS Min.
- VSWR: 1.5 Max.
- Contact Resistance
  - Center contact: 6mΩ Max.
  - Outer Contact: 2mΩ Max.
- Insulator Resistance: 5000MΩ Min.

Mechanical & Environmental

- Engagement Force: 2 in-lbs. Max.
- Disengagement Force: 2 in-lbs. Max.
- Coupling Nut Retention: 60 lbs. Min.
- Coupling Proof Retention: 15 in-lbs. Min.
- Contact Retention: 6 lbs. Min.
- Durability (Mating): 500 cycles Min.
- Temperature Range: -65°C to 165°C
- Vibration: MIL-STD-202 Method 204 Test Cond.B
- Salt Spray: MIL-STD-202 Method 101 Test Cond.B
- Thermal Shock: MIL-STD-202 Method 107 Test Cond.B

RoHS Compliant

4					DATE	UNIT: mm / inch	TITLE: SMA SERIES RIGHT ANGLE PCB MOUNT TYPE JACK CONN.	 瀚荃股份有限公司 CviLux Corporation
3				DRAWN BY: Sun	3/13-08'	TOLERANCE UNLESS OTHERWISE SPECIFIED	MATERIAL:	
2				ENGINEER: Eisley	3/13-08'	X. ±0.50/.020 X: ± 1'	FINISH:	
1				CHECKED BY: David	3/14-08'	.X ±0.30/.012 .X: ±		
SYM	NAME	DATE	REVISIONS	APPROVED BY: Alex	3/14-08'	.XX ±0.15/.006 .XX: ±		

DRAWING NO.	CR0105SA	PART NO.	CR01S04225000
SCALE	3 / 1	SHEET	1 OF 1