

# Product information – OpDAT CM system



## System description

The OpDAT CM system serves to terminate high performing loose tube cables in 19" racks. The possibilities of use range from fixed network cabling to campus cabling up to data center cabling. The modular system allows a gradual expansion

depending on the need and expansion of the network. Furthermore, mixed equipment with different connector and fiber types is possible within a system.

## Specifications of system components

### OpDAT CM Subrack 19" 3+1RU/84HP

- Aluminum subrack frame (19 inch/3+1RU/84HP) with integrated transfer tray (1RU) to be mounted in 19-inch racks
- Accepts up to 12 compact modules 3RU/7HP with up to 144 ports on 3RU (288 ports by using compact modules with 6xLC-Quad)
- Transfer tray to accommodate loose tube excess lengths and to store unused loose tubes, can be pulled-out backwards, with cable manager and 5 cable brackets
- With fastening brackets for loose tubes
- With protection plate for the entry section of the loose tubes
- Fixing dimension: 465 mm (18.307 in.)
- Mounting dimension: WxHxD 19 inch x 4RU x 295 mm (483 x 176 x 295 mm / 19.016 x 6.929 x 11.614 in.)

### OpDAT CM Compact modules 3RU/7HP

- Compact modules are ready to mount, prefabricated inserts and serve to terminate loose tubes with 12 or 24 fibers
- Front panel made of silver anodized aluminum, with numbered adapter positions
- Mounting plate made of steel, equipped with splice tray and overlength tray, each with a cover
- Fixing in the subrack by captive screws
- Fully equipped with 12 simplex or 6 duplex adapters and 12 pigtails. Compact modules with 6 LC-Quad adapters have 24 pigtails
- Semi-tight buffered pigtails dia. 0.9 mm, length 2.0 m, 12 colors; inserted and stripped in standard splice tray with crimp splice holder

### OpDAT CM Accessories

- **Accessorie kit 1** to install 4 compact modules (or 2 compact modules with LC-Q) to one loose tube cable with 4x12 fibers with a loose tube diameter of max. 2.3 mm
- Label strip for cable manager
- **Accessorie kit 2** to install 4 compact modules (or 2 compact modules with LC-Q) to one loose tube cable each with 1x12 fibers with a loose tube diameter of max. 2.8 mm
- Blank cover 3RU/7HP to cover unused module slots

Variants

Subrack

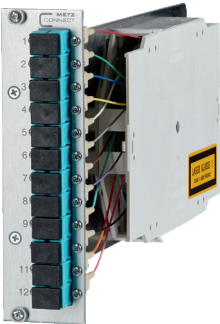


Accessories



Compact module

SC



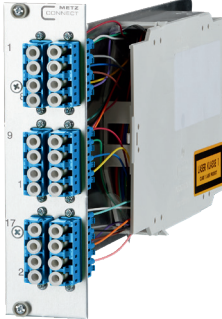
SC-D



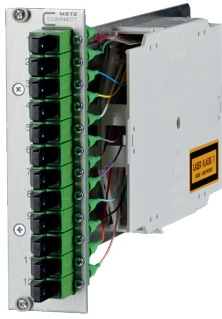
LC-D



LC-Q



E2000

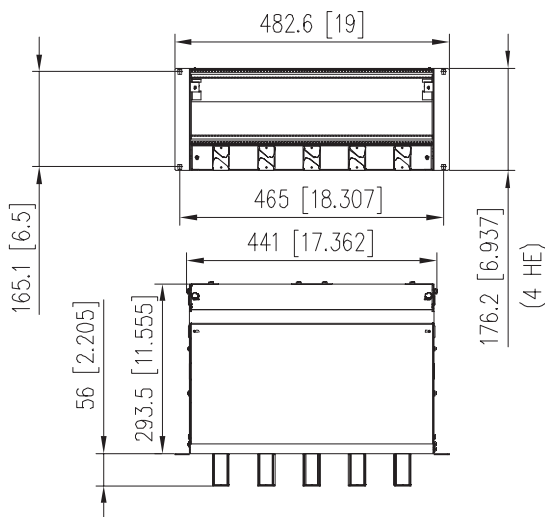


## Order information

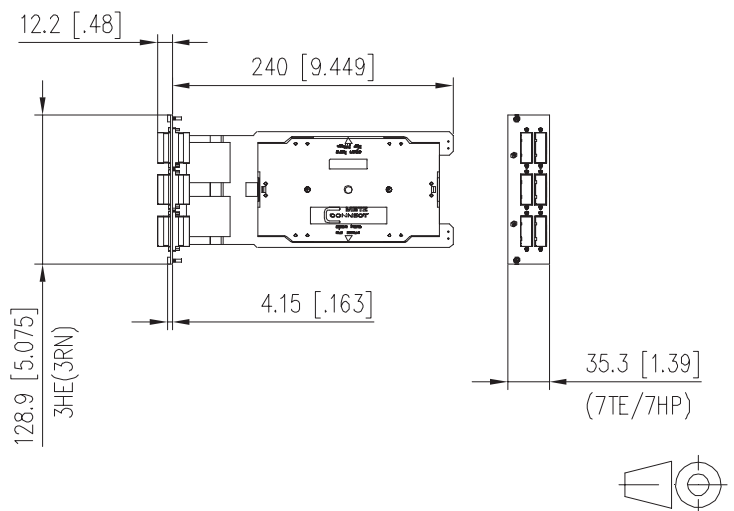
SUBRACK		P/N.
OpDAT CM subrack frame (19 inch/3+1RU/84HP) with integrated transfer tray		1528SBGT19-E
ACCESSORIES		P/N.
OpDAT CM accessorie set 1		
<ul style="list-style-type: none"> <li>&gt; for 4 compact modules (2 compact modules with LC-Q)</li> <li>&gt; for loose tube cables 4x12 with a loose tube diameter of max. 2.3 mm</li> </ul>		1528SZ001-E
OpDAT CM accessorie set 2		
<ul style="list-style-type: none"> <li>&gt; for 4 compact modules (2 compact modules with LC-Q)</li> <li>&gt; for loose tube cables 1x12 with a loose tube diameter of max. 2.8 mm</li> </ul>		1528SZ002-E
Label strip for cable manager		130894-BS-29-E
Cover plate 3RU/7HP		130810-01-E
Crimp splice protection		Packing Unit 12 pieces
		15090401-E

## Dimensional drawing

Subrack



compact module

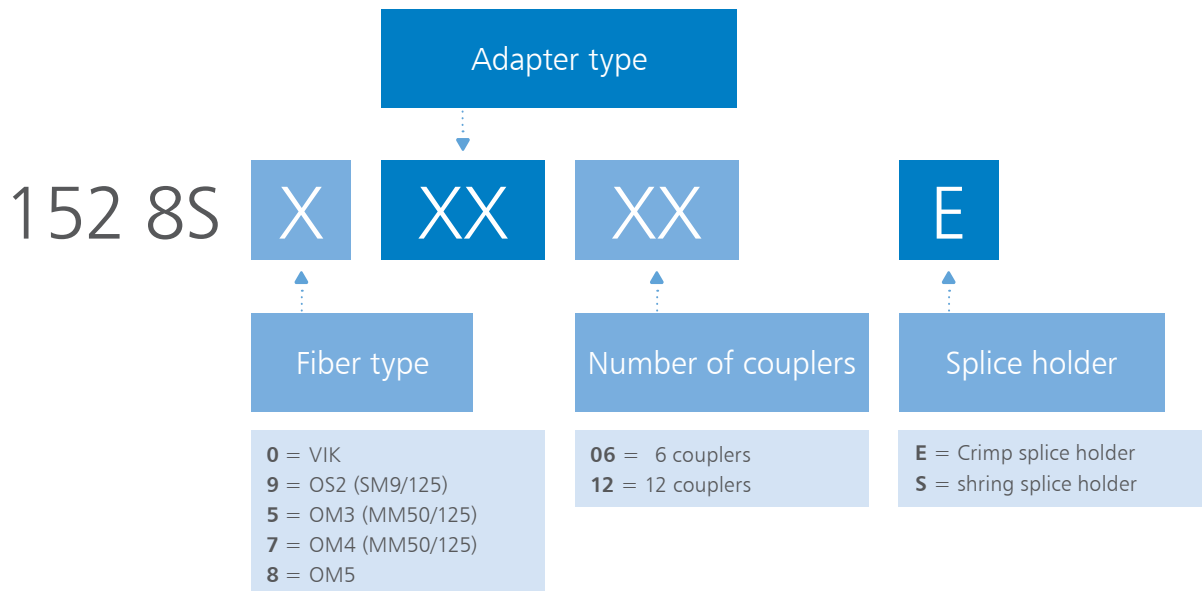


## Order information

**74** = LC-D UPC, SM, blue  
**76** = LC-D APC, SM, green  
**7M** = LC-D APC, OM5, lime green  
**75** = LC-D, OM4, violet  
**77** = LC-D, OM3, aqua  
**E2** = SC-D UPC, SM, blue  
**F2** = SC-D APC, SM, green

**BM** = SC-D, OM5, lime green  
**BB** = SC-D, OM5, violet  
**BA** = SC-D, OM3, aqua  
**D1** = ST-D, SM+MM, metal  
**58** = E2000-S UPC, SM, blue  
**59** = E2000-S APC, SM, green

**7P** = LC-D UPC Grade B, SM, blue  
**7N** = LC-D APC Grade B, SM, green  
**BP** = SC-D UPC Grade B, SM, blue  
**BN** = SC-D APC Grade B, SM, green



METZ CONNECT GmbH is a member of the following organizations and associations.



#### METZ CONNECT USA Inc.

200 Tornillo Way  
Tinton Falls, NJ 07712  
USA  
Phone +1-732-389-1300  
Fax +1-732-389-9066

#### METZ CONNECT France SAS

28, Rue Schweighaeuser  
67000 Strasbourg  
France  
Phone +33 3886 170 73  
Fax +33 3886 194 73

#### METZ CONNECT Zhongshan Ltd.

Ping Chang Road  
Ping Pu Industrial Park  
Sanxiang Town  
Zhongshan City, 528463  
Guangdong Province  
China  
Phone +86 760 86365 055  
Fax +86 760 86365 050

#### METZ CONNECT Asia Pacific Ltd.

Suite 1803, 18/F  
Chinachem Hollywood Centre,  
1 Hollywood Road, Central  
Hong Kong  
Phone +852 26 027 300  
Fax +852 27 257 522

#### METZ CONNECT GmbH

Im Tal 2  
78176 Blumberg  
Germany  
Phone +49 7702 533-0  
Fax +49 7702 533-189  
info@metz-connect.com  
www.metz-connect.com

