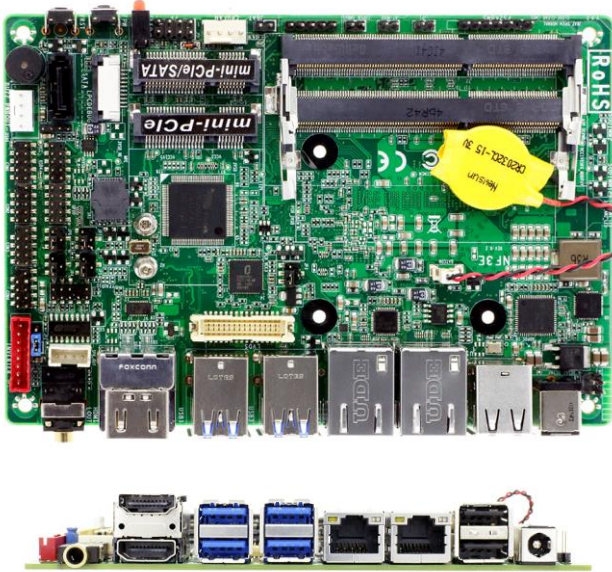
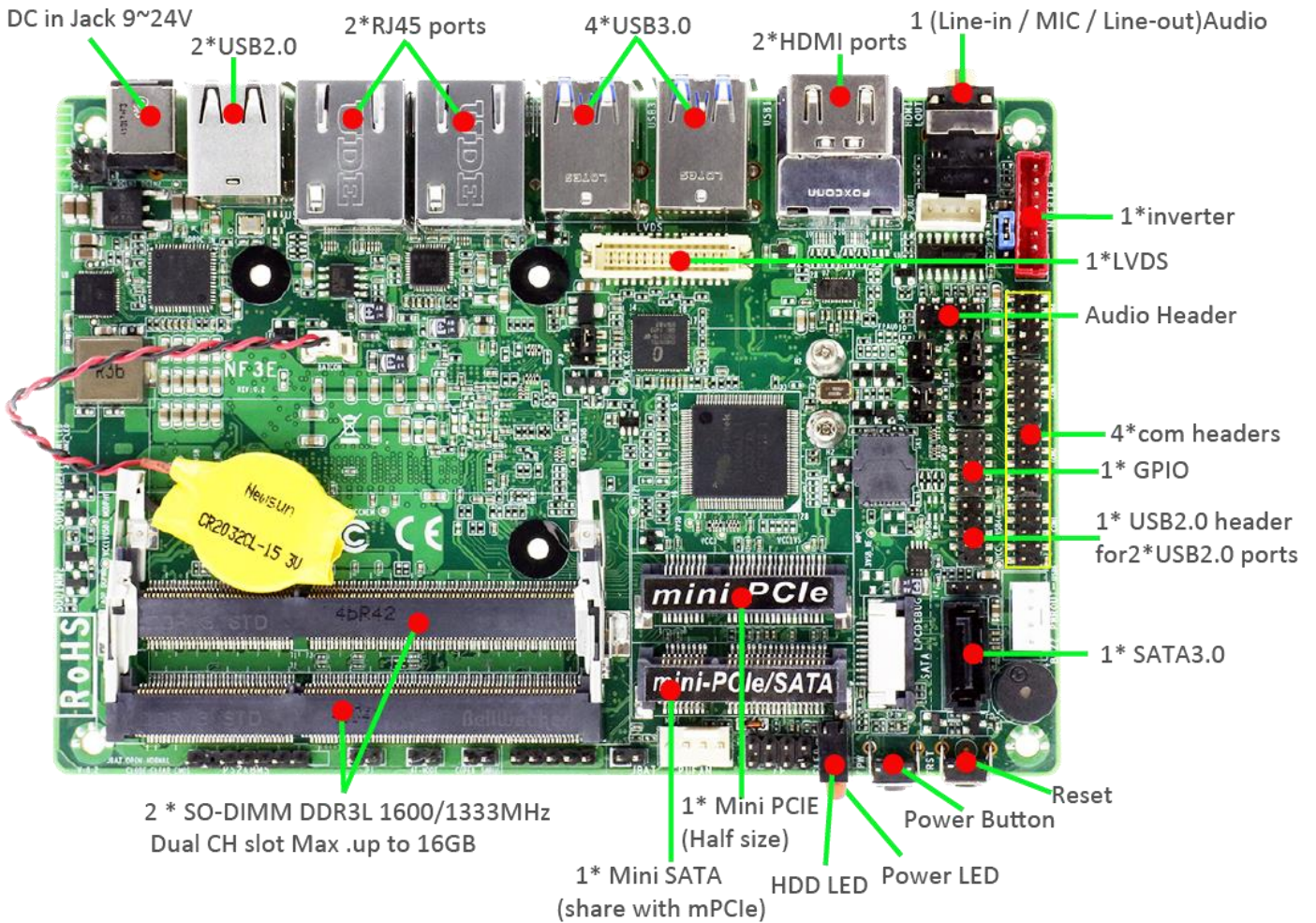


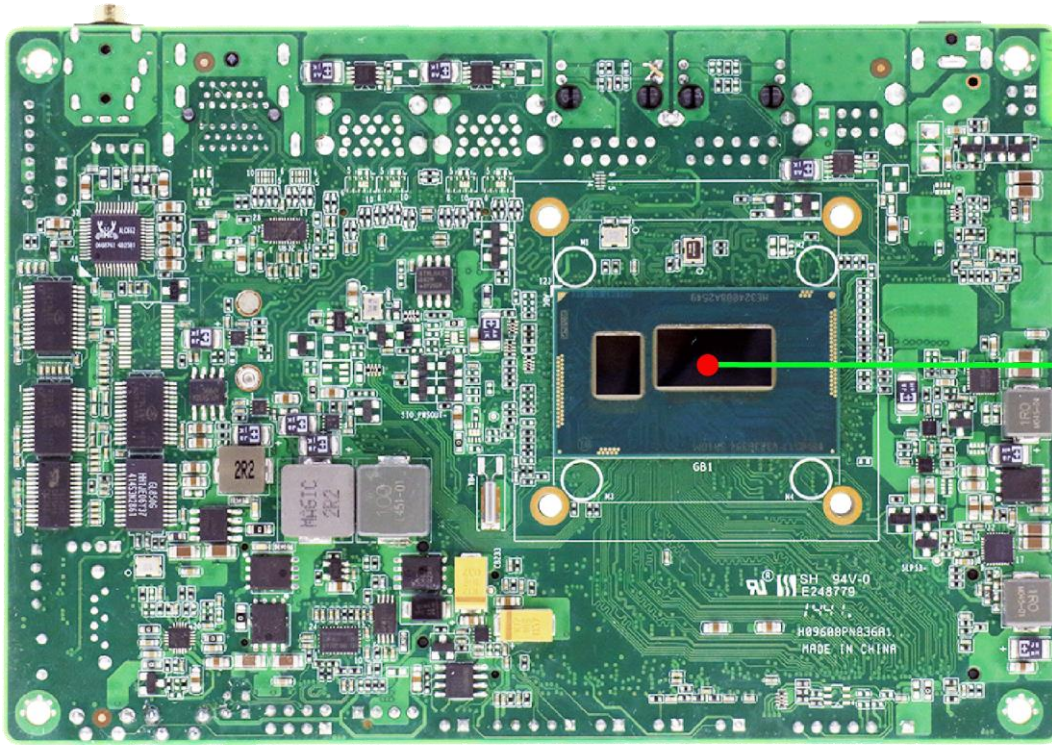
**3.5" SBC Motherboard**

**NF3E Series**



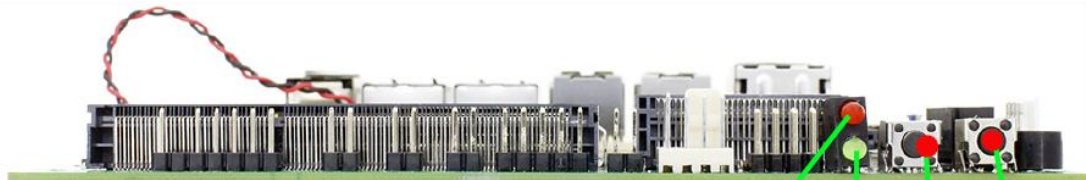
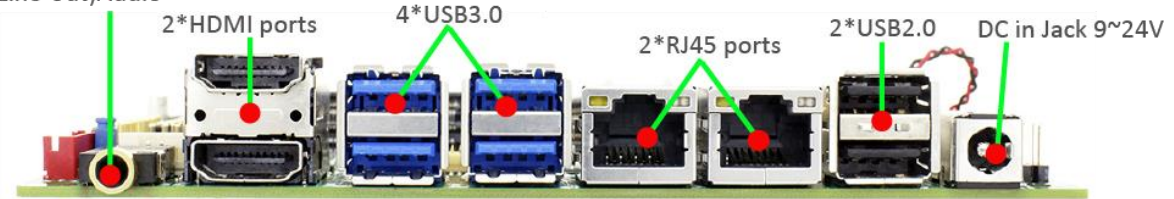
1. Intel® Haswell-U SoC Processor
2. Support 2\* DDR3L 1333/1600MHz up to 16GB
3. Support 1 \* Serial ATAIII (6Gb/s) Device
4. Integrated Realtek ALC662 HD Audio CODEC W/2-CH
5. 1 \* 24-bits Dual Channel LVDS header
6. 5 \* USB 2.0, 4 \* USB 3.0, 4 \* COM
7. 2 \* HDMI Outputs
8. Supports 2 \* Intel i211AT + i218LM Gigabit LAN
9. Support CPU Smart FAN
10. Support Watch Dog Timer 0~255 sec
11. +9~24V DC-in PWR jack
12. 148 \* 102mm 3.5" SBC Form Factor





INTEL® Haswell  
SoC Processor

1 (Line-out)Audio



HDD LED    Power LED    Reset  
Power Button

## Product Specifications

Form Factor	
Dimensions	- 3.5" SBC ( 148 * 102 mm )
Processor System	
CPU	- INTEL® Haswell-U (default i5-4300U Processor)
Core Number	- 4300U : 2
Max Speed	- 4300U : 2.9GHz
L2 Cache	- 4300U : 3MB
Chipset	- SoC
BIOS	- AMI 128Mb SMT Flash ROM
Expansion Slot	
Mini-PCIe	- 1 (full size, shared with mSATA) + 1 (half size)
mSATA	- 1 (shared with full size Mini PCIe)
Memory	
Technology	- Dual Channel DDR3L 1333/1600MHz SDRAM
Max.	- 16GB
Socket	- 2 * SODIMM
Graphics	
Controller	- Intel® HD Graphics
VRAM	- Shared Memory
LVDS	- 1 * onboard 24-bits Dual channel connector
HDMI	- 2
Multi Display	- Yes (Triple Displays)
Ethernet	
Ethernet	- 10/100/1000 Mbps
Controller	- GbE LAN: Intel i211AT + i218LM
Connector	- 2 x RJ 45
SATA	
Max Data Transfer Rate	- 1 * SATAIII (6.0Gb/s)
Rear I/O	
HDMI	- 2
Ethernet	- 2
USB	- 6 (2 * USB 2.0 + 4 * USB 3.0)
Audio	- 1 (Line-out)
DC-input	- 1
Internal Connector	
USB	- 3 ( 3 * USB 2.0 )
PS2	- 1

LVDS / inverter	- 1
Serial	- 4 (3 * RS-232, 1 * RS-232/422/485 with 5V/12V selectable header)
SATA	- 1 * SATAIII (6.0Gb/s)
mPCIe	- 1 (full size, shared with mSATA) + 1 (half size)
mSATA	- 1 (shared with mPCIe)
GPIO 8-bit	- 4in / 4 out
Chassis intrusion	- 1 (via 2pin header)
Audio Header	- 1 ( Line-out & MIC )
TPM	- 1 (on board option)
<b>Watchdog Timer</b>	
Output	- From Super I/O to drag RESETCON#
Interval	- 256 segments, 0,1,2...255sec/min
<b>Power Requirements</b>	
Input PWR	- +9~24V DC-In jack (2-pin PWR Con)
Power On	AT/ATX Supported - AT : Directly PWR on as Power input ready - ATX: Press Button to PWR on after Power input ready
<b>Certifications</b>	
Certifications	- CE, FCC, RoHS, REACH
<b>Environment</b>	
Temperature	- Operating: 0°C ~ 60°C
	- Storage: -20°C – 85°C

- For further information please visit the website at <http://www.jetwayipc.com>
- The Specification may be changed without further notice.

Product Accessories				
Parts	SATA cable	SATA Power cable		
P/N	G01-SATA3-BL-1F	G01-PW4PS-2S-323F		

Product Application					
V	Panel PC (工業平板電腦)	V	Medical (醫療)		POE/Surveillance (安防監控)
V	Commercial (商業應用)	V	POS/KIOSK (零售系統)	V	Power (電力系統)
V	Banking (銀行金控)	V	Industrial Automation (工業自動化)		Mobile (移動系統)
V	Military (軍方應用)	V	Transportation (交通)		Storage(Nas) (存儲系統)
V	Digital Signage (數字標牌)		Telecom (通訊)		I.O.T(物聯網)
V	Gaming (博奕)		Networking (網絡應用)	V	AIO(一体機)