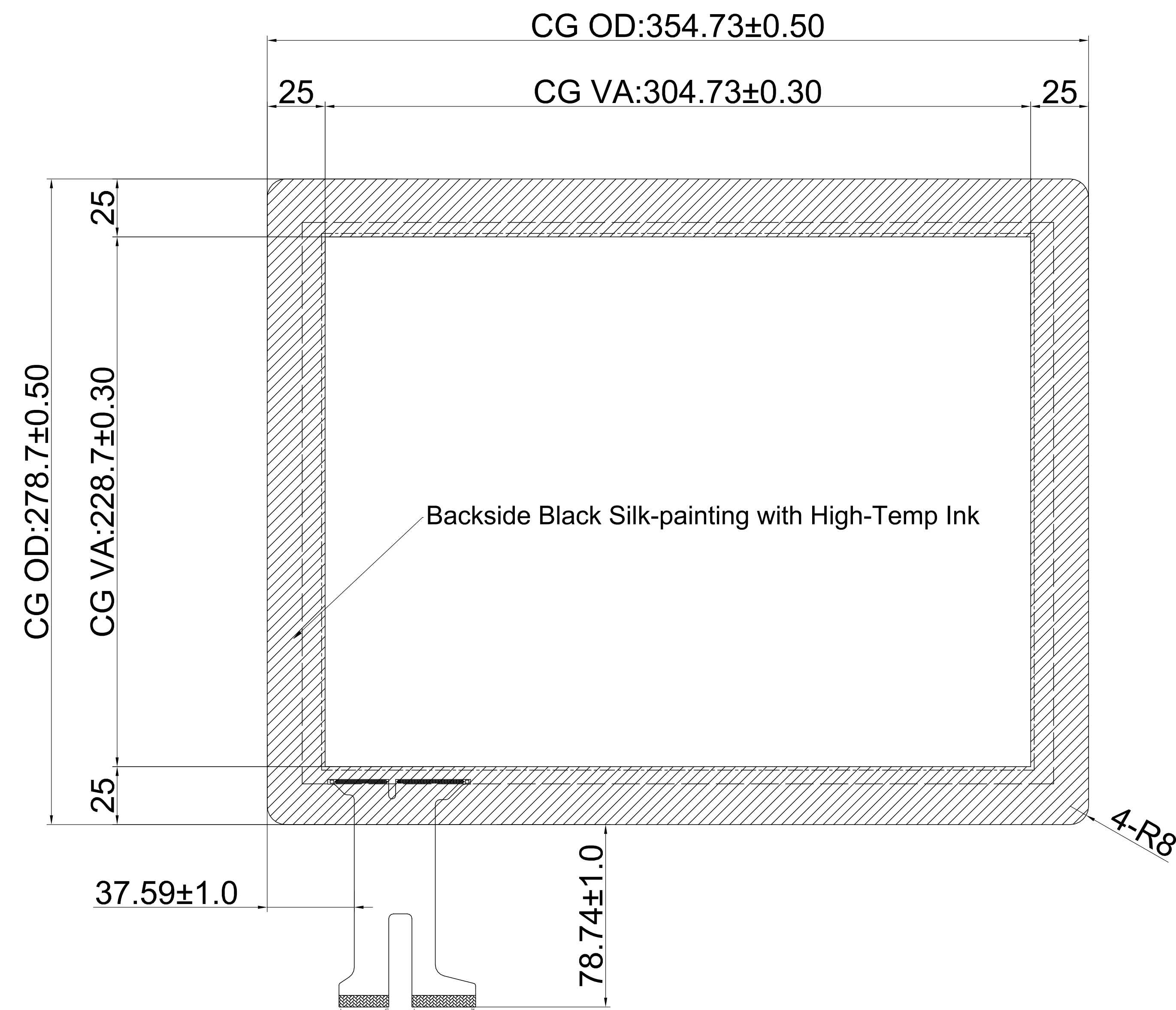
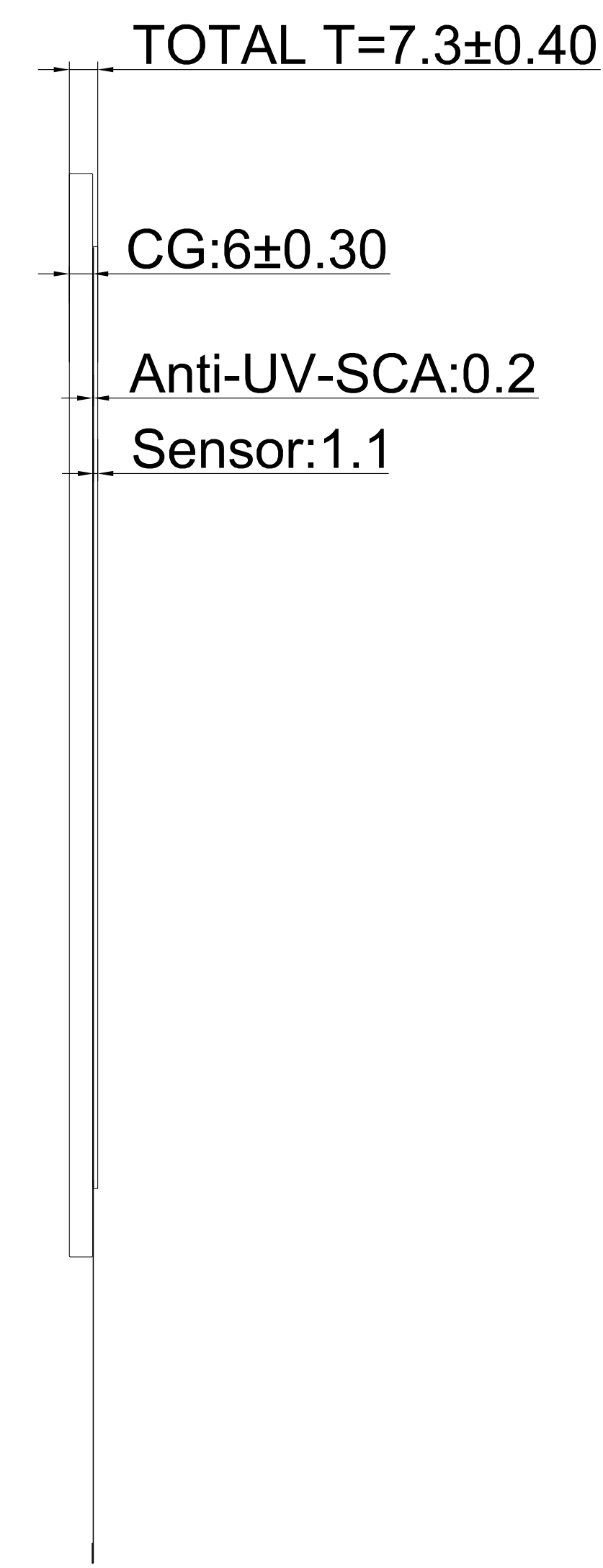


| Ver. | Modify No. | Details | Area | P.I.C | Date |
|------|------------|---------|------|-------|------|
| | | | | | |
| | | | | | |
| | | | | | |

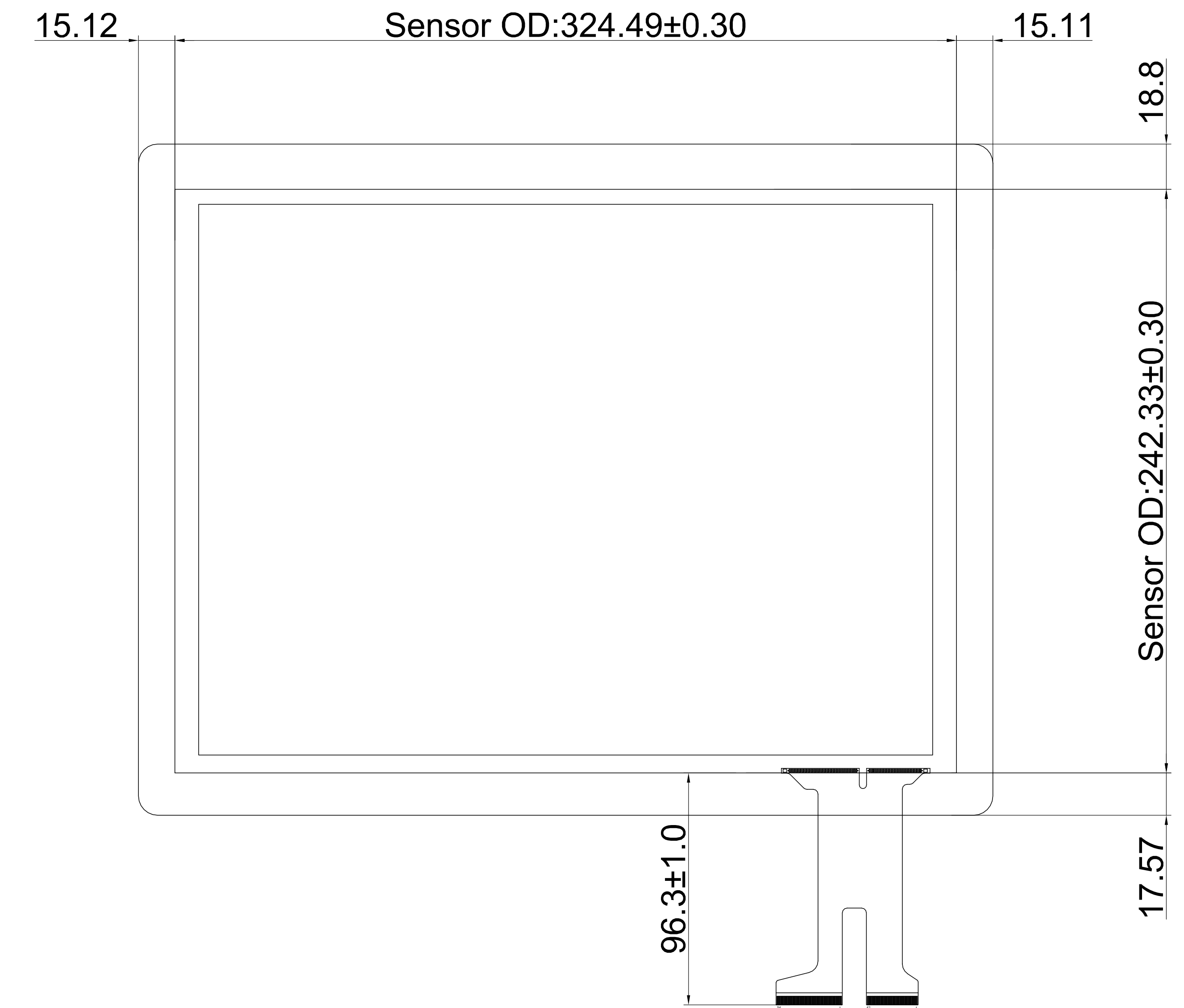
Front View



Side View

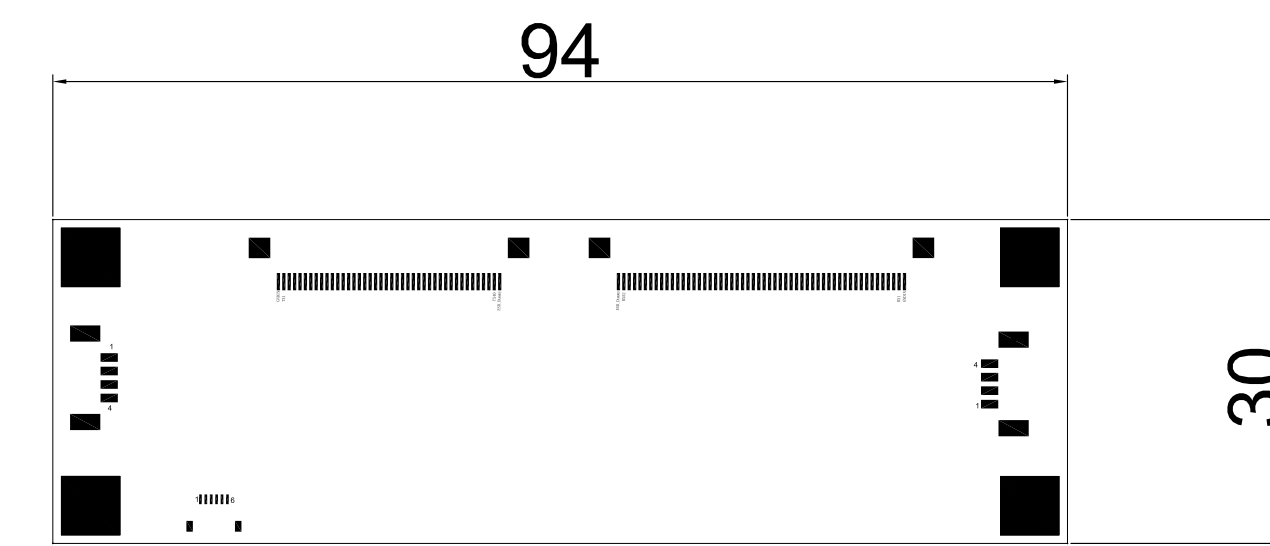


Back View



Technical Datasheet:

1. Structure: Cover Glass+SCA+ITO Glass
2. Controller: BTP-GG-CTR-ILI-150B-SN09 COB
3. Controller IC: ILI2510 C3P2V1
4. Cover Glass: T=6mm, Surface hardness ≥6H
5. Light transmittance: ≥85%
6. Working Temperature: -20°C~+80°C, ≤85%RH;
7. Storage Temperature: -30°C~+80°C, ≤85%RH;
8. Unmarked Tolerance: ± 0.3 mm;
9. All material used conform to RoHS standards



CONTROLLER
SC 2:1

USB interface

| | |
|---|---------|
| 1 | VDD +5V |
| 2 | D- |
| 3 | D+ |
| 4 | GND |

| | |
|------------------|------------|
| Designed by: | Curry.Wang |
| Checked by: | Rocky.Liu |
| Approved by: | Cale.Chen |
| Workmanship: | Elite.Bai |
| Standardization: | Link.Chen |
| Released by: | Rocky.Liu |

| | | | | | |
|---------------------|------------------|-------------------------------------|----------------|-------|--|
| Part No. | | BTP-GG-TPB-15-ILI-SN09 | | | |
| Product Name: | | Drawing No. | G150240424SN09 | | |
| 15 inch Touch Panel | | Project Code. | G150SN09 | | |
| Business Unit: | | Period Mark | View Angle | Ratio | |
| SNT-BTP | | A | | 1:1 | |
| BOM Code | 1.03.150.01.0109 | Page 1 | Total 1 Page | | |
| Product Series | BTP-GG | 思诺泰科创电子(苏州)有限公司 SINOTRONICS INC. | | | |