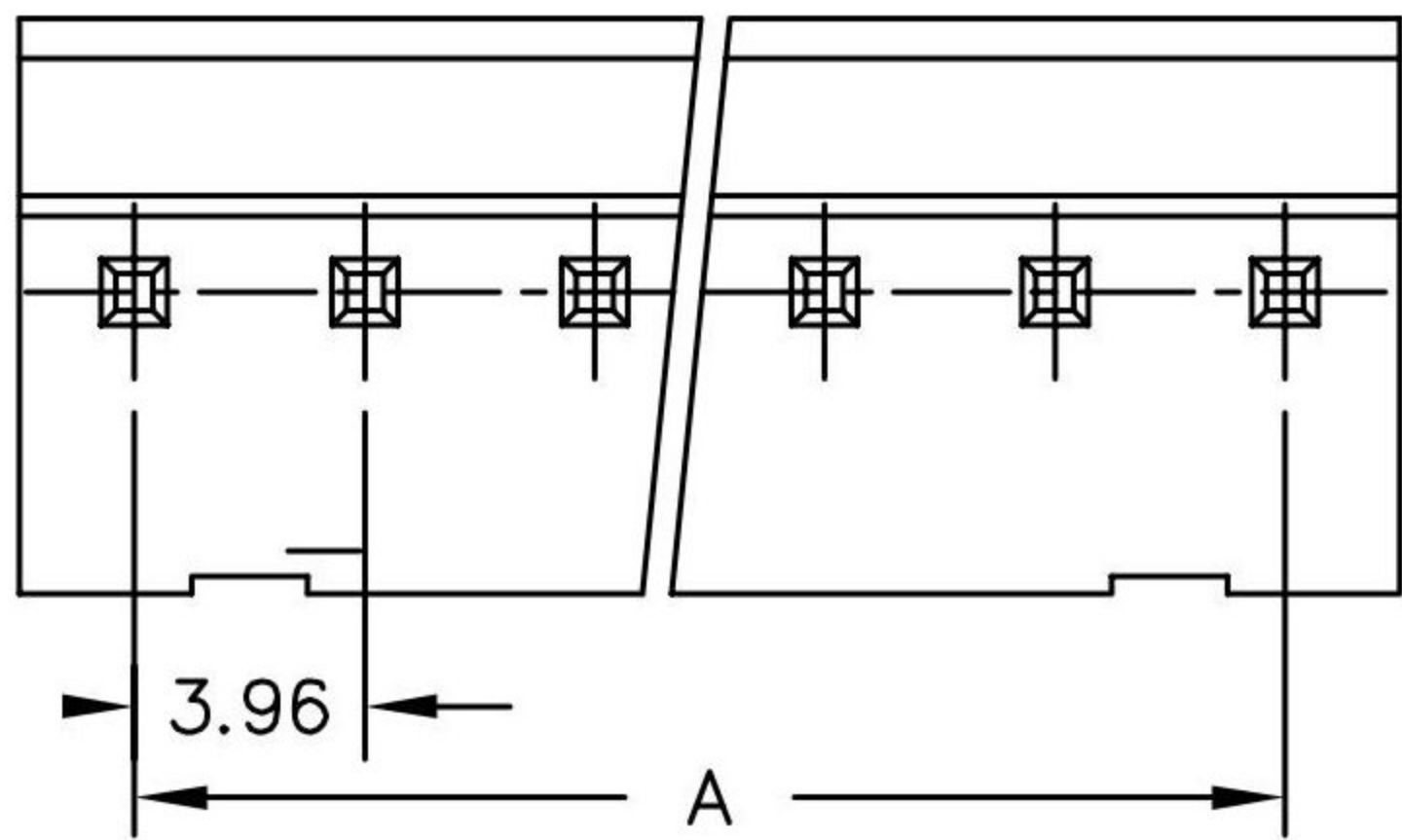


1 2 3 4 5 6 7 8

A



B

C

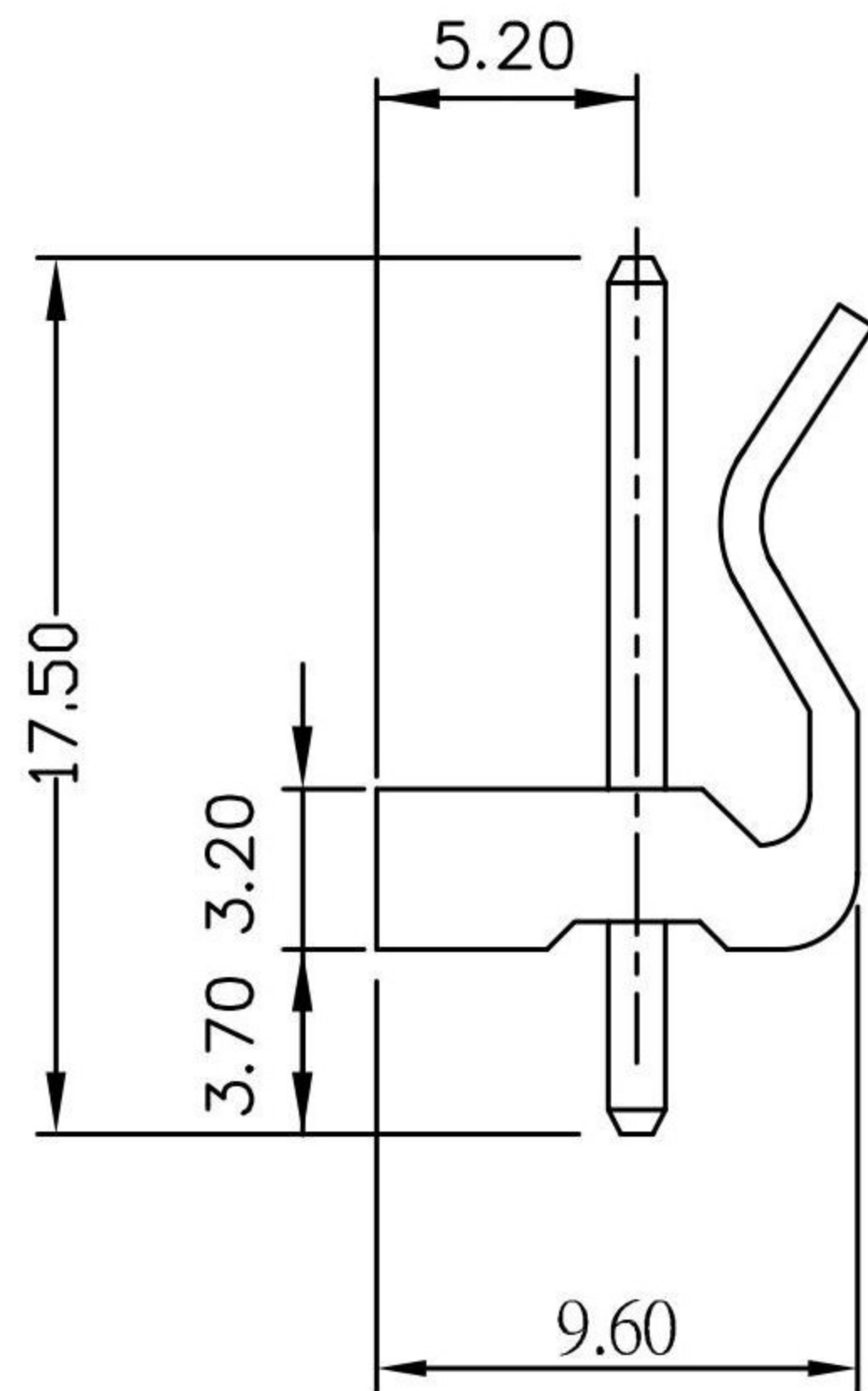
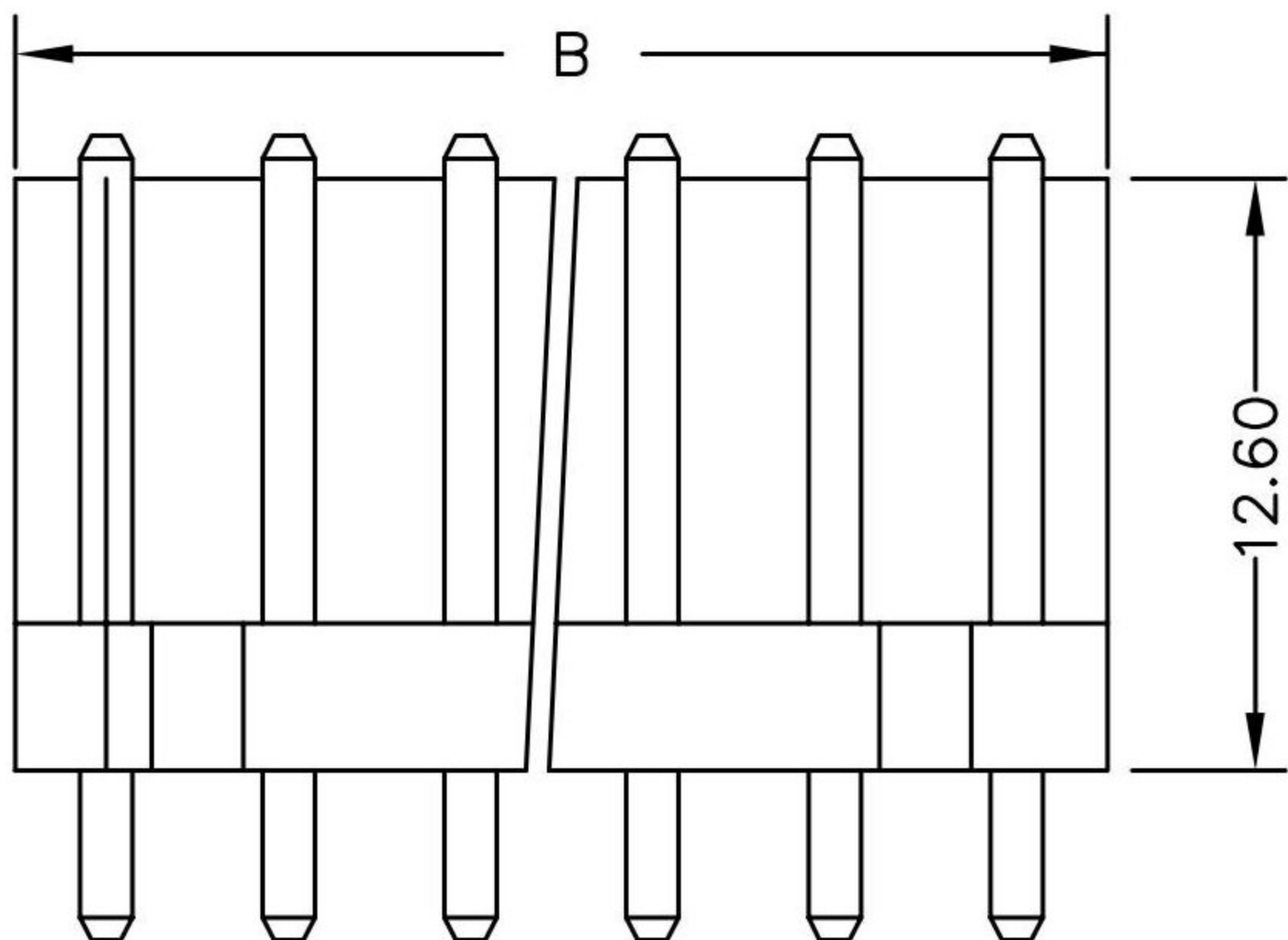
D

E

F

G

H



SPECIFICATIONS

Electrical

Current Rating: 5A AC, DC

Voltage Rating: 250V AC, DC

Operating Temp.: -25°C ~ +85°C

Insulation Resistance: 1000MΩ/ min.

Dielectric Withstanding Voltage: 1500V AC/ min.

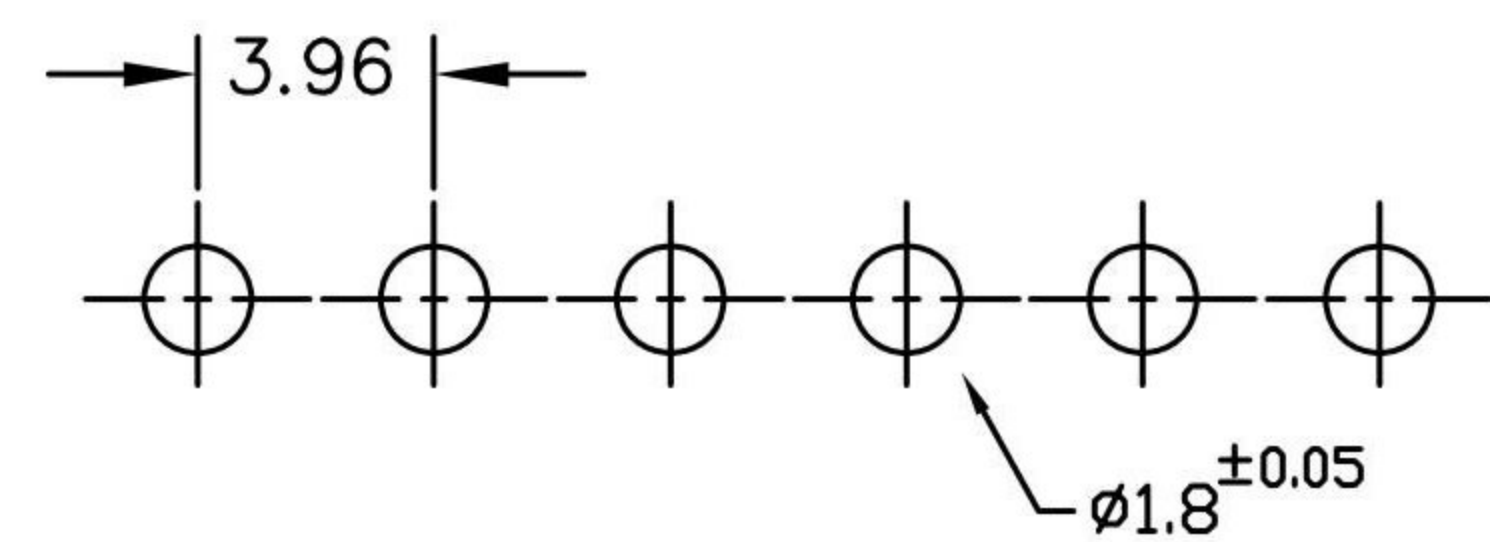
Contact Resistance: 10mΩ/ max.

Material

Insulator : Nylon66, UL94V-2

Terminal : Brass / Tin-Plated

Poles	Dimension mm (in.)	
	A	B
2	3.96	7.92
3	7.92	11.88
4	11.88	15.84
5	15.84	19.80
6	19.80	23.76
7	23.76	27.72
8	27.72	31.68
9	31.86	35.64
10	35.64	39.60
11	39.60	43.56
12	43.56	47.52
13	47.52	51.48
14	51.48	55.44
15	55.44	59.40
16	59.40	63.36
17	63.36	67.32
18	67.32	71.28
19	71.28	75.24
20	75.24	79.20



RECOMMENDED P.C.BOARD HOLE DIMM.

RoHS
Compliant

HSM 玄茂科技股份有限公司
HSUAN MAO TECHNOLOGY CO., LTD.

APPD. 核准 Betty
DWG. 製圖 Betty
DATE 制表日 2012/04/20

SCALE 比例 參考
UNIT 單位 MM
PAGE 張數 1 OF 1

TOLERANCE 容許公差
.0 ± 0.5
.00 ± 0.35
ANG. ±
SIZE. 紙張尺寸 A4
REV. 版次 B
PART NAME 品名
3.96mm WAFER STRAIGHT TYPE
1XXXP WITH LOCKING RIBS
TIN PLATED WHITE COLOR ROHS
PART NO. 料號
W2400-XXPSYTW0R

1 2 3 4 5 6 7 8