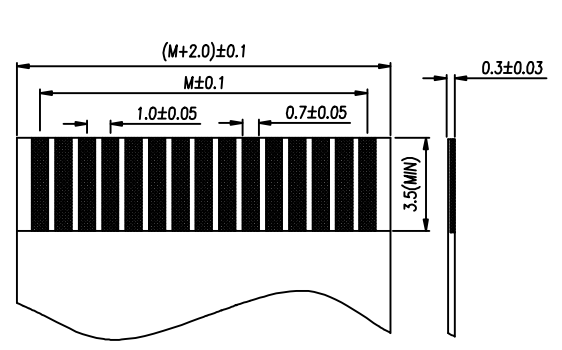
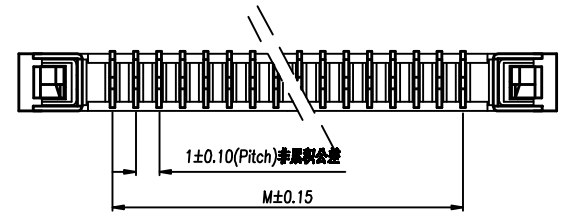
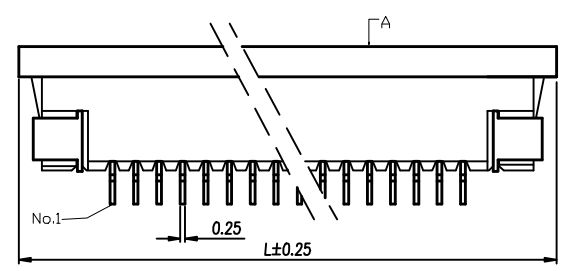
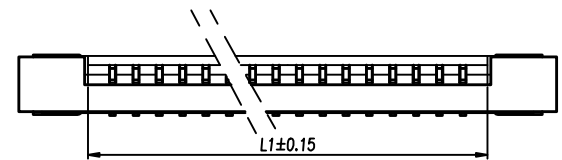
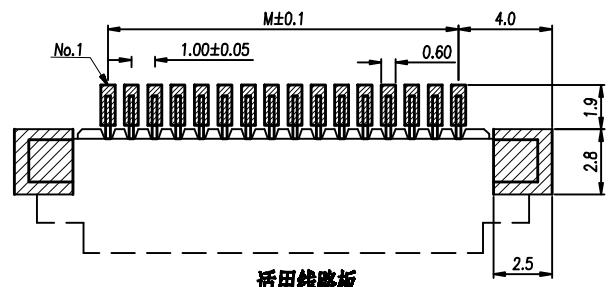
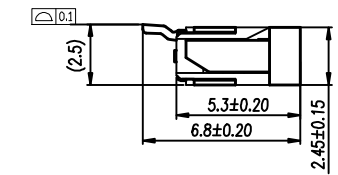
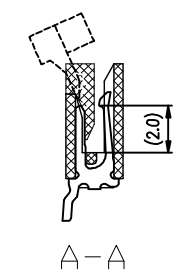


1 2 3 4 5 6 7 8 9

F
E
D
C
B
A



适用FPC寸法
APPLICABLE FPC



适用线路板
RECOMMENDED PCB LAYOUT

NOTE:
Material:
Housing: High Temperature Thermoplastic,
UL 94V-0 LCP or the equivalent material.
Actuator: High Temperature Thermoplastic,
UL 94V-0 LCP or the equivalent material.
Contact: Copper Alloy
Rating:
Operating Temperature: -25°C~+85°C
Operating Voltage: 125V AC/DC
Current Rating: 1.0 AMPS
Dielectric Withstanding voltage: 500V AC/Minute
Insulation Resistance: 500MQ Min
Contact Resistance: 0.03Ω Max
All materials must meet Greenconn
requirement for environment protection.

No. of Contacts	Dimension Information			No. of Contacts	Dimension Information		
	M	L1	L		M	L1	L
04	3	5.06	11	24	23	25.06	31
05	4	6.06	12	25	24	26.06	32
06	5	7.06	13	26	25	27.06	33
07	6	8.06	14	27	26	28.06	34
08	7	9.06	15	28	27	29.06	35
09	8	10.06	16	29	28	30.06	36
10	9	11.06	17	30	29	31.06	37
11	10	12.06	18	31	30	32.06	38
12	11	13.06	19	32	31	33.06	39
13	12	14.06	20	33	32	34.06	40
14	13	15.06	21	34	33	35.06	41
15	14	16.06	22	35	34	36.06	42
16	15	17.06	23	36	35	37.06	43
17	16	18.06	24	37	36	38.06	44
18	17	19.06	25	38	37	39.06	45
19	18	20.06	26	39	38	40.06	46
20	19	21.06	27	40	39	41.06	47
21	20	22.06	28				
22	21	23.06	29				
23	22	24.06	30				

Ordering Information
CFCD108 - XX XX A 005 C X A X

No. of Pins per Row 04~40
Standard Plating 02=Gold Flash
Selective Plating 01=Tin 05=Gold Flash /Tin
Color 1=Black 2=White ...
Standard Packing C=Tube D=Tape Reel
Selective Packing

 Website: www.greenconn.com E-mail: sales@greenconn.com	3RD.ANG PROJ.	GENERAL TOLERANCE		DESIGNED:	DATE:	DWG. NO. CFCD108-CA005CA	TITLE. 1.00 PITCH FPC SMT TOP CONTACT	
	 SCALE. 1:1	X: ±5.0'	X: ±0.30	CHECKED:	DATE:			PART NO. CFCD108-XXXXA005CXAX
	REV. 04 UNIT. mm	.X' ±3.0'	.X ±0.25	APPROVED:	DATE:			
SCALE. 1:1	.XX' ±2.0'	.XX ±0.15						
PAGE. 1/1	.XXX' ±1.0'	.XXX ±0.10						

06 1 2 3 4 5 6 7 8 9