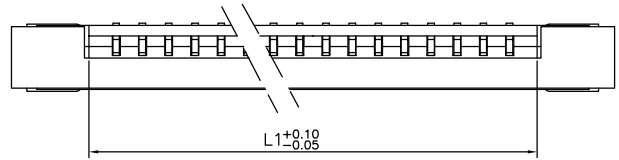
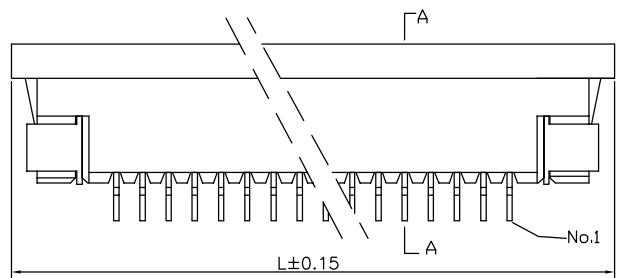


1 2 3 4 5 6 7 8 9

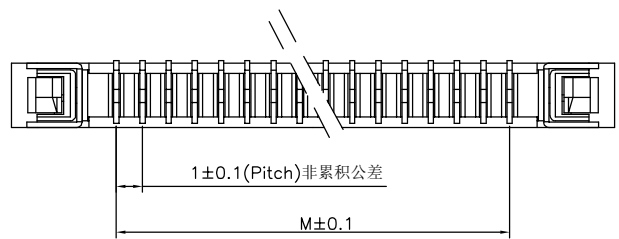
F



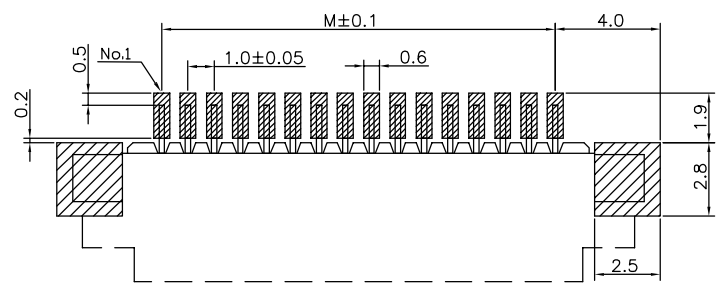
E



D

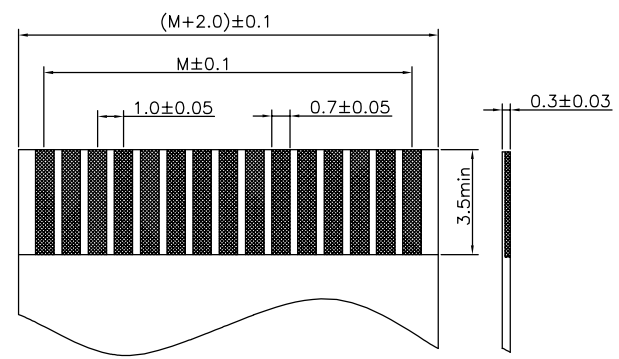
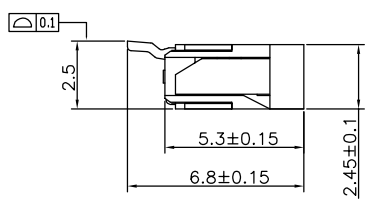
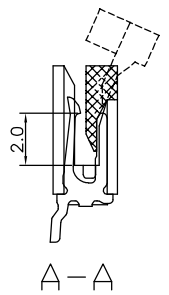


C



B

适用FPC寸法
RECOMMENDED PCB LAYOUT



适用FPC寸法
APPLICABLE FPC

NOTES:
 1. MATERIAL: SEE TABLE;
 2. PLATING :SEE PART NUMBER
 3. RATING
 3-1. OPERATING TEMPERATURE:-25°C~±85°C
 3-2. OPERATING VOLTAGE: 125V AC/DC
 3-3. CURRENT RATING: 1.0 AMPS
 3-4. DIELECTRIC WITHSTANDING VOLTAGE:
 500V AC/Minute;
 3-5. INSULATION RESISTANCE:500MΩ Min;
 3-6. CONTACT RESISTANCE:0.03Ω Max;
 All materials must meet GREENCONN
 hazardous substances control standards.

No. of PIN/ROW	Dimension Information		
	M	L1	L
04	3	5.06	11
05	4	6.06	12
06	5	7.06	13
07	6	8.06	14
08	7	9.06	15
09	8	10.06	16
10	9	11.06	17
11	10	12.06	18
12	11	13.06	19
13	12	14.06	20
14	13	15.06	21
15	14	16.06	22
16	15	17.06	23
17	16	18.06	24
18	17	19.06	25
19	18	20.06	26
20	19	21.06	27
21	20	22.06	28
22	21	23.06	29
23	22	24.06	30
24	23	25.06	31
25	24	26.06	32
26	25	27.06	33
27	26	28.06	34
28	27	29.06	35
29	28	30.06	36
30	29	31.06	37
31	30	32.06	38
32	31	33.06	39
33	32	34.06	40
34	33	35.06	41
35	34	36.06	42
36	35	37.06	43
37	36	38.06	44
38	37	39.06	45
39	38	40.06	46
40	39	41.06	47

CFCD108 - XX

No. of Pins per Row
04~40

XX A 006 C X A X

Standard Plating
01=Tin
Selective Plating
22=Matte Tin

Color
2=White
1=Black

Standard Packing
D=Tape&Reel
Selective Packing
C=Tube

A



3RD.ANG PROJ.

PAGE. 1/1

GENERAL TOLERANCE	
X.*±/	X.±0.30
.X*±/	.X±0.25
.XX*±/	.XX±0.12
.XXX*±/	.XXX±0.10

DESIGNED: / DATE: /
 CHECKED: / DATE: /
 APPROVED: / DATE: /

DWG. NO. CFCD108-CA6CA
 PART NO. CFCD108-XXXXA006CXAX

TITLE. 1.0 FPC CONN.
 ZIF SMT FRONTFLIP
 H=2.5 LOWER CONTACT

1 2 3 4 5 6 7 8 9