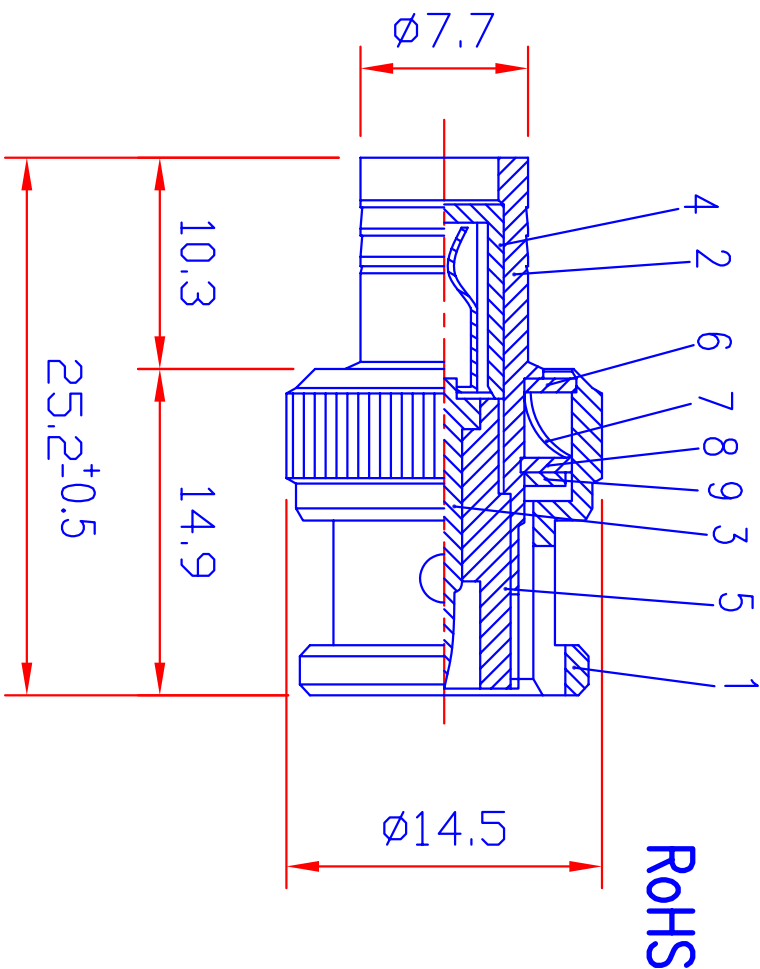
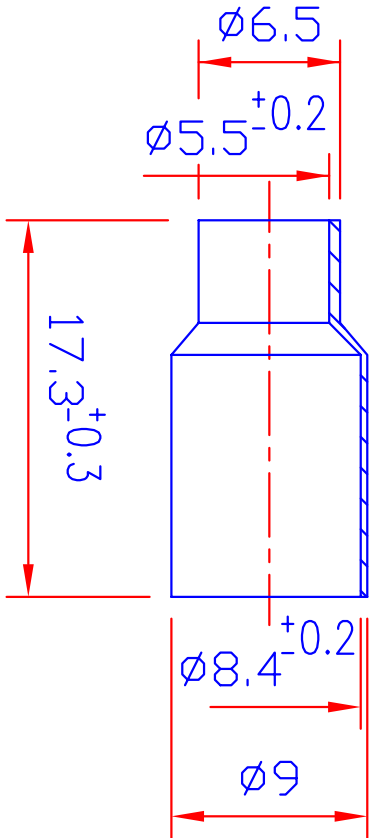


SPECIFICATION

BNC MALE CONNECTOR
 CRIMP TYPE , RG58, NICKEL, PLATED , PIN GOLD
 BNC 公 , CRIMP TYPE , RG58, 鍍外殼 , 鍍鎳 , PIN: 鍍金



UNLESS OTHERWISE SPECIFIED
 GENERAL TOLERANCES
 0.5~6 = ±0.2
 >6~30 = ±0.4
 >30~120 = ±0.6

10	RING	1	BRASS	NICKEL	CE/2005/B1631	
9	GASKET	1	RUBBER	RED	CE/2005/30284	
8	WASHER	1	STEEL	NICKEL	CE/2004/C0949	
7	SPRING	1	SK-5	NICKEL	CE/2004/C2674	
6	WASHER	1	STEEL	NICKEL	CE/2004/C0949	
5	INSULATOR	1	DELIRIN	WHITE	KE/2005/80079	
4	INSULATOR	1	P.P.	WHITE	KE/2005/80079	
3	PIN	1	BRASS	GOLD	CE/2005/B1631	
2	BODY	1	BRASS	NICKEL	CE/2005/A3208	
1	SHELL	1	ZINC	NICKEL	KA/2005/B0516	
NO.	DESCRIPTION	QTY	MATERIAL	SPECIFICATION	SGS NO.	REMARK
DRAW BY	周佩君	021908	SCALE	3:1	PROJ	TL4218-58 -BZCDNG
DEGN BY			UNIT	MM		BNC M QUICK CRIMP
APPD BY						

同利企業有限公司

TELE LONG ENTERPRISE CO.,LTD

DWG NO.

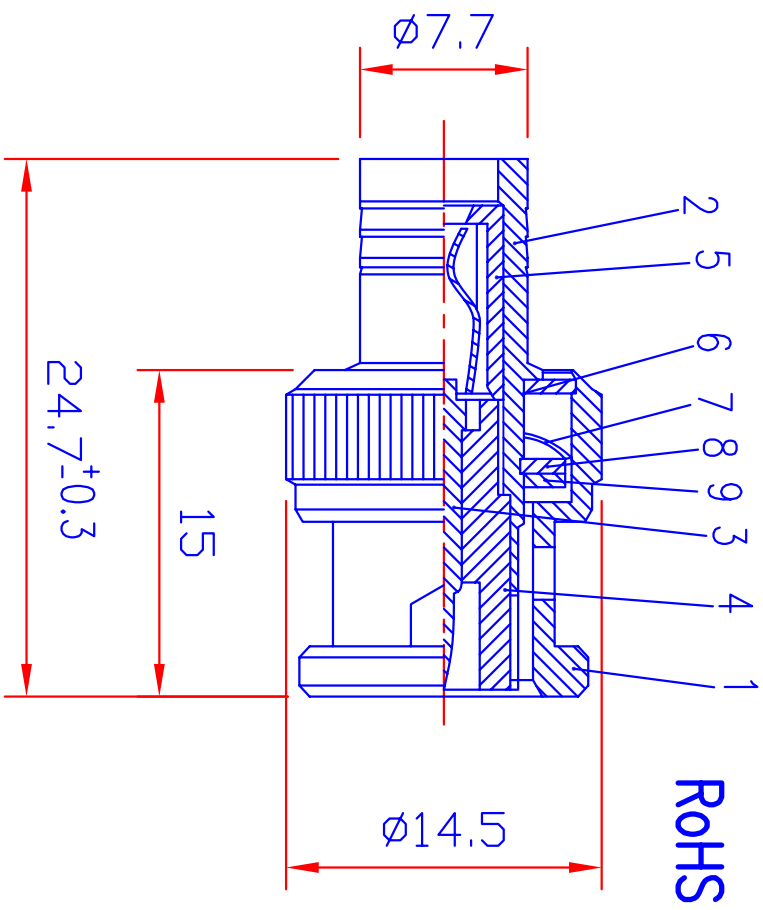
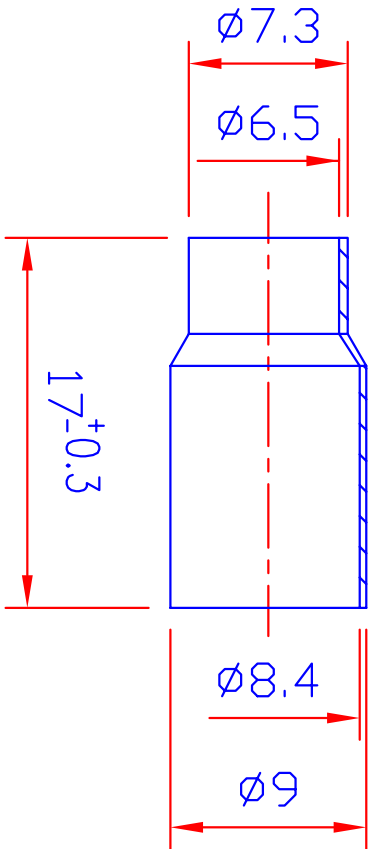
TL4218-58-
BZCDNG-TNS61-C

DATE DRAWG BY REVISED

(*)

SPECIFICATION

BNC MALE CONNECTOR
 CRIMP TYPE , RG59, NICKEL, PLATED , PIN GOLD
 WITH ROHS COMPLIANT
 BNC 公 , CRIMP TYPE , RG59, 鍍外殼 , 鍍鍍 , PIN: 鍍金



RoHS

UNLESS OTHERWISE SPECIFIED
 GENERAL TOLERANCES
 0.5~6 = ±0.2
 >6~30 = ±0.4
 >30~120 = ±0.6

10	RING	1	BRASS	NICKEL	CE/2005/B1631	
9	GASKET	1	RUBBER	RED	CE/2005/30284	
8	WASHER	1	STEEL	NICKEL	CE/2004/C0949	
7	SPRING	1	SK-5	NICKEL	CE/2004/C2674	
6	WASHER	1	STEEL	NICKEL	CE/2004/C0949	
5	INSULATOR	1	DELIRIN	WHITE	KE/2005/80079	
4	INSULATOR	1	DELIRIN	WHITE	KE/2005/80079	
3	PIN	1	BRASS	GOLD	CE/2005/B1631	
2	BODY	1	BRASS	NICKEL	CE/2005/A3208	
1	SHELL	1	ZINC	NICKEL	KA/2005/B0516	
NO.	DESCRIPTION	QTY	MATERIAL	SPECIFICATION	SGS NO.	REMARK
DRAW BY	周佩君	021908	SCALE	3:1		TL4218-59 -BZCDNG
DEGN BY						BNC M QUICK CRIMP
APPD BY			UNIT	MM		

同利企業有限公司

TELE LONG ENTERPRISE CO.,LTD

DWG NO.

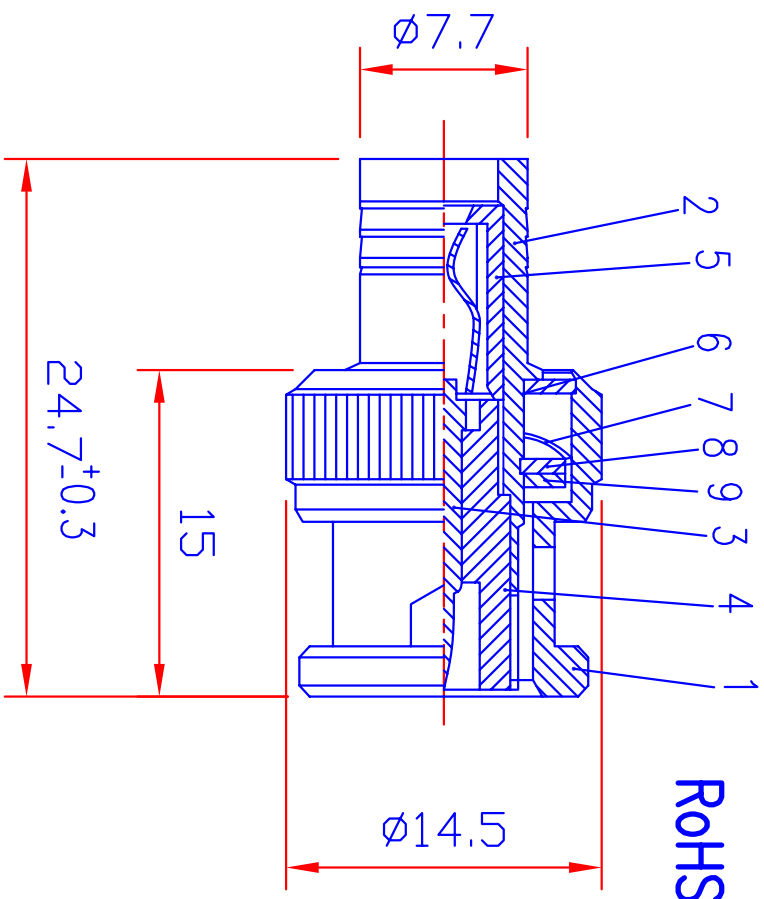
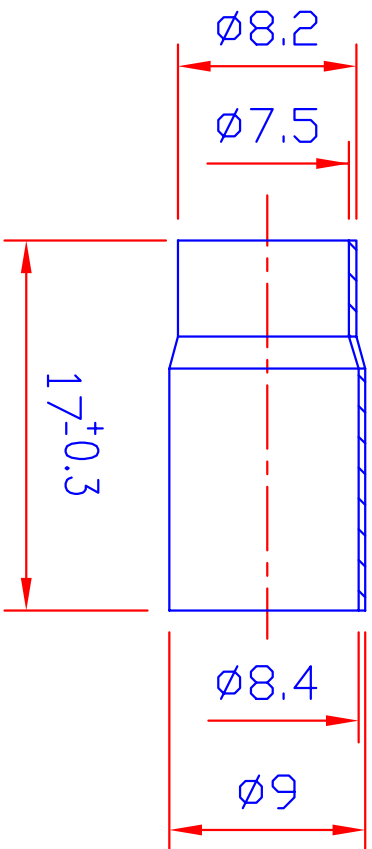
TL4218-59-
BZCDNG-TNS61-C

DATE	DRAWG BY	REVISED	△
------	----------	---------	---

(*)

SPECIFICATION

BNC MALE CONNECTOR
 CRIMP TYPE , RG6U, NICKEL, PLATED , PIN GOLD
 BNC 公 , CRIMP TYPE , RG6U, 鉍外殼 , 鍍鎳 , PIN: 鍍金



RoHS

UNLESS OTHERWISE SPECIFIED
 GENERAL TOLERANCES
 0.5~6 = ±0.2
 >6~30 = ±0.4
 >30~120 = ±0.6

10	RING	1	BRASS	NICKEL	CE/2005/B1631	
9	GASKET	1	RUBBER	RED	CE/2005/30284	
8	WASHER	1	STEEL	NICKEL	CE/2004/C0949	
7	SPRING	1	SK-5	NICKEL	CE/2004/C2674	
6	WASHER	1	STEEL	NICKEL	CE/2004/C0949	
5	INSULATOR	1	DELIRIN	WHITE	KE/2005/80079	
4	INSULATOR	1	DELIRIN	WHITE	KE/2005/80079	
3	PIN	1	BRASS	GOLD	CE/2005/B1631	
2	BODY	1	BRASS	NICKEL	CE/2005/A3208	
1	SHELL	1	ZINC	NICKEL	KA/2005/B0516	
NO.	DESCRIPTION	QTY	MATERIAL	SPECIFICATION	SGS NO.	REMARK
DRAW BY	周佩君	021908	SCALE	3:1		TL4218-6U -BZCDNG
DEGN BY						
APPD BY			UNIT	MM		BNC M QUICK CRIMP

同利企業有限公司

TELE LONG ENTERPRISE CO.,LTD

DWG NO.

TL4218-6U-
BZCDNG-TNS61-C

DATE	DRAWG BY	REVISED	△
------	----------	---------	---

(*)