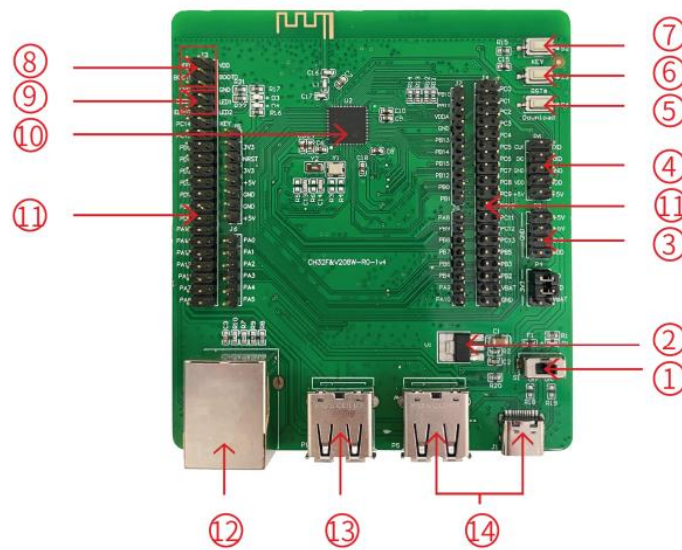


CH32V208WBU6-EVT-R0

CH32V208 Evaluation Board



Descriptions

1.Power switch	5.Download button	9.LED row pin	13.USB interface
2.Voltage regulator chip	6.Reset button	10. Main control MCU	14.USB interface
3.Power row pin	7.KEY	11.MCU I/O port	
4.DEBUG interface	8.Boot mode configuration	12.Network port	

This board is relatively large, with a size of 8.6cm * 9.5cm. It integrates a Bluetooth antenna, RJ45 network port, and two USB-A female ports.

There is a power switch, the switch is used to control the power supply of the TypeC port, if the power is supplied through the SWD port, this switch is invalid

Burning is through the 2x5 pin header numbered 4 in the upper right corner of the evaluation board, and the pin header layout is exactly the same as the WCH-Link pin header layout

Three LEDs, one power indicator, two unconnected but have corresponding pin headers (LED1 and LED2), you can use a jumper to connect to other pin ports to observe the output.

CH32V208WBU6

CH32V208WBU6 is a relatively new chip of Qinheng 32-bit RISC-V, based on the highland barley RISC-V4C core, with a maximum frequency of 144MHz, 64KB SRAM, 128KB Flash, and a power supply voltage of 2.5/3.3V.

Features of this model: In addition to the unique hardware stack area and fast interrupt entry, the chip integrates **2Mbps low-power Bluetooth BLE 5.3**, **10M Ethernet MAC+PHY**, **USB2.0 full-speed device+host/device interface**, **CAN controller**.

10M Ethernet is equipped with PHY, which can be directly connected to the network port, saving the need for welding LAN8720.

The main features of CH32V208WBU6:

- Qingke V4C processor, up to 144MHz system clock frequency.
- Single-cycle multiplication and hardware division.
- 64KB SRAM, 128KB Flash.
- Supply voltage: 2.5V/3.3V. GPIO unit is supplied independently.
- Low-power modes: sleep/stop/standby.
- Bluetooth Low Energy 5.3.
- 10M Ethernet controller (MAC+PHY).
- Power-on/power-down reset (POR/PDR), programmable voltage detector (PVD).
- 2 amplifiers.
- 16-channel 12-bit ADC, 16-channel TouchKey.
- 5 timers.
- USB2.0 full-speed host/device + device interface.
- 4 USARTs.
- One CAN interface (2.0B active).
- 2 IIC interfaces, 2 SPI interfaces.
- 53 I/O ports, can be mapped to 16 external interrupts.
- CRC calculation unit, 96-bit unique ID.
- Serial 2-wire debug interface.
- Package QFN68.