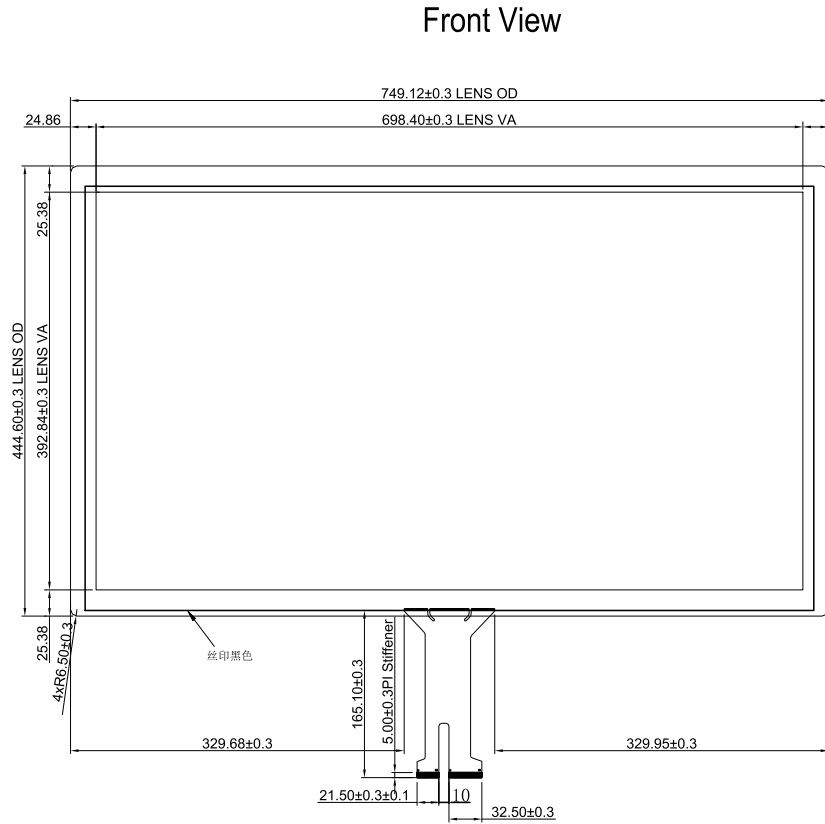
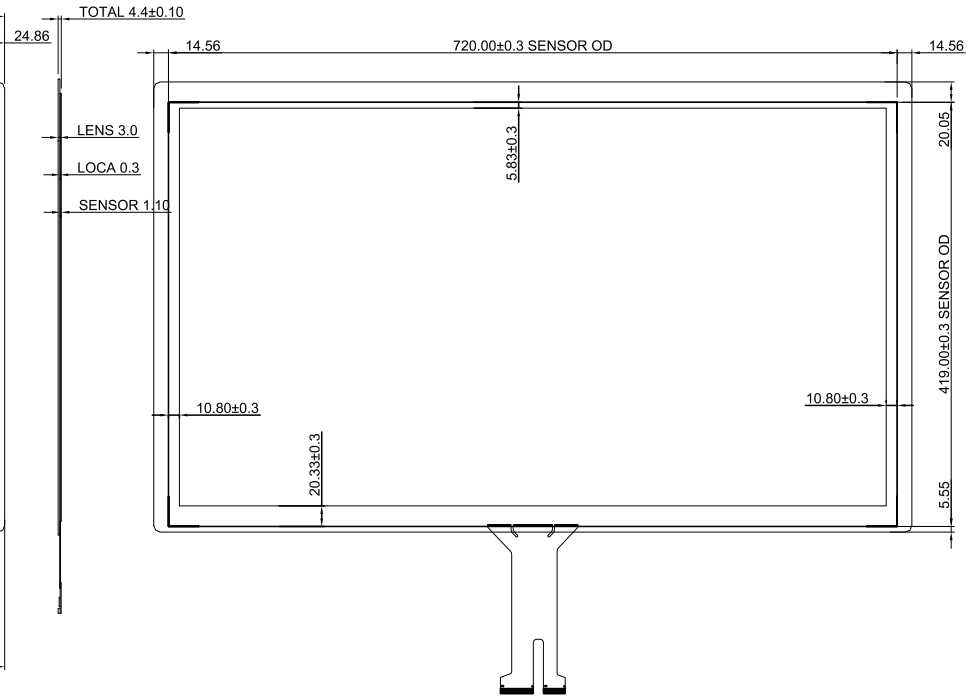


Ver.	modify NO.	Details	Area	P.I.C	Date



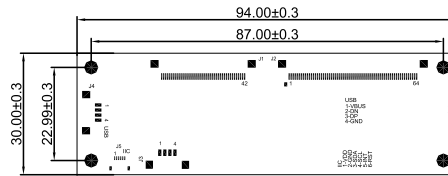
Side View



Back View

Technical parameters:

1. Cover Glass+LOCA+ITO Glass
2. IC: WD8752(TX34*RX60)
3. Operating Humidity: 45~85 %RH
4. Light transmission: 85%
5. Surface Hardness: 6H
6. Operating temperature: -20°C~+70°C
7. Storage temperature: -30°C~+80°C
8. General tol±0.2mm



Scale 4: 1

Part No.		BTP-GG-TPB-32-WD		
Product Name: 32inch Touch Panel		Drawing No.	GG320B42210728	
		Project Code.	GG320B42	
Business Unit: SNT-BTP		Period Mark	View Angle	Ratio
		A		1:1
Workmanship: Tina.Xin		BOM Code	1.12.320.42.0000	
Standardization: Link.Chen		Page 1		Total 1 Page
Released by: Rocky.Liu		Product Series	BTP-GG	
思诺泰科创电子(苏州)有限公司 SINOTRONICS INC.				