

F

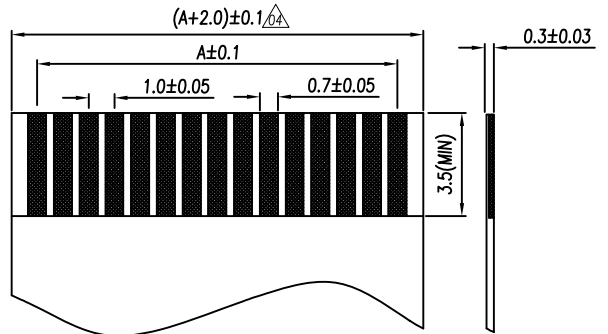
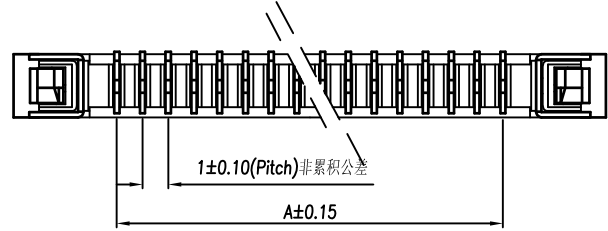
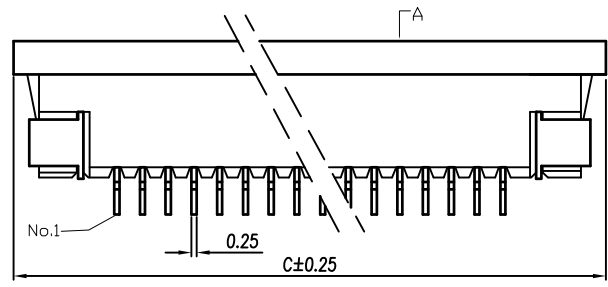
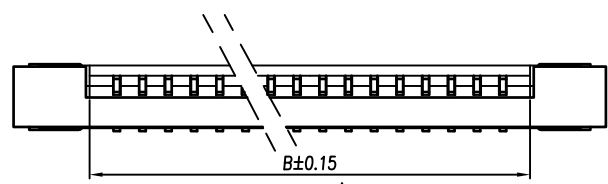
E

D

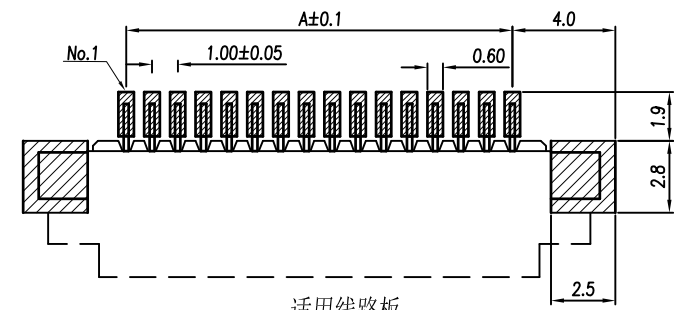
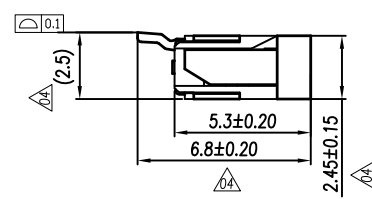
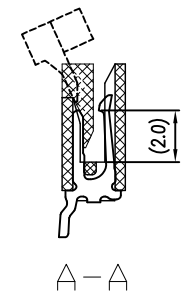
C

B

A



适用FPC寸法
APPLICABLE FPC



适用线路板
RECOMMENDED PCB LAYOUT

| REV. | LOCAS. | DESCRIPTION | DATE | DRAWN |
|------|--------|-------------|------------|-------|
| 01 | | | 2006.06.23 | 皮洪斌 |
| 02 | △2 | 變更料號 | 2009.02.23 | 林澤云 |
| 03 | △3 | 變更圖號, 修改註解 | 2011.07.25 | 李劍峰 |
| 04 | △4 | 增加P位, 更新圖紙 | 2022.09.16 | 羅嘉樂 |

NOTE:

Material:

- Housing: High Temperature Thermoplastic, △ UL 94V-0 LCP or the equivalent material.
- Actuator: High Temperature Thermoplastic, △ UL 94V-0 LCP or the equivalent material.
- Contact: Copper Alloy

Rating:

- Operating Temperature: -25°C~+85°C
- Operating Voltage: 125V AC/DC
- Current Rating: 1.0 AMPS
- Dielectric Withstanding voltage: 500V AC/Minute
- Insulation Resistance: 500MΩ Min
- Contact Resistance: 0.03Ω Max

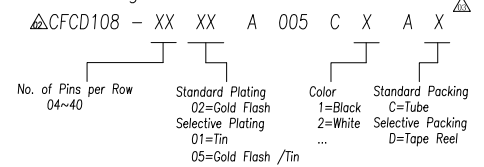
△ All materials must meet Greenconn requirement for environment protection.

△4

TABLE:

| No. of Contacts | Dimension Information | | | No. of Contacts | Dimension Information | | |
|-----------------|-----------------------|-------|----|-----------------|-----------------------|-------|----|
| | A | B | C | | A | B | C |
| 04 | 3 | 5.06 | 11 | 24 | 23 | 25.06 | 31 |
| 05 | 4 | 6.06 | 12 | 25 | 24 | 26.06 | 32 |
| 06 | 5 | 7.06 | 13 | 26 | 25 | 27.06 | 33 |
| 07 | 6 | 8.06 | 14 | 27 | 26 | 28.06 | 34 |
| 08 | 7 | 9.06 | 15 | 28 | 27 | 29.06 | 35 |
| 09 | 8 | 10.06 | 16 | 29 | 28 | 30.06 | 36 |
| 10 | 9 | 11.06 | 17 | 30 | 29 | 31.06 | 37 |
| 11 | 10 | 12.06 | 18 | 31 | 30 | 32.06 | 38 |
| 12 | 11 | 13.06 | 19 | 32 | 31 | 33.06 | 39 |
| 13 | 12 | 14.06 | 20 | 33 | 32 | 34.06 | 40 |
| 14 | 13 | 15.06 | 21 | 34 | 33 | 35.06 | 41 |
| 15 | 14 | 16.06 | 22 | 35 | 34 | 36.06 | 42 |
| 16 | 15 | 17.06 | 23 | 36 | 35 | 37.06 | 43 |
| 17 | 16 | 18.06 | 24 | 37 | 36 | 38.06 | 44 |
| 18 | 17 | 19.06 | 25 | 38 | 37 | 39.06 | 45 |
| 19 | 18 | 20.06 | 26 | 39 | 38 | 40.06 | 46 |
| 20 | 19 | 21.06 | 27 | 40 | 39 | 41.06 | 47 |
| 21 | 20 | 22.06 | 28 | | | | |
| 22 | 21 | 23.06 | 29 | | | | |
| 23 | 22 | 24.06 | 30 | | | | |

Ordering Information



3RD.ANG PROJ.
PAGE. 1/1

| GENERAL TOLERANCE | |
|-------------------|-----------|
| X'±5.0' | X±0.30 |
| .X'±3.0' | .X±0.25 |
| .XX'±2.0' | .XX±0.15 |
| .XXX'±1.0' | .XXX±0.10 |

DESIGNED: 羅嘉樂
CHECKED:
APPROVED:

DATE: 2022.09.16
DATE:
DATE:

DWG. NO. CFCD108-CA005CA
PART NO. CFCD108-XXXXA005CXAX

TITLE: 1.00 PITCH FPC SMT TOP CONTACT