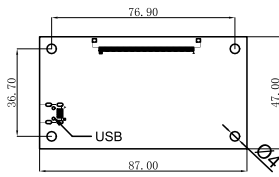
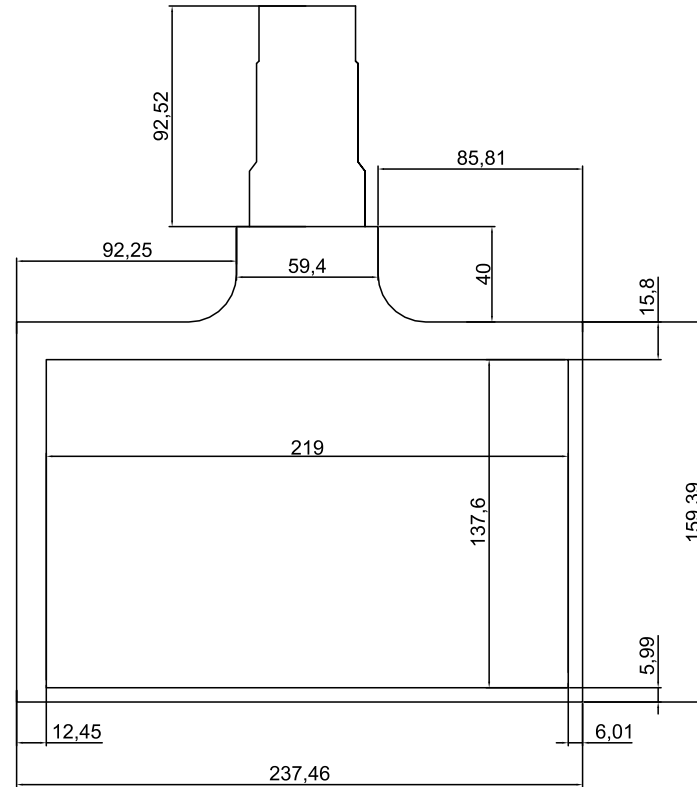


Ver.	Modify No.	Details	Area	P.I.C	Date

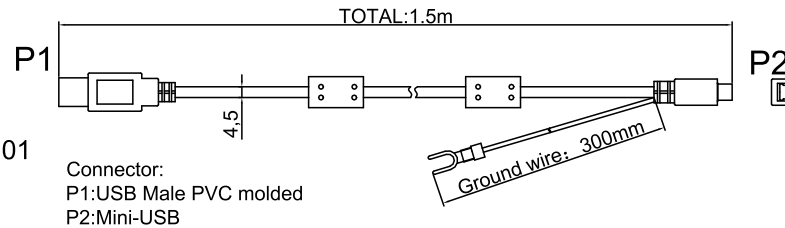


STM Controller

Golden Finger FRONT

Technical Datasheet:

1. Structure: Film+MCW+Film
2. Controller: BTP-MCW-CTR-STM-10.1B-SN01
3. Channels: Tx/Rx: 24\*48
4. Touch Points: 12 Points
5. All material used conform to RoHS standards



Connector:  
P1:USB Male PVC molded  
P2:Mini-USB

Part No.	BTP-MCW-TFB-10.1-STM-SN01		
Product Name: 10.1 inch Touch Foil	Drawing No.	M101B240722SN01	
	Project Code.	M101BSN01	
Business Unit: SNT-BTP	Period Mark	View Angle	Ratio
	A		1:2
BOM Code	1.02.101.02.0101	Page 1	Total 1 Page
Product Series	BTP-MCW	<b>SINOTECHNICS</b> Interactivity Changes the World	