

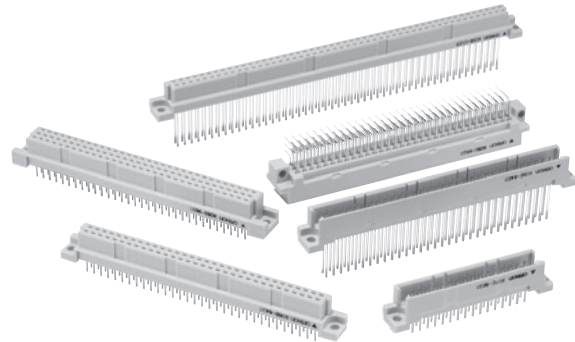
### A Wide Variety of DIN Connectors That Conform to UL/CSA Standards.

- Fully preserve the characteristics of normal DIN connectors while increasing the number of terminals available.
- A wide product range to fit almost any application.
- Meeting world market needs with products ranging from one-piece connectors (card edge) to two-piece connectors.
- Use the twin-contact system for high reliability and low cost.
- Lower insertion force as a result of FEM analysis techniques.
- Mates with OMRON's XC6-series connectors.
- Conform to UL standards (file no. E103202) and CSA standards (file no. LR 62678).

#### RoHS Compliant

### ■ Ratings and Characteristics

|                               |  |
|-------------------------------|--|
| Rated current                 | 2 A  |
| Rated voltage                 | 300 VAC  |
| Contact resistance            | 20 mΩ max. (at 20 mV, 100 mA max.)               |
| Insulation resistance         | 10 <sup>6</sup> MΩ min. (at 100 VDC)             |
| Dielectric strength           | 1,000 VAC for 1 min (leakage current: 1 mA max.) |
| Total insertion force         | 0.59 N max. per contact                          |
| Removal force                 | 0.15 N min. (with test gauge, t = 0.56 mm)       |
| Insertion durability          | 200 times  |
| Ambient operating temperature | Operating: -55 to 125°C (with no icing)          |



### ■ Materials and Finish

| Item     |            | Plugs<br>(See note 2.)                               | Sockets  |
|----------|------------|--|--|
| Housings |            | Fiber-glass reinforced PBT resin (UL94V-0)/gray      |  |
| Contacts | Mating end | Brass/nickel base, 0.4-μm gold plating (See note 1.) | Phosphor bronze/nickel base, 0.4-μm gold plating (See note 1.) |
|          | Terminal   | Brass/nickel base, 2.0-μm tin plating                | Phosphor bronze/nickel base, 2.0-μm tin plating                |

**Note:** 1. For non-standard plating specifications, contact your OMRON representative.  
2. Wrap terminal contacts are made from phosphor bronze.

### ■ Applicable Wrap Post Wire Sizes

AWG30, AWG28, AWG26, or AWG24  
(Solid wire: 0.25 to 0.51 mm dia.)

### ■ Wrap Post Length

3 wires

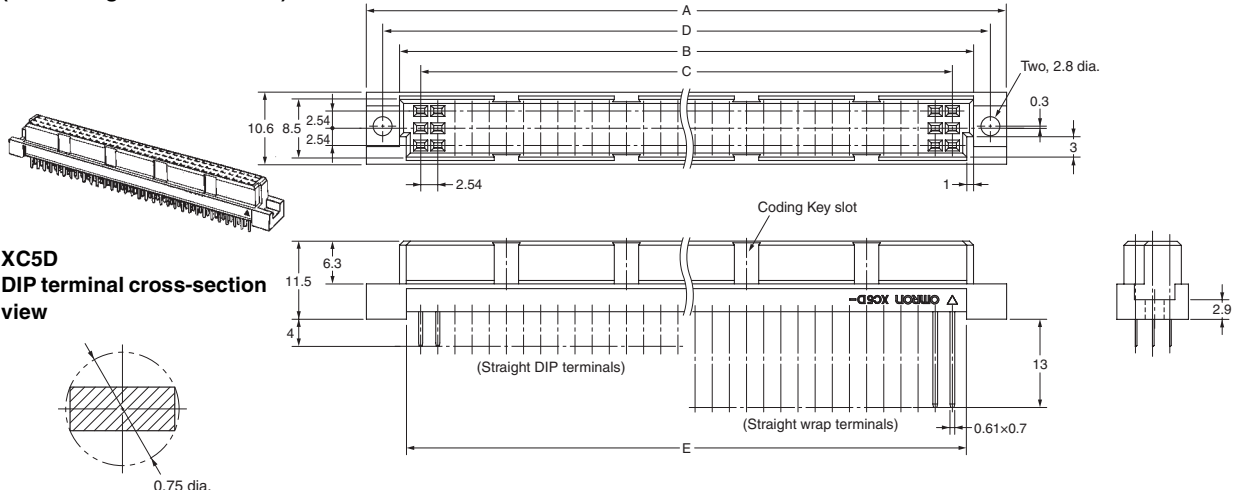
# XC5D Triple-row Sockets, DIN C-type (Standard)

## ■ Dimensions

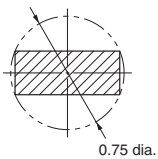
(unit: mm)

XC5D-□□21

(With straight DIP terminals)

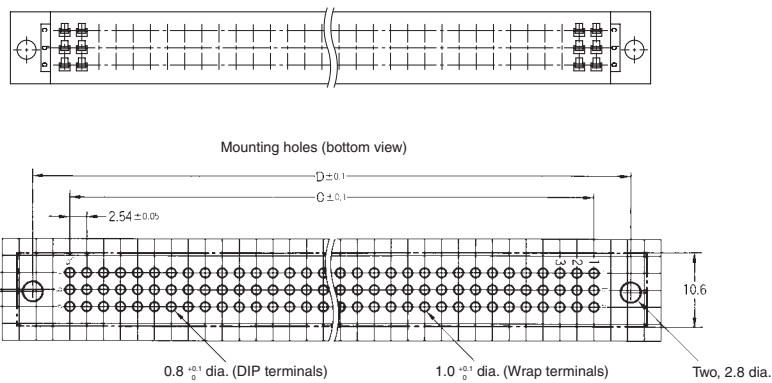
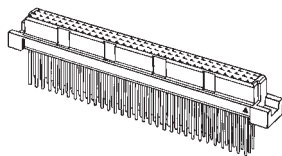


XC5D  
DIP terminal cross-section  
view

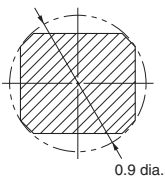


XC5D-□□23

(With straight wrap terminals)



XC5D  
Wrap terminal cross-section  
view



### Dimensions

| No. of contacts | Dimensions (mm) |      |       |       |      | Coding Key slot positions (contact No.) |
|-----------------|-----------------|------|-------|-------|------|---|
|                 | A               | B    | C     | D     | E    |   |
| 32*             | 54.2            | 44.4 | 38.10 | 49.36 | 42.3 | 5, 12                                   |
| 48              | 54.2            | 44.4 | 38.10 | 49.36 | 42.3 | 5, 12                                   |
| 64*             | 94.8            | 85.0 | 78.74 | 90.00 | 82.9 | 6, 13, 20, 27                           |
| 96              | 94.8            | 85.0 | 78.74 | 90.00 | 82.9 | 6, 13, 20, 27                           |

\*Has no center row (row b).

## ■ Ordering Information

| No. of contacts | Terminal type          |                         |
|-----------------|------------------------|-------------------------|
|                 | Straight DIP terminals | Straight wrap terminals |
| 32*             | XC5D-3221              | ---                     |
| 48              | XC5D-4821              | XC5D-4823               |
| 64*             | XC5D-6421              | XC5D-6423               |
| 96              | XC5D-9621              | XC5D-9623               |

\*Has no center row (row b).