

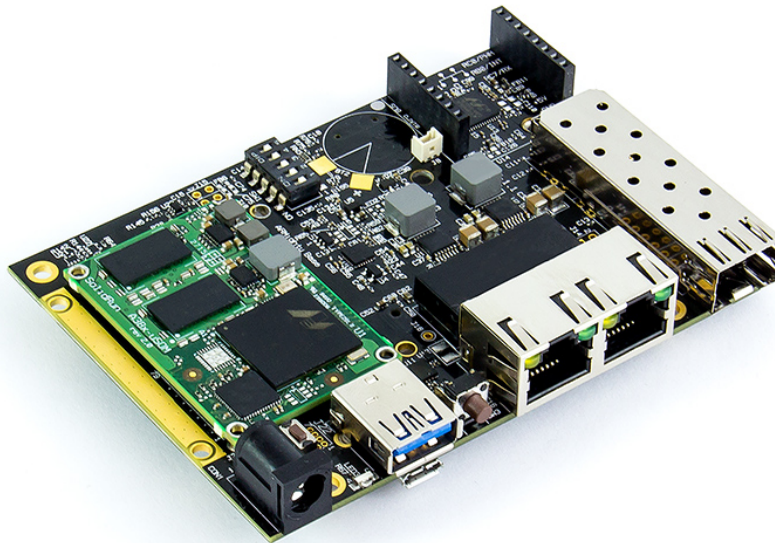


Marvell ARMADA

ClearFog Base

Carrier Board for ARMADA SoM (System-On-Module)

Rev 1.2



Simple. Robust. Computing Solutions

SolidRun Ltd.

7 Hamada st.,

Yokne'am Illit, 2495900, Israel.

www.solid-run.com

Overview

Introducing the ClearFog family, a flexible IoT gateway platform which harnesses the full potential and robust processing power of the ARMADA SoC – providing a modular powerful board with endless possibilities. With the ARMADA processor at its core, the ClearFog offers both optimal modulation and fast processing speeds, cutting development costs, TTM and simplifying production process.

ClearFog Base Highlighted Features

- ✿ Based on Marvell's ARMADA A388 SoC
- ✿ Up to 2GB memory size
- ✿ Optimized for networking, routing and storage applications
- ✿ Feature rich
- ✿ Broad SW support

System Specifications

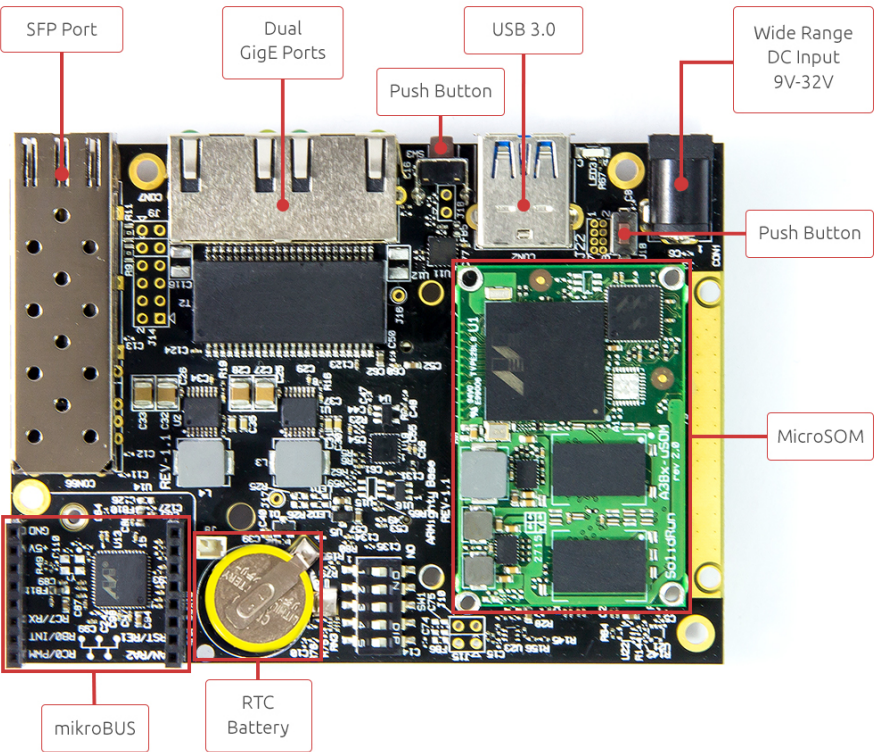
ClearFog Base	
SoM Model	ARMADA based A388
Memory and Storage	1GB (up to 2GB) M.2** uSD / 8GB eMMC* (Optional)
Connectivity	1× mPCIe 1×USB 3.0 port 2×Port dedicated Ethernet 1×SFP
I/O and Misc	mikroBUS Indication LEDs User Push Buttons PoE expansion header RTC Battery header FTDI (Console Only) / Debug Header
Power	Wide range 9V- 32V
Software	Linux Kernel 3.x and 4.x, OpenWrt, Yocto
Dimensions (WxL)	103mm×75mm
Enclosure	Optional Metal Enclosure

(*) Assembly option on the SoM.

(**)M.2 includes USB 3.0, SATA, GNSS, 3G modules support

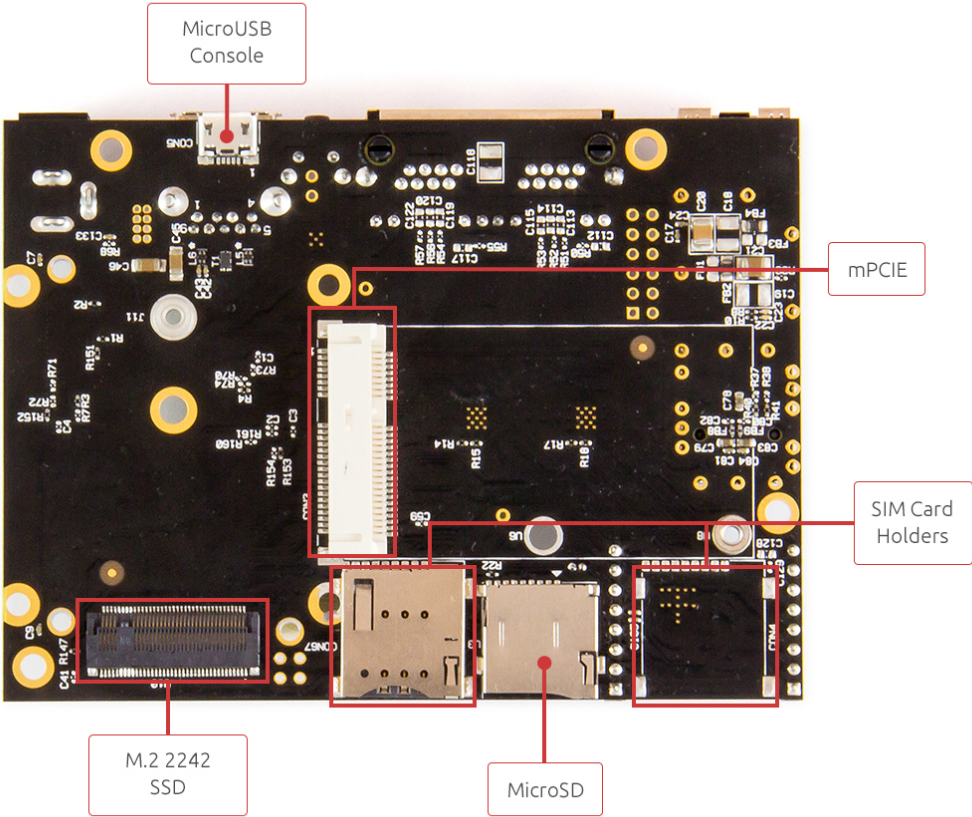
Interfaces

Top View



Interfaces

Bottom View



Available SKUs for ClearFog Base Carrier

SKU	Description
SRCFCBE000CV12	ClearFog Base Com. Temp R1.2
SRCFCBE000IV12	ClearFog Base Ind. Temp R1.2

SKUs for kits*

SKU	Description
SRM6828S00D01GE000B00CH	A388 Dual ClearFog Base No SSD 1GB DDR No eMMC Com. Temp R00 Inc. Heatsink
SRM6828S00D01GE008B00CH	A388 Dual ClearFog Base No SSD 1GB DDR 8GB eMMC Com. Temp R00 Inc. Heatsink
SRM6828S00D01GE000B00IH	A388 Dual ClearFog Base No SSD 1GB DDR No eMMC Ind. Temp R00 Inc. Heatsink
SRM6828S00D01GE008B00IH	A388 Dual ClearFog Base No SSD 1GB DDR 8GB eMMC Ind. Temp R00 Inc. Heatsink
SRM6828S00D01GE000B00CE	A388 Dual ClearFog Base No SSD 1GB DDR No eMMC Com. Temp R00 Inc. Enclosure
SRM6828S00D01GE008B00CE	A388 Dual ClearFog Base No SSD 1GB DDR 8GB eMMC Com. Temp R00 Inc. Enclosure
SRM6828S00D01GE000B00IE	A388 Dual ClearFog Base No SSD 1GB DDR No eMMC Ind. Temp R00 Inc. Enclosure
SRM6828S00D01GE008B00IE	A388 Dual ClearFog Base No SSD 1GB DDR 8GB eMMC Ind. Temp R00 Inc. Enclosure

(*) Kits consist of:

1. Carrier Board
2. System on Module
3. Heatsink or Enclosure

Different configurations are available per MOQ.

Safety Notice

- a. This device is to be used with Certified Power adaptor with output rated 12VDC, 1.5A. Power adapter must meet Limited power source (LPS) requirements.
- b. Power adapter must meet local safety standards and requirements based on product intended use.
- c. Power adapter must meet Operating environment conditions as specified above.

Disposal

Follow local regulations regarding disposal of the product. Dispose of your product in accordance with local regulations. In some areas, the disposal of these items in household or business trash may be prohibited.

Help us protect the environment- recycle!

IMPORTANT NOTICE – Please Read Carefully

No warranty of accuracy is given concerning the contents of the information contained in this document. To the extent permitted by law no liability (including liability to any person by reason of negligence) will be accepted by SolidRun Ltd. Or its employees for any direct or indirect loss or damage caused by omissions from or inaccuracies in this document.

SolidRun Ltd. Reserves the right to change details in this publication without notice

Product and company names herein may be the trademarks of their respective owners.

Information in this document supersedes and replaces information previously supplied in any prior versions of this document.

Support

For technical support please visit:

Our Wiki – <http://wiki.solid-run.com/>

Our Forums - <http://forum.solid-run.com/>

For direct support please contact us at: support@solid-run.com

Documentation

Additional documentation available at:

<http://wiki.solid-run.com/doku.php?id=products:a38x:documents>