

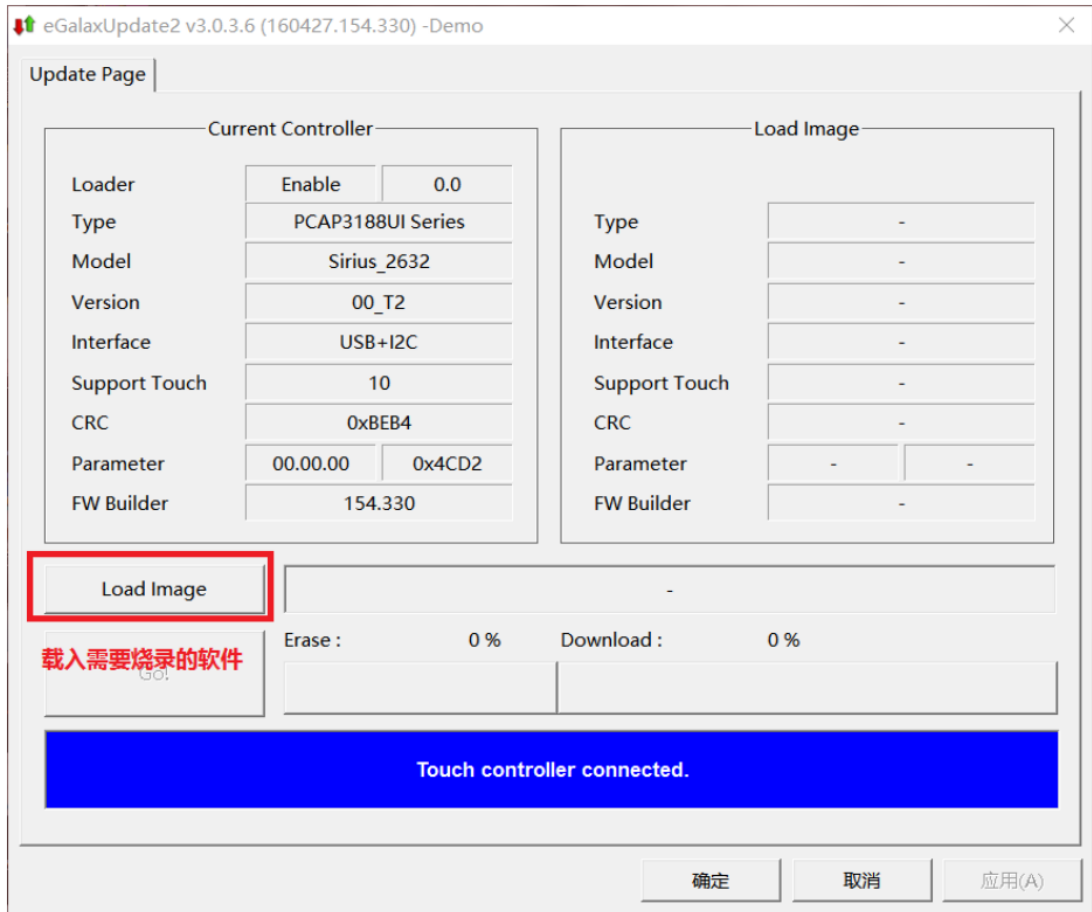
1. Unzip the file, you will find the following files:

名称	修改日期	类型	大小
eGalax.dat	2018/9/3 16:08	DAT 文件	2 KB
eGalax5960Suite.exe	2017/2/22 15:22	应用程序	1,801 KB
eGalaxBuilder31xx.exe	2017/2/22 15:51	应用程序	2,214 KB
eGalaxCalibration.exe	2017/1/11 11:01	应用程序	3,104 KB
eGalaxCalibration.ini	2016/10/4 15:52	配置设置	1 KB
eGalaxFPCTester.exe	2017/2/22 15:16	应用程序	1,793 KB
eGalaxFPCTester.ini	2015/9/22 14:49	配置设置	1 KB
eGalaxSensorTester3.exe	2017/2/22 15:12	应用程序	2,111 KB
eGalaxTestAnalyzer.exe	2019/9/19 18:51	应用程序	2,170 KB
eGalaxTune.csv	2020/10/28 11:03	Microsoft Excel ...	1 KB
eGalaxTuner31XX.exe	2017/2/22 15:53	应用程序	2,574 KB
eGalaxUpdate.ini	2015/11/3 18:02	配置设置	3 KB
eGalaxUpdate2.exe	2017/2/22 15:11	应用程序	3,536 KB
EULA.pdf	2014/10/28 9:55	Adobe Acrobat ...	192 KB
FPCTestRet.txt	2018/4/26 0:01	文本文档	1 KB
HIDdAPI.dll	2017/2/22 15:08	应用程序扩展	1,834 KB
LastTestLog.txt	2020/8/5 15:32	文本文档	1 KB
OPDraw.exe	2017/2/22 15:26	应用程序	2,319 KB
OPDraw_3000.ini	2016/8/10 17:46	配置设置	9 KB
PCAP3103_3111_v000_0000_C000_C	2020/8/5 15:26	3103 文件	119 KB

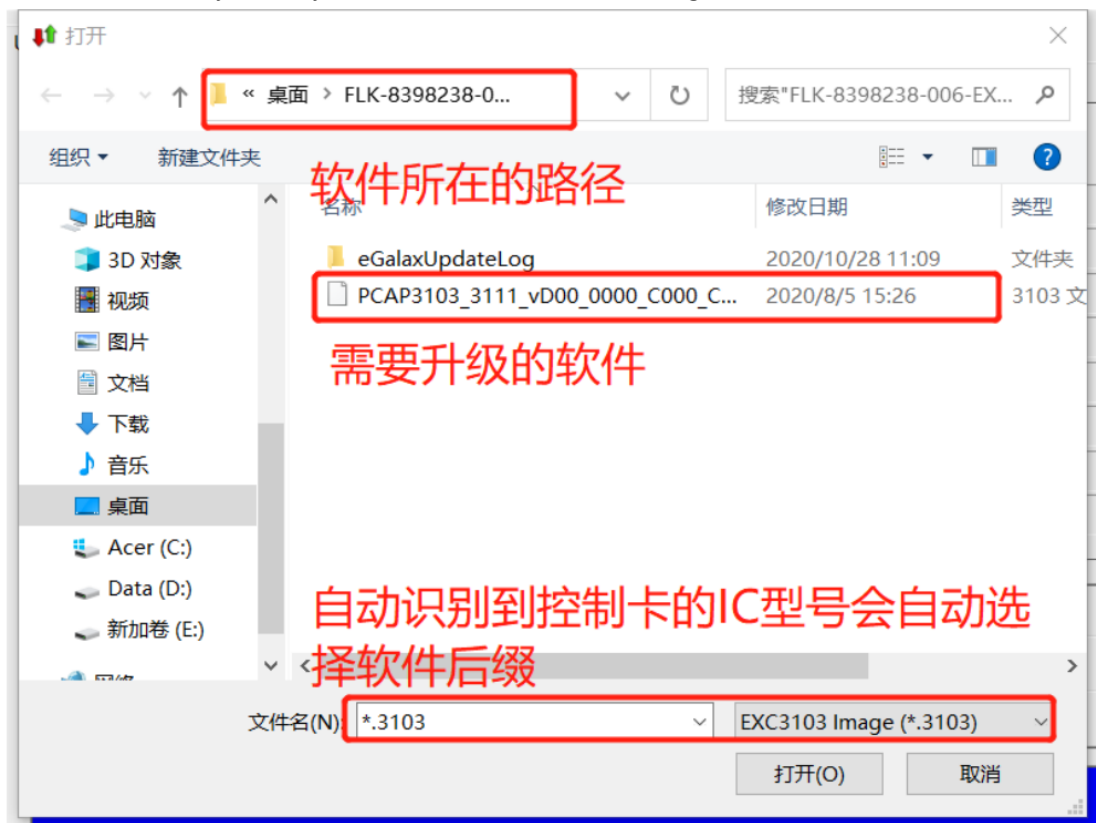
2. Double Click on “eGalaxUpdate2.exe”, and click “Yes”



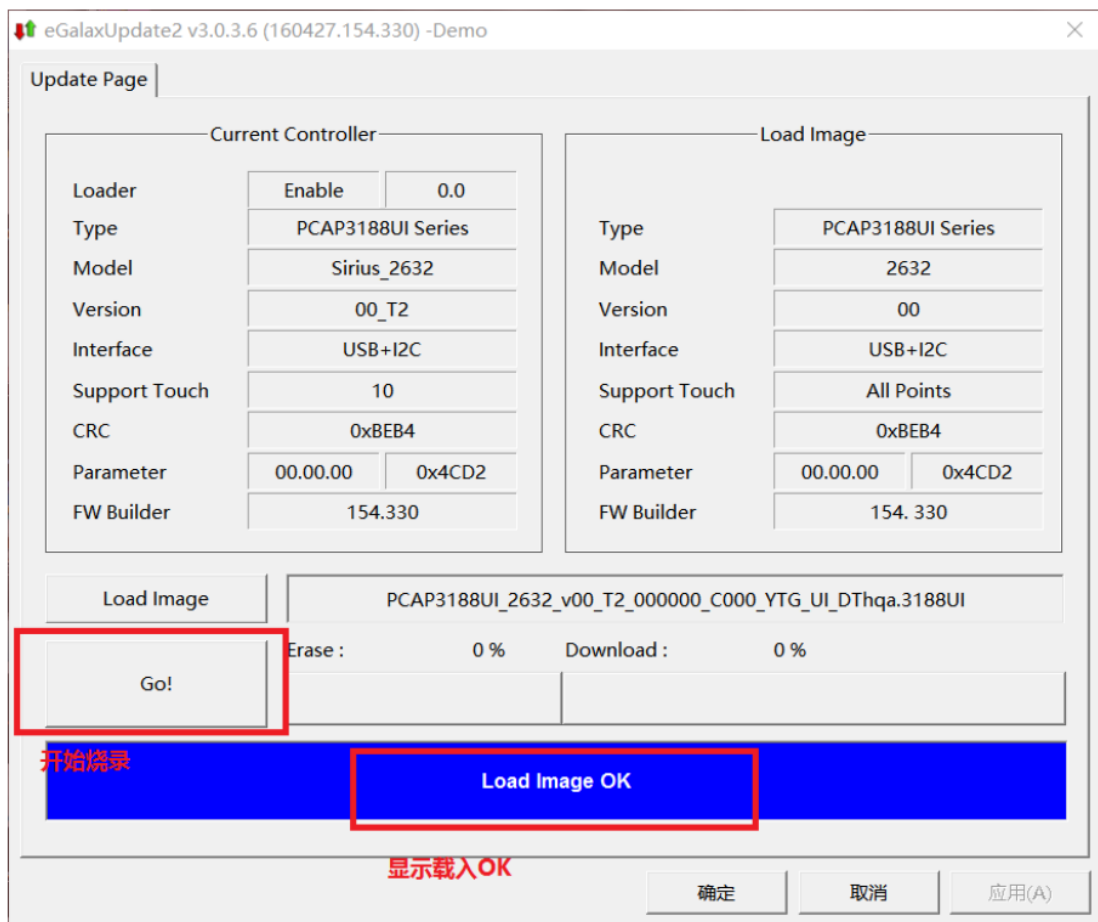
3. Open and find “Load Image”



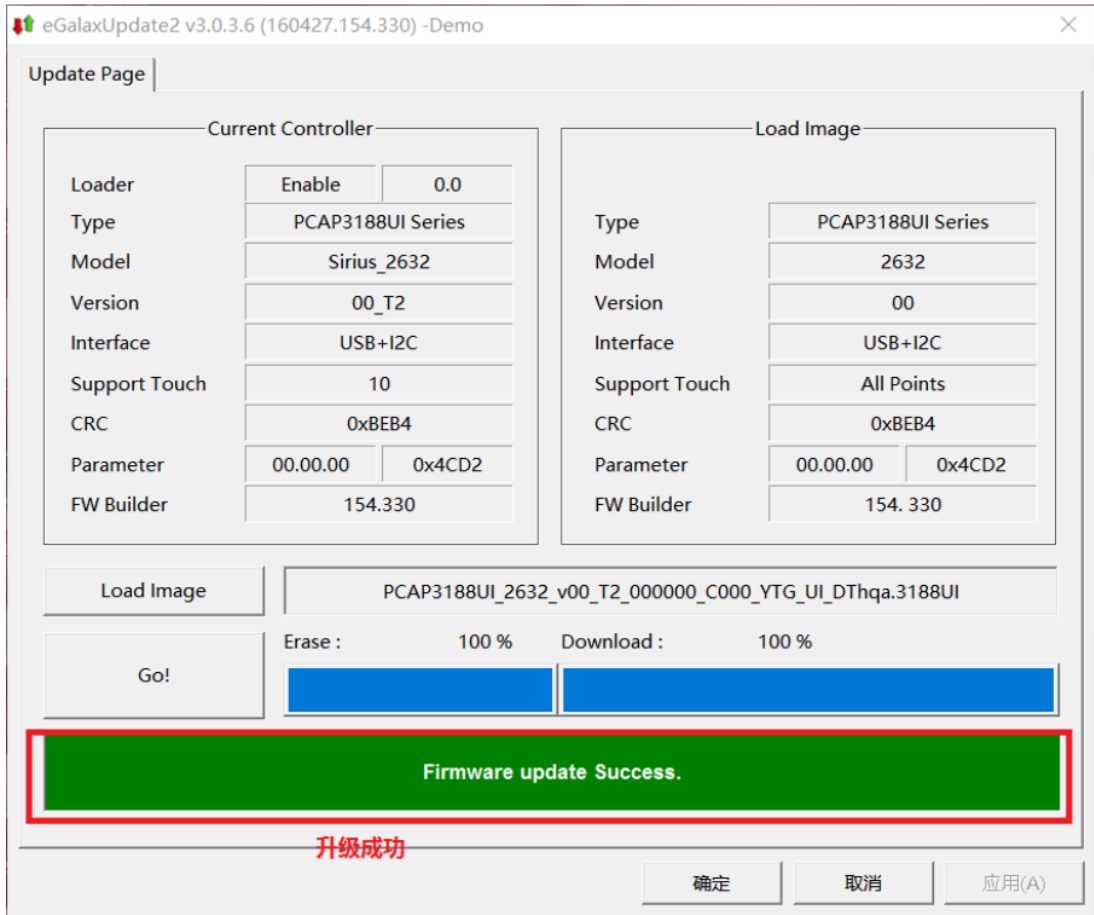
4. It will automatically identify the IC and relevant file naming.



- Click "Go!" till the FW updated. During updating process, please do not touch the panel, Controller and touch panel need to be connected through the process.



- Firmware update success.

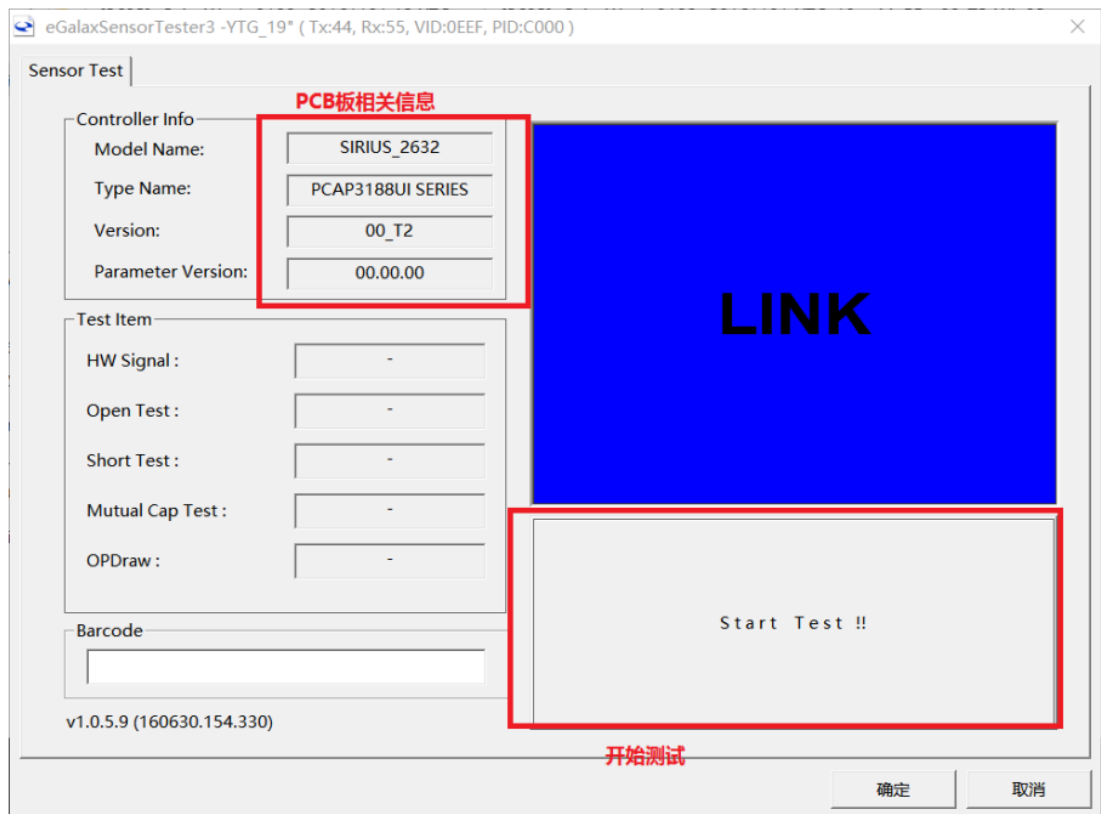


Test Mode:

Double Click on test program:

名称	修改日期	类型	大小
eGalax.dat	2018/9/3 16:08	DAT 文件	2 KB
eGalax5960Suite.exe	2017/2/22 15:22	应用程序	1,801 KB
eGalaxBuilder31xx.exe	2017/2/22 15:51	应用程序	2,214 KB
eGalaxCalibration.exe	2017/1/11 11:01	应用程序	3,104 KB
eGalaxCalibration.ini	2016/10/4 15:52	配置设置	1 KB
eGalaxFPCTester.exe	2017/2/22 15:16	应用程序	1,793 KB
eGalaxFPCTester.ini	2015/9/22 14:49	配置设置	1 KB
eGalaxSensorTester3.exe	2017/2/22 15:12	应用程序	2,111 KB
eGalaxTestAnalyzer.exe	2019/9/19 18:51	应用程序	2,170 KB
eGalaxTune.csv	2020/10/28 11:03	Microsoft Excel ...	1 KB
eGalaxTuner31XX.exe	2017/2/22 15:53	应用程序	2,574 KB
eGalaxUpdate.ini	2015/11/3 18:02	配置设置	3 KB
eGalaxUpdate2.exe	2017/2/22 15:11	应用程序	3,536 KB
EULA.pdf	2014/10/28 9:55	Adobe Acrobat ...	192 KB
FPCTestRet.txt	2018/4/26 0:01	文本文档	1 KB
HIDdAPI.dll	2017/2/22 15:08	应用程序扩展	1,834 KB
LastTestLog.txt	2020/8/5 15:32	文本文档	1 KB
OPDraw.exe	2017/2/22 15:26	应用程序	2,366 KB
OPDraw_3000.ini	2016/8/10 17:46	配置设置	9 KB
PCAP3103_3111_vD00_0000_C000_C	2020/8/5 15:26	3103 文件	119 KB

After the controller info appears, start test:



Click on Start Test!!, it will show Pass or NG. Once test NG, please contact us.

