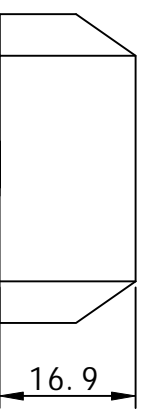
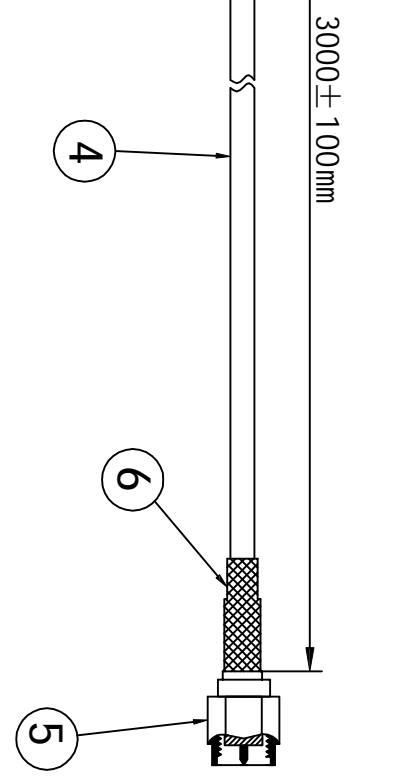
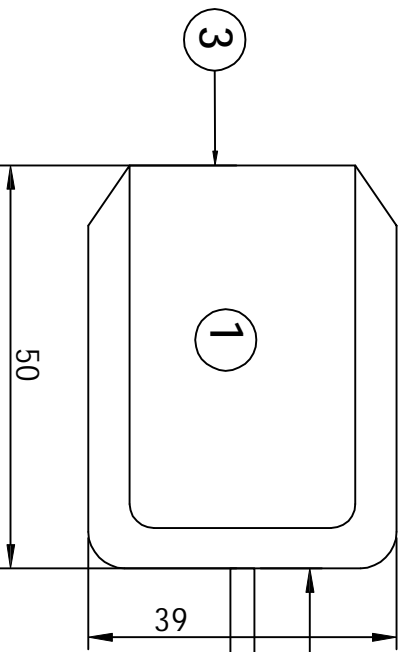
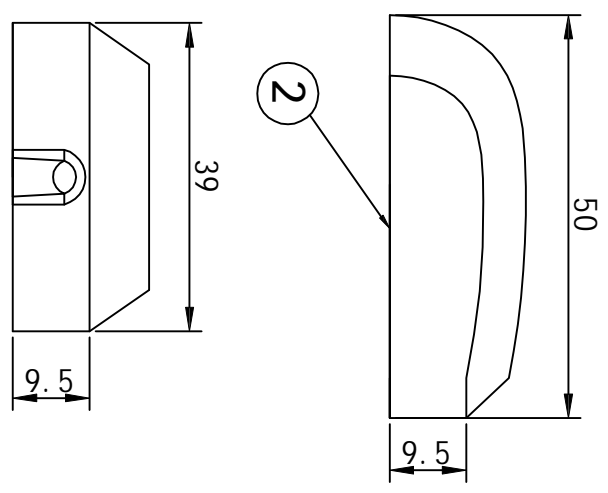


No.	Name	Description	QTY
①	Antenna element	25*25*4 Ceramics	1
②	Installation method	3MAYAP	1
③	COVER	50*39*16.9mm ABS+PC BLACK	1
④	CABLE	RG174 Copper COAXIAL CABLE 50ohm BLACK	1
⑤	CONNECTOR	SMA-J	1
⑥	H.S TUBE	HEAT SHRINK TUBE	1

MAIN TECHNICAL SPECIFICATIONS	
Model Type	GNSS-SMAJ-3M-5039
Frequency Range	1560-1610MHz
Band Width	10MHz
Axial ratio	≤4DB
Vswr	≤1.8
Gain	28±3DB
Impedance	50 OHM
Polarization	RHCP
Noise Figure	≤1.8 DB
DC Voltage	3-5V
DC Current	≤25mA
Connector	SMA-J
CABLE	RG174=3000mm
Dielectric Size	50*39*16.9
Working Temp	- 4 0 ° -- 85 °
Way To Install	3M



ALL DIMENSIONS ARE IN MILLIMETERS AND [INCHES] Unit:mm

THIRD ANGLE PROJECTION

TOLERANCE UNLESS OTHERWISE SPECIFIED

.X ±0.25

.XX ±0.20

UNIT mm SCALE free

REV. A

PART NAME
GNSS SMA MALE ANTENNA

DRAWN BY R.YU

CHECKED BY JOSON

APPROVED BY

DATE 2022-8-29

PART NO. GNSS-SMAJ-3M-5039

CUSTOMER P/N

ROHO ROHO COMMUNICATION TECHNOLOGY CO.,LTD

