



倍仕得电气科技(杭州)股份有限公司
BEISIT ELECTRIC TECH (HANGZHOU) CO.,LTD.



BBT Fluid Connector

Beisit factory Aeroview



做人, 把人品做好,
做企业, 把产品做好。

董事长:

郑永

[illegible]

Brand Definition



"I" stands for "Integrity"

"I" stands for "International"

"BEST": Best

Functions as an international company of high integrity whose mission is to provide customer with finest products and services

倍仕得

pronounced as "bei", means "more", gathering more talents;mastery of work comes from more diligence; developing with high efficiency.

pronounced as "shi", means"talents", a person with ability and integrity; Both enterprise and individual should have a bright future, indicating the idea of people-oriented.

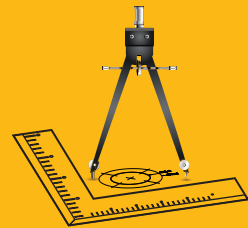
pronounced as "de",means "possess", to create and possess higher value.

Gather a large number of talents, and create a glorious future

Quick Fluid Connector Purification Workshop

BEISIT®

Design and Manufacture of Precision Cutting Tools.



Design and Manufacture of Precise Cutting Tools

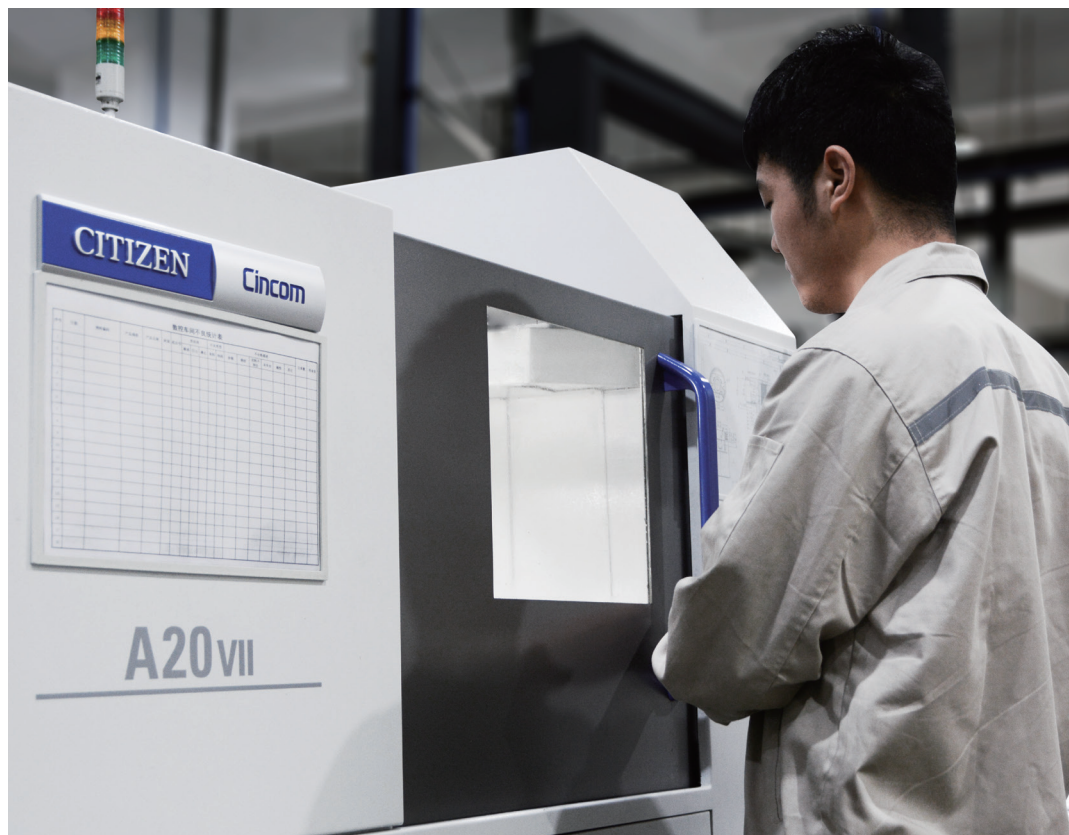


Design and Manufacture of Precision Cutting Tools

The machining accuracy can be accurate to 0.01mm

3days to provide metal samples

7days to deliver samples



Company Certifications



Informatization System



Efficient and fast Informatization system.



Testing Center



The raw materials:metal material testing

The sealing:anti-aging test,hardness testing

The spring:fatigue test,spring force detection



High and Low Temperature Alternating Humid Heat Test Chamber



Flow resistance tester



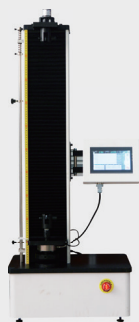
Automatic digital display spring fatigue testing machine



Machined parts: roughness detection, dimensional measurement

Surface treatment: film thickness detection, salt spray test

Product: withstand voltage test, sealing test, flow coefficient test, connection and separation force test, durability test, minimum burst pressure test, high temperature test, low temperature test, interchangeability test



Automatic digital display spring tension pressure testing machine



Neutral Salt Spray Tester

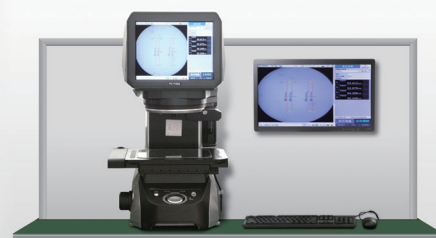
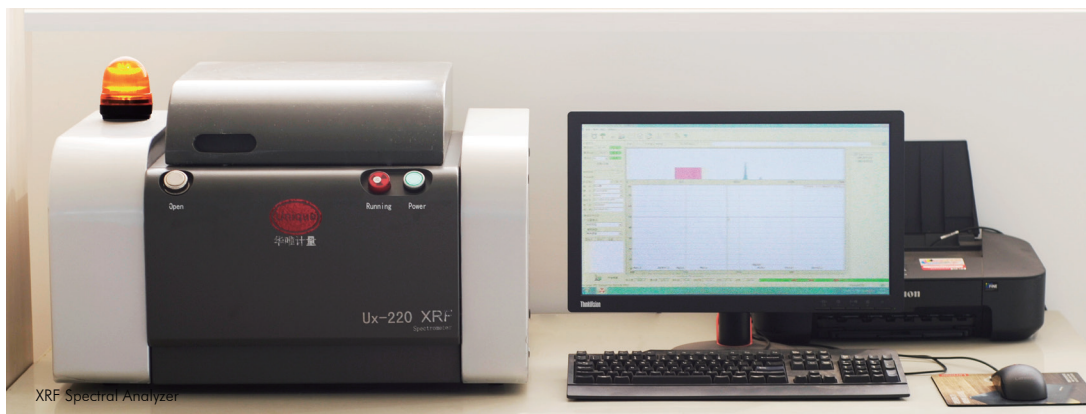


Image dimension measuring instrument



Air tightness tester



XRF Spectral Analyzer

Corporate Culture



Mission: To supply most reliable connectors for global industry.

Customer Value: Revere clients; Never waver in determination to create unique value for our clients.

Quality Value: Quality as life, only once. Never waver in determination to produce 100% qualified products.

A background image of the Earth from space, showing the Americas. Overlaid on the globe are numerous glowing blue dashed lines that represent a global network or communication system, connecting various points across the continents.

Linking with the World
Connecting to the Future

BBT BBT Fluid Connector**Safe & Environmental**

- Bi-directional flat sealed design that ensures no leakage during connection and disconnection.
- Flat seal design, which is easy to clean and avoids contamination of the medium.
- Plug and Socket are equipped with protective caps to prevent the sealing surface from being polluted during transportation.
- Please contact us if you have requirement for pressure relief after disconnection.

Stable & Reliable

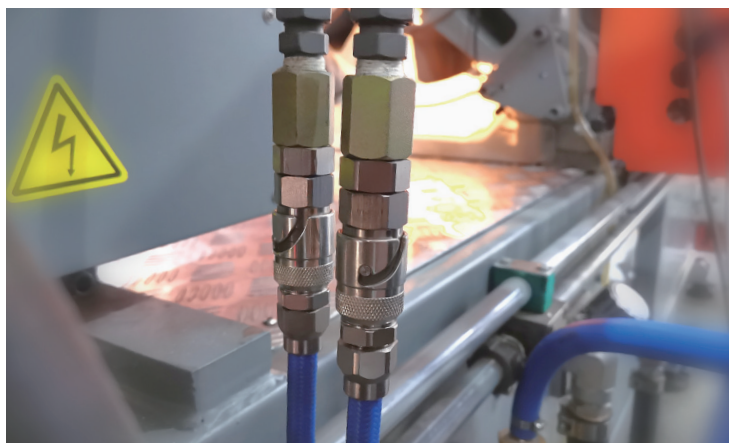
- More stable connection for extreme vibration environments.
- The selected material combined with unique surface treatment not only makes the product sturdy and reliable, but also achieving high corrosion resistance and wear resistance.
- Various sealing material O-rings are available to meet the temperature requirements of different media and guarantee long-term stable & and reliable sealing performance.
- The radial design of the O-ring at the connection of the Plug and Socket ensures that the sealing function has been completed before the valve is opened during connection.

Convenient

- Push-in to lock the connection and seal, which is easy and convenient to operate by one hand.
- Multiple color options for quick identification of different circuits.
- G male thread with O-ring makes installation more convenient and sealing easier.

Customized

- Providing customized end-fitting for easy installation.
- Providing customized hose integration with aesthetic appearance and reducing risk of leakage.
- For other customization requirements, please contact us freely.

BBT BBT Fluid Connector**Application Fields**

- Military defense, Aerospace and other fields
- Data center, Supercomputer
- Rail transit, New energy vehicles
- Industry

Applicable Fluid Types

- Coolant
- Glycol Water
- Heat transfer oils
- Esters
- Kerosene
-

Part Numbers

BBT 03S G18F - SS - NB - 90 - RD

Colour			
RD	Red	GN	Green
YW	Yellow	BK	Black
BU	Blue		

Angle	
00	Straight Through
90	Degree Elbow
45	Degree Elbow

Seals	
EP	Ethylene Propylene Rubber EPDM
NB	Nitrile Rubber NBR
FM	Fluorocarbon Rubber FPM/FKM/Viton
FV	Fluorosilicone Rubber FVMQ
FF	Highly Fluorine Rubber FFKM
CR	Neoprene CR

Material	
AL	Aluminum
SS	Stainless Steel 316L
BR	Brass With Nickel Plated
SA	Stainless Steel 304

Male and Female Threads	
F	Female Thread
M	Male Thread

G/R/N/J Thread Size		M Thread Size		H08	Connects with 08 inner diameter rubber hose
18	1/8	32	1-1/2"	S10	Connects with 10 outer diameter stainless steel tube
14	1/4	01	1"	B810	Connects with 8x10 brass tube
38	3/8	02	2"	T812	Connects with 8x12 plastic tube
12	1/2	04	4"	F3636	Flange hole 36x36
34	3/4				

End Fitting Type		
G	G Thread	H Hose
R	R Thread	S Stainless Steel Tube
N	NPT Thread	B Brass Tube
J	UNF thread JIC37 ° taper ISO8434	T Plastic Tube
M	M Thread	F Flange

Coupling Type	
S	Socket
P	Plug

Equivalent Diameter			
03	3mm	09	9mm
05	5mm	10	10mm
06	6mm	12	12mm
08	8mm	16	16mm
		20	20mm
		25	25mm
		50	50mm
		00	100mm

Category Name	
B	Automatic Connecting With Flat Face Seal
S	Without Locking Mechanism
T	Others
BBT	Bayonet Locking Mechanism
BTG	Tri-Curve Groove Locking Mechanism
BSL	Auto Steel Ball Locking Mechanism
SCB	Blind-Mate, Without Lock Mechanism
SDB	Coaxial Correction Function Blind-mate, Without Locking Mechanism
TPP	Semi-auto Steel Ball Locking Mechanism
TSF	Screw Locking Mechanism
TPB	Push-Button Locking Mechanism With Needle Valve

Selection of sealing materials

Material	Code	Working temperature	
NBR	NB	-15 ~ + 100 °C	<ol style="list-style-type: none"> 1. General applications. 2. High mechanical strength.
FPM、FKM、Viton	FM	-10 ~ + 200 °C	<ol style="list-style-type: none"> 1. Good chemical resistance. 2. Outstanding resistance to high temperatures up to 200 °C . 3. Resistance to mineral oils, synthetic hydraulic oils, fuels, chemicals,hydrocarbons and coolants.
EPDM	EP	-20 ~ + 150 °C	<ol style="list-style-type: none"> 1. Excellent resistance to high temperatures. 2. Compatible with phosphate-based brakefluids - esters, hot and cold water, steam. 3. Pay attention to the use of mineral oil in the components of the medium circuit
FFKM	FF	0 ~ + 250 °C	<ol style="list-style-type: none"> 1. Combines the qualities of an elastomer with the chemical resistance of PTFE. 2. Remarkable resistance to heat and most chemical agents including inorganic and organic acids. 3. Coolants.
FVMQ	FV	-45 ~ + 175 °C	<ol style="list-style-type: none"> 1. Max. working pressure: 50 bar. 2. Good resistance to low and high temperatures. 3. Resistance to mineral oils, fuels.
PTFE	PT	-50 ~ + 200 °C	<ol style="list-style-type: none"> 1. Max. working pressure: 80 bar. 2. Excellent chemical resistance. 3. Very good resistance to low and high temperatures. 4. Superior performance to elastomers.
CR	CR	-40 ~ + 100 °C	Good resistance to ageing and refrigerant.

In order to choose the solution that best meets your application needs, it is recommended to provide us with the following accurate information:

1. Fluid type 2. Work pressure 3. Working temperature 4. Salt and acid concentration of aqueous solution 5. Special usage conditions

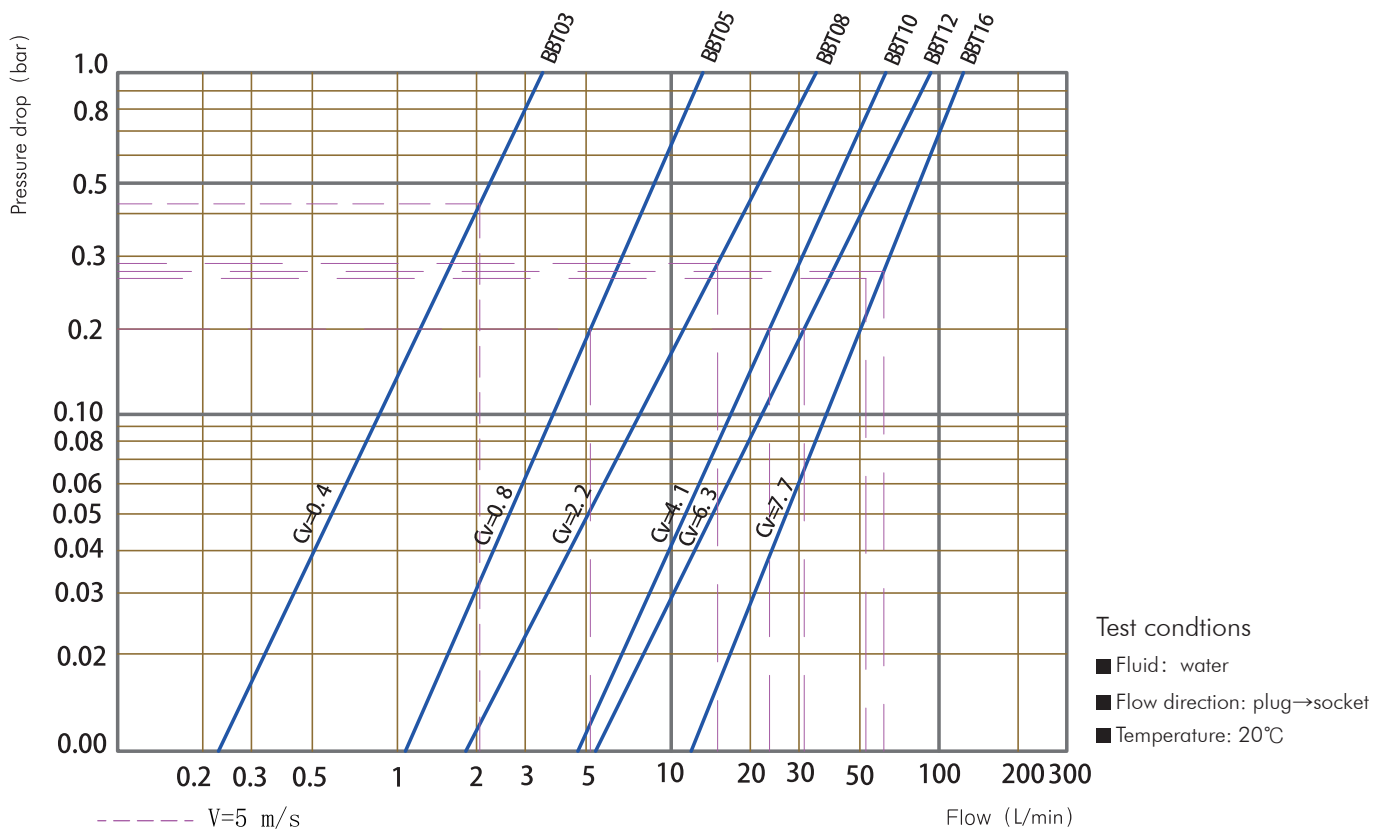
If you need any inquiries, please feel free to contact our technical experts.
Our experienced quick connector experts provide you with the most thoughtful service.

Technical Parameter



Regular Type						
Product Model	BBT03	BBT05	BBT08	BBT10	BBT12	BBT16
Nominal Working Pressure (bar)	20	20	20	20	20	20
Cv (Gal/min)	0.4	0.8	2.2	4.1	6.3	7.7
Nominal Working Flow Rate (L/Min)	2.1	5.88	15	23.55	33.9	60.3
Leakage Per Disconnection (ml)	0.002	0.02	0.03	0.05	0.05	0.09

BBT Pressure drop/Flow rate Chart

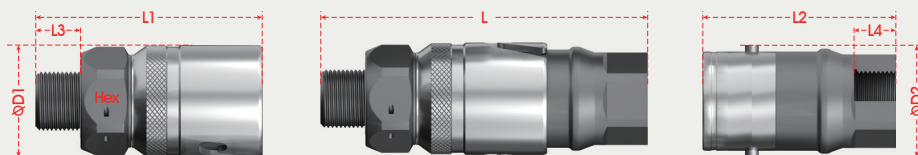


→ BBT03

Plug and socket connection diagram

$$L = L1 + L2 - X$$

$$X = 16.5\text{mm}$$



	Picture	End Fitting Type	L1	L2	L3	L4	D1	D2	Hex	Product model
Plug		JIC37° Taper UNF3/8-24	46.5	/	13	/	16	/	13.5	BBT 03P J38
		JIC37° Taper UNF3/8-24 90° Elbow	44	/	13	/	16	/	13.5	BBT 03P J38-90
Socket		JIC37° Taper UNF3/8-24	/	44.5	/	13	/	16	15.5	BBT 03S J38
		Flange Hole 16.6x16.6	/	34.5	/	/	/	16	25	BBT 03S F1616

If you need to inquire about other end fitting, please feel free to contact our technical experts.
Our experienced quick connector experts provide you with the most thoughtful service.

→ BBT05

Plug and socket connection diagram

$$L = L1 + L2 - X$$

$$X = 18.6\text{mm}$$



	Picture	End Fitting Type	L1	L2	L3	L4	D1	D2	Hex	Product model
Plug		G1/4 Male Thread	47	/	11	/	21	/	19	BBT 05P G14M
		Hose Size 9.5mm	66.5	/	21.5	/	21	/	19	BBT 05P H10
Socket		JIC37° Taper UNF9/16-18	/	48.5	/	14	/	22	20	BBT 05S J916
		Flange Hole 18x18	/	43	/	/	/	20	28	BBT 05S F1818

If you need to inquire about other end fitting, please feel free to contact our technical experts.
Our experienced quick connector experts provide you with the most thoughtful service.

→ BBT08

Plug and socket connection diagram

$$L = L1 + L2 - X$$

$$X = 22.5\text{mm}$$



	Picture	End Fitting Type	L1	L2	L3	L4	D1	D2	Hex	Product model
Plug		G3/8 Male Thread	55.5	/	12	/	29.5	/	26	BBT 08P G38M
		G3/8 Female Thread	59.5	/	13	/	29.5	/	26	BBT 08P G38F
Socket		G3/8 Female Thread	/	50	/	13	/	27	24	BBT 08S G38F
		Flange Hole 22x22	/	41	/	/	/	25	30	BBT 08S F2222

If you need to inquire about other end fitting, please feel free to contact our technical experts.
Our experienced quick connector experts provide you with the most thoughtful service.

→ BBT10

Plug and socket connection diagram

$$L = L1 + L2 - X$$

$$X = 30.5\text{mm}$$



	Picture	End Fitting Type	L1	L2	L3	L4	D1	D2	Hex	Product model
Plug		G1/2 Male Thread	65	/	14	/	34.5	/	30	BBT 10P G12M
		G1/2 Female Thread	70	/	15	/	34.5	/	30	BBT 10P G12F
Socket		G1/2 Male Thread	/	47.5	/	14	/	34.5	30	BBT 10S G12M
		G1/2 Female Thread	/	52.5	/	15	/	34.5	30	BBT 10S G12F

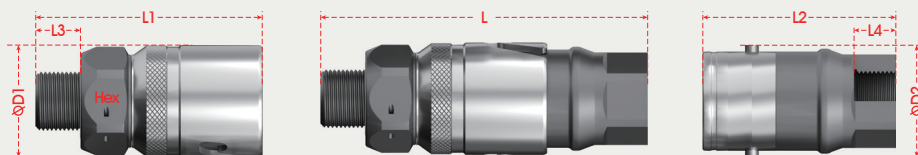
If you need to inquire about other end fitting, please feel free to contact our technical experts.
Our experienced quick connector experts provide you with the most thoughtful service.

→ BBT12

Plug and socket connection diagram

$$L = L1 + L2 - X$$

$$X = 32.1 \text{ mm}$$



	Picture	End Fitting Type	L1	L2	L3	L4	D1	D2	Hex	Product model
Plug		G1/2 Male Thread	80	/	14	/	40	/	35	BBT 12P G12M
		Hose size 19mm	92	/	32	/	40	/	35	BBT 12P H19
Socket		G1/2 Male Thread	/	69	/	14	/	40	36	BBT 12S G12M
		Flange Hole 34x34	/	55	/	/	/	40	45	BBT 12S F3434

If you need to inquire about other end fitting, please feel free to contact our technical experts.
Our experienced quick connector experts provide you with the most thoughtful service.

→ BBT16

Plug and socket connection diagram

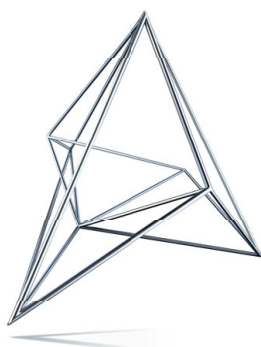
$$L = L1 + L2 - X$$

$$X = 41.4\text{mm}$$



	Picture	End Fitting Type	L1	L2	L3	L4	D1	D2	Hex	Product model
Plug		G3/4 Male Thread	106	/	16	/	48.5	/	40	BBT 16P G34M
		M27 Female Thread	105	/	20	/	48.5	/	40	BBT 16P M27F
Socket		G3/4 Male Thread	/	89	/	16	/	48	40	BBT 16S G34M
		M27 Male Thread	/	89	/	16	/	48	40	BBT 16S M27M

If you need to inquire about other end fitting, please feel free to contact our technical experts.
Our experienced quick connector experts provide you with the most thoughtful service.



Symmetron

МОСКВА
Ленинградское ш., д. 69, к. 1
Тел.: +7 495 961-20-20
moscow@symmetron.ru

САНКТ-ПЕТЕРБУРГ
ул. Таллинская, д. 7
Тел.: +7 812 449-40-00
spb@symmetron.ru

НОВОСИБИРСК
ул. Блюхера, д. 716
Тел.: +7 383 361-34-24
sibir@symmetron.ru

www.symmetron.ru