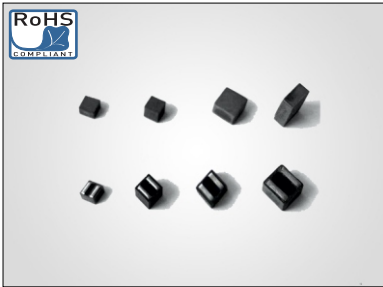


High Current Shielded Power Inductors MXAL4020/4030/4040 Series

Meisongbei



Features

- High current; very low DCR
- Soft saturation makes them
- AEC-200 Grade 1 (-40°C to +125°C)

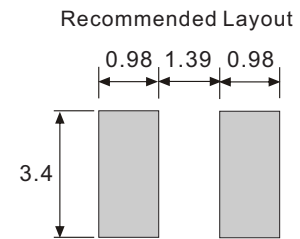
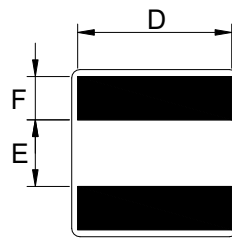
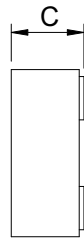
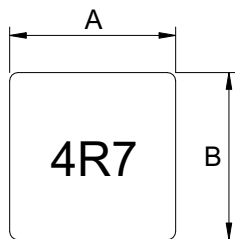
General Specifications

- Storage temp range: -55°C to +125°C
- Operating temp range: -40°C to +125°C
- Resistance to Soldering Heat +260°C for 10 Sec.

General Specifications

- Inductance tested at 100kHz, 1.0Vrms
- Irms: Current that cause 40°C rise from 25°C
- Isat: Inductance 30% drop max at DC current.

► Dimensions & Configurations (Unit:mm)



| Type | A(±0.3) | B(±0.3) | C (Max.) | D (Typ.) | E (±0.25) | F (±0.05) |
|----------|---------|---------|----------|----------|-----------|-----------|
| MXAL4020 | 4.0 | 4.0 | 2.1 | 3.25 | 1.57 | 0.82 |
| MXAL4030 | 4.0 | 4.0 | 3.1 | 3.25 | 1.57 | 0.82 |
| MXAL4040 | 4.0 | 4.0 | 4.1 | 3.25 | 1.57 | 0.82 |

► Electrical Characteristics For MXAL4020/4030/4040 Series

| Part Number | Inductance [uH] | DCR(max) [mΩ] | Isat [A] (Max.) | Irms [A] (Max.) |
|---------------|-----------------|---------------|-----------------|-----------------|
| MXAL4020-R22M | 0.22 | 6.4 | 18.7 | 16.8 |
| MXAL4020-R40M | 0.40 | 8.3 | 12.5 | 14.0 |
| MXAL4020-R60M | 0.60 | 10.5 | 10.4 | 11.7 |
| MXAL4020-1R0M | 1.0 | 14.6 | 8.7 | 9.6 |
| MXAL4020-1R2M | 1.2 | 19.5 | 7.9 | 9.0 |
| MXAL4020-1R5M | 1.5 | 23.6 | 7.1 | 7.5 |
| MXAL4020-2R2M | 2.2 | 38.7 | 5.6 | 5.5 |
| MXAL4030-3R3M | 3.3 | 28.6 | 5.5 | 6.6 |
| MXAL4030-4R7M | 4.7 | 44.1 | 4.5 | 5.1 |
| MXAL4030-6R8M | 6.8 | 74.1 | 3.6 | 3.9 |
| MXAL4040-8R2M | 8.2 | 66.9 | 4.0 | 3.4 |
| MXAL4040-100M | 10 | 92.4 | 3.0 | 3.1 |
| MXAL4040-150M | 15 | 120.0 | 2.8 | 2.8 |